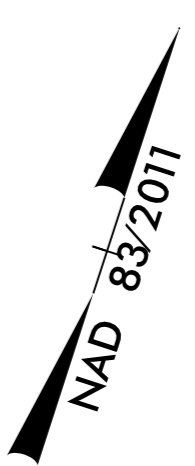




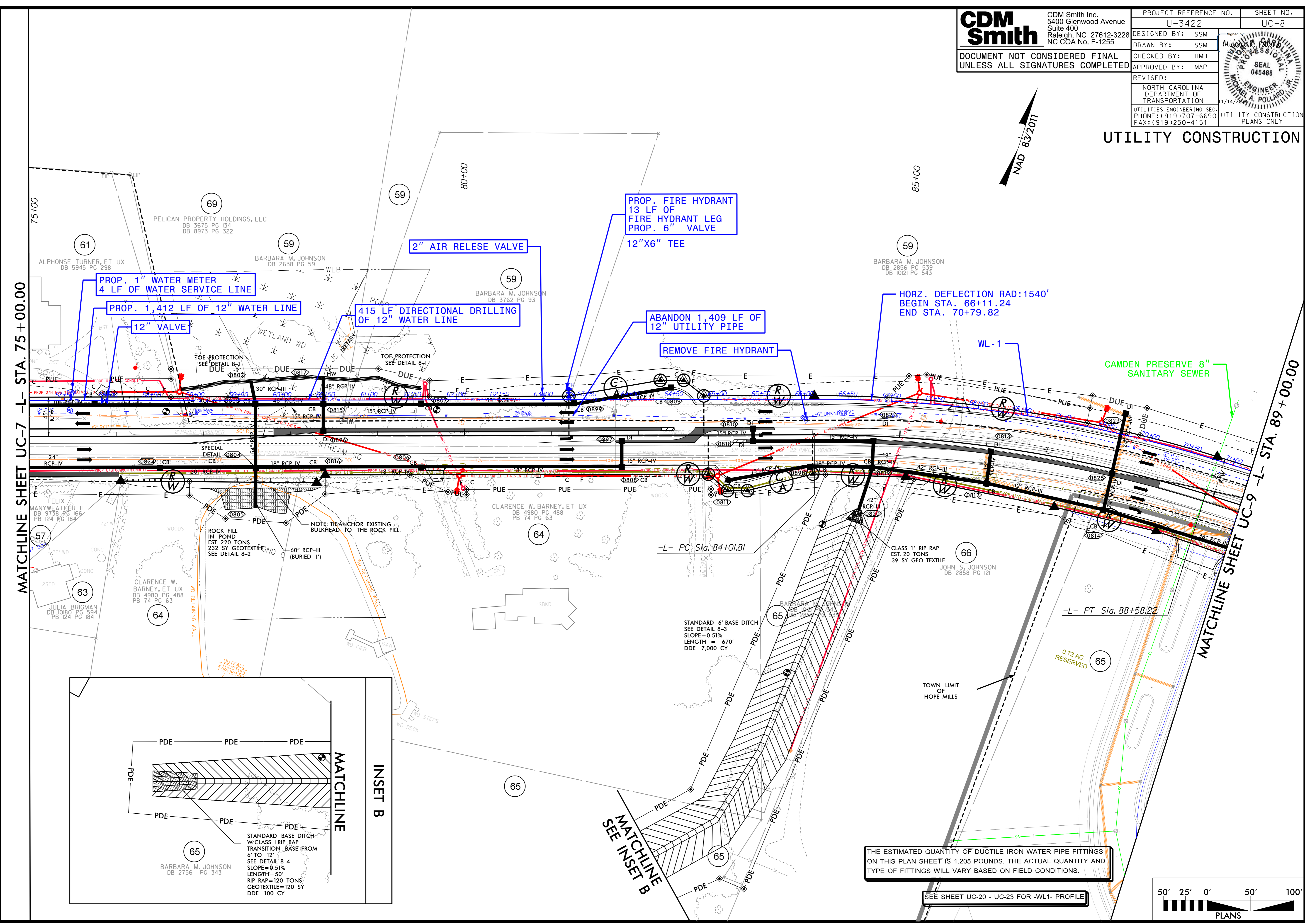
CDM Smith Inc.  
5400 Glenwood Avenue  
Suite 400  
Raleigh, NC 27612-3228  
NC COA No. F-1255

PROJECT REFERENCE NO.	U-3422	SHEET NO.	UC-8
DESIGNED BY:	SSM		
DRAWN BY:	SSM		
CHECKED BY:	HMH		
APPROVED BY:	MAP		
REVISED:			
NORTH CAROLINA DEPARTMENT OF TRANSPORTATION		UTILITY CONSTRUCTION PLANS ONLY	
UTILITIES ENGINEERING SEC.		PHONE: (919) 707-6690	
		FAX: (919) 250-4151	

DOCUMENT NOT CONSIDERED FINAL  
UNLESS ALL SIGNATURES COMPLETED

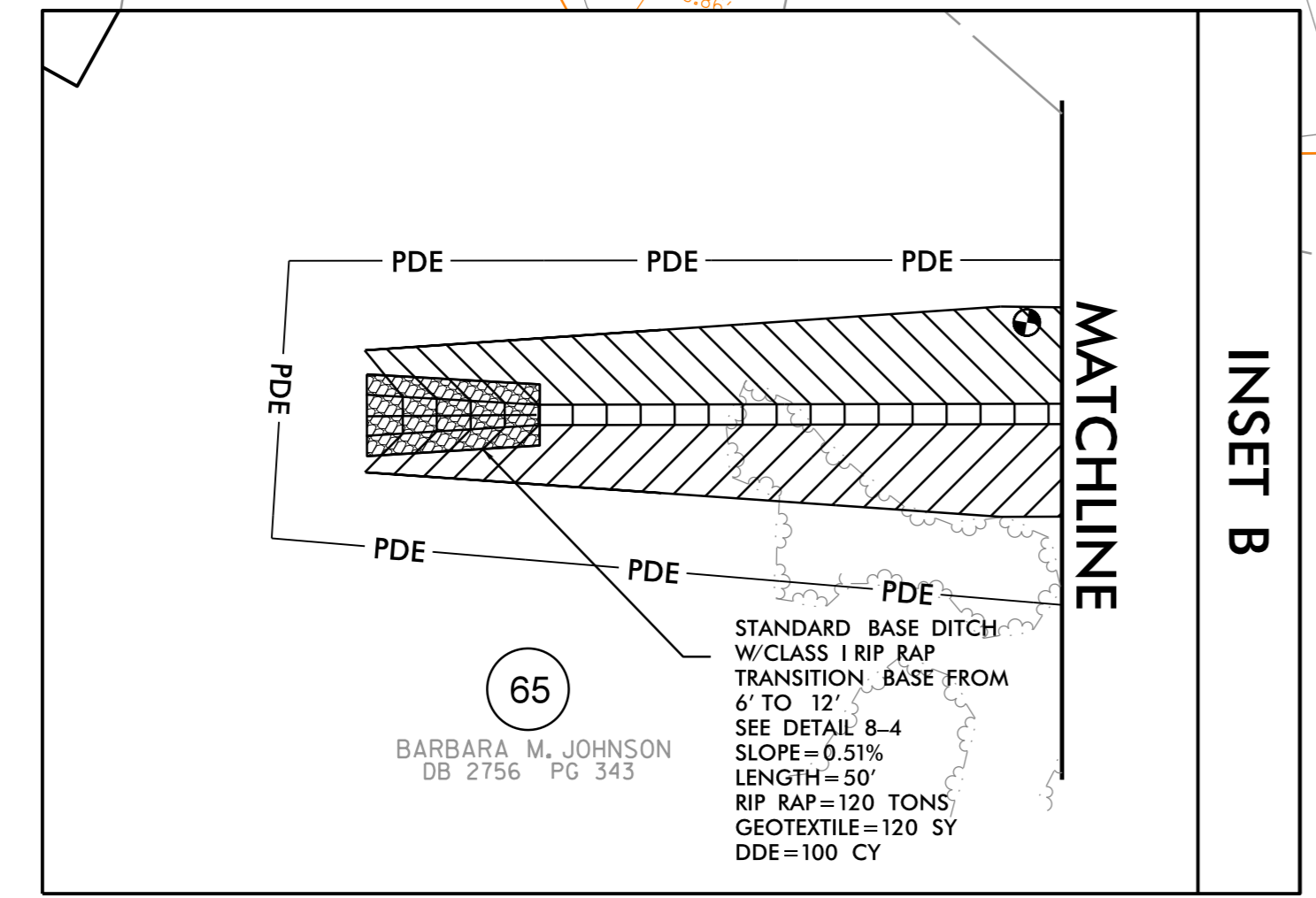


# UTILITY CONSTRUCTION



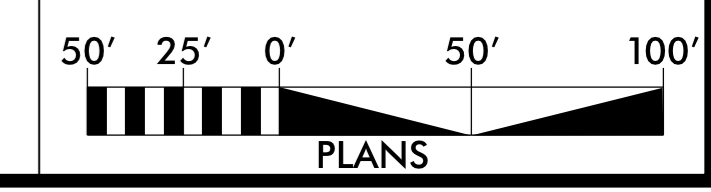
MATCHLINE SHEET UC-7 -L- STA. 75+00.00

MATCHLINE SHEET UC-9 -L- STA. 89+00.00



THE ESTIMATED QUANTITY OF DUCTILE IRON WATER PIPE FITTINGS ON THIS PLAN SHEET IS 1,205 POUNDS. THE ACTUAL QUANTITY AND TYPE OF FITTINGS WILL VARY BASED ON FIELD CONDITIONS.

SEE SHEET UC-20 - UC-23 FOR -WL1- PROFILE



SYSTEM: T:\a-dub8\_UC08\_psh.dgn  
USER: WJZ





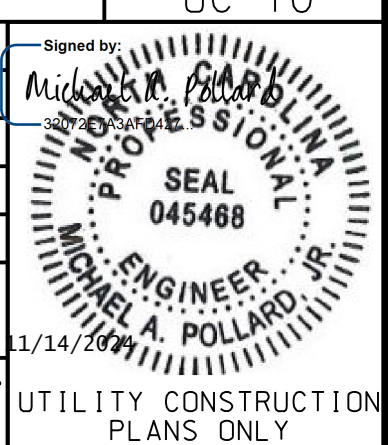




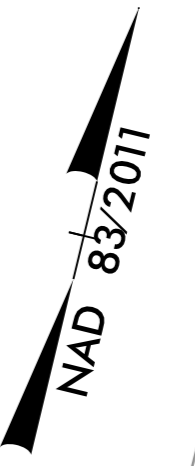
CDM Smith Inc.  
5400 Glenwood Avenue  
Suite 400  
Raleigh, NC 27612-3228  
NC COA No. F-1255

PROJECT REFERENCE NO.	U-3422	SHEET NO.	UC-10
DESIGNED BY:	SSM	DRAWN BY:	SSM
CHECKED BY:	HMH	APPROVED BY:	MAP
REVISED:			
NORTH CAROLINA DEPARTMENT OF TRANSPORTATION		UTILITIES ENGINEERING SEC. PHONE: (919) 707-6690 FAX: (919) 250-4151	
		UTILITY CONSTRUCTION PLANS ONLY	

DOCUMENT NOT CONSIDERED FINAL  
UNLESS ALL SIGNATURES COMPLETED



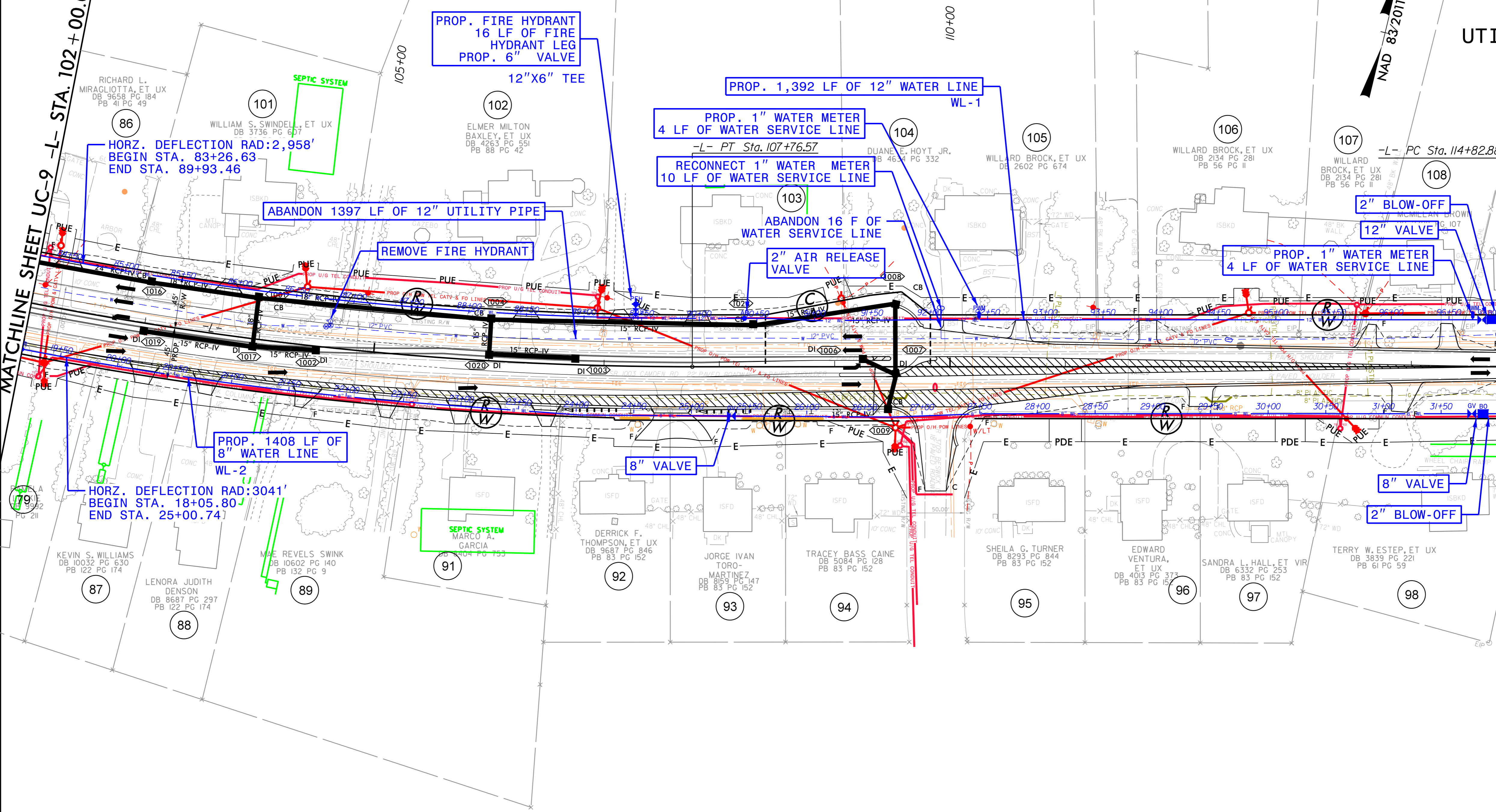
### UTILITY CONSTRUCTION



5/14/2011

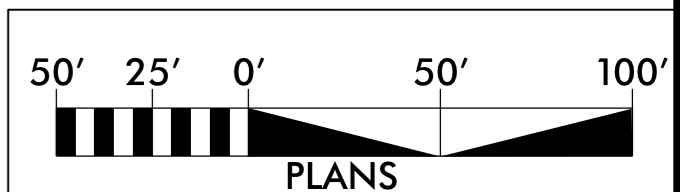
MATCHLINE SHEET UC-9 -L- STA. 102+00.00

MATCHLINE SHEET UC-11 (PHASE B) -L- STA. 114+75



SEE SHEET UC-20 - UC-23 FOR -WL1- PROFILE  
SEE SHEET UC-26 FOR -WL2- PROFILE

THE ESTIMATED QUANTITY OF DUCTILE IRON WATER PIPE FITTINGS ON THIS PLAN SHEET IS 2,505 POUNDS. THE ACTUAL QUANTITY AND TYPE OF FITTINGS WILL VARY BASED ON FIELD CONDITIONS.



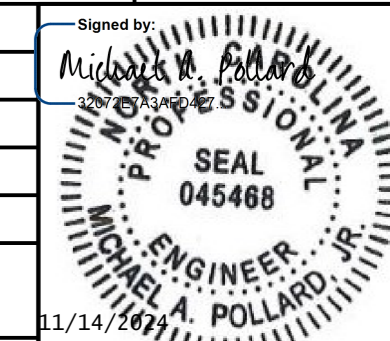
SYSTEM: uc\_10.dwg UC10 - psh.dgn  
USER: map



5/28/99

SCALE: 1"=50' (HORZ.)  
1"=10' (VERT.)

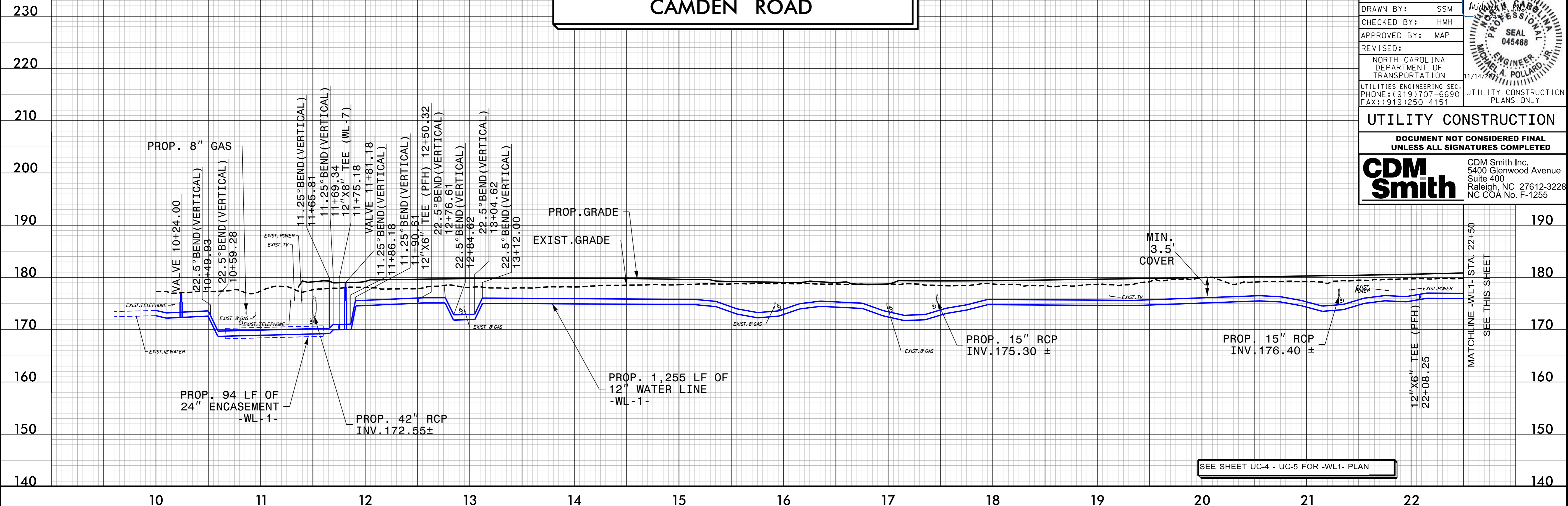
### PROPOSED 12" WATERLINE -WL1- CAMDEN ROAD

PROJECT REFERENCE NO.	U-3422	SHEET NO.	UC-20
DESIGNED BY:	SSM		
DRAWN BY:	SSM		
CHECKED BY:	HMH		
APPROVED BY:	MAP		
REVISED:			
NORTH CAROLINA DEPARTMENT OF TRANSPORTATION		UTILITY CONSTRUCTION PLANS ONLY	
UTILITIES ENGINEERING SEC. PHONE: (919) 707-6690 FAX: (919) 250-4151			

**UTILITY CONSTRUCTION**

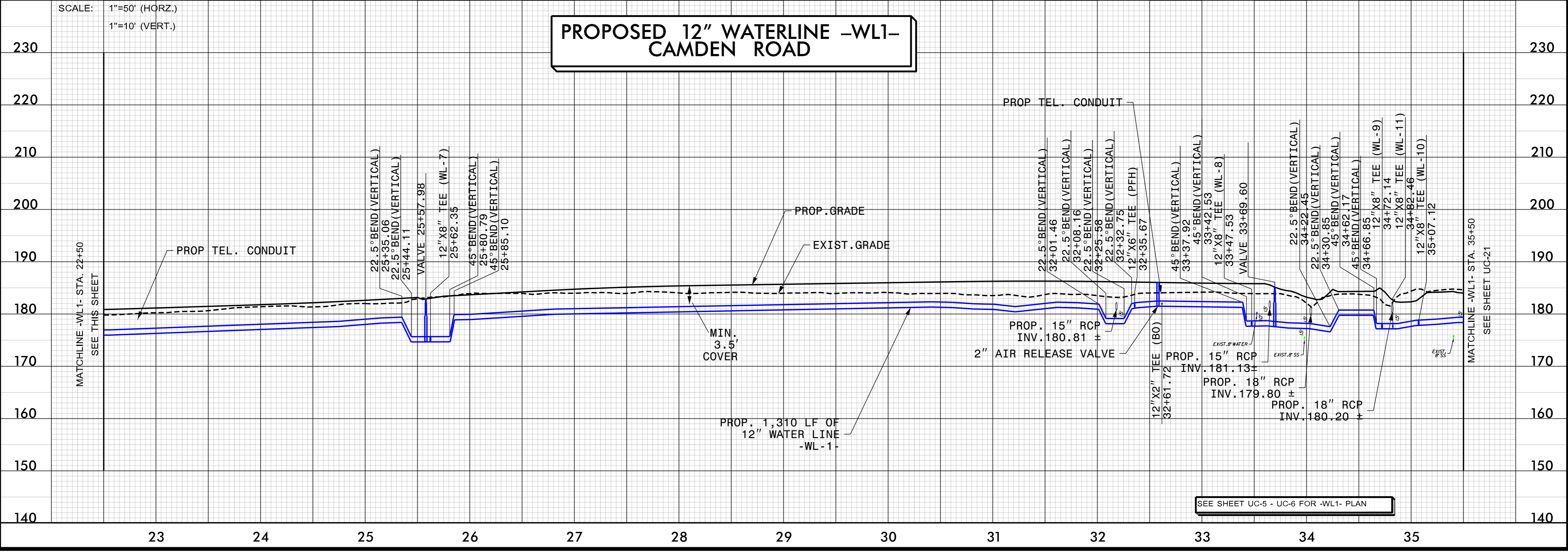
**DOCUMENT NOT CONSIDERED FINAL UNLESS ALL SIGNATURES COMPLETED**

**CDM Smith**  
CDM Smith Inc.  
5400 Glenwood Avenue  
Suite 400  
Raleigh, NC 27612-3228  
NC COA No. F-1255



SCALE: 1"=50' (HORZ.)  
1"=10' (VERT.)

### PROPOSED 12" WATERLINE -WL1- CAMDEN ROAD



-SYTIME-AUG22-Ut\_ucput20.dgn  
USER:MAP

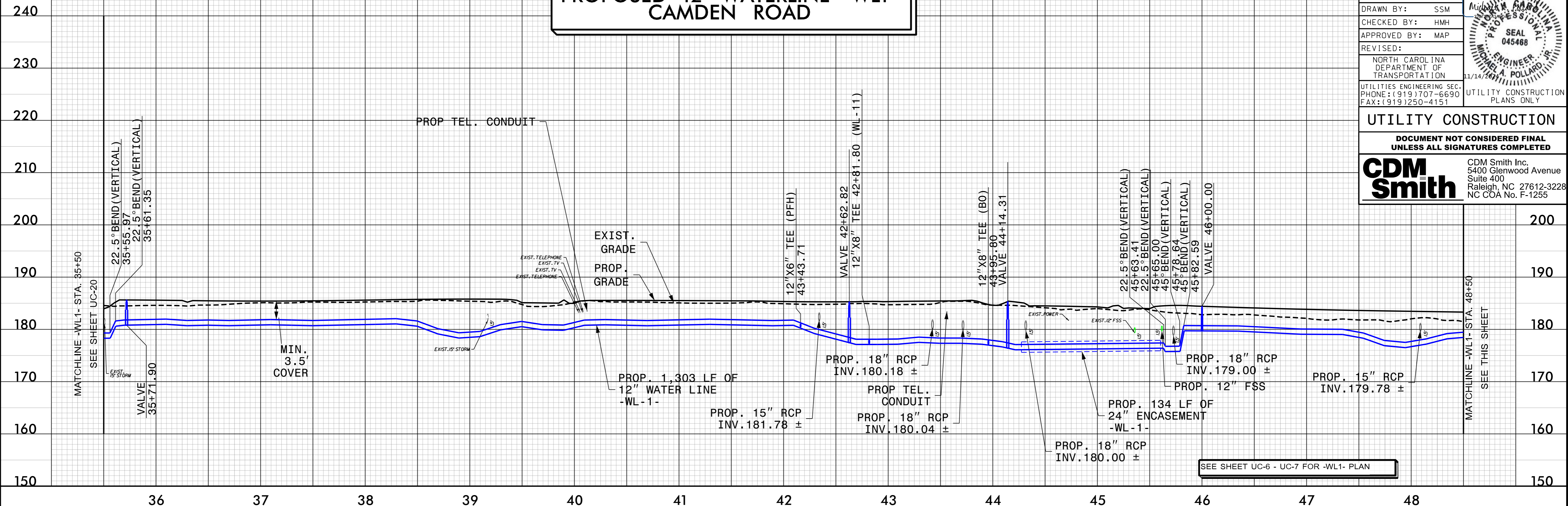


5/28/99

SCALE: 1"=50' (HORZ.)  
1"=10' (VERT.)

### PROPOSED 12" WATERLINE -WL1- CAMDEN ROAD

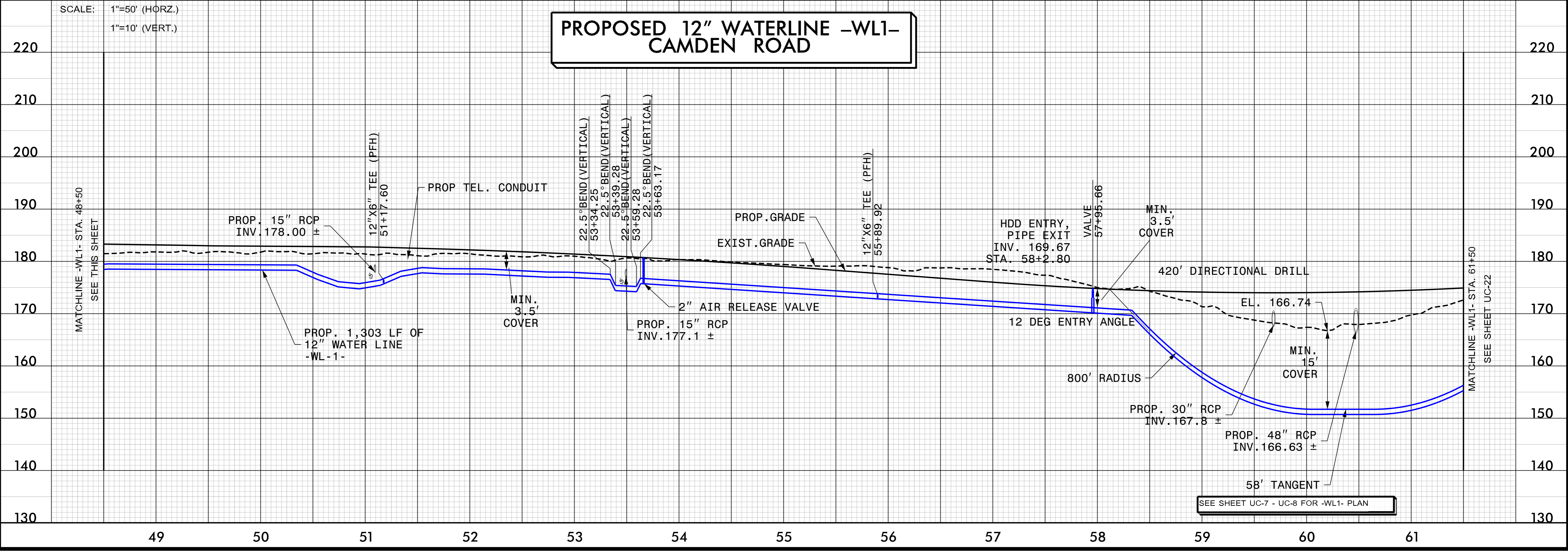
PROJECT REFERENCE NO.	U-3422	SHEET NO.	UC-21
DESIGNED BY:	SSM		
DRAWN BY:	SSM		
CHECKED BY:	HMH		
APPROVED BY:	MAP		
REVISED:			
NORTH CAROLINA DEPARTMENT OF TRANSPORTATION		UTILITY CONSTRUCTION PLANS ONLY	
UTILITIES ENGINEERING SEC. PHONE: (919) 707-6690 FAX: (919) 250-4151			
<b>UTILITY CONSTRUCTION</b>			
DOCUMENT NOT CONSIDERED FINAL UNLESS ALL SIGNATURES COMPLETED			
		CDM Smith Inc. 5400 Glenwood Avenue Suite 400 Raleigh, NC 27612-3228 NC COA No. F-1255	



SEE SHEET UC-6 - UC-7 FOR -WL1- PLAN

SCALE: 1"=50' (HORZ.)  
1"=10' (VERT.)

### PROPOSED 12" WATERLINE -WL1- CAMDEN ROAD



SEE SHEET UC-7 - UC-8 FOR -WL1- PLAN

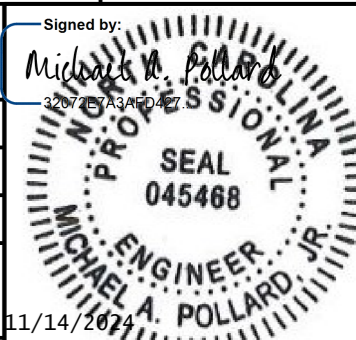

SYTIME: A:\10422-Ut\_ucout21.dgn  
USER: MAP  
PLOT:

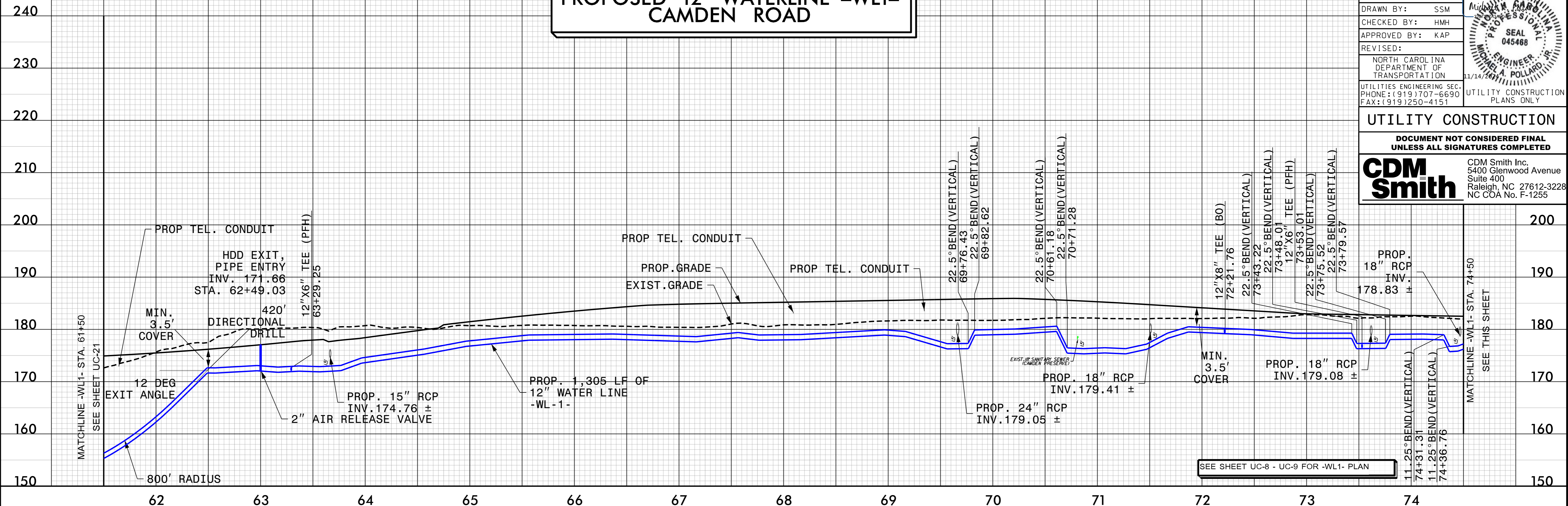


5/28/99

SCALE: 1"=50' (HORZ.)  
1"=10' (VERT.)

### PROPOSED 12" WATERLINE -WL1- CAMDEN ROAD

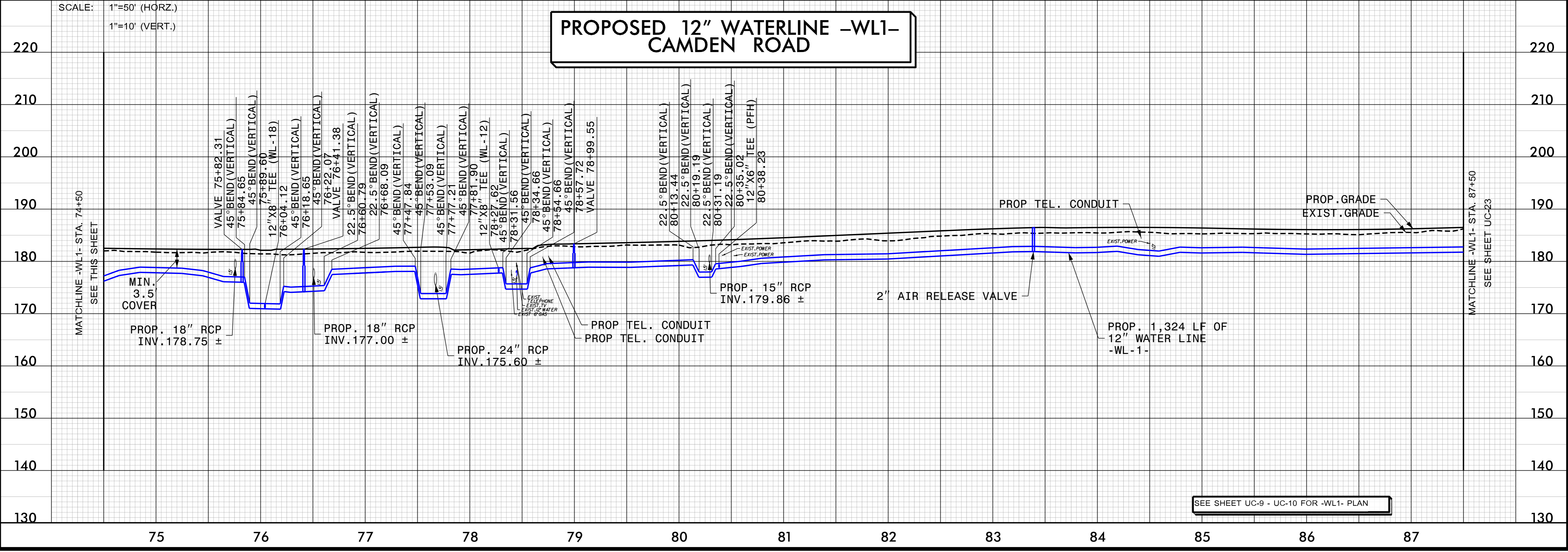
PROJECT REFERENCE NO.	U-3422	SHEET NO.	UC-22
DESIGNED BY:	SSM		
DRAWN BY:	SSM		
CHECKED BY:	HMH		
APPROVED BY:	KAP		
REVISER:			
NORTH CAROLINA DEPARTMENT OF TRANSPORTATION		11/14/2011	
UTILITIES ENGINEERING SEC. PHONE: (919) 707-6690 FAX: (919) 250-4151		UTILITY CONSTRUCTION PLANS ONLY	
<b>UTILITY CONSTRUCTION</b>			
DOCUMENT NOT CONSIDERED FINAL UNLESS ALL SIGNATURES COMPLETED			
		CDM Smith Inc. 5400 Glenwood Avenue Suite 400 Raleigh, NC 27612-3228 NC COA No. F-1255	



SEE SHEET UC-8 - UC-9 FOR -WL1- PLAN

SCALE: 1"=50' (HORZ.)  
1"=10' (VERT.)

### PROPOSED 12" WATERLINE -WL1- CAMDEN ROAD



SEE SHEET UC-9 - UC-10 FOR -WL1- PLAN

-SYTIME: A:\0422-Ut\_ucput22.dgn  
11:58:30 PM 5/28/99

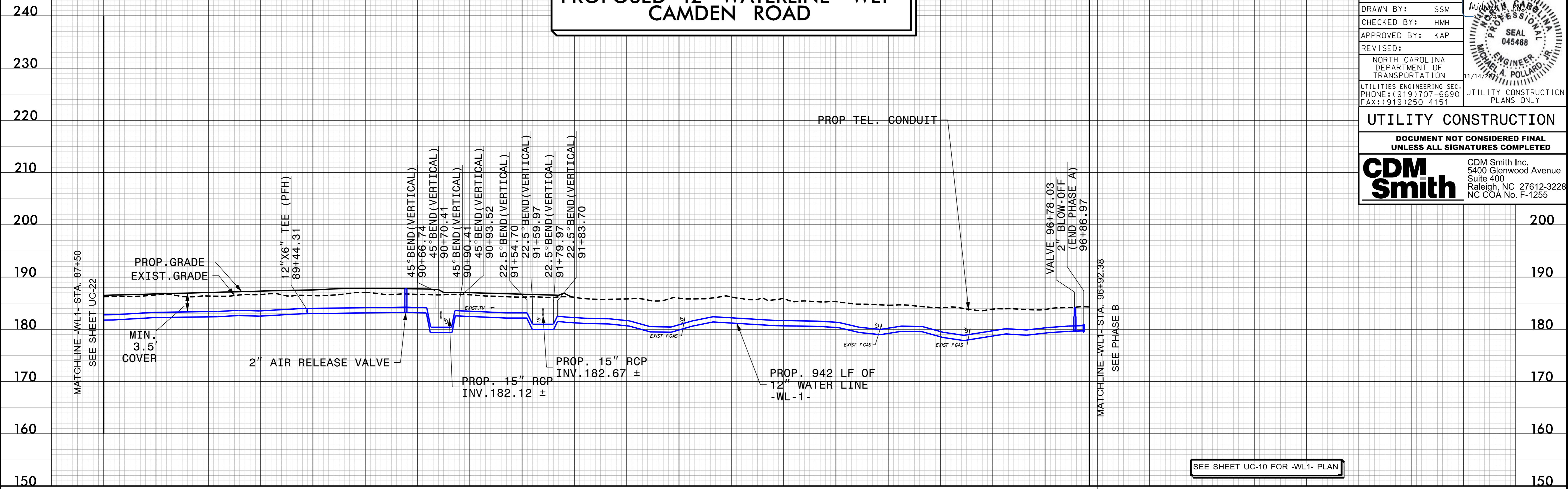


5/28/99

SCALE: 1"=50' (HORZ.)  
1"=10' (VERT.)

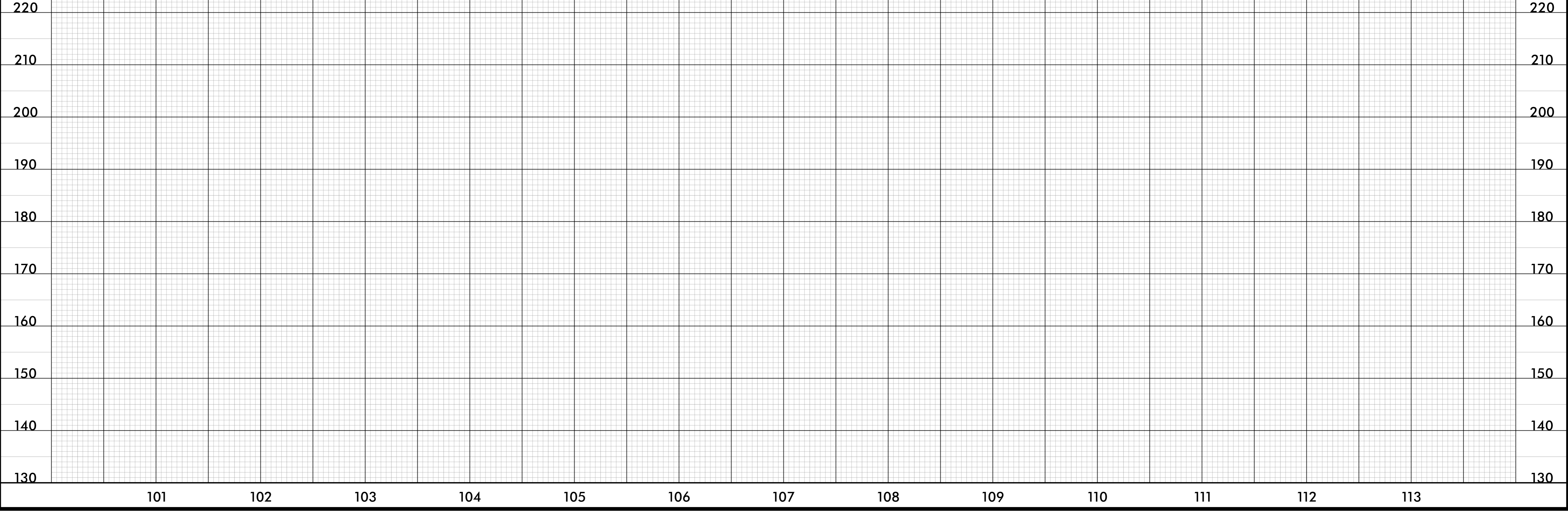
# PROPOSED 12" WATERLINE -WL1- CAMDEN ROAD

PROJECT REFERENCE NO.	SHEET NO.
U-3422	UC-23
DESIGNED BY: SSM	
DRAWN BY: SSM	
CHECKED BY: HMH	
APPROVED BY: KAP	
REVISED:	
NORTH CAROLINA DEPARTMENT OF TRANSPORTATION	
UTILITIES ENGINEERING SEC. PHONE: (919) 707-6690 FAX: (919) 250-4151	
UTILITY CONSTRUCTION PLANS ONLY	
<b>UTILITY CONSTRUCTION</b>	
DOCUMENT NOT CONSIDERED FINAL UNLESS ALL SIGNATURES COMPLETED	
<b>CDM Smith</b>	CDM Smith Inc. 5400 Glenwood Avenue Suite 400 Raleigh, NC 27612-3228 NC COA No. F-1255



SEE SHEET UC-10 FOR -WL1- PLAN

SCALE: 1"=50' (HORZ.)  
1"=10' (VERT.)



-SYSTEM- A:\10422-Ut\_ucput23.dgn  
11:58:37 PM 5/28/99

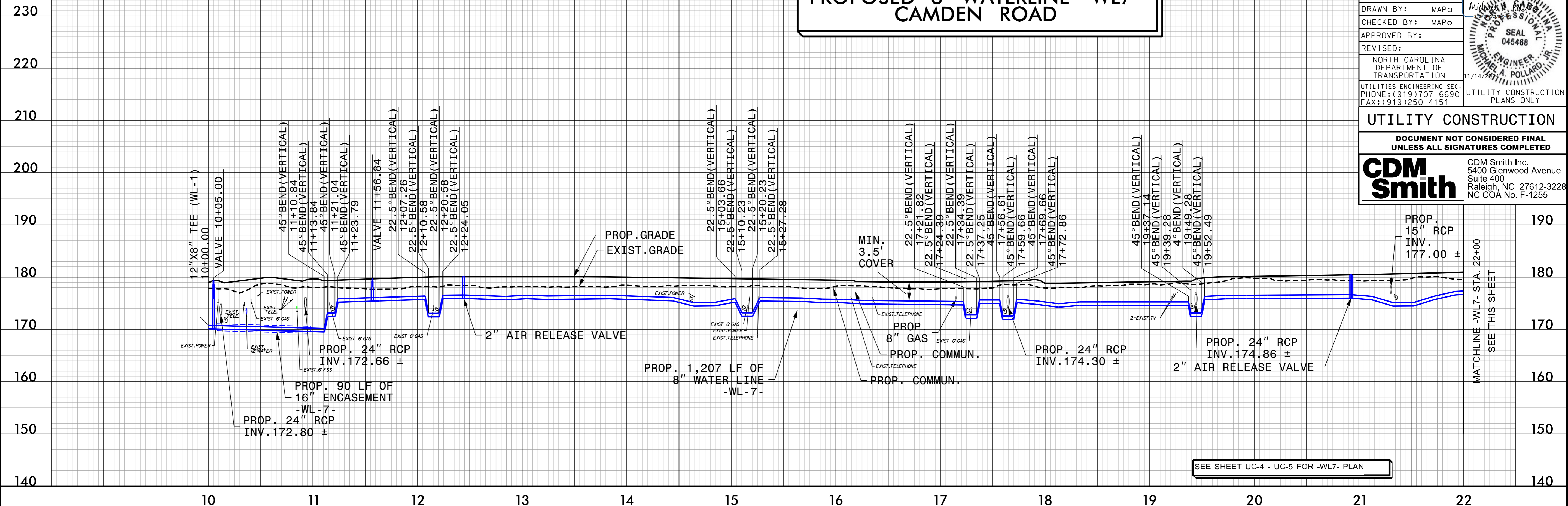


5/28/99

SCALE: 1"=50' (HORZ.)  
1"=10' (VERT.)

### PROPOSED 8" WATERLINE -WL7- CAMDEN ROAD

PROJECT REFERENCE NO.	U-3422	SHEET NO.	UC-24
DESIGNED BY:	MAPG		
DRAWN BY:	MAPG		
CHECKED BY:	MAPG		
APPROVED BY:			
REVISED:			
NORTH CAROLINA DEPARTMENT OF TRANSPORTATION		UTILITY CONSTRUCTION PLANS ONLY	
UTILITIES ENGINEERING SEC. PHONE: (919) 707-6690 FAX: (919) 250-4151			
<b>UTILITY CONSTRUCTION</b>			
DOCUMENT NOT CONSIDERED FINAL UNLESS ALL SIGNATURES COMPLETED			
<b>CDM Smith</b>		CDM Smith Inc. 5400 Glenwood Avenue Suite 400 Raleigh, NC 27612-3228 NC COA No. F-1255	

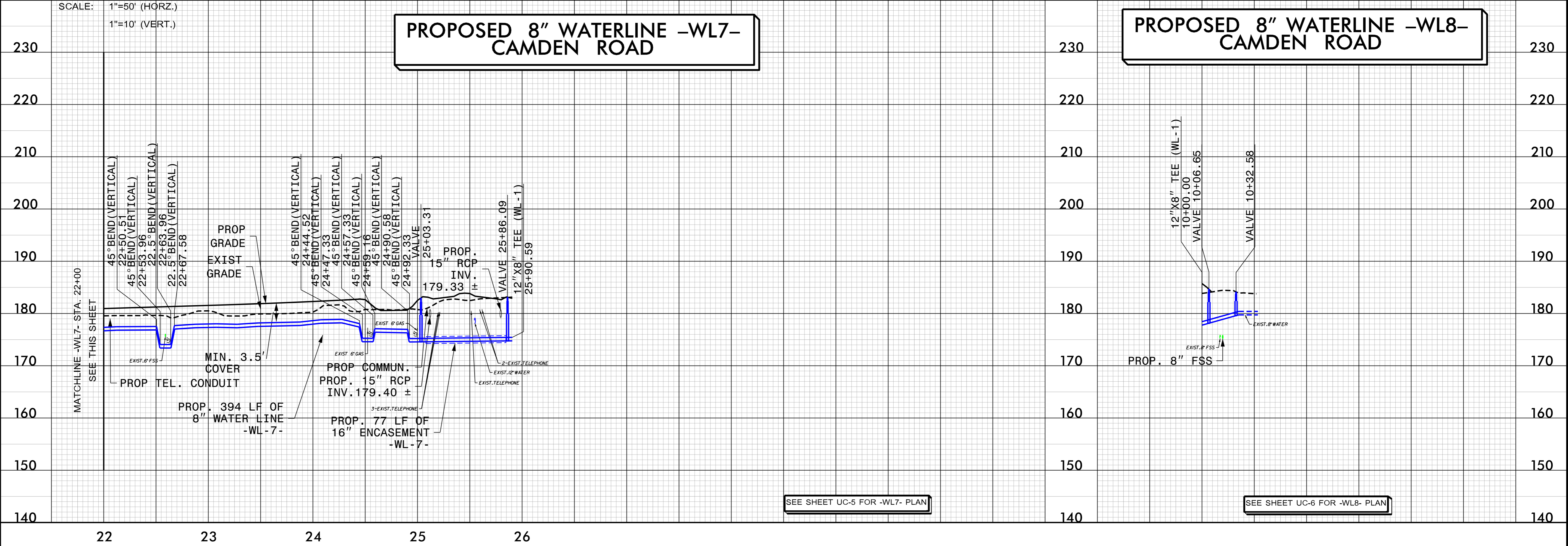


SEE SHEET UC-4 - UC-5 FOR -WL7- PLAN

SCALE: 1"=50' (HORZ.)  
1"=10' (VERT.)

### PROPOSED 8" WATERLINE -WL7- CAMDEN ROAD

### PROPOSED 8" WATERLINE -WL8- CAMDEN ROAD



SEE SHEET UC-5 FOR -WL7- PLAN

SEE SHEET UC-6 FOR -WL8- PLAN

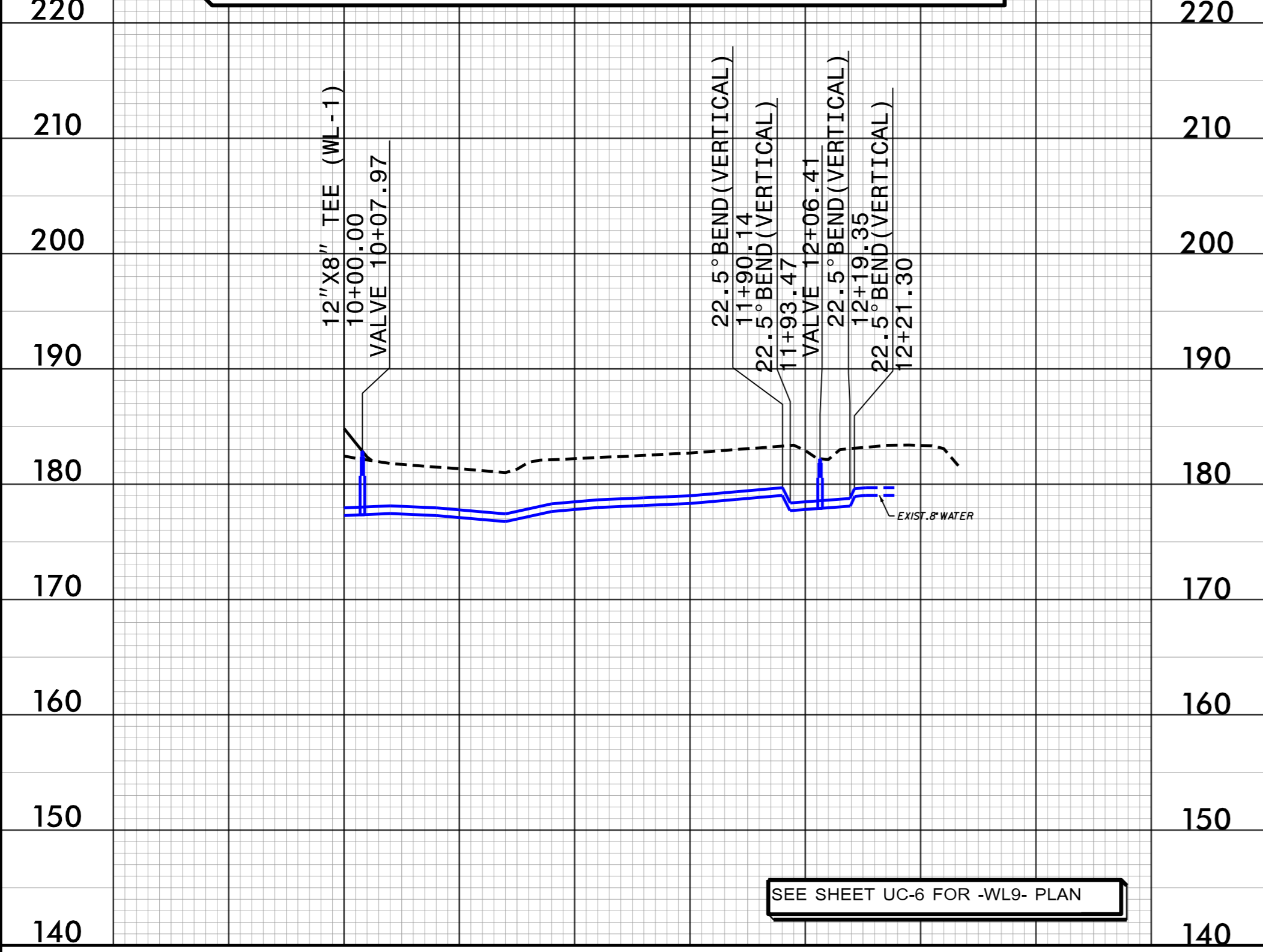
-SYSTEM- A:\0422-Ut\_ucput24.dgn  
11:58:30 PM 5/28/99



5/28/99

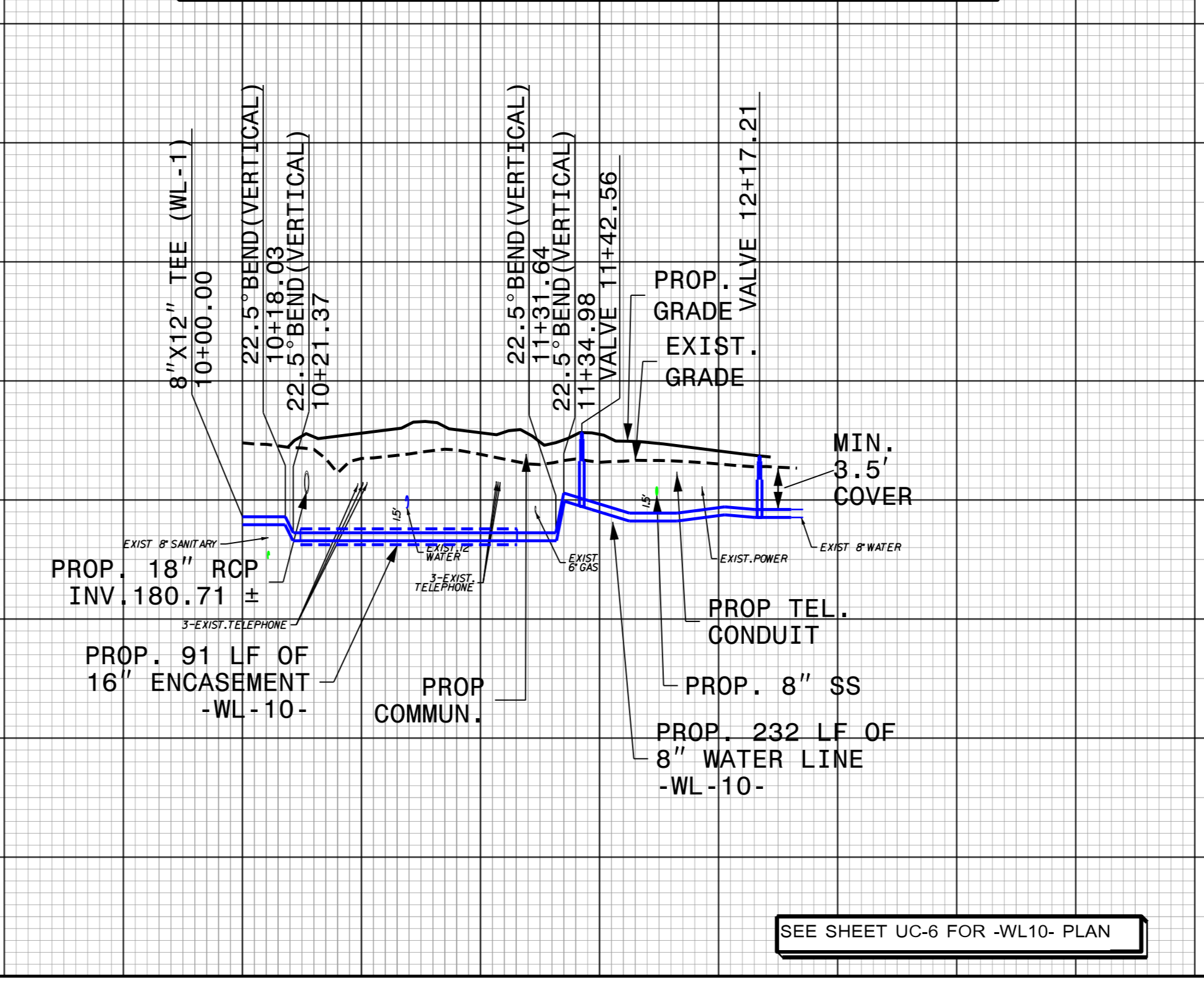
SCALE: 1"=50' (HORZ.)  
1"=10' (VERT.)

### PROPOSED 8" WATERLINE -WL9- CAMDEN ROAD



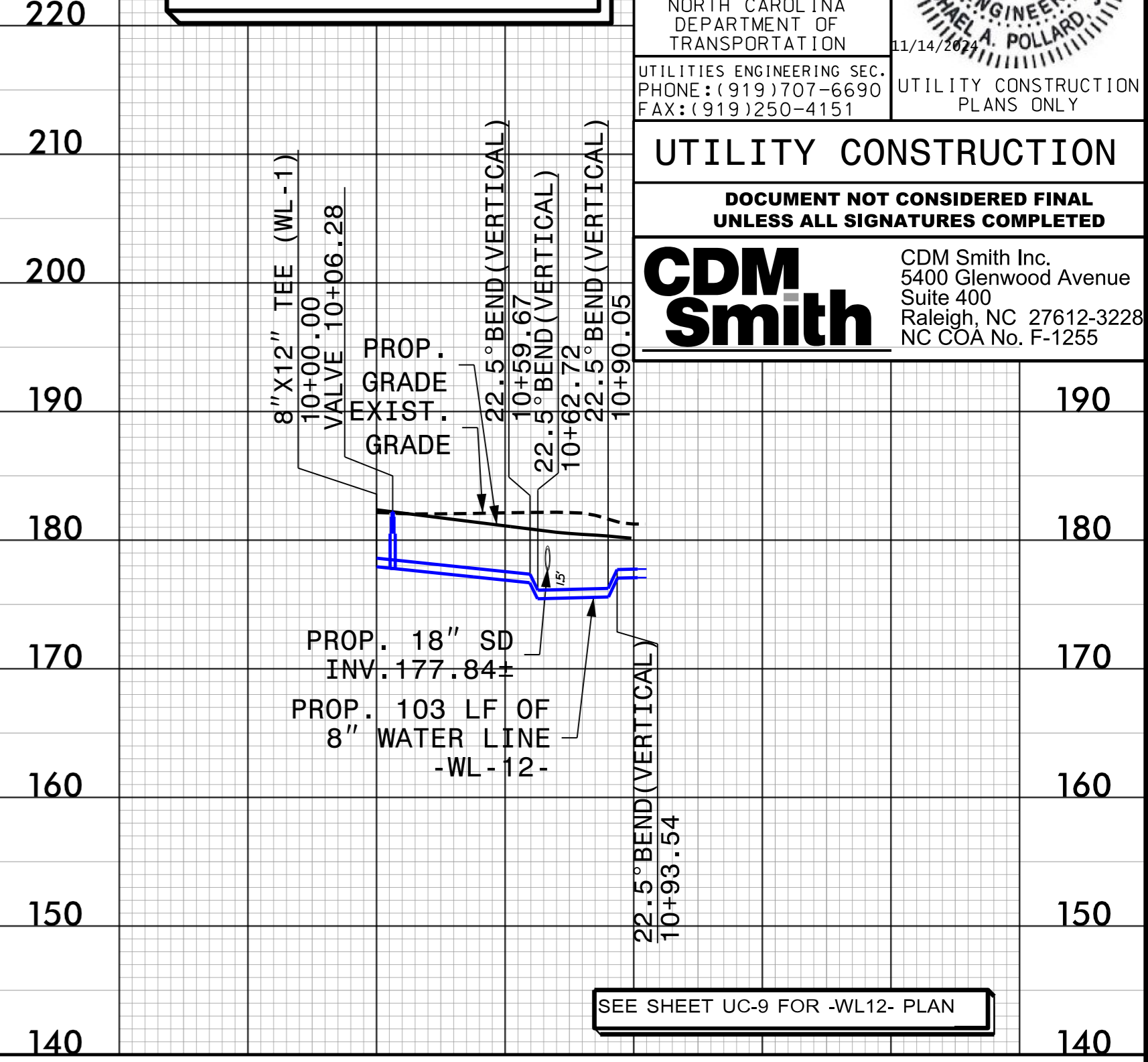
SEE SHEET UC-6 FOR -WL9- PLAN

### PROPOSED 8" WATERLINE -WL10- CAMDEN ROAD



SEE SHEET UC-6 FOR -WL10- PLAN

### PROPOSED 8" WATERLINE -WL12- CAMDEN ROAD



SEE SHEET UC-9 FOR -WL12- PLAN

PROJECT REFERENCE NO. U-3422 SHEET NO. UC-25

DESIGNED BY: SSM  
DRAWN BY: SSM  
CHECKED BY: HMH  
APPROVED BY: MAP  
REVISED:

NORTH CAROLINA DEPARTMENT OF TRANSPORTATION

UTILITIES ENGINEERING SEC. PHONE: (919) 707-6690 FAX: (919) 250-4151

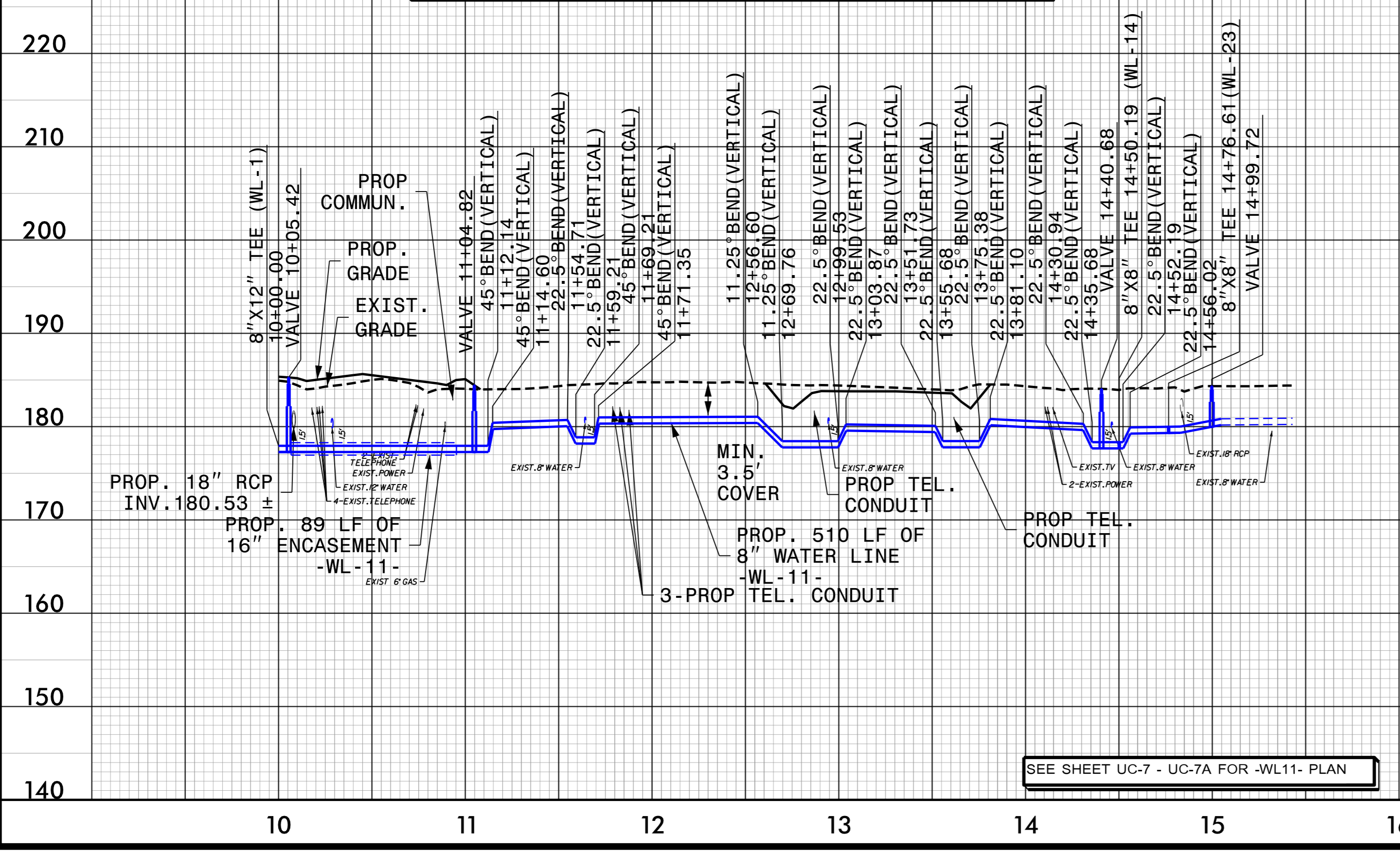
UTILITY CONSTRUCTION PLANS ONLY

DOCUMENT NOT CONSIDERED FINAL UNLESS ALL SIGNATURES COMPLETED

**CDM Smith**  
CDM Smith Inc.  
5400 Glenwood Avenue  
Suite 400  
Raleigh, NC 27612-3228  
NC COA No. F-1255

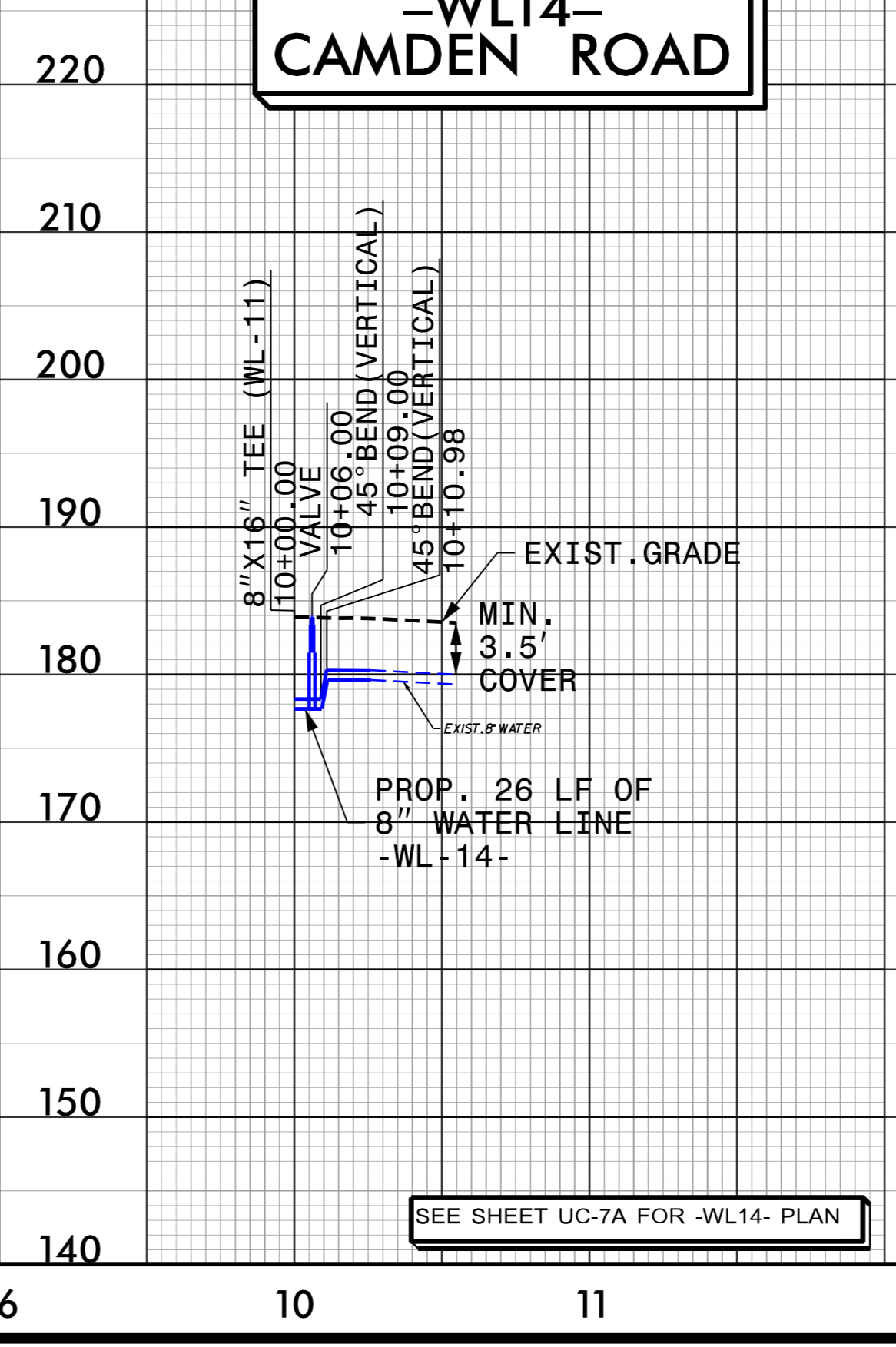
SCALE: 1"=50' (HORZ.)  
1"=10' (VERT.)

### PROPOSED 8" WATERLINE -WL11- CAMDEN ROAD



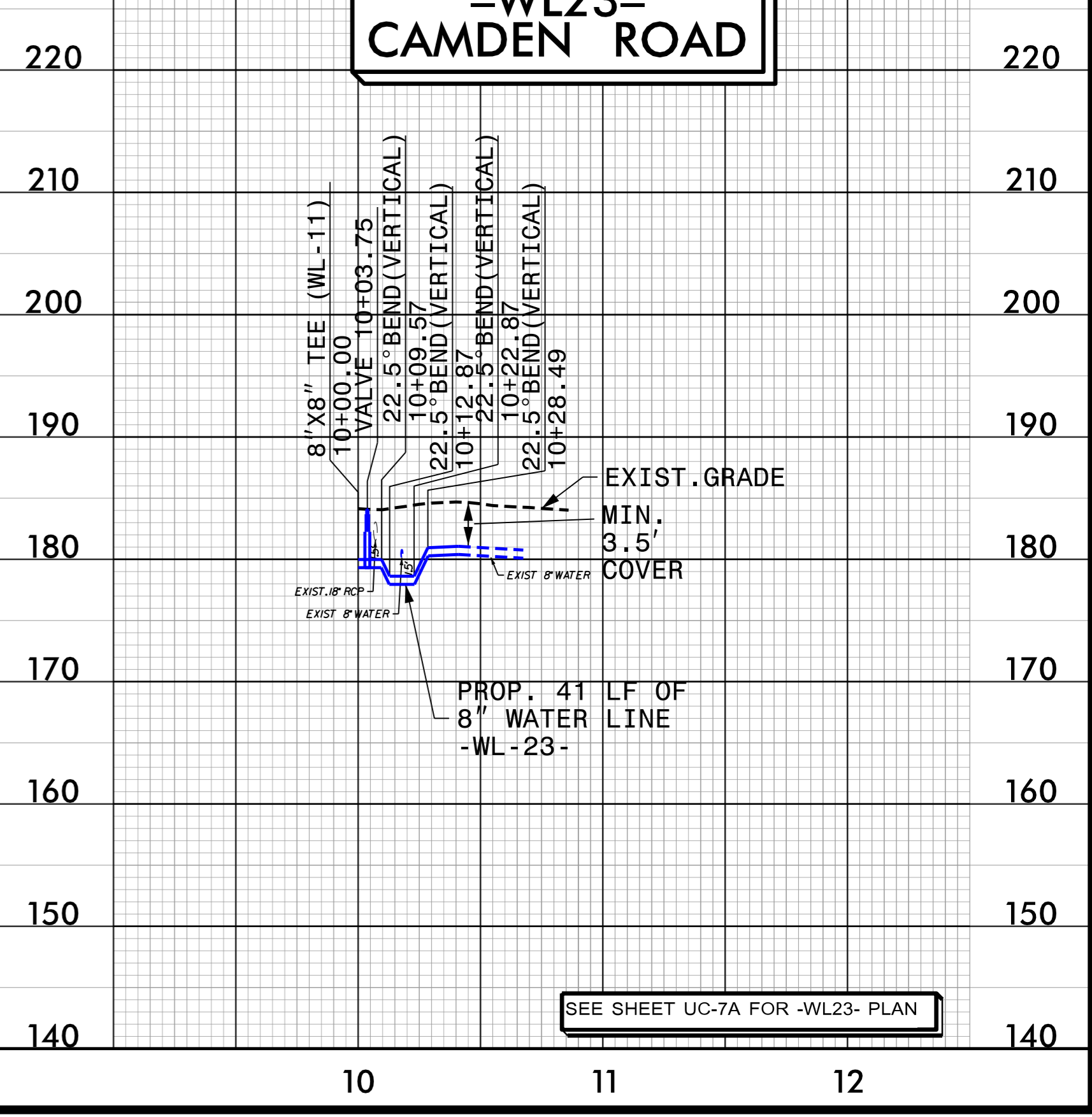
SEE SHEET UC-7 - UC-7A FOR -WL11- PLAN

### PROPOSED 8" WATERLINE -WL14- CAMDEN ROAD



SEE SHEET UC-7A FOR -WL14- PLAN

### PROPOSED 8" WATERLINE -WL23- CAMDEN ROAD



SEE SHEET UC-7A FOR -WL23- PLAN

-SYTIME-AV10422-Ut\_ucput25.dgn  
TUESDAY, FEBRUARY 1, 2000 10:58:58 AM



5/28/99

SCALE: 1"=50' (HORZ.)  
1"=10' (VERT.)

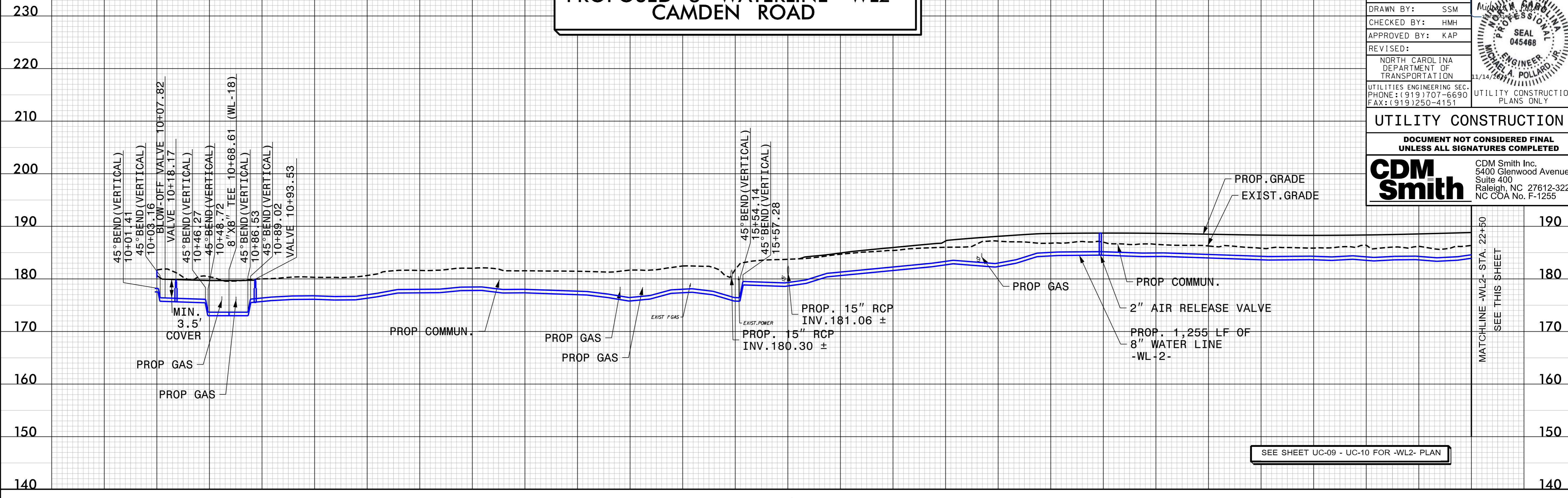
### PROPOSED 8" WATERLINE -WL2- CAMDEN ROAD

PROJECT REFERENCE NO.	U-3422	SHEET NO.	UC-26
DESIGNED BY:	SSM		
DRAWN BY:	SSM		
CHECKED BY:	HMH		
APPROVED BY:	KAP		
REVISED:			
NORTH CAROLINA DEPARTMENT OF TRANSPORTATION		UTILITY CONSTRUCTION PLANS ONLY	
UTILITIES ENGINEERING SEC. PHONE: (919) 707-6690 FAX: (919) 250-4151			

**UTILITY CONSTRUCTION**

**DOCUMENT NOT CONSIDERED FINAL UNLESS ALL SIGNATURES COMPLETED**

**CDM Smith**  
CDM Smith Inc.  
5400 Glenwood Avenue  
Suite 400  
Raleigh, NC 27612-3228  
NC COA No. F-1255

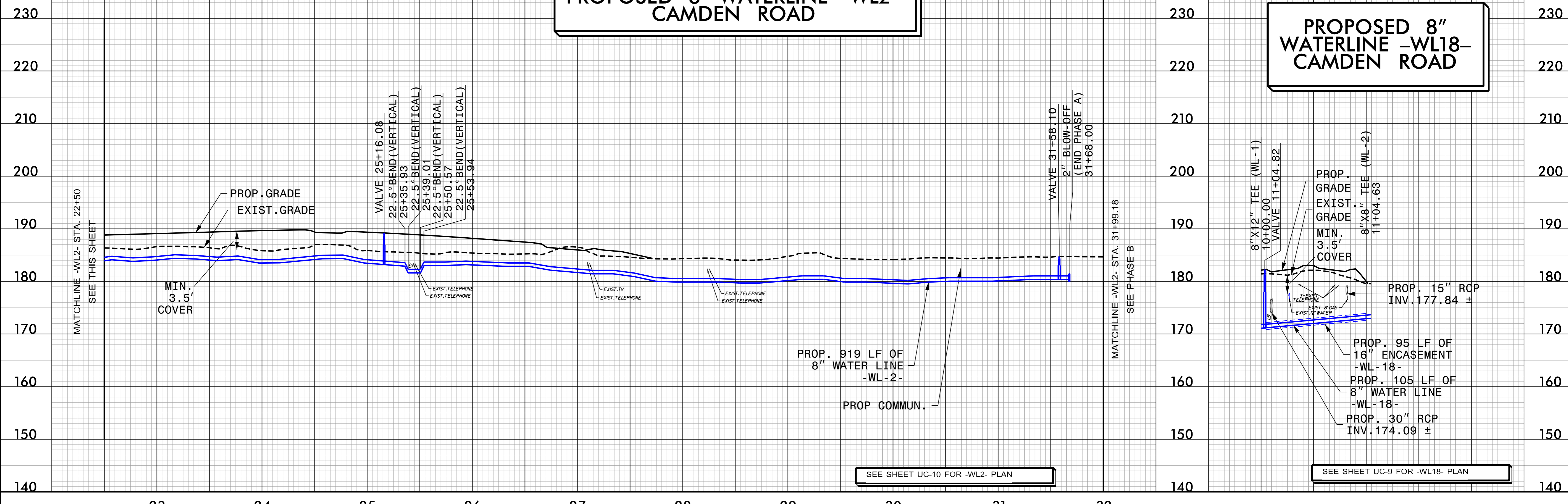


SEE SHEET UC-09 - UC-10 FOR -WL2- PLAN

SCALE: 1"=50' (HORZ.)  
1"=10' (VERT.)

### PROPOSED 8" WATERLINE -WL2- CAMDEN ROAD

### PROPOSED 8" WATERLINE -WL18- CAMDEN ROAD



SEE SHEET UC-10 FOR -WL2- PLAN

SEE SHEET UC-9 FOR -WL18- PLAN

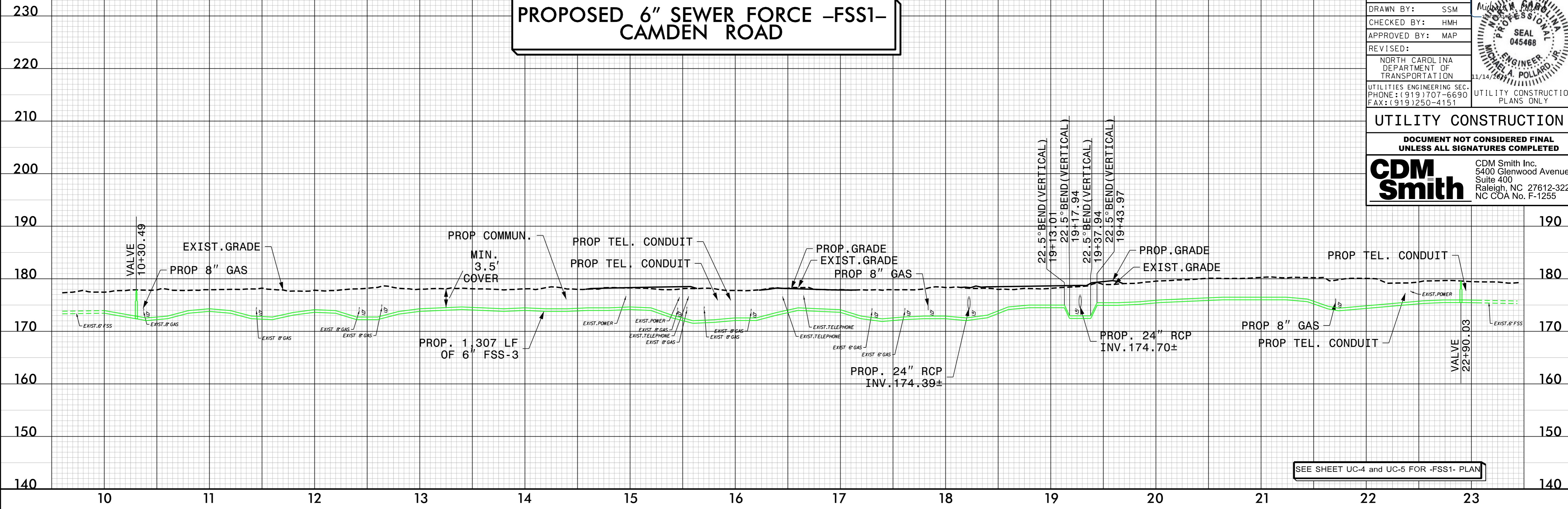
-SYTIME: A:\10422-Ut\_ucput26.dgn  
11:58:38 PM 5/28/99



5/28/99

SCALE: 1"=50' (HORZ.)  
1"=10' (VERT.)

### PROPOSED 6" SEWER FORCE -FSS1- CAMDEN ROAD

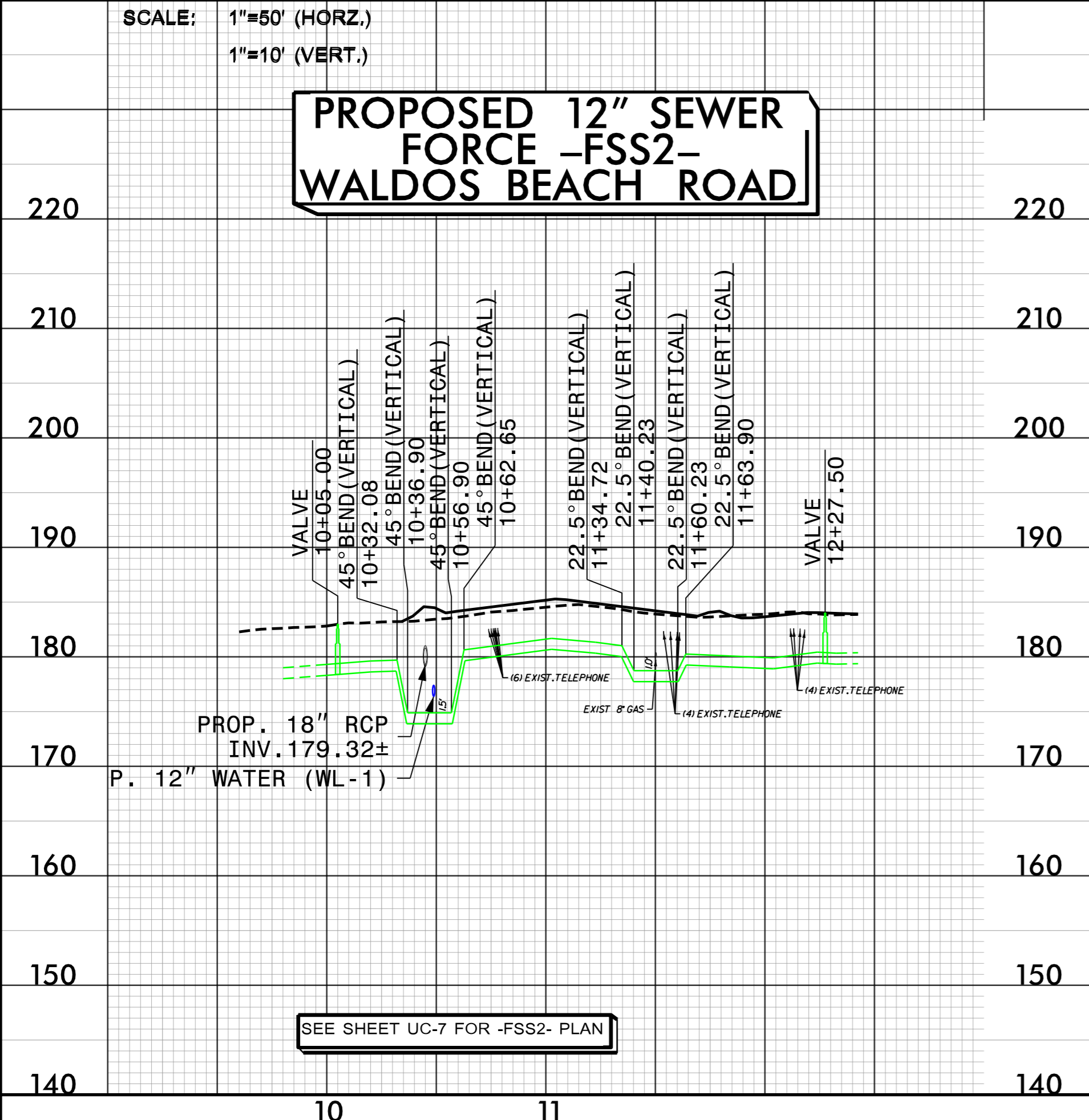


SEE SHEET UC-4 and UC-5 FOR -FSS1- PLAN

PROJECT REFERENCE NO. U-3422	SHEET NO. UC-27
DESIGNED BY: SSM	
DRAWN BY: SSM	
CHECKED BY: HMH	
APPROVED BY: MAP	
REVISED:	
NORTH CAROLINA DEPARTMENT OF TRANSPORTATION UTILITIES ENGINEERING SEC. PHONE: (919) 707-6690 FAX: (919) 250-4151	
UTILITY CONSTRUCTION PLANS ONLY	
<b>UTILITY CONSTRUCTION</b>	
DOCUMENT NOT CONSIDERED FINAL UNLESS ALL SIGNATURES COMPLETED	
<b>CDM Smith</b>	CDM Smith Inc. 5400 Glenwood Avenue Suite 400 Raleigh, NC 27612-3228 NC COA No. F-1255

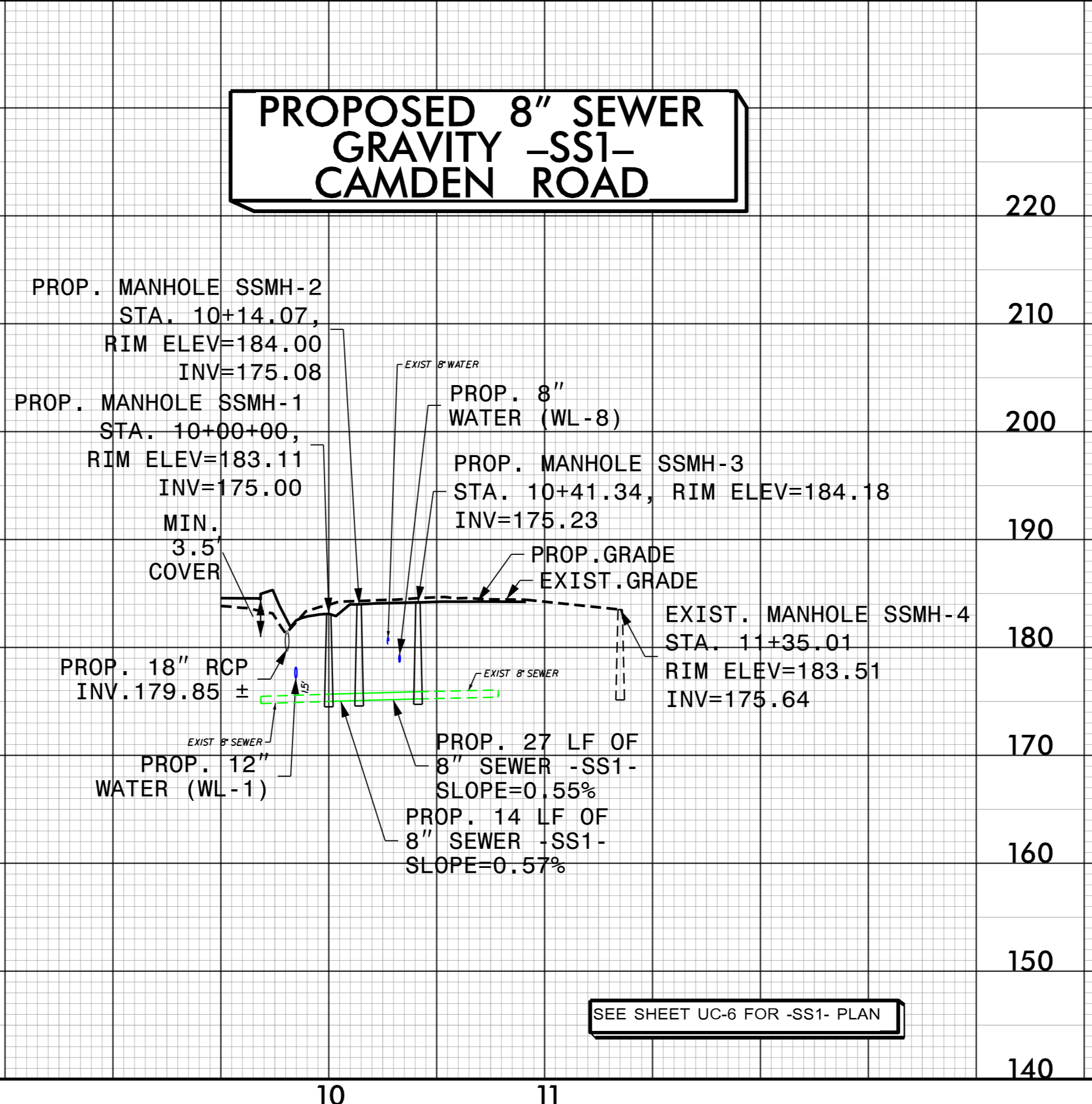
SCALE: 1"=50' (HORZ.)  
1"=10' (VERT.)

### PROPOSED 12" SEWER FORCE -FSS2- WALDOS BEACH ROAD



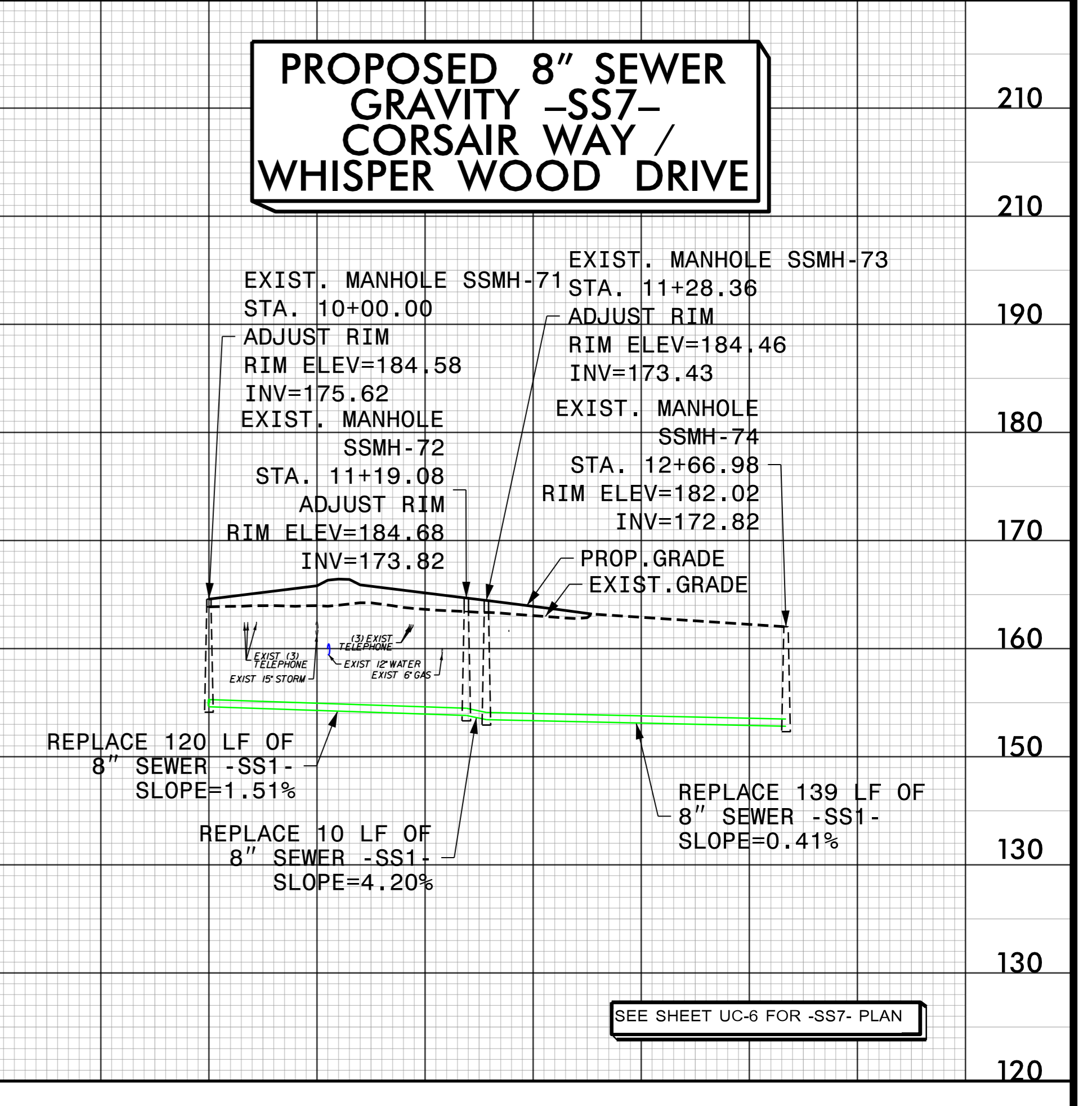
SEE SHEET UC-7 FOR -FSS2- PLAN

### PROPOSED 8" SEWER GRAVITY -SS1- CAMDEN ROAD



SEE SHEET UC-6 FOR -SS1- PLAN

### PROPOSED 8" SEWER GRAVITY -SS7- CORSAIR WAY / WHISPER WOOD DRIVE



SEE SHEET UC-6 FOR -SS7- PLAN

-SYTIME- A:\0422-Ut\_ucput27.dgn  
11:58:50 AM 5/28/99