

- 1 INSTALL COAX CABLE
- 2 INSTALL ETHERNET CABLE
- 3 EXISTING ETHERNET (OR COAX) CABLE
- 4 INSTALL SMFO CABLE
- 5 EXISTING SMFO CABLE
- 6 INSTALL FIBER OPTIC DROP CABLE
- 7 INSTALL TRACER WIRE
- 8 TRENCH
- 9 INSTALL PVC CONDUIT
- 10 INSTALL RIGID, GALVANIZED STEEL CONDUIT
- 11 INSTALL RIGID, GALVANIZED STEEL RISER WITH WEATHERHEAD
- 12 INSTALL RIGID, GALVANIZED STEEL RISER WITH FIBER OPTIC CABLE SEAL
- 13 INSTALL OUTER-DUCT POLYETHYLENE CONDUIT
- 14 INSTALL POLYETHYLENE CONDUIT
- 15 DIRECTIONAL DRILL CONDUIT
- 16 BORE AND JACK CONDUIT
- 17 INSTALL CABLE(S) IN EXISTING CONDUIT
- 18 INSTALL CABLE(S) IN NEW CONDUIT
- 19 INSTALL CABLE(S) IN EXISTING RISER
- 20 INSTALL CABLE(S) IN NEW RISER
- 21 INSTALL CABLE(S) IN EXISTING CONDUIT STUB-OUTS
- 22 INSTALL NEW CONDUIT INTO EXISTING CABINET BASE (USE EXISTING CONDUIT STUB-OUTS WHEN AVAILABLE)
- 23 INSTALL NEW RISER INTO EXISTING CABINET BASE (USE EXISTING CONDUIT STUB-OUTS WHEN AVAILABLE)
- 24 INSTALL NEW CONDUIT INTO EXISTING POLE MOUNTED CABINET
- 25 INSTALL NEW RISER INTO EXISTING POLE MOUNTED CABINET
- 26 INSTALL NEW ETHERNET EDGE SWITCH
- 27 INSTALL NEW FIBER OPTIC TRANSCEIVER
- 28 INSTALL INTERCONNECT CENTER, PATCH PANEL, AND PROVIDE JUMPERS FOR FUTURE FUSION SPLICE CABLE IN CABINET
- 29 INSTALL UNDERGROUND SPLICE ENCLOSURE
- 30 INSTALL AERIAL SPLICE ENCLOSURE
- 31 MODIFY EXISTING INTERCONNECT CENTER /SPLICE ENCLOSURE
- 32 INSTALL POLE MOUNTED SPLICE CABINET
- 33 INSTALL BASE MOUNTED SPLICE CABINET

- 34 INSTALL CABINET FOUNDATION
- 35 INSTALL CCTV CAMERA POLE MOUNTED CABINET
- 36 INSTALL CCTV CAMERA ASSEMBLY
- 37 INSTALL CCTV CAMERA WOOD POLE
- 38 INSTALL CCTV CAMERA METAL POLE AND FOUNDATION
- 39 INSTALL JUNCTION BOX
- 40A INSTALL OVERSIZED JUNCTION BOX
- 40B INSTALL SPECIAL OVERSIZED JUNCTION BOX (36" x 24" x 24")
- 41 REMOVE EXISTING JUNCTION BOX
- 42 INSTALL WOOD POLE
- 43 REMOVE EXISTING WOOD POLE
- 44 INSTALL AERIAL GUY ASSEMBLY
- 45 INSTALL STANDARD GUY ASSEMBLY
- 46 INSTALL SIDEWALK GUY ASSEMBLY
- 47 INSTALL MESSENGER CABLE
- 48A REMOVE EXISTING COMMUNICATIONS AND MESSENGER CABLE
- 48B REMOVE EXISTING COMMUNICATIONS CABLE
- 49 BACK PULL EXISTING COMMUNICATIONS CABLE
- 50 MAINTAIN CELL MODEM AND ANTENNA
- 51 INSTALL CABLE STORAGE RACKS (SNOW SHOES) AND STORE 100 FEET OF CABLE
- 52A INSTALL DELINEATOR MARKER
- 52B INSTALL JUNCTION BOX MARKER
- 53A STORE 20 FEET OF COMMUNICATIONS CABLE
- 53B STORE 50 FEET OF EACH COMMUNICATIONS CABLE
- 54 LASH CABLE(S) TO EXISTING COMMUNICATIONS CABLE
- 55 LASH CABLE(S) TO EXISTING MESSENGER CABLE
- 56 LASH CABLE(S) TO NEW MESSENGER CABLE
- 57 MODIFY EXISTING ELECTRICAL SERVICE
- 58 INSTALL NEW ELECTRICAL SERVICE
- 59 INSTALL NEW EQUIPMENT CABINET DISCONNECT
- 60 BOND TRACER WIRE TO EQUIPMENT GROUND BUS
- 61 DO NOT BOND TRACER WIRE TO EQUIPMENT GROUND BUS
- 62 BOND RISER AND MESSENGER CABLE TO POLE GROUND
- 63 BOND RISER TO POLE GROUND
- 64 BOND MESSENGER CABLE TO POLE GROUND
- 65 INSTALL HEAT SHRINK TUBING RETROFIT KIT
- 66 INSTALL MOLDABLE DUCT SEAL
- 67 SLACK SPAN
- 68 MODIFY RADIO INSTALLATION

**LEGEND**

- NEW FIBER OPTIC COMMUNICATIONS CABLE
- EXISTING COMMUNICATIONS CABLE
- EXISTING COMMUNICATIONS CABLE TO BE REMOVED
- NEW AERIAL GUY ASSEMBLY
- NEW CONDUIT
- EXISTING CONDUIT
- NEW DIRECTIONAL DRILLED CONDUIT

NEW		EXISTING
	OVERSIZED JUNCTION BOX	
	WOOD POLE	
	AERIAL SPLICE ENCLOSURE	
	UNDERGROUND SPLICE ENCLOSURE	
	METAL POLE	
	CCTV ASSEMBLY	
	STANDARD GUY ASSEMBLY	
	SIDEWALK GUY ASSEMBLY	
	CABLE STORAGE RACKS (SNOW SHOES)	
	SIGNAL/EQUIPMENT CABINET	
	GATEWAY CABINET	
	SPLICE CABINET	
	FLAT PANEL ANTENNA (SINGLE)	
	YAGI ANTENNA (DOUBLE) FOR REPEATER OPERATION	
	YAGI ANTENNA (SINGLE)	
	OMNI ANTENNA	
	SIGNAL POLE	
	SIGNAL INVENTORY NUMBER	

**CONSTRUCTION NOTE SYMBOLOGY KEY**

- INDICATES NUMBER OF CABLES, LOOPS, ETC.
- INDICATES NUMBER OF FIBERS PER CABLE, TWISTED PAIRS PER CABLE, ETC.
- INDICATES NUMBER OF RISER(S)/CONDUIT(S)
- INDICATES DIAMETER OF RISER(S)/CONDUIT(S) (INCH)

NUMBER OF CABLE(S)      NUMBER OF FIBERS/TWISTED PAIRS

NUMBER OF RISER(S)/CONDUIT(S)      DIAMETER OF RISER(S)/CONDUIT(S) (INCH)

— NEW/EXISTING CABLE  
— REMOVE/MODIFY CABLE  
— CONDUIT/RISER

DOCUMENT NOT CONSIDERED FINAL UNLESS ALL SIGNATURES COMPLETED

Plans Prepared By:

DRMP, Inc.  
8210 University Executive Park Drive, Suite 220  
Charlotte, NC 28262  
NC License No. F-1524 (704) 332-2289  
www.DRMP.com

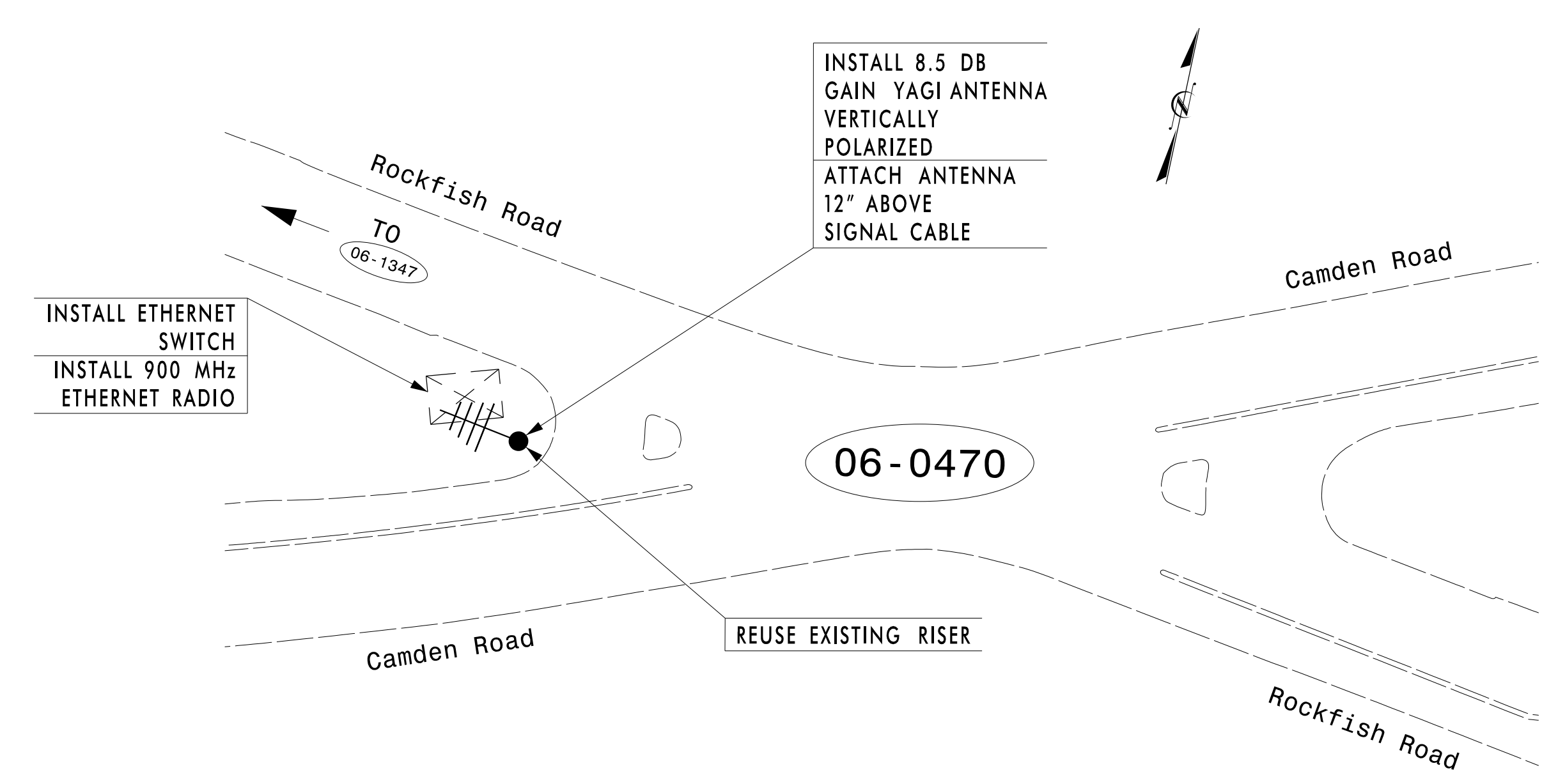
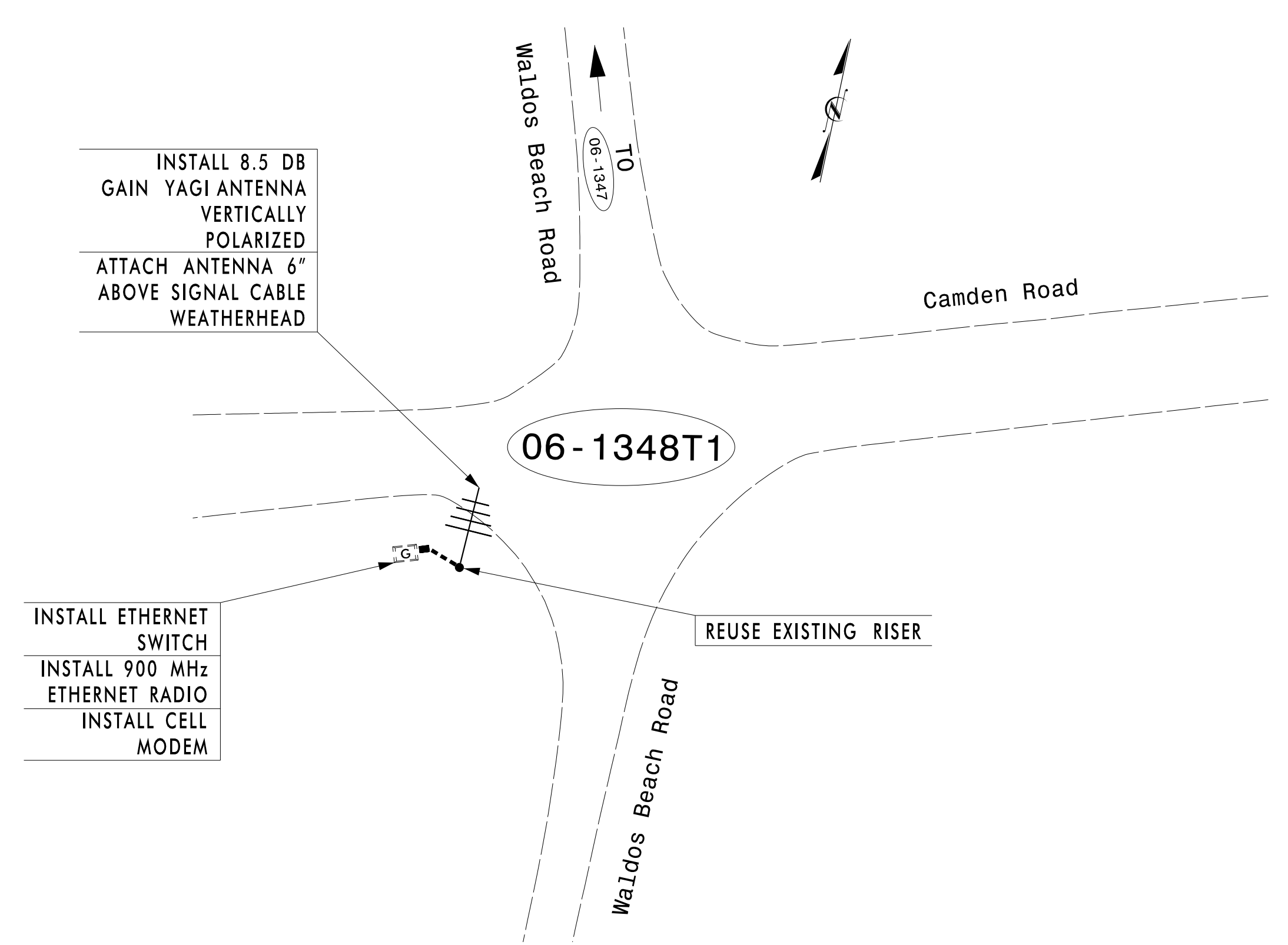
Prepared For:

750 N. Greenfield Pkwy., Garner, NC 27529

CONSTRUCTION NOTES			
Division 6	Cumberland County	Hope Mills	
PLAN DATE: August 2024	REVIEWED BY: LM Moon		
PREPARED BY: JA Wendt/DJW	DRMP PROJ. NO.: 2400555		
REVISIONS	INIT.	DATE	

SEAL

Lisa Moon      10/3/2024  
DATE



**PROJECT NOTES (WIRELESS):**

1. UPDATE THE EXISTING D06-28 HOPE MILLS CLOSED LOOP SYSTEM TO HAVE ETHERNET WIRELESS RADIOS AS SHOWN ON SCP-2 AND SCP-3 IN CONJUNCTION WITH UPDATE TO MAXTIME SOFTWARE AS SHOWN ON SIG. 2.0 AND SIG. 5.0 THROUGH SIG. 8.0.

**WIRELESS INSTALLATION NOTES:**

- 1) INSTALL COAXIAL CABLE
  - A. ON METAL STRAIN POLES, RUN COAXIAL CABLE UP THROUGH THE POLE AND OUT THE WEATHERHEAD AND ROUTE THE COAXIAL CABLE TO THE ANTENNA.
  - B. BETWEEN THE POINT OF EXITING THE RISER, METAL POLE, AND THE ANTENNA, SECURE THE COAXIAL CABLE TO THE STRUCTURE USING 3/4" STAINLESS STEEL STRAPS EVERY 12".
- 2) IF AN EXISTING 2" SPARE RIGID GALVANIZED STEEL RISER IS AVAILABLE, INSTALL THE COAXIAL CABLE IN THE SPARE RISER.
- 3) INSTALL WIRELESS ANTENNA ON POLE WITH RF WARNING SIGN. (NOTE: RF WARNING SIGN NOT REQUIRED WHEN ANTENNA IS INSTALLED ON AN NCDOT-OWNED POLE.)
- 4) MAINTAIN PROPER CLEARANCE FROM ALL UTILITIES PER THE NATIONAL ELECTRICAL SAFETY CODE.
- 5) INSTALL WIRELESS SERIAL RADIO MODEM WITH EXTERIOR DISCONNECT SWITCH LOCATED ON CABINET. (NOTE: RF ANTENNA DISCONNECT SWITCH AND DECAL ARE NOT REQUIRED WHEN THE ANTENNA IS INSTALLED ON AN NCDOT-OWNED POLE.)
- 6) REFERENCE "WIRELESS RADIO ANTENNA TYPICAL DETAILS."
- 7) REQUEST A CELL MODEM FROM DIVISION TRAFFIC ENGINEER (910)364-0600 AND ALLOW DIVISION AN EIGHT WEEK LEAD TIME TO ACQUIRE THE CELL MODEM.

**LEGEND**

	YAGI ANTENNA (SINGLE)
	OMNI ANTENNA
	EXISTING CONTROLLER AND CABINET
	EXISTING GATEWAY CABINET
	SIGNAL INVENTORY NUMBER
	EXISTING METAL POLE
	EXISTING WOOD POLE

09-SEP-2024 16:46  
 P:\P\Projects\2400555-000\_NCDOT-U-3422A\_Camden-Rd\_Signal-Sub\Carroll\mas-VAK\FSD\AS\Signal\_Communications\SCP-2.dgn  
 DWI:118 AT CAR-DWH:118

Plans Prepared By:

DRMP, Inc.  
 8210 University Executive Park Drive, Suite 220  
 Charlotte, NC 28263  
 NC License No. F-1524 (704) 332-2288  
 www.DRMP.com

TMP PHASE 1

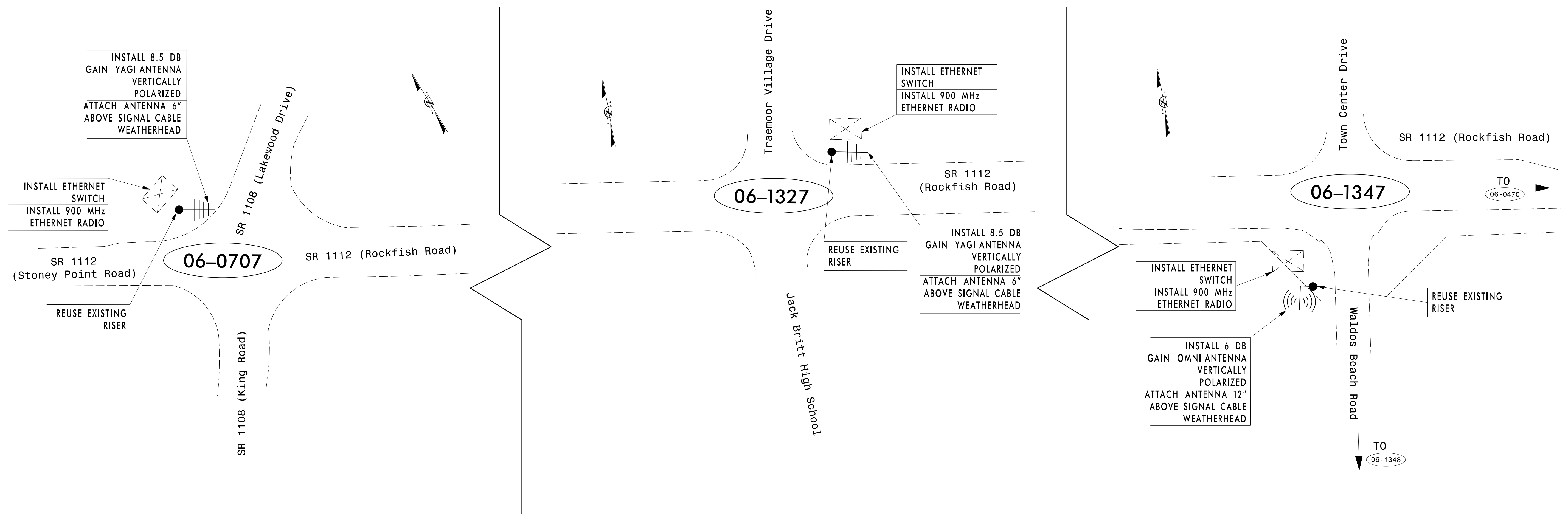
Prepared For:  NORTH CAROLINA DEPARTMENT OF TRANSPORTATION		Camden Road CLS Wireless Communication Plans	
Division 6		Cumberland County Hope Mills	
PLAN DATE: August 2024	REVIEWED BY: LM Moon		
PREPARED BY: JA Wendt/DJW	DRMP PROJ. NO: 2400555		
SCALE: 0 N/A	SCALE: N/A	REVISIONS	INIT. DATE

DOCUMENT NOT CONSIDERED FINAL UNLESS ALL SIGNATURES COMPLETED

SEAL

Lisa Moon 10/3/2024





**PROJECT NOTES (WIRELESS):**

1. UPDATE THE EXISTING D06-28 HOPE MILLS CLOSED LOOP SYSTEM TO HAVE ETHERNET WIRELESS RADIOS AS SHOWN ON SCP-2 AND SCP-3 IN CONJUNCTION WITH UPDATE TO MAXTIME SOFTWARE AS SHOWN ON SIG. 2.0 AND SIG. 5.0 THROUGH SIG. 8.0.

**WIRELESS INSTALLATION NOTES:**

- 1) INSTALL COAXIAL CABLE
  - A. ON METAL STRAIN POLES, RUN COAXIAL CABLE UP THROUGH THE POLE AND OUT THE WEATHERHEAD AND ROUTE THE COAXIAL CABLE TO THE ANTENNA.
  - B. BETWEEN THE POINT OF EXITING THE RISER, METAL POLE, AND THE ANTENNA, SECURE THE COAXIAL CABLE TO THE STRUCTURE USING 3/4" STAINLESS STEEL STRAPS EVERY 12".
- 2) IF AN EXISTING 2" SPARE RIGID GALVANIZED STEEL RISER IS AVAILABLE, INSTALL THE COAXIAL CABLE IN THE SPARE RISER.
- 3) INSTALL WIRELESS ANTENNA ON POLE WITH RF WARNING SIGN. (NOTE: RF WARNING SIGN NOT REQUIRED WHEN ANTENNA IS INSTALLED ON AN NCDOT-OWNED POLE.)
- 4) MAINTAIN PROPER CLEARANCE FROM ALL UTILITIES PER THE NATIONAL ELECTRICAL SAFETY CODE.
- 5) INSTALL WIRELESS SERIAL RADIO MODEM WITH EXTERIOR DISCONNECT SWITCH LOCATED ON CABINET. (NOTE: RF ANTENNA DISCONNECT SWITCH AND DECAL ARE NOT REQUIRED WHEN THE ANTENNA IS INSTALLED ON AN NCDOT-OWNED POLE.)
- 6) REFERENCE "WIRELESS RADIO ANTENNA TYPICAL DETAILS."
- 7) REQUEST A CELL MODEM FROM DIVISION TRAFFIC ENGINEER (910)364-0600 AND ALLOW DIVISION AN EIGHT WEEK LEAD TIME TO ACQUIRE THE CELL MODEM.

**LEGEND**

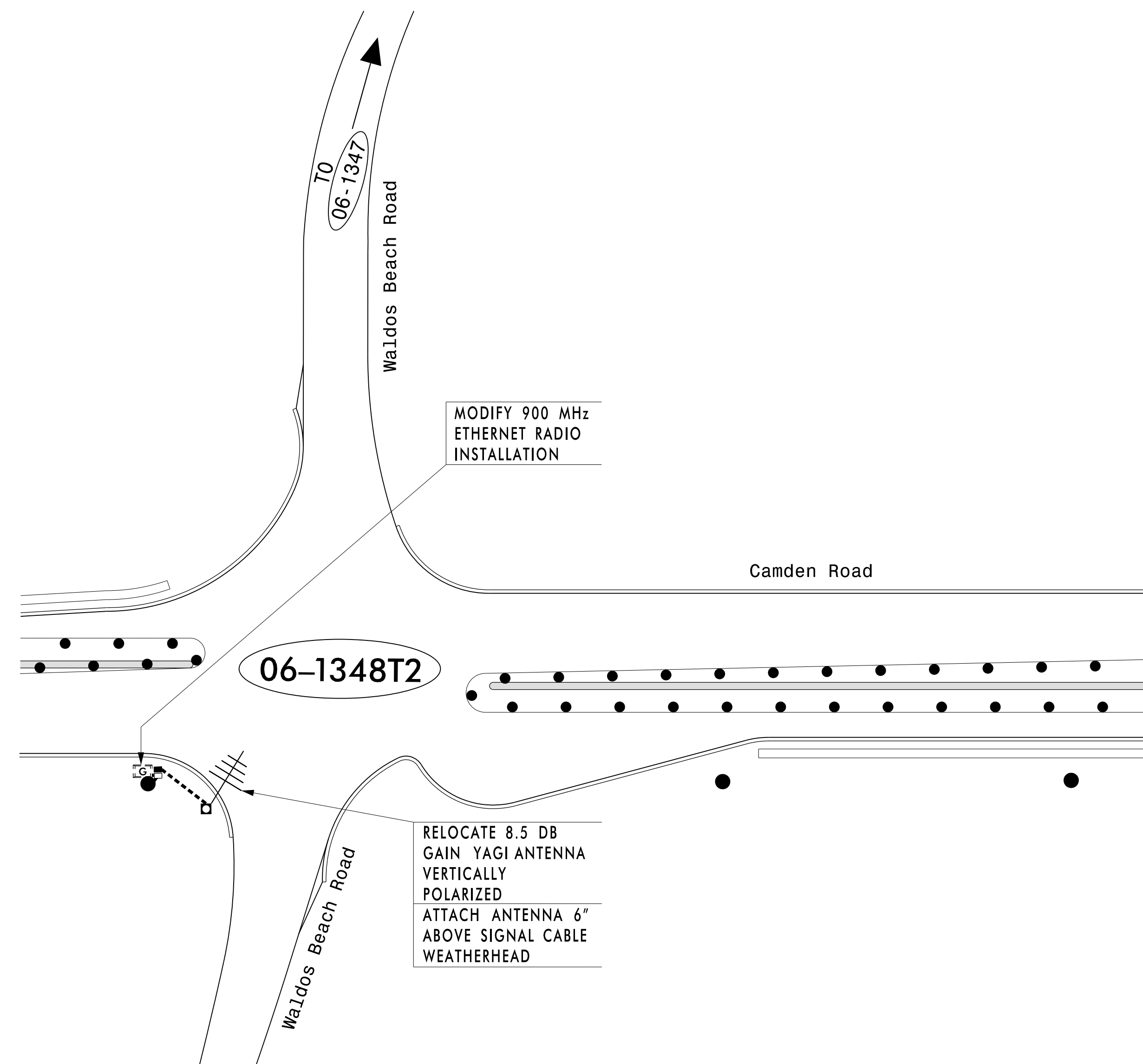
	<b>YAGI ANTENNA (SINGLE)</b>
	<b>OMNI ANTENNA</b>
	<b>EXISTING CONTROLLER AND CABINET</b>
	<b>EXISTING GATEWAY CABINET</b>
	<b>SIGNAL INVENTORY NUMBER</b>
	<b>EXISTING METAL POLE</b>
	<b>EXISTING WOOD POLE</b>

09-SEP-2024 16:46 P:\P\Projects\2400555-000-NCDDT-U-3422A-Comden-Rd-Signal-Sub\Coro1\Ins-VAK\TSM\AS\Signal-Comm\comm\ons\SCP-3.dgn DWI:118 AT CAR-DWH:118



**TMP PHASE 1**

 Prepared For:		<b>Camden Road CLS</b> <b>Wireless Communication Plans</b>		DOCUMENT NOT CONSIDERED FINAL UNLESS ALL SIGNATURES COMPLETED
Division 6 Cumberland County Hope Mills		SEAL  Lisa M. Moon 10/3/2024		
PLAN DATE: August 2024 REVIEWED BY: LM Moon		PREPARED BY: JA Wendt/DJW DRMP PROJ. NO: 2400555		
SCALE: 0 N/A 		REVISIONS:		
		INIT. DATE		



MODIFY 900 MHz  
ETHERNET RADIO  
INSTALLATION

RELOCATE 8.5 DB  
GAIN YAGI ANTENNA  
VERTICALLY  
POLARIZED  
ATTACH ANTENNA 6"  
ABOVE SIGNAL CABLE  
WEATHERHEAD

**PROJECT NOTES (WIRELESS):**

- FOR 06-1348T2, MODIFY RADIO INSTALLATION BY RELOCATING ANTENNA TO NEW METAL SIGNAL POLE.

**WIRELESS INSTALLATION NOTES:**

- INSTALL COAXIAL CABLE
  - ON METAL STRAIN POLES, RUN COAXIAL CABLE UP THROUGH THE POLE AND OUT THE WEATHERHEAD AND ROUTE THE COAXIAL CABLE TO THE ANTENNA.
  - BETWEEN THE POINT OF EXITING THE RISER, METAL POLE, AND THE ANTENNA, SECURE THE COAXIAL CABLE TO THE STRUCTURE USING 3/4" STAINLESS STEEL STRAPS EVERY 12".
- IF AN EXISTING 2" SPARE RIGID GALVANIZED STEEL RISER IS AVAILABLE, INSTALL THE COAXIAL CABLE IN THE SPARE RISER.
- INSTALL WIRELESS ANTENNA ON POLE WITH RF WARNING SIGN. (NOTE: RF WARNING SIGN NOT REQUIRED WHEN ANTENNA IS INSTALLED ON AN NCDOT-OWNED POLE.)
- MAINTAIN PROPER CLEARANCE FROM ALL UTILITIES PER THE NATIONAL ELECTRICAL SAFETY CODE.
- INSTALL WIRELESS SERIAL RADIO MODEM WITH EXTERIOR DISCONNECT SWITCH LOCATED ON CABINET. (NOTE: RF ANTENNA DISCONNECT SWITCH AND DECAL ARE NOT REQUIRED WHEN THE ANTENNA IS INSTALLED ON AN NCDOT-OWNED POLE.)
- REFERENCE "WIRELESS RADIO ANTENNA TYPICAL DETAILS."
- REQUEST A CELL MODEM FROM DIVISION TRAFFIC ENGINEER (910)364-0600 AND ALLOW DIVISION AN EIGHT WEEK LEAD TIME TO ACQUIRE THE CELL MODEM.

**LEGEND**

	YAGI ANTENNA (SINGLE)
	OMNI ANTENNA
	EXISTING CONTROLLER AND CABINET
	EXISTING GATEWAY CABINET
	SIGNAL INVENTORY NUMBER
	EXISTING METAL POLE
	EXISTING WOOD POLE

Plans Prepared By:

DRMP, Inc.  
8210 University Executive Park Drive, Suite 220  
Charlotte, NC 28262  
NC License No. F-1624 (704) 332-2289  
www.DRMP.com

**TMP PHASE 2**

		Prepared For: <b>Camden Road CLS Wireless Communication Plans</b>	
Division 6 Cumberland County Hope Mills		PLAN DATE: August 2024 REVIEWED BY: LM Moon	
PREPARED BY: JA Wendt/DJW		DRMP PROJ. NO: 2400555	
REVISIONS	INIT.	DATE	

DOCUMENT NOT CONSIDERED FINAL UNLESS ALL SIGNATURES COMPLETED

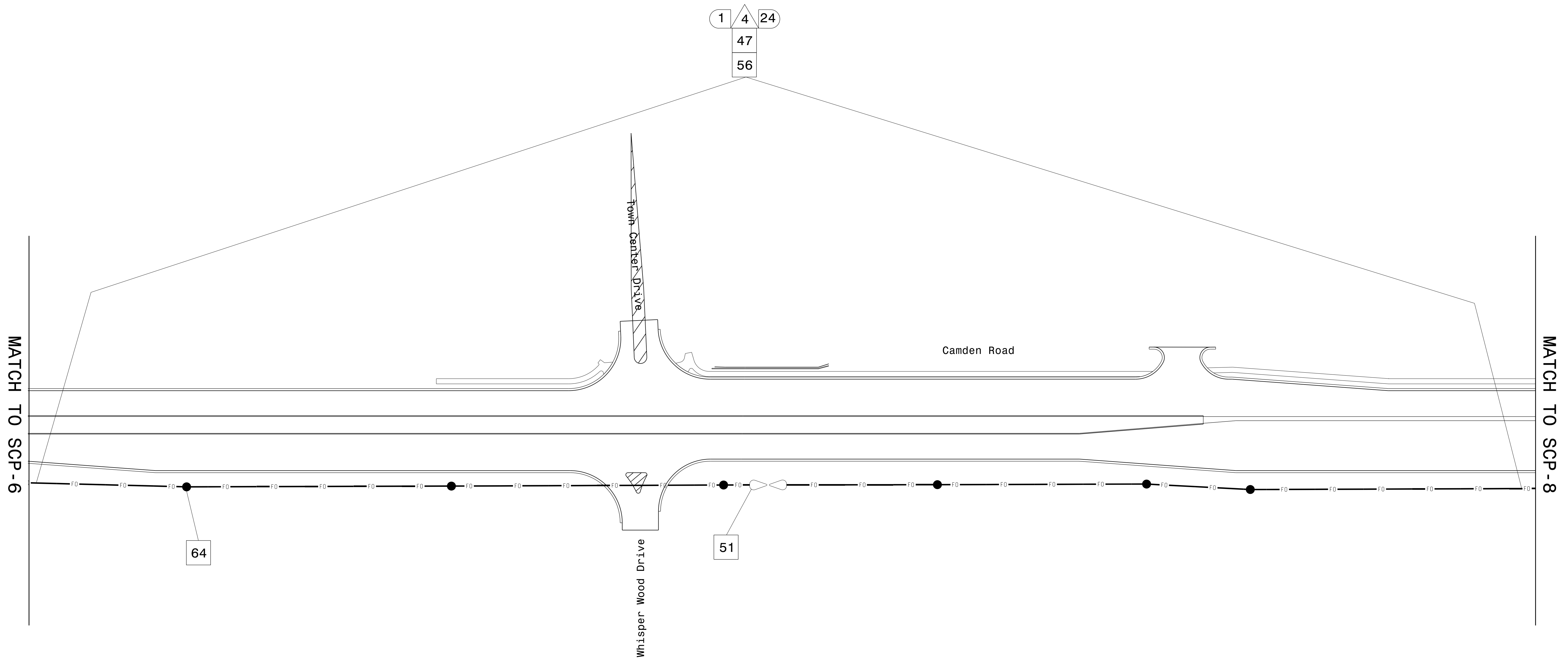
SEAL

Lisa Moon 10/3/2024  
DATE









**PROJECT NOTES (FIBER):**

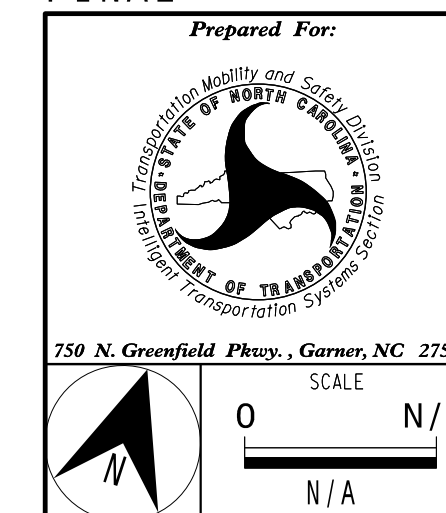
1. THE WIRELESS CLOSED LOOP SYSTEM SHALL BE MAINTAINED.
2. FIBER OPTIC CABLE EQUIPMENT AS SHOWN ON PLANS SHALL BE INSTALLED FOR FUTURE USE.
3. ALL FIBER OPTIC EQUIPMENT SHOWN SHALL BE INSTALLED, BUT NO SPLICING WILL BE PERFORMED. COIL AND CAP ALL FIBER OPTIC CABLES AT ENDS. SPLICING WILL BE DONE BY OTHERS.
4. FIBER OPTIC CABLE SHALL BE TESTED AFTER INSTALLATION TO ENSURE FUTURE COMMUNICATIONS ALONG ROUTE.
5. INSTALL 200' OF SLACK FO CABLE AT THIS LOCATION.

**FIBER INSTALLATION NOTES:**

- 1) CONTACT ENGINEER FOR SPECIFIC ATTACHMENT HEIGHT FOR NCDOT SIGNAL COMMUNICATION CABLE.



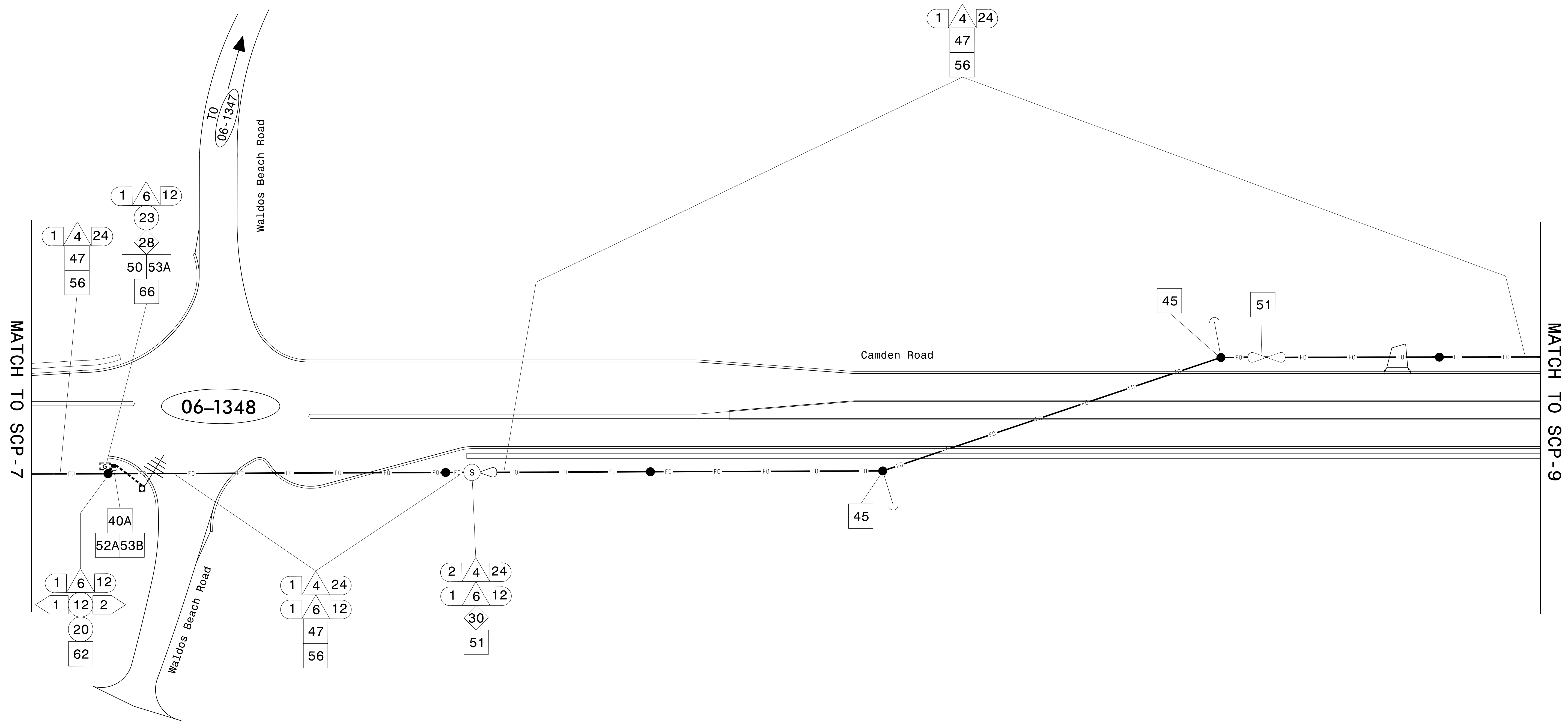
FINAL



<b>Camden Road CLS Cable Routing Plans</b>	
Division 6	Cumberland County Hope Mills
PLAN DATE: August 2024	REVIEWED BY: LM Moon
PREPARED BY: JA Wendt/DJW	DRMP PROJ. NO.: 2400555
REVISIONS	INIT. DATE

DOCUMENT NOT CONSIDERED FINAL UNLESS ALL SIGNATURES COMPLETED

SEAL	
Lisa Moon	10/3/2024
	DATE



- PROJECT NOTES (FIBER):**
1. THE WIRELESS CLOSED LOOP SYSTEM SHALL BE MAINTAINED.
  2. FIBER OPTIC CABLE EQUIPMENT AS SHOWN ON PLANS SHALL BE INSTALLED FOR FUTURE USE.
  3. ALL FIBER OPTIC EQUIPMENT SHOWN SHALL BE INSTALLED, BUT NO SPLICING WILL BE PERFORMED. COIL AND CAP ALL FIBER OPTIC CABLES AT ENDS. SPLICING WILL BE DONE BY OTHERS.
  4. FIBER OPTIC CABLE SHALL BE TESTED AFTER INSTALLATION TO ENSURE FUTURE COMMUNICATIONS ALONG ROUTE.
  5. INSTALL 200' OF SLACK FO CABLE AT THIS LOCATION.

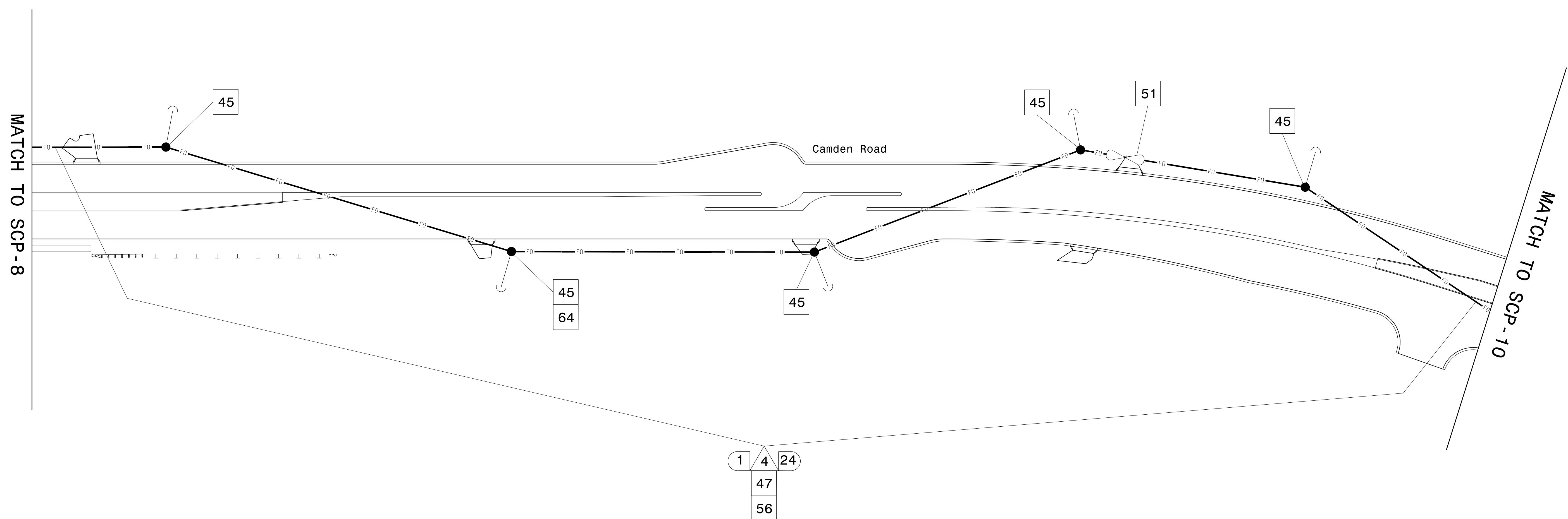
- FIBER INSTALLATION NOTES:**
- 1) CONTACT ENGINEER FOR SPECIFIC ATTACHMENT HEIGHT FOR NCDOT SIGNAL COMMUNICATION CABLE.



<p>FINAL</p> <p>750 N. Greenfield Place, Garner, NC 27529</p>	<p>Camden Road CLS Cable Routing Plans</p>		<p>SEAL</p> <p>Lisa Moon 10/3/2024</p>				
	<p>Division 6 Cumberland County Hope Mills</p> <p>PLAN DATE: August 2024 REVIEWED BY: LM Moon</p> <p>PREPARED BY: JA Wentt/DJW DRMP PROJ. NO.: 2400555</p> <table border="1"> <thead> <tr> <th>REVISIONS</th> <th>INIT.</th> <th>DATE</th> </tr> </thead> <tbody> <tr> <td> </td> <td> </td> <td> </td> </tr> </tbody> </table>			REVISIONS	INIT.	DATE	
REVISIONS	INIT.	DATE					

DOCUMENT NOT CONSIDERED FINAL UNLESS ALL SIGNATURES COMPLETED





**PROJECT NOTES (FIBER):**

1. THE WIRELESS CLOSED LOOP SYSTEM SHALL BE MAINTAINED.
2. FIBER OPTIC CABLE EQUIPMENT AS SHOWN ON PLANS SHALL BE INSTALLED FOR FUTURE USE.
3. ALL FIBER OPTIC EQUIPMENT SHOWN SHALL BE INSTALLED, BUT NO SPLICING WILL BE PERFORMED. COIL AND CAP ALL FIBER OPTIC CABLES AT ENDS. SPLICING WILL BE DONE BY OTHERS.
4. FIBER OPTIC CABLE SHALL BE TESTED AFTER INSTALLATION TO ENSURE FUTURE COMMUNICATIONS ALONG ROUTE.
5. INSTALL 200' OF SLACK FO CABLE AT THIS LOCATION.

**FIBER INSTALLATION NOTES:**

- 1) CONTACT ENGINEER FOR SPECIFIC ATTACHMENT HEIGHT FOR NCDOT SIGNAL COMMUNICATION CABLE.

Plans Prepared By:

**DRMP**  
 DRMP, Inc.  
 8210 University Executives Park Drive, Suite 220  
 Charlotte, NC 28262  
 NC License No. F-1524 (7/04) 332-2289  
 www.DRMP.com

FINAL

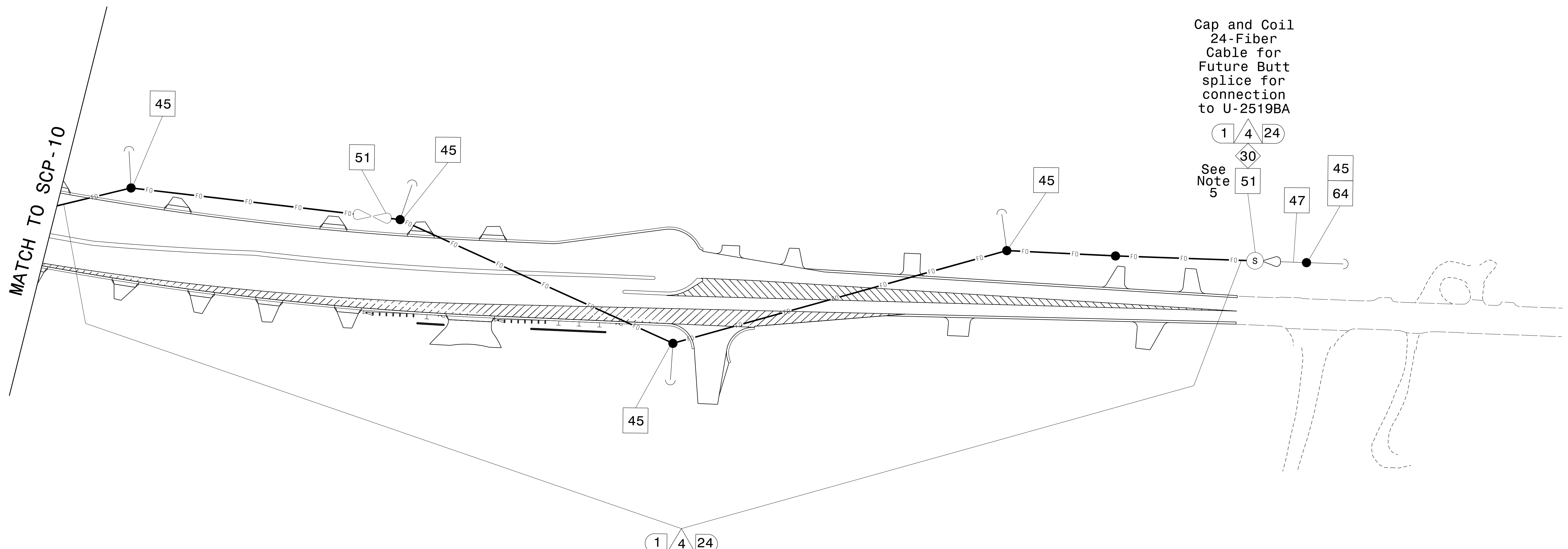
<b>Camden Road CLS Cable Routing Plans</b>	
Division 6	Cumberland County Hope Mills
PLAN DATE: August 2024	REVIEWED BY: LM Moon
PREPARED BY: JA Wendt/DJW	DRMP PROJ. NO.: 2400555
REVISIONS	INIT. DATE

DOCUMENT NOT CONSIDERED FINAL UNLESS ALL SIGNATURES COMPLETED

SEAL

Lisa Moon 10/3/2024  
DATE



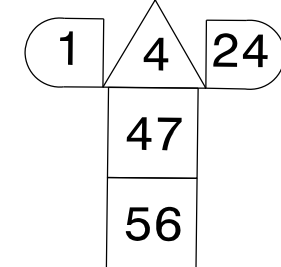


**PROJECT NOTES (FIBER):**

1. THE WIRELESS CLOSED LOOP SYSTEM SHALL BE MAINTAINED.
2. FIBER OPTIC CABLE EQUIPMENT AS SHOWN ON PLANS SHALL BE INSTALLED FOR FUTURE USE.
3. ALL FIBER OPTIC EQUIPMENT SHOWN SHALL BE INSTALLED, BUT NO SPLICING WILL BE PERFORMED. COIL AND CAP ALL FIBER OPTIC CABLES AT ENDS. SPLICING WILL BE DONE BY OTHERS.
4. FIBER OPTIC CABLE SHALL BE TESTED AFTER INSTALLATION TO ENSURE FUTURE COMMUNICATIONS ALONG ROUTE.
5. INSTALL 200' OF SLACK FO CABLE AT THIS LOCATION.

**FIBER INSTALLATION NOTES:**

- 1) CONTACT ENGINEER FOR SPECIFIC ATTACHMENT HEIGHT FOR NCDOT SIGNAL COMMUNICATION CABLE.



FINAL

	<p>Camden Road CLS Cable Routing Plans</p>	
	<p>Division 6 Cumberland County Hope Mills</p>	
<p>750 N. Greenfield Pkwy., Garner, NC 27529</p>	<p>Prepared By: JA Wendt/DJW</p>	<p>Reviewed By: LM Moon</p>
<p>SCALE: 0 N/A</p>	<p>DATE: 10/3/2024</p>	<p>DRMP PROJ. NO.: 2400555</p>

DOCUMENT NOT CONSIDERED FINAL UNLESS ALL SIGNATURES COMPLETED