

5/28/99

SCALE: 1"=50' (HORZ.)
1"=10' (VERT.)

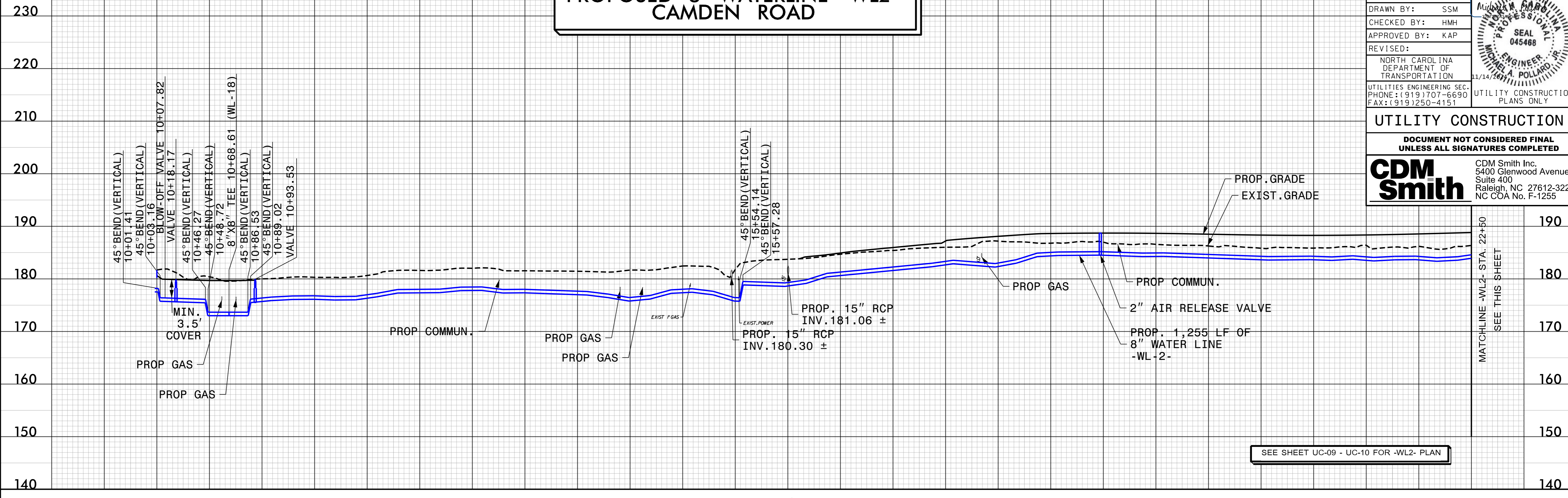
PROPOSED 8" WATERLINE -WL2- CAMDEN ROAD

PROJECT REFERENCE NO.	U-3422	SHEET NO.	UC-26
DESIGNED BY:	SSM		
DRAWN BY:	SSM		
CHECKED BY:	HMH		
APPROVED BY:	KAP		
REVISED:			
NORTH CAROLINA DEPARTMENT OF TRANSPORTATION		UTILITY CONSTRUCTION PLANS ONLY	
UTILITIES ENGINEERING SEC. PHONE: (919) 707-6690 FAX: (919) 250-4151			

UTILITY CONSTRUCTION

DOCUMENT NOT CONSIDERED FINAL UNLESS ALL SIGNATURES COMPLETED

CDM Smith
CDM Smith Inc.
5400 Glenwood Avenue
Suite 400
Raleigh, NC 27612-3228
NC COA No. F-1255

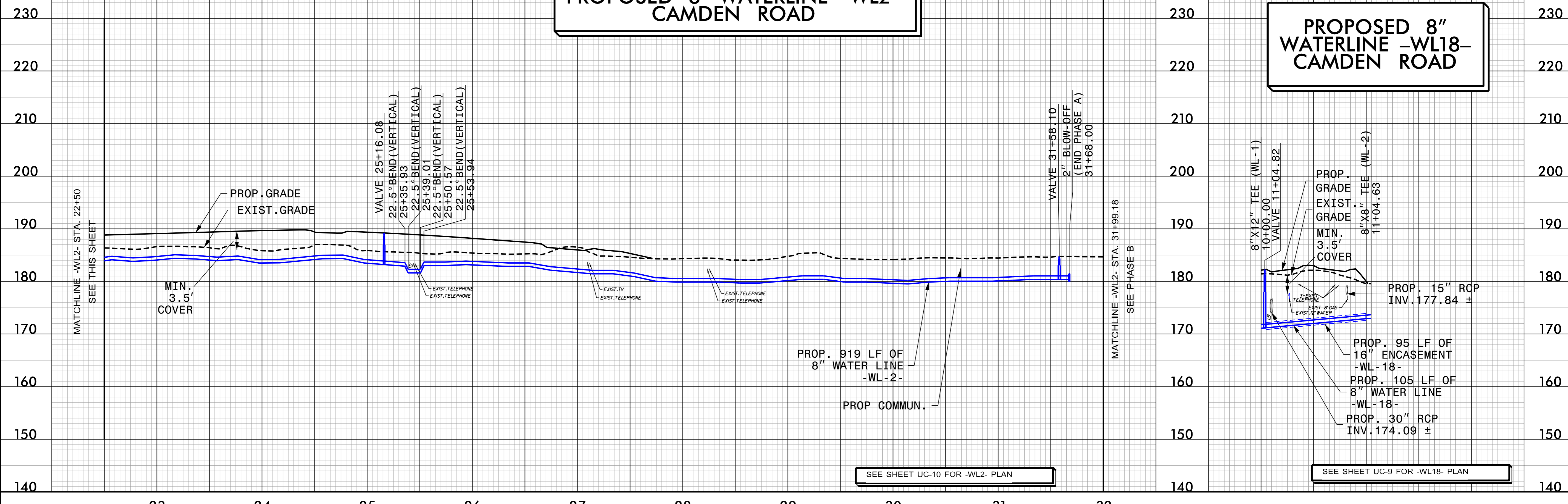


SEE SHEET UC-09 - UC-10 FOR -WL2- PLAN

SCALE: 1"=50' (HORZ.)
1"=10' (VERT.)

PROPOSED 8" WATERLINE -WL2- CAMDEN ROAD

PROPOSED 8" WATERLINE -WL18- CAMDEN ROAD



SEE SHEET UC-10 FOR -WL2- PLAN

SEE SHEET UC-9 FOR -WL18- PLAN

-SYTIME: A:\10422-Ut_ucput26.dgn
11:58:38 PM 5/28/99