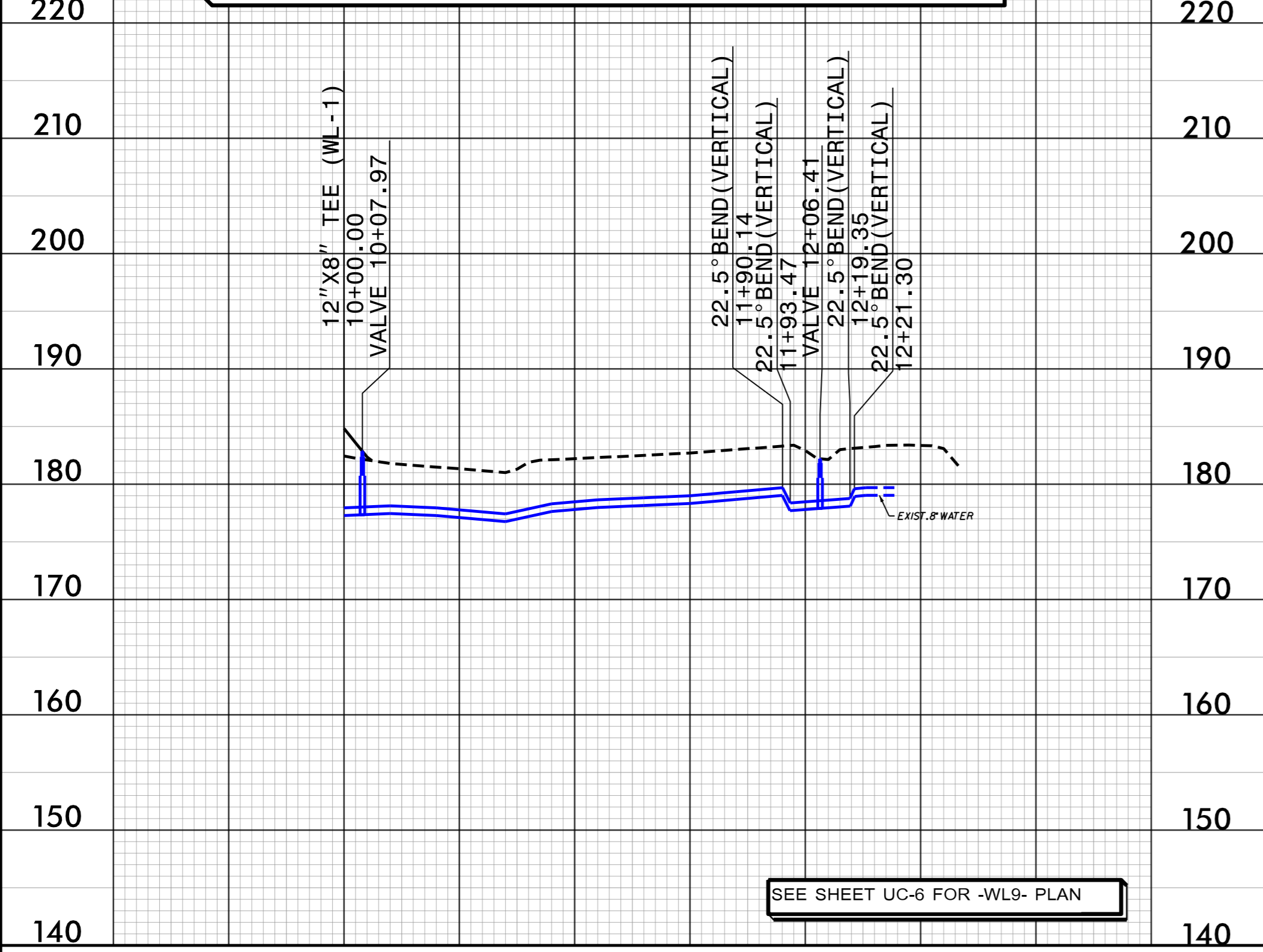


5/28/99

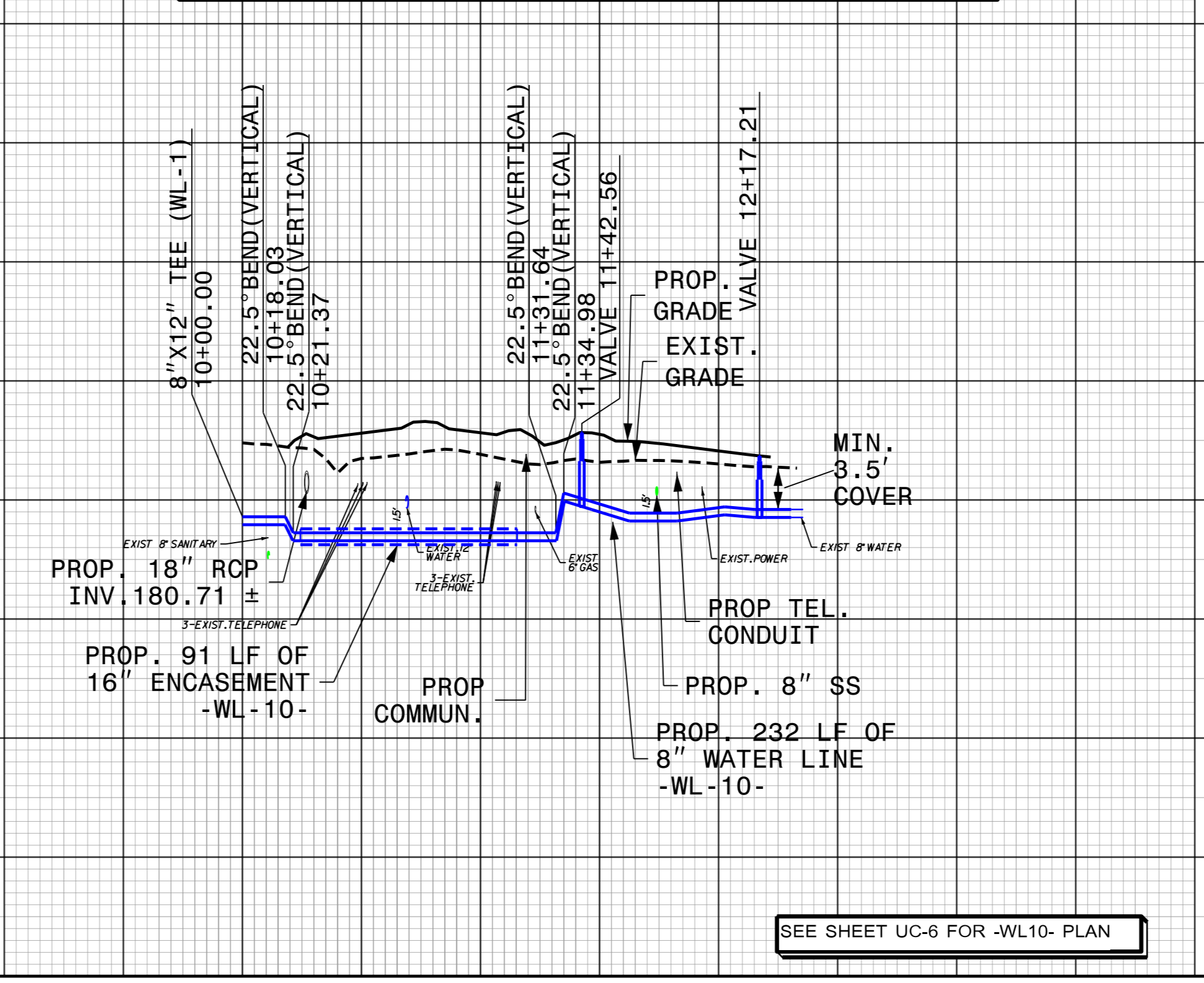
SCALE: 1"=50' (HORZ.)  
1"=10' (VERT.)

### PROPOSED 8" WATERLINE -WL9- CAMDEN ROAD



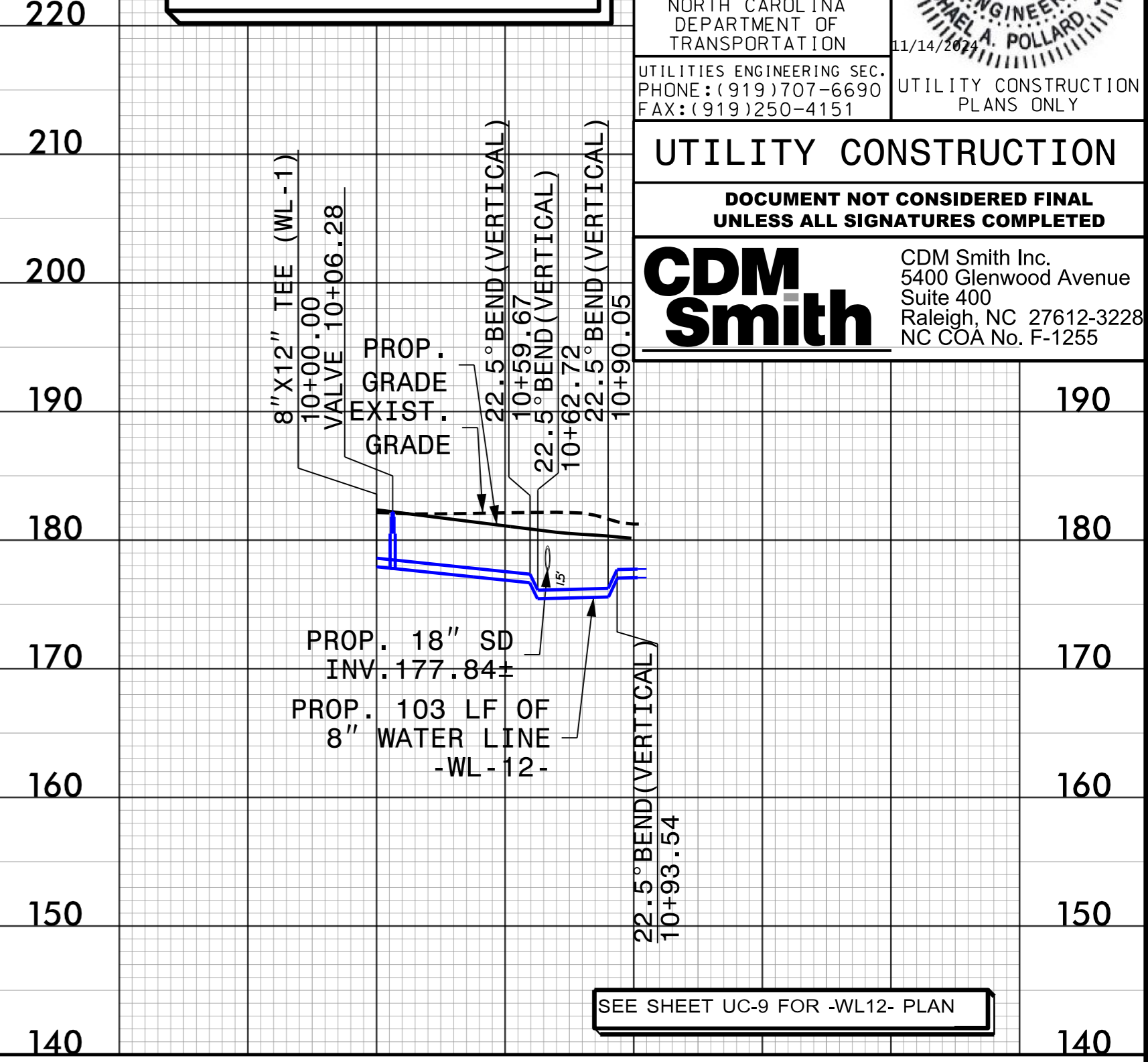
SEE SHEET UC-6 FOR -WL9- PLAN

### PROPOSED 8" WATERLINE -WL10- CAMDEN ROAD



SEE SHEET UC-6 FOR -WL10- PLAN

### PROPOSED 8" WATERLINE -WL12- CAMDEN ROAD



SEE SHEET UC-9 FOR -WL12- PLAN

PROJECT REFERENCE NO. U-3422 SHEET NO. UC-25

DESIGNED BY: SSM  
DRAWN BY: SSM  
CHECKED BY: HMH  
APPROVED BY: MAP  
REVISED:

NORTH CAROLINA DEPARTMENT OF TRANSPORTATION

UTILITIES ENGINEERING SEC. PHONE: (919) 707-6690 FAX: (919) 250-4151

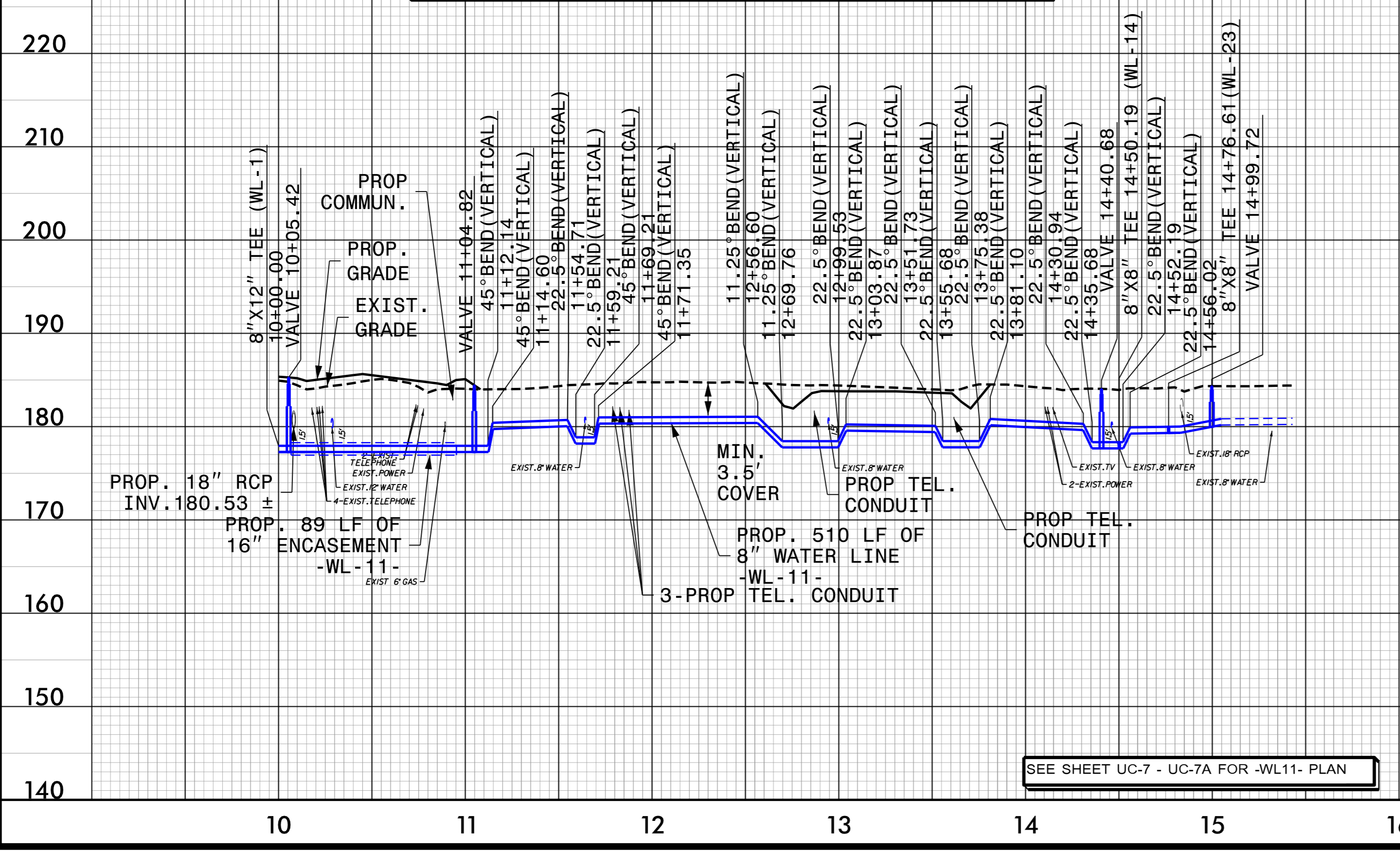
UTILITY CONSTRUCTION PLANS ONLY

CDM Smith Inc. 5400 Glenwood Avenue Suite 400 Raleigh, NC 27612-3228 NC COA No. F-1255

DOCUMENT NOT CONSIDERED FINAL UNLESS ALL SIGNATURES COMPLETED

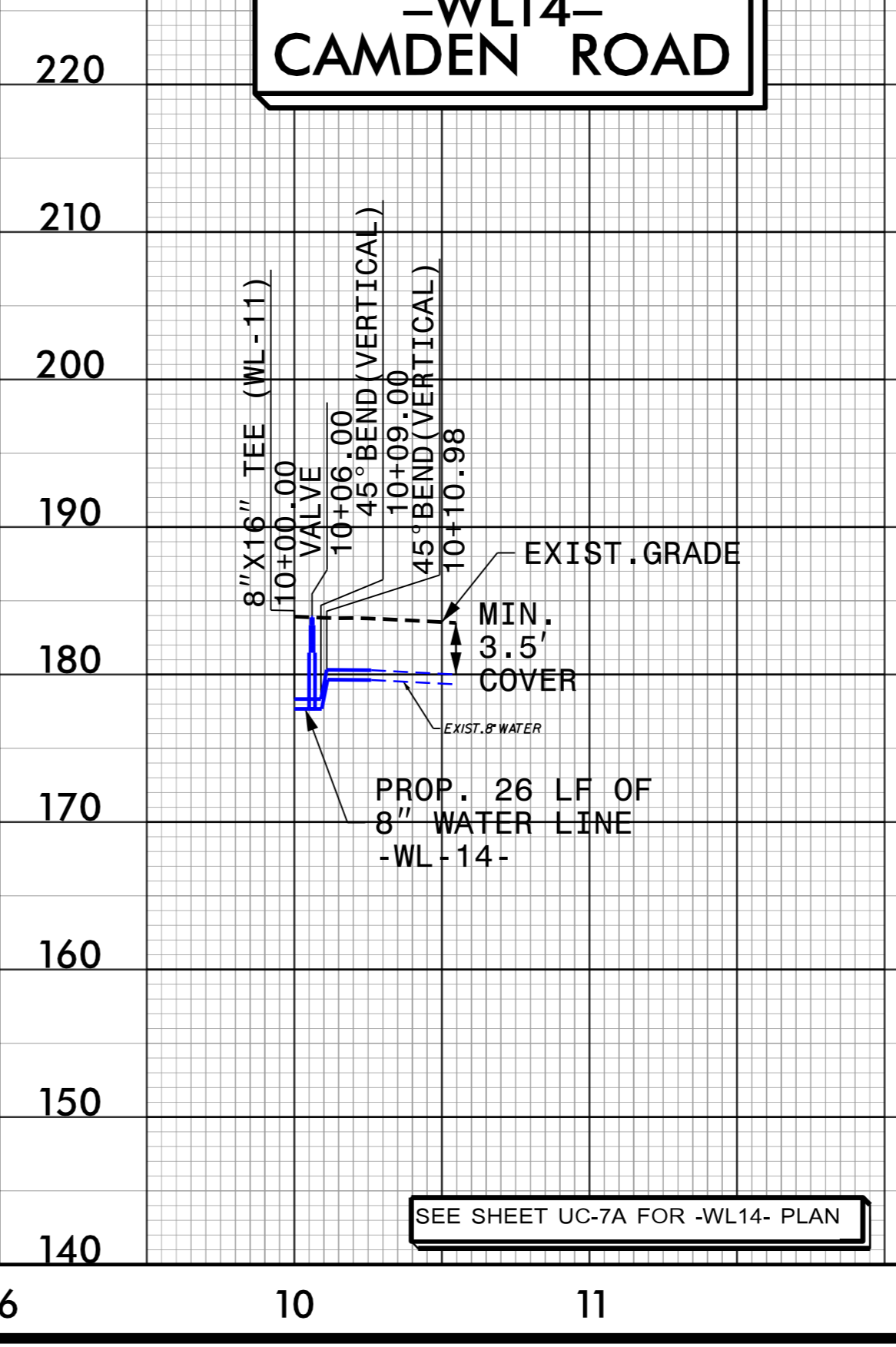
SCALE: 1"=50' (HORZ.)  
1"=10' (VERT.)

### PROPOSED 8" WATERLINE -WL11- CAMDEN ROAD



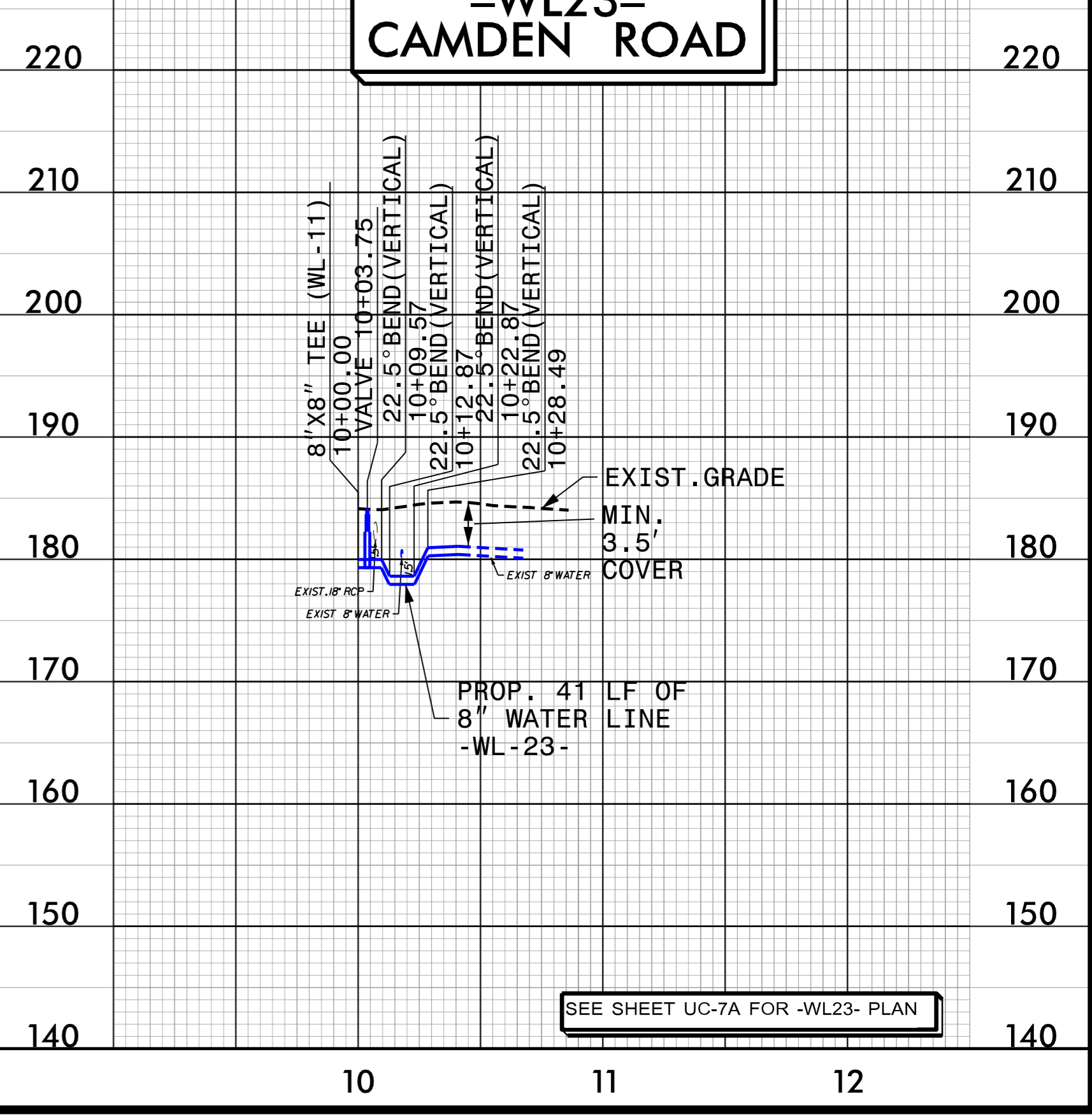
SEE SHEET UC-7 - UC-7A FOR -WL11- PLAN

### PROPOSED 8" WATERLINE -WL14- CAMDEN ROAD



SEE SHEET UC-7A FOR -WL14- PLAN

### PROPOSED 8" WATERLINE -WL23- CAMDEN ROAD



SEE SHEET UC-7A FOR -WL23- PLAN

-SYTIME-AV10422-Ut\_ucput25.dgn  
TUESDAY, FEBRUARY 1, 2000 10:58:58 AM