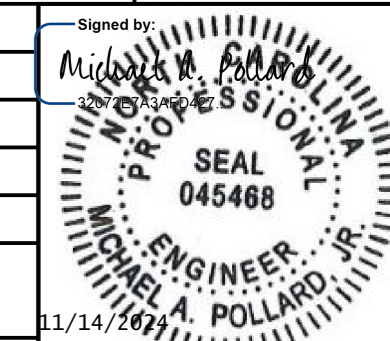


5/28/99

SCALE: 1"=50' (HORZ.)
1"=10' (VERT.)

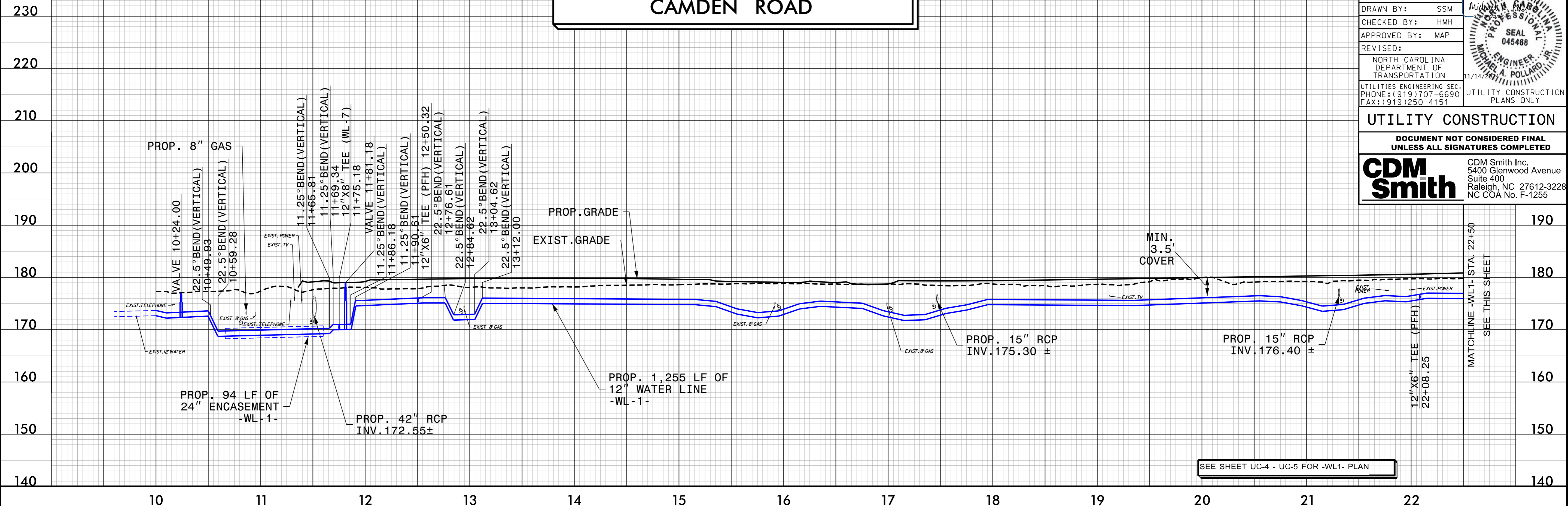
PROPOSED 12" WATERLINE -WL1- CAMDEN ROAD

| | | | |
|--|--------|--|-------|
| PROJECT REFERENCE NO. | U-3422 | SHEET NO. | UC-20 |
| DESIGNED BY: | SSM |  | |
| DRAWN BY: | SSM | | |
| CHECKED BY: | HMH | | |
| APPROVED BY: | MAP | | |
| REVISED: | | | |
| NORTH CAROLINA DEPARTMENT OF TRANSPORTATION | | UTILITY CONSTRUCTION PLANS ONLY | |
| UTILITIES ENGINEERING SEC. PHONE: (919) 707-6690 FAX: (919) 250-4151 | | | |

UTILITY CONSTRUCTION

DOCUMENT NOT CONSIDERED FINAL UNLESS ALL SIGNATURES COMPLETED

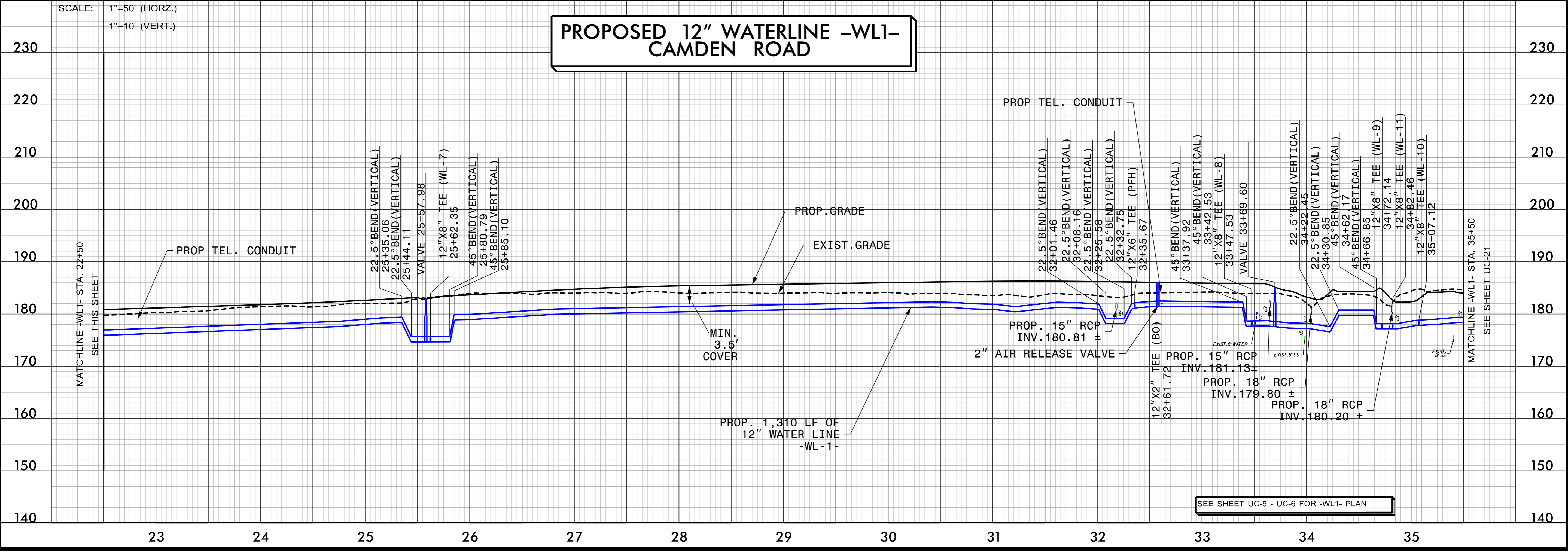
CDM Smith
CDM Smith Inc.
5400 Glenwood Avenue
Suite 400
Raleigh, NC 27612-3228
NC COA No. F-1255



SEE SHEET UC-4 - UC-5 FOR -WL1- PLAN

SCALE: 1"=50' (HORZ.)
1"=10' (VERT.)

PROPOSED 12" WATERLINE -WL1- CAMDEN ROAD



SEE SHEET UC-5 - UC-6 FOR -WL1- PLAN

-SYSTEM- A:\10422-Ut_ucput20.dgn
11:58:30 AM 5/28/99