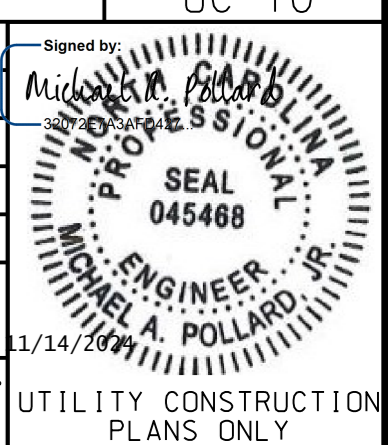
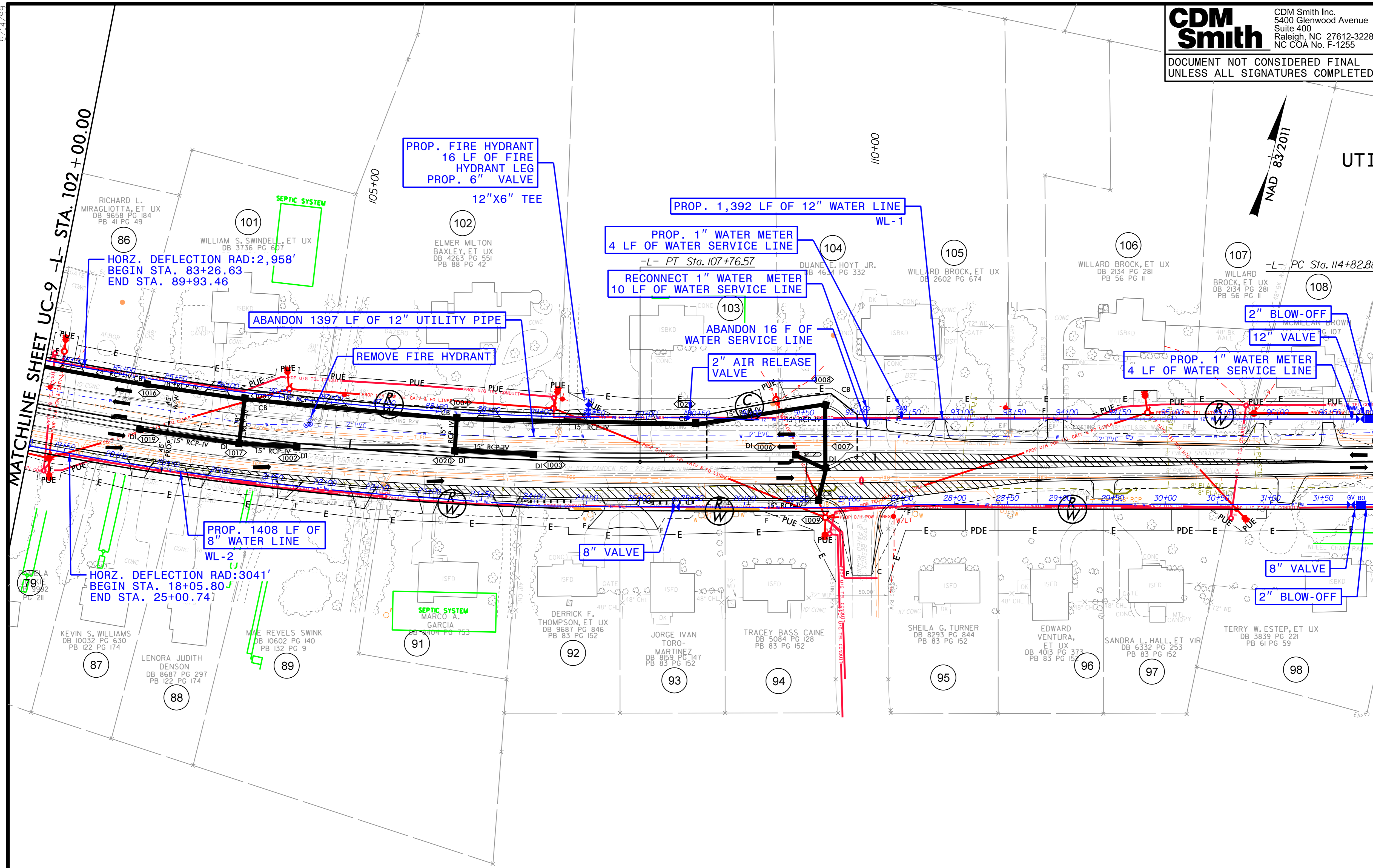
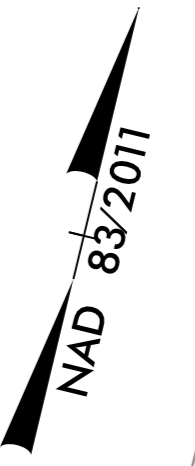


PROJECT REFERENCE NO.	U-3422	SHEET NO.	UC-10
DESIGNED BY:	SSM	CHECKED BY:	HMH
DRAWN BY:	SSM	APPROVED BY:	MAP
REVISER:			
NORTH CAROLINA DEPARTMENT OF TRANSPORTATION		UTILITIES ENGINEERING SEC.	
PHONE: (919) 707-6690		FAX: (919) 250-4151	

DOCUMENT NOT CONSIDERED FINAL
UNLESS ALL SIGNATURES COMPLETED



UTILITY CONSTRUCTION

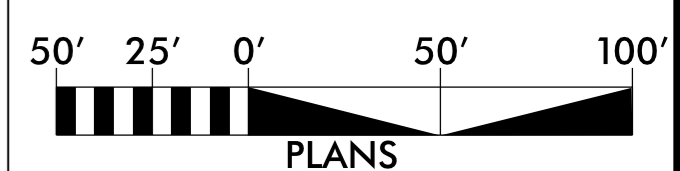


MATCHLINE SHEET UC-9 -L- STA. 102+00.00

MATCHLINE SHEET UC-11 (PHASE B) -L- STA. 114+75

SEE SHEET UC-20 - UC-23 FOR -WL1- PROFILE
SEE SHEET UC-26 FOR -WL2- PROFILE

THE ESTIMATED QUANTITY OF DUCTILE IRON WATER PIPE FITTINGS ON THIS PLAN SHEET IS 2,505 POUNDS. THE ACTUAL QUANTITY AND TYPE OF FITTINGS WILL VARY BASED ON FIELD CONDITIONS.



SYSTEM: uc_10.dwg UC10_psh.dgn
USER: map