

5/14/2011

CDM Smith
 CDM Smith Inc.
 5400 Glenwood Avenue
 Suite 400
 Raleigh, NC 27612-3228
 NC COA No. F-1255

PROJECT REFERENCE NO. U-3422
 SHEET NO. UC-9

DESIGNED BY: SSM
 DRAWN BY: SSM
 CHECKED BY: HMH
 APPROVED BY: MAP

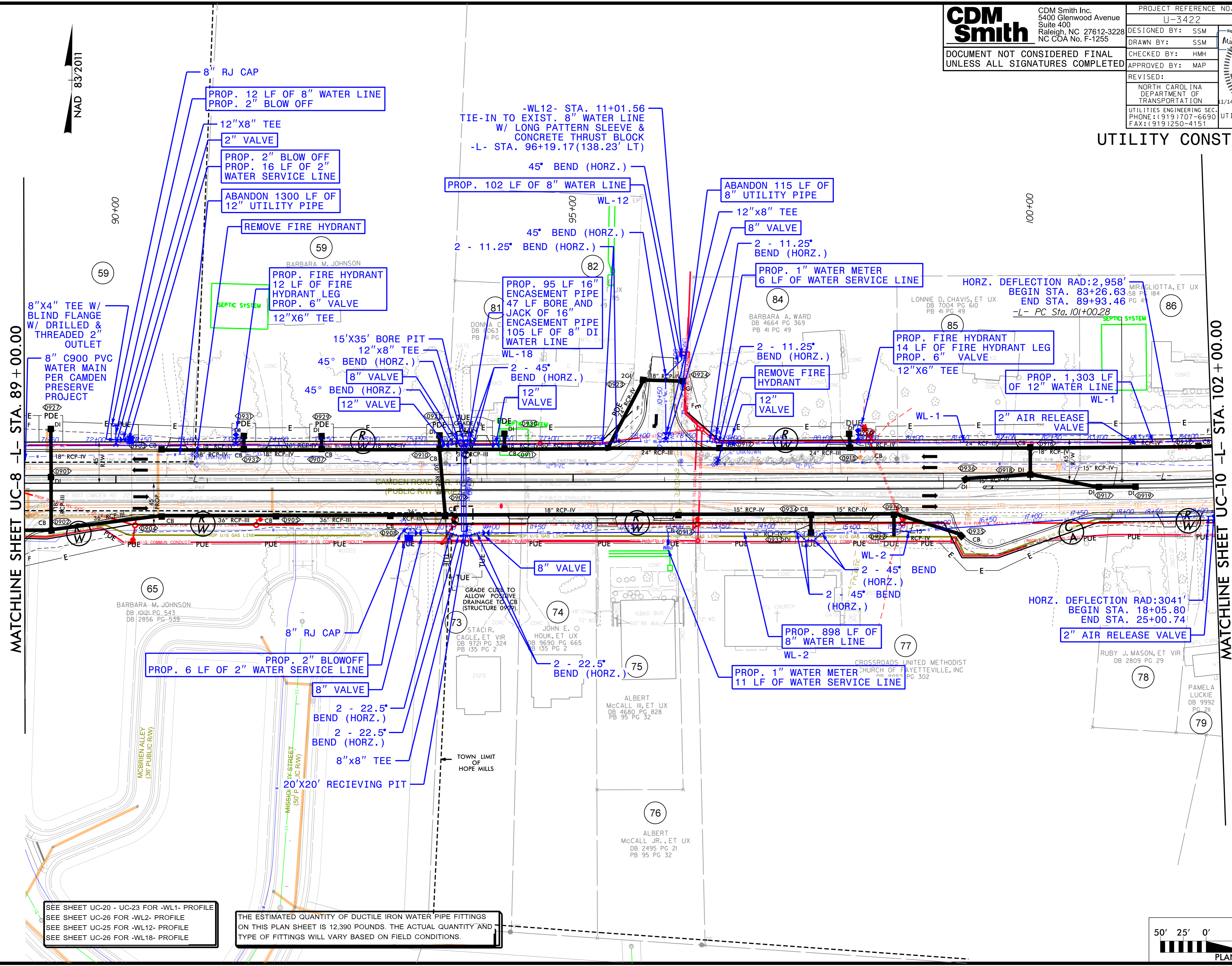
DOCUMENT NOT CONSIDERED FINAL
 UNLESS ALL SIGNATURES COMPLETED

REVISIONS:
 NORTH CAROLINA
 DEPARTMENT OF
 TRANSPORTATION
 1/14/2011

UTILITIES ENGINEERING SEC.
 PHONE: (919) 707-6690
 FAX: (919) 250-4151

UTILITY CONSTRUCTION
 PLANS ONLY

SEAL
 045468
 MICHAEL A. POLLARD JR.
 ENGINEER



UTILITY CONSTRUCTION

MATCHLINE SHEET UC-8 -L- STA. 89+00.00

MATCHLINE SHEET UC-10 -L- STA. 102+00.00

SEE SHEET UC-20 - UC-23 FOR WL-1- PROFILE
 SEE SHEET UC-26 FOR WL-2- PROFILE
 SEE SHEET UC-25 FOR WL-12- PROFILE
 SEE SHEET UC-26 FOR WL-18- PROFILE

THE ESTIMATED QUANTITY OF DUCTILE IRON WATER PIPE FITTINGS ON THIS PLAN SHEET IS 12,390 POUNDS. THE ACTUAL QUANTITY AND TYPE OF FITTINGS WILL VARY BASED ON FIELD CONDITIONS.

