

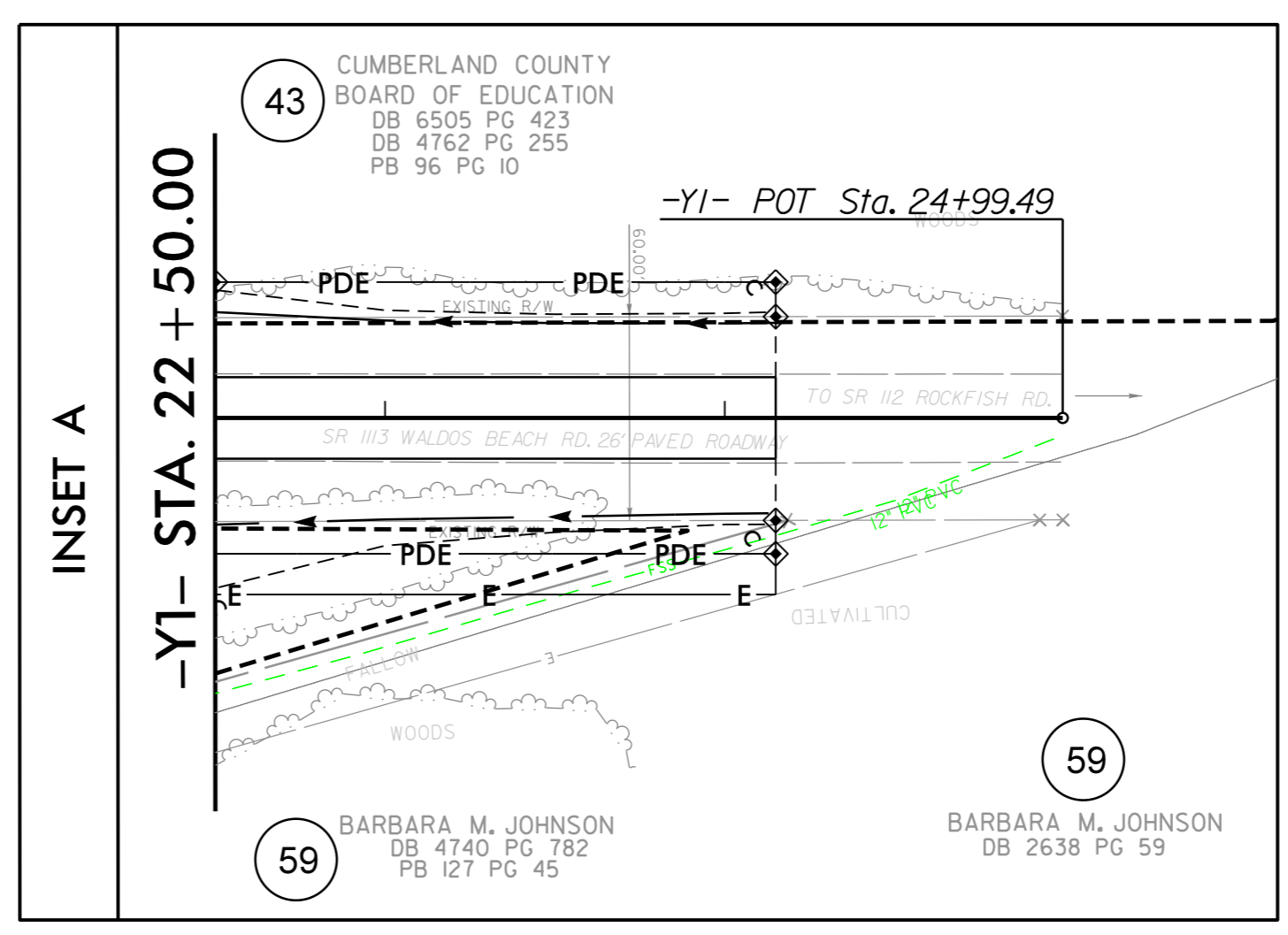
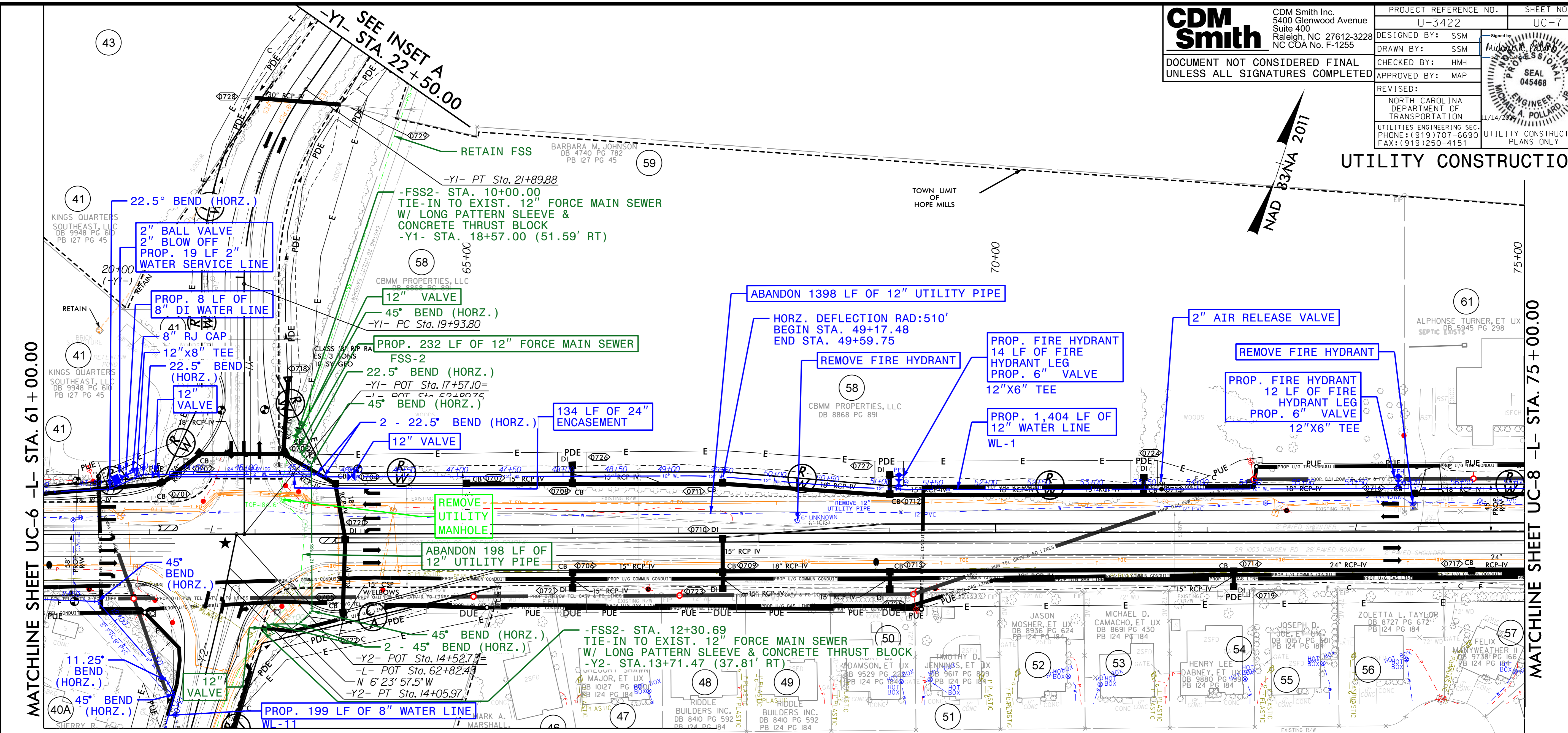


CDM Smith Inc.
5400 Glenwood Avenue
Suite 400
Raleigh, NC 27612-3228
NC COA No. F-1255

PROJECT REFERENCE NO.	U-3422	SHEET NO.	UC-7
DESIGNED BY:	SSM		
DRAWN BY:	SSM		
CHECKED BY:	HMH		
APPROVED BY:	MAP		
REVISED:			
NORTH CAROLINA DEPARTMENT OF TRANSPORTATION		UTILITY CONSTRUCTION PLANS ONLY	
UTILITIES ENGINEERING SEC. PHONE: (919) 707-6690 FAX: (919) 250-4151			

DOCUMENT NOT CONSIDERED FINAL UNLESS ALL SIGNATURES COMPLETED

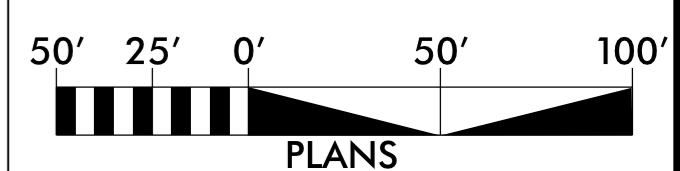
UTILITY CONSTRUCTION



THE ESTIMATED QUANTITY OF DUCTILE IRON WATER PIPE FITTINGS ON THIS PLAN SHEET IS 6,429 POUNDS. THE ACTUAL QUANTITY AND TYPE OF FITTINGS WILL VARY BASED ON FIELD CONDITIONS.

THE ESTIMATED QUANTITY OF DUCTILE IRON SEWER PIPE FITTINGS ON THIS PLAN SHEET IS 3,035 POUNDS. THE ACTUAL QUANTITY AND TYPE OF FITTINGS WILL VARY BASED ON FIELD CONDITIONS.

SEE SHEET UC-20 - UC-23 FOR -WL1- PROFILE
SEE SHEET UC-25 FOR -WL11- PROFILE
SEE SHEET UC-27 FOR -FSS2- PROFILE



SYSTEM: TIA-rdy7_UC07_psh.dgn
 USER: WJZ