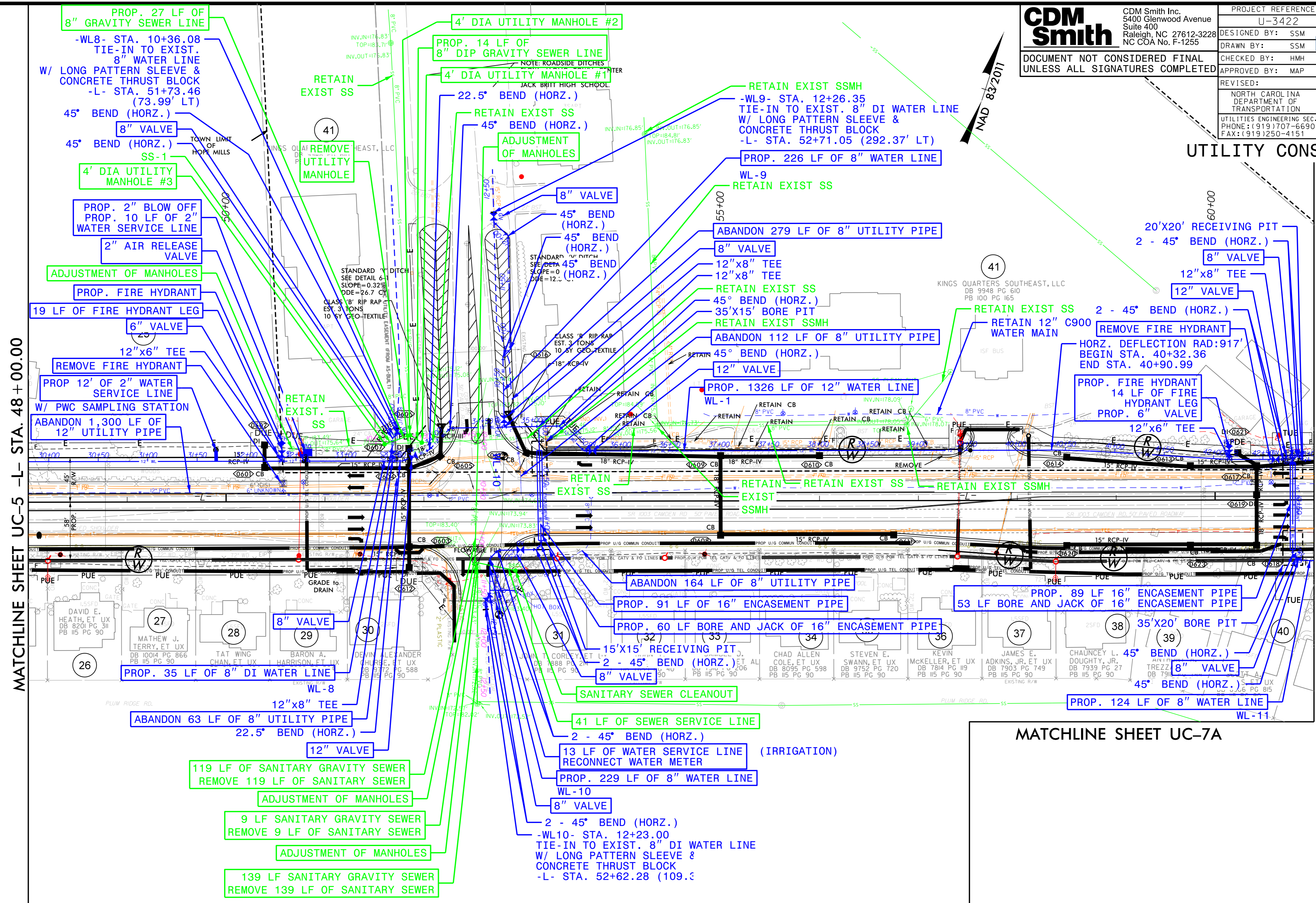


5/14/19



CDM Smith Inc. 5400 Glenwood Avenue Suite 400 Raleigh, NC 27612-3228 NC COA No. F-1255	PROJECT REFERENCE NO.	U-3422	SHEET NO.	UC-6
	DESIGNED BY:	SSM		
	DRAWN BY:	SSM		
	CHECKED BY:	HMH		
DOCUMENT NOT CONSIDERED FINAL UNLESS ALL SIGNATURES COMPLETED		APPROVED BY:	MAP	
		REVISED:		
		NORTH CAROLINA DEPARTMENT OF TRANSPORTATION UTILITIES ENGINEERING SECTION PHONE: (919) 707-6690 FAX: (919) 250-4151		

UTILITY CONSTRUCTION



MATCHLINE SHEET UC-5 -L- STA. 48+00.00

MATCHLINE SHEET UC-7 -L- STA. 61+00.00

MATCHLINE SHEET UC-7A

SEE SHEET UC-20 - UC-23 FOR -WL1- PROFILE  
 SEE SHEET UC-24 FOR -WL8- PROFILE  
 SEE SHEET UC-25 FOR -WL9- PROFILE  
 SEE SHEET UC-25 FOR -WL10- PROFILE  
 SEE SHEET UC-25 FOR -WL11- PROFILE  
 SEE SHEET UC-39 FOR -SS1- PROFILE

THE ESTIMATED QUANTITY OF DUCTILE IRON WATER PIPE FITTINGS ON THIS PLAN SHEET IS 11,248 POUNDS. THE ACTUAL QUANTITY AND TYPE OF FITTINGS WILL VARY BASED ON FIELD CONDITIONS.

