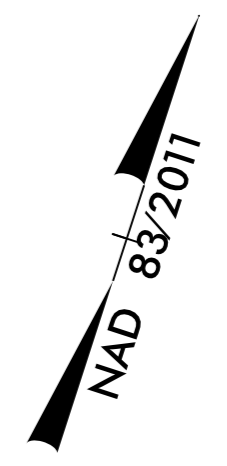




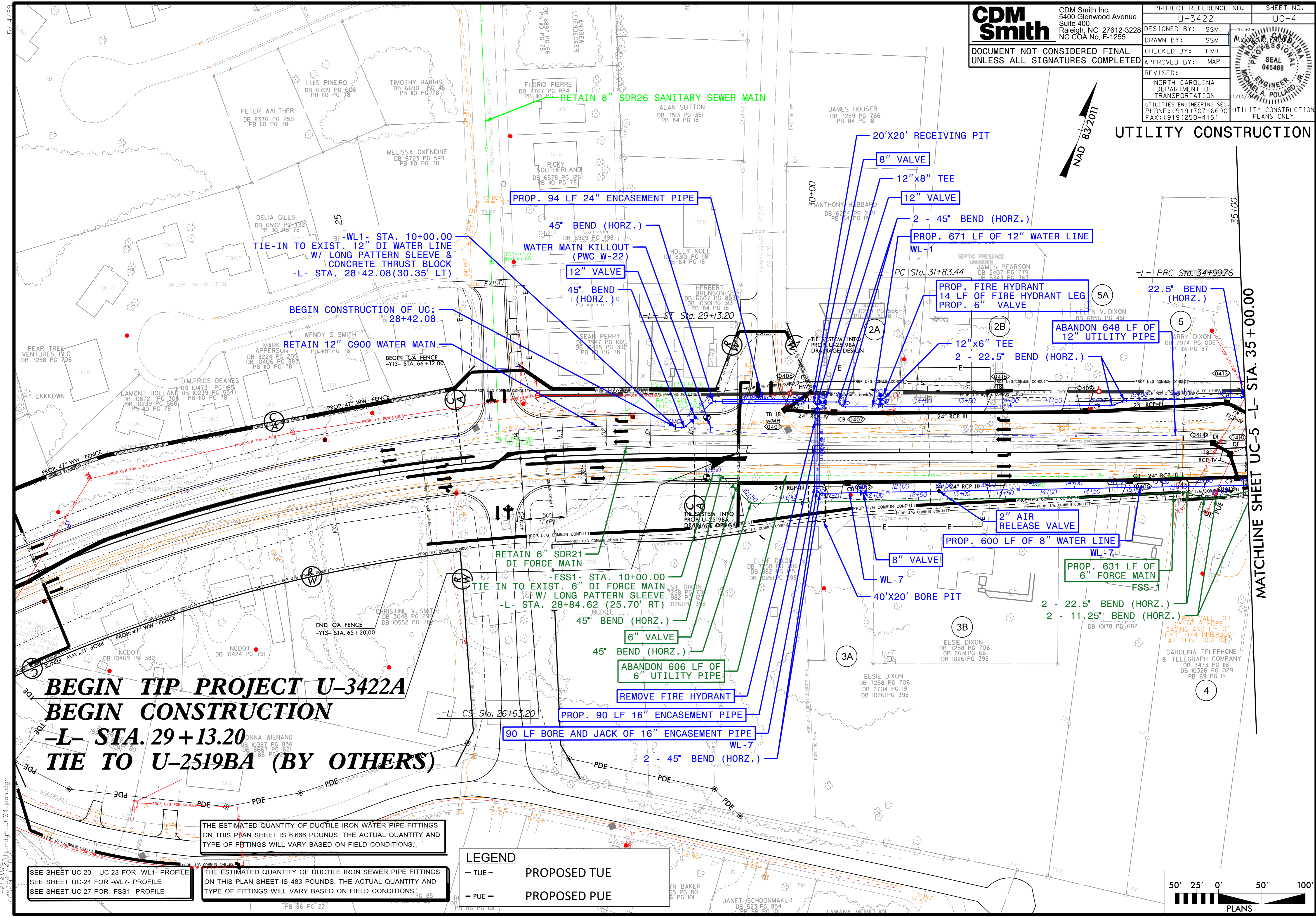
CDM Smith Inc.
5400 Glenwood Avenue
Suite 400
Raleigh, NC 27612-3228
NC COA No. F-1255

PROJECT REFERENCE NO.	U-3422	SHEET NO.	UC-4
DESIGNED BY:	SSM		
DRAWN BY:	SSM		
CHECKED BY:	HMH		
APPROVED BY:	MAP		
REVISIONS:			
NORTH CAROLINA DEPARTMENT OF TRANSPORTATION		UTILITY CONSTRUCTION PLANS ONLY	
UTILITIES ENGINEERING SEC. PHONE: (919) 707-6690 FAX: (919) 250-4151			

DOCUMENT NOT CONSIDERED FINAL UNLESS ALL SIGNATURES COMPLETED



UTILITY CONSTRUCTION



BEGIN TIP PROJECT U-3422A
BEGIN CONSTRUCTION
-L- STA. 29+13.20
TIE TO U-2519BA (BY OTHERS)

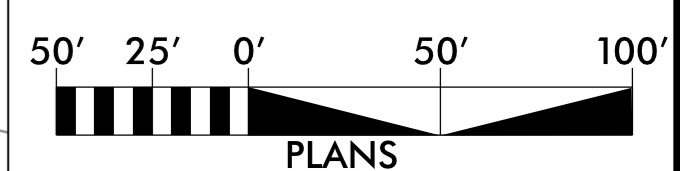
THE ESTIMATED QUANTITY OF DUCTILE IRON WATER PIPE FITTINGS ON THIS PLAN SHEET IS 6,666 POUNDS. THE ACTUAL QUANTITY AND TYPE OF FITTINGS WILL VARY BASED ON FIELD CONDITIONS.

THE ESTIMATED QUANTITY OF DUCTILE IRON SEWER PIPE FITTINGS ON THIS PLAN SHEET IS 483 POUNDS. THE ACTUAL QUANTITY AND TYPE OF FITTINGS WILL VARY BASED ON FIELD CONDITIONS.

LEGEND

- TUE -	PROPOSED TUE
- PUE -	PROPOSED PUE

SEE SHEET UC-20 - UC-23 FOR -WL1- PROFILE
 SEE SHEET UC-24 FOR -WL7- PROFILE
 SEE SHEET UC-27 FOR -FSS1- PROFILE



MATCHLINE SHEET UC-5 -L- STA. 35+00.00