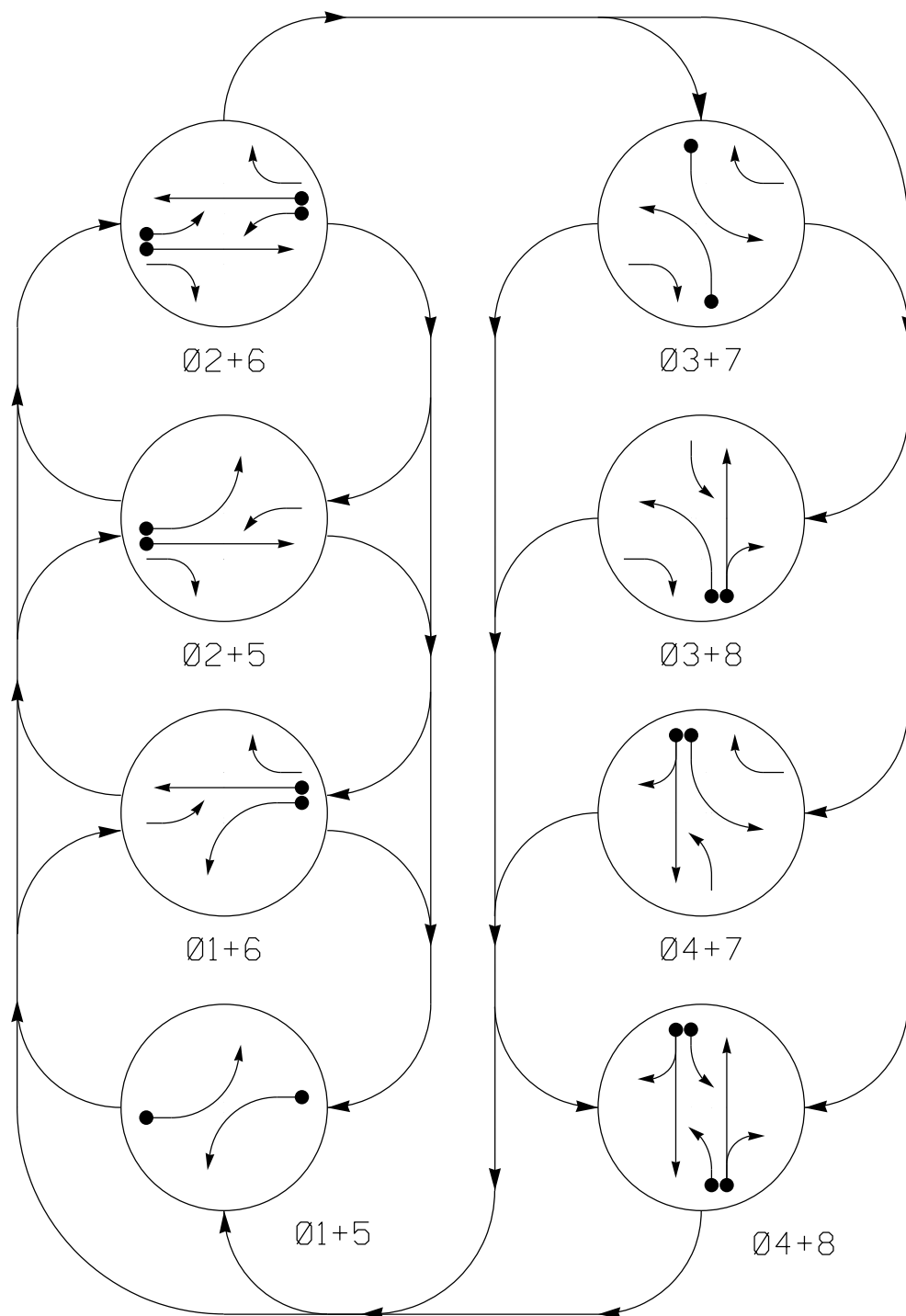


DEFAULT PHASING DIAGRAM



PHASING DIAGRAM DETECTION LEGEND

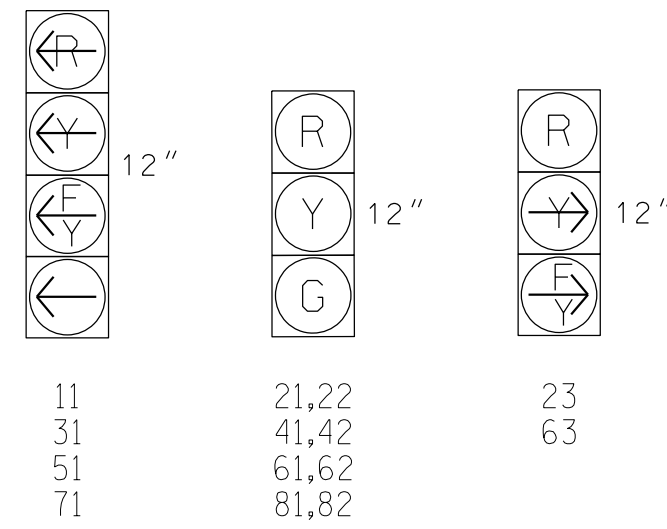
- DETECTED MOVEMENT
UNDETECTED MOVEMENT (OVERLAP)
UNSIGNALIZED MOVEMENT
PEDESTRIAN MOVEMENT

DEFAULT PHASING TABLE OF OPERATION

Table with columns: SIGNAL FACE, PHASE (01, 02, 03, 04), and FLASH. Rows list signal faces and their corresponding phase configurations.

SIGNAL FACE I.D.

All Heads L.E.D.

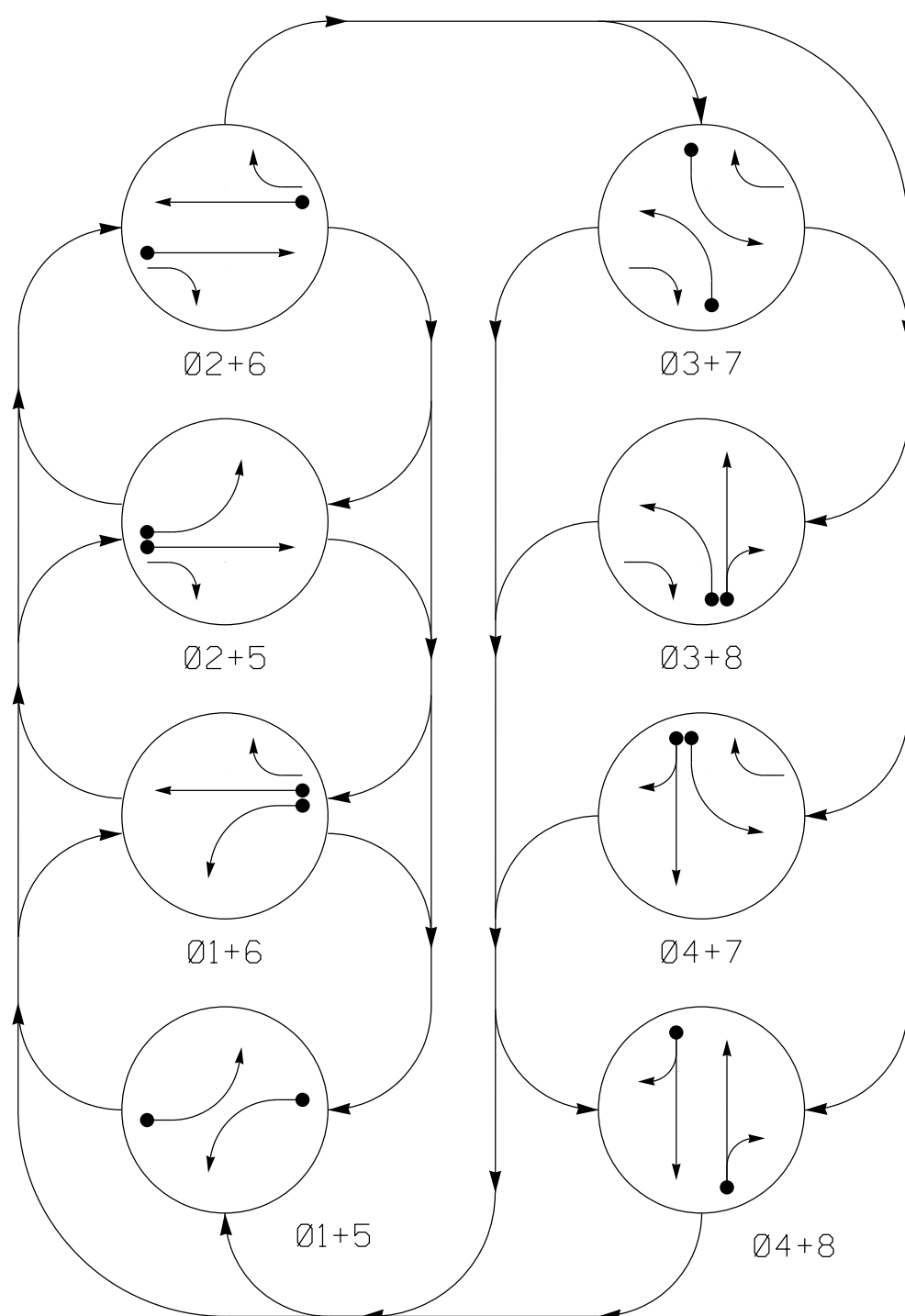


8 Phase Fully Actuated (D06-28_Hope Mills)

NOTES

- 1. Refer to "Roadway Standard Drawings NCDOT" dated January 2024 and "Standard Specifications for Roads and Structures" dated January 2024.
2. Do not program signal for late night flashing operation unless otherwise directed by the Engineer.
3. Phase 1 and/or phase 5 may be lagged.
4. Phase 3 and/or phase 7 may be lagged.
5. Set all detector units to presence mode.
6. The Division Traffic Engineer will determine the hours of use for each phasing plan.
7. This intersection uses multi-zone microwave detection. Install detectors according to the manufacturer's instructions to achieve desired detection.
8. See traffic control plans for stop line locations.
9. Maximum times shown in timing chart are for free-run operation only. Coordinated signal system timing values supersede these values.

ALTERNATE PHASING DIAGRAM



PHASING DIAGRAM DETECTION LEGEND

- DETECTED MOVEMENT
UNDETECTED MOVEMENT (OVERLAP)
UNSIGNALIZED MOVEMENT
PEDESTRIAN MOVEMENT

ALTERNATE PHASING TABLE OF OPERATION

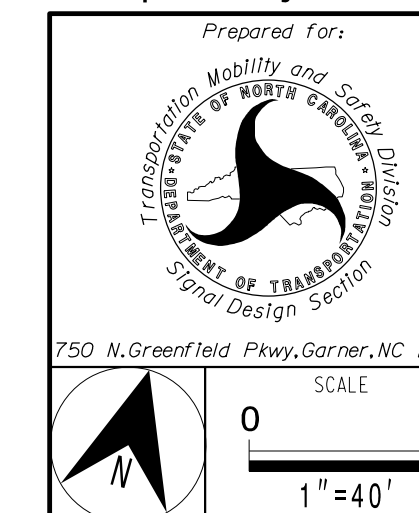
Table with columns: SIGNAL FACE, PHASE (01, 02, 03, 04), and FLASH. Rows list signal faces and their corresponding phase configurations.

Signal Upgrade - Sheet 2 of 2 Temporary Design 2 - (TMP Phase 2)

DOCUMENT NOT CONSIDERED FINAL UNLESS ALL SIGNATURES COMPLETED



DRMP, Inc. 8210 University Executive Park Drive, Suite 220 Charlotte, NC 28262 NC License No. F-1524 (704) 332-2289 www.DRMP.com



Project information table including location (SR 1003, SR 1113, Hope Mills), date (August 2024), and project number (2400555).



Signature and date of Lisa M. Moon: 10/3/2024

SIG. INVENTORY NO. 06-1348T2