

DEFAULT PHASING TABLE OF OPERATION

SIGNAL FACE	PHASE				
	Ø 1+5	Ø 1+6	Ø 2+5	Ø 2+6	Ø 4+8
11	←	←	←	←	←
21,22	R	R	G	G	R
41,42	R	R	R	R	G
51	←	←	←	←	←
61,62	R	G	R	G	R
63	R	←	←	←	R
81,82	R	R	R	R	G

ALTERNATE PHASING TABLE OF OPERATION

SIGNAL FACE	PHASE				
	Ø 1+5	Ø 1+6	Ø 2+5	Ø 2+6	Ø 4+8
11	←	←	←	←	←
21,22	R	R	G	G	R
41,42	R	R	R	R	G
51	←	←	←	←	←
61,62	R	G	R	G	R
63	R	←	←	←	R
81,82	R	R	R	R	G

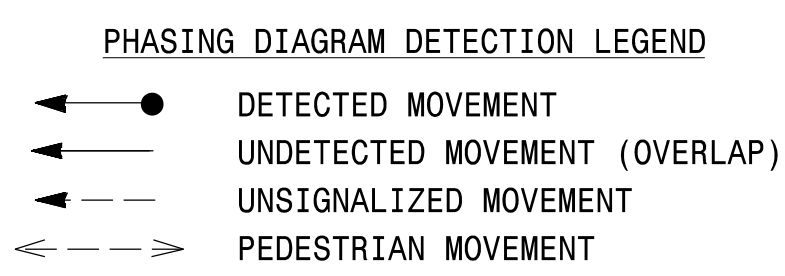
MAXTIME DETECTOR INSTALLATION CHART

ZONE	SIZE (FT)	DISTANCE FROM STOPBAR (FT)	TURNS	PROGRAMMING							
				CALL PHASE	DELAY TIME	EXTEND TIME	EXTEND ADDED INITIAL	CALL	DELAY DURING GREEN	NEW CARD	
1A	6X40	0	@	1	15.0*	-	X	-	X	-	@
4A	6X40	0	@	6#	3.0	-	X	-	X	X	@
5A	6X40	0	@	5	15.0*	-	X	-	X	-	@
8A	6X40	0	@	2#	3.0	-	X	-	X	X	@
8B	6X40	0	@	8	15.0	-	X	-	X	-	@

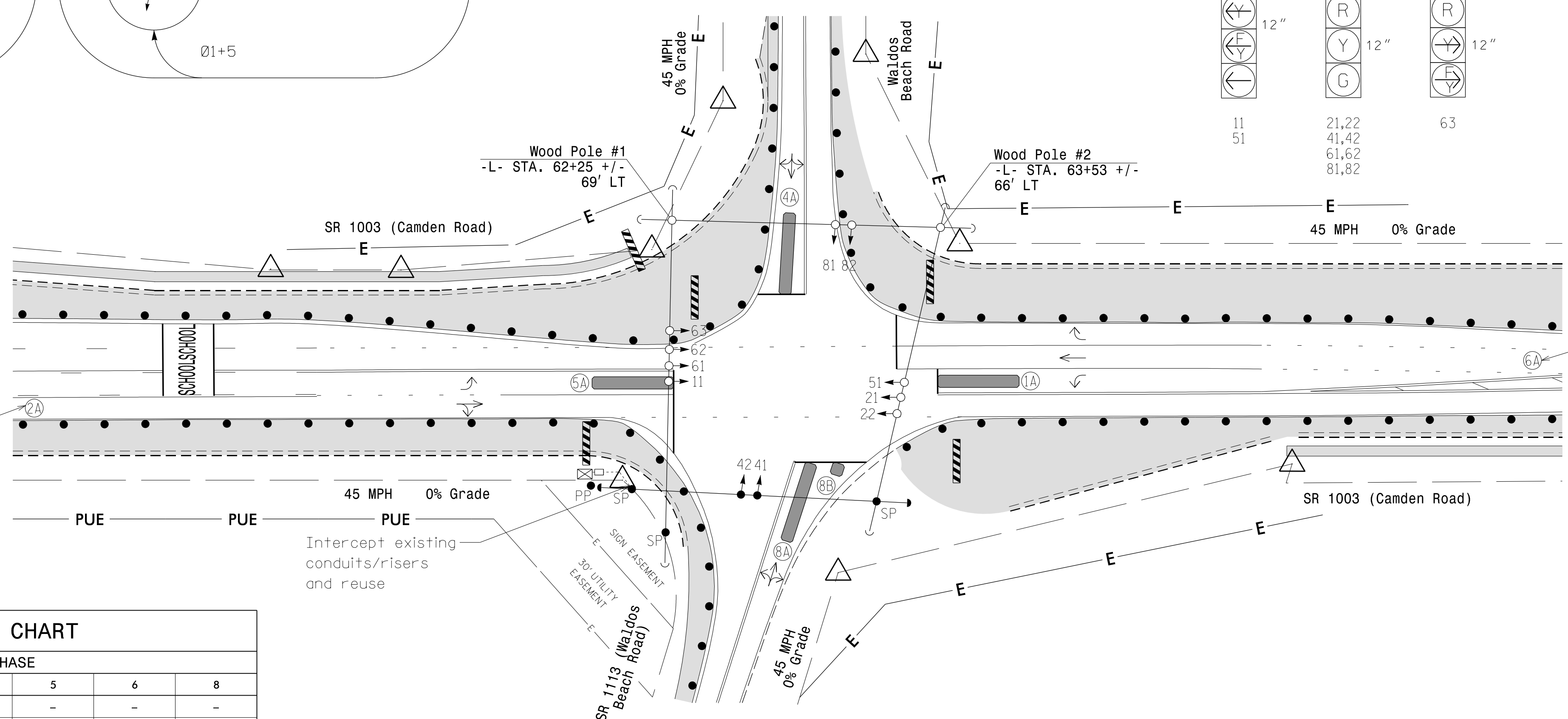
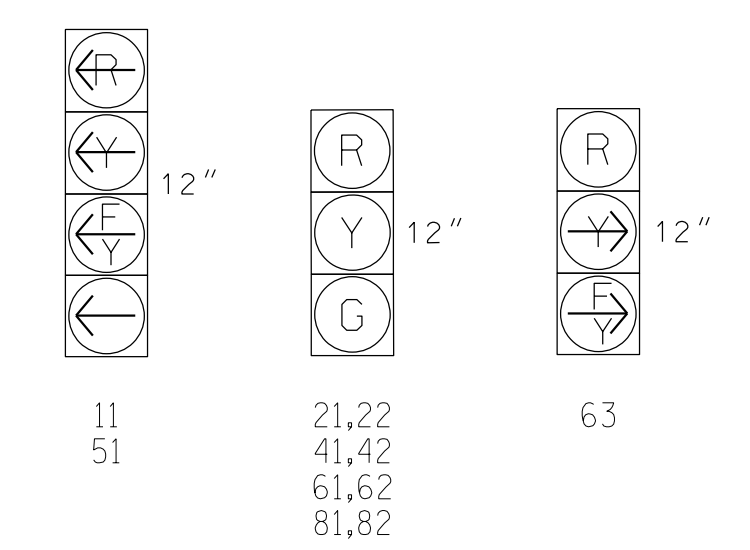
5 Phase Fully Actuated (D06-28_Hope Mills)

NOTES

- Refer to "Roadway Standard Drawings NCDOT" dated January 2024 and "Standard Specifications for Roads and Structures" dated January 2024.
- Do not program signal for late night flashing operation unless otherwise directed by the Engineer.
- Phase 1 and/or phase 5 may be lagged.
- Set all detector units to presence mode.
- Locate new cabinet so as not to obstruct sight distance of vehicles turning right on red.
- The Division Traffic Engineer will determine the hours of use for each phasing plan.
- This intersection uses multi-zone microwave detection. Install detectors according to the manufacturer's instructions to achieve desired detection.
- Maximum times shown in timing chart are for free-run operation only. Coordinated signal system timing values supersede these values.



SIGNAL FACE I.D.
All Heads L.E.D.

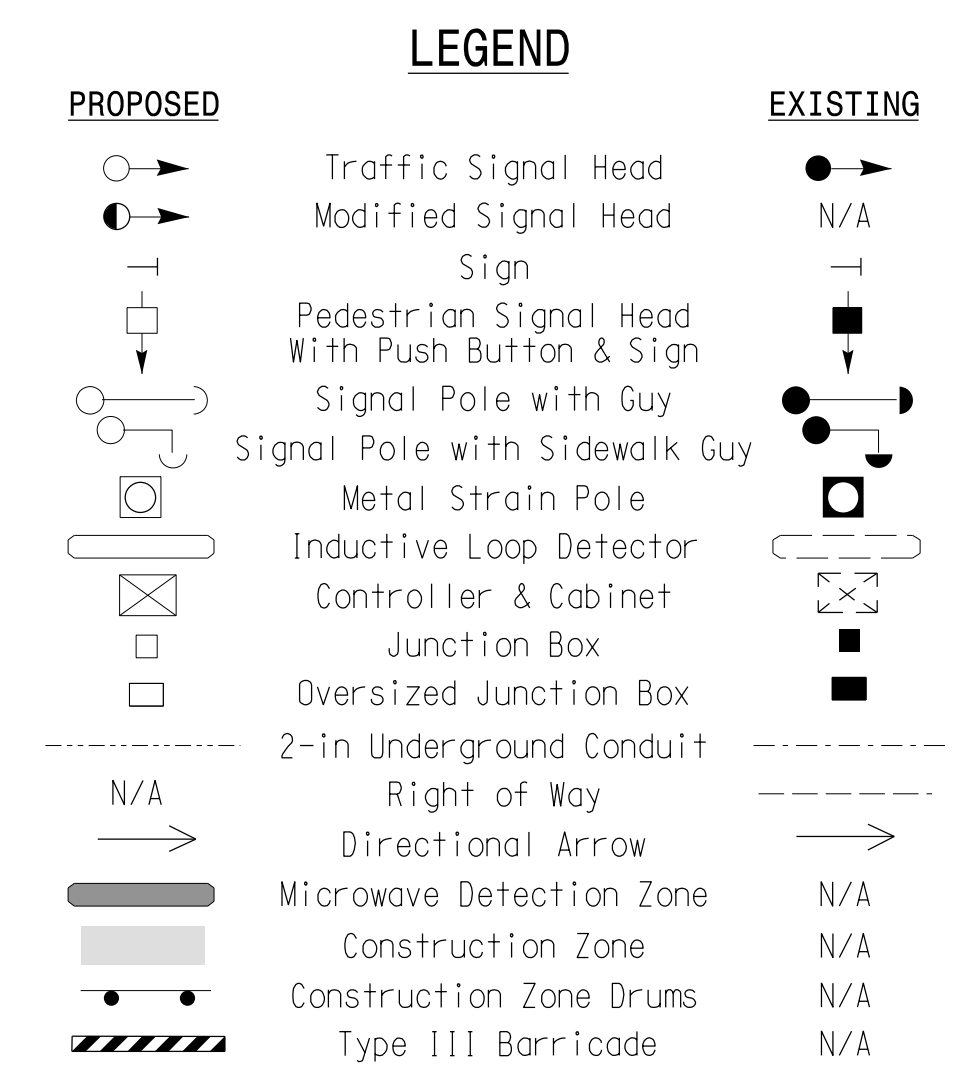


MAXTIME TIMING CHART

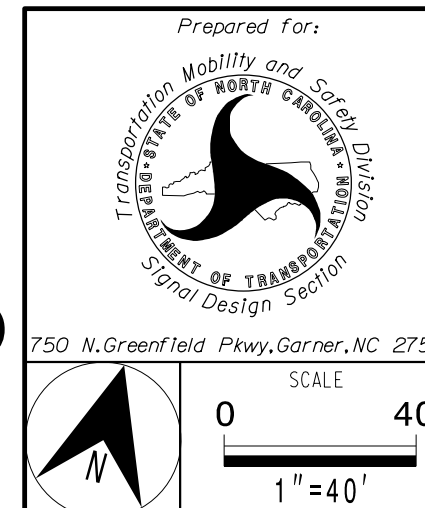
FEATURE	PHASE					
	1	2	4	5	6	8
Walk *	-	-	-	-	-	-
Ped Clear	-	-	-	-	-	-
Min Green*	7	12	7	7	12	7
Passage *	2.0	2.0	2.0	2.0	2.0	2.0
Max 1 *	15	90	20	15	90	20
Yellow Change	3.0	4.5	4.5	3.0	4.5	4.5
Red Clear	2.4	1.6	1.3	2.6	1.6	1.3
Added Initial *	-	-	-	-	-	-
Maximum Initial *	-	-	-	-	-	-
Time Before Reduction *	-	-	-	-	-	-
Time To Reduce *	-	-	-	-	-	-
Minimum Gap	-	-	-	-	-	-
Advance Walk	-	-	-	-	-	-
Non Lock Detector	X	-	X	X	-	X
Vehicle Recall	-	MIN RECALL	-	-	MIN RECALL	-
Dual Entry	-	-	X	-	-	X

Microwave Detection System

FUNCTION	Sensor 1 (2A)	Sensor 2 (6A)
Channel	1	1
Phase	2	6
Direction of Travel	EB	WB
Detection Zone (ft)	100-500	100-500
Enable Speed	Y	Y
Speed Range (mph)	35-100	35-100
Enable Estimated Time of Arrival	Y	Y
Estimated Time of Arrival (sec)	2.5-6.5	2.5-6.5



Signal Upgrade Temporary Design 1 - (TMP Phase 1)



SR 1003 (Camden Road) at SR 1113 (Waldos Beach Road) / Waldos Beach Road

Division 6 Cumberland County Hope Mills

PLAN DATE: August 2024 REVIEWED BY: LM Moon

PREPARED BY: MR Stanley/DJW DRMP PROJ. NO.: 2400555

REVISIONS	INIT.	DATE



* These values may be field adjusted. Do not adjust Min Green and Extension times for phases 2 and 6 lower than what is shown. Min Green for all other phases should not be lower than 4 seconds.