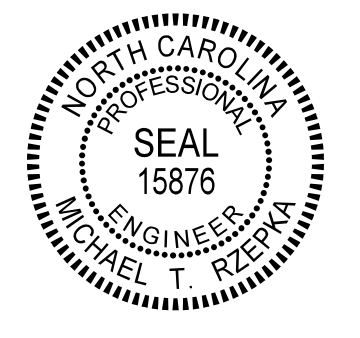


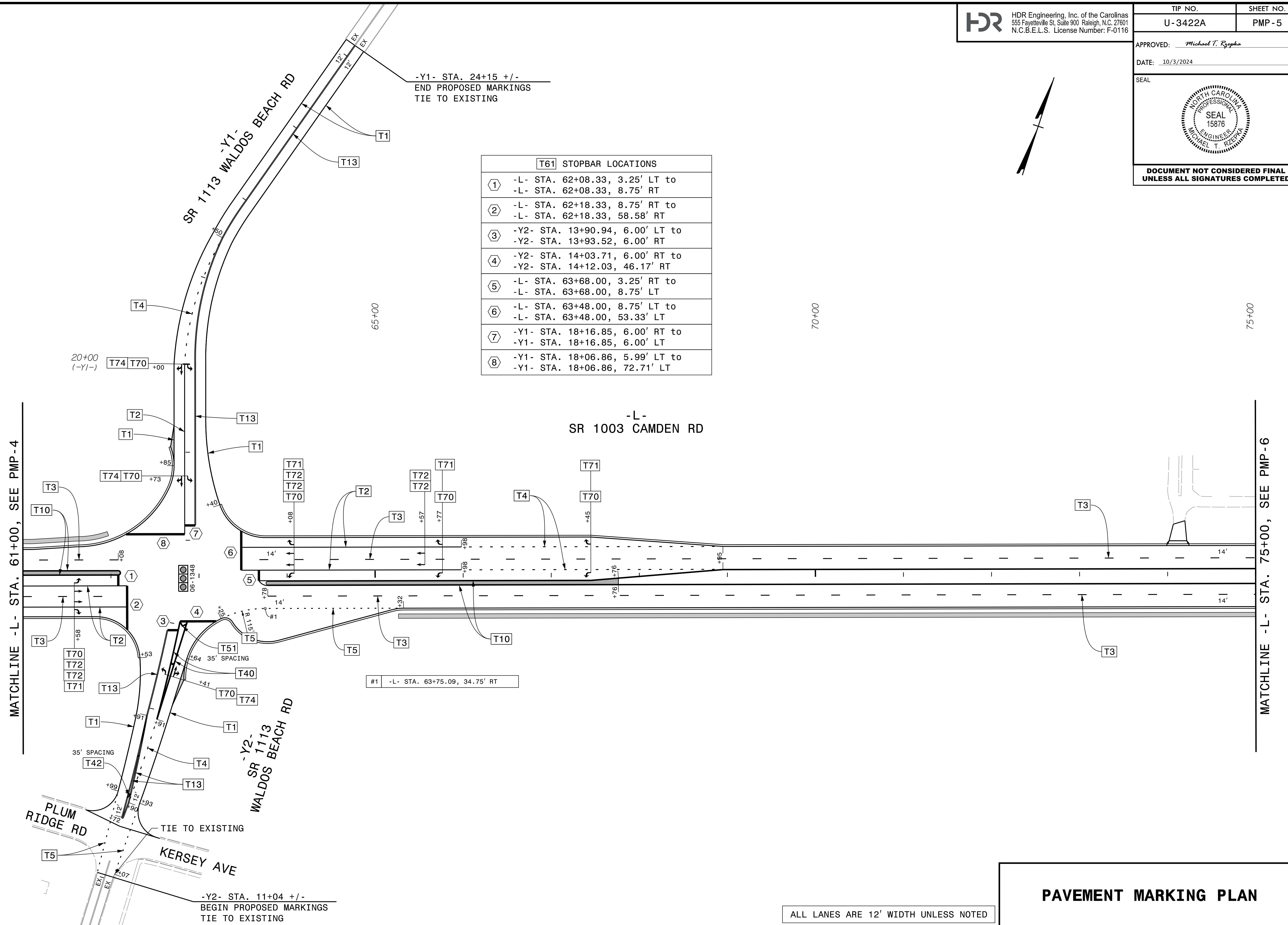
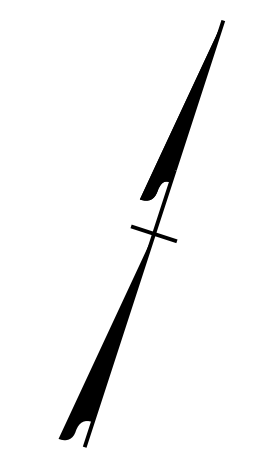
APPROVED: *Michael T. Rzepka*

DATE: 10/3/2024

SEAL



**DOCUMENT NOT CONSIDERED FINAL  
UNLESS ALL SIGNATURES COMPLETED**



T61 STOPBAR LOCATIONS	
①	-L- STA. 62+08.33, 3.25' LT to -L- STA. 62+08.33, 8.75' RT
②	-L- STA. 62+18.33, 8.75' RT to -L- STA. 62+18.33, 58.58' RT
③	-Y2- STA. 13+90.94, 6.00' LT to -Y2- STA. 13+93.52, 6.00' RT
④	-Y2- STA. 14+03.71, 6.00' RT to -Y2- STA. 14+12.03, 46.17' RT
⑤	-L- STA. 63+68.00, 3.25' RT to -L- STA. 63+68.00, 8.75' LT
⑥	-L- STA. 63+48.00, 8.75' LT to -L- STA. 63+48.00, 53.33' LT
⑦	-Y1- STA. 18+16.85, 6.00' RT to -Y1- STA. 18+16.85, 6.00' LT
⑧	-Y1- STA. 18+06.86, 5.99' LT to -Y1- STA. 18+06.86, 72.71' LT

PLOT DRIVER: NCDOT\_color\_eng\_50.pit  
USER: CHARNDEN  
DATE: 9/4/2024  
FILE: p:\p\h\users\charnd\us-east\01\Documents\3322\10001377\10086583\6.0.CAD.BIM\6.2.Work\In-Progress\U-3422A\Traffic Pavement Marking\U3422A-PL-PMP05.dgn

MATCHLINE -L- STA. 61+00, SEE PMP-4

MATCHLINE -L- STA. 75+00, SEE PMP-6

PLUM RIDGE RD

KERSEY AVE

SR 1113 WALDOS BEACH RD

-L- SR 1003 CAMDEN RD

SR 1113 WALDOS BEACH RD

-Y1- STA. 24+15 +/-  
END PROPOSED MARKINGS  
TIE TO EXISTING

-Y2- STA. 11+04 +/-  
BEGIN PROPOSED MARKINGS  
TIE TO EXISTING

#1 -L- STA. 63+75.09, 34.75' RT

ALL LANES ARE 12' WIDTH UNLESS NOTED

### PAVEMENT MARKING PLAN