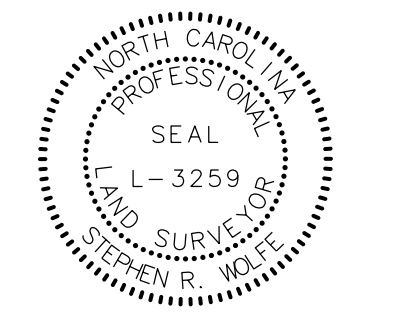


PROJECT REFERENCE NO.	SHEET NO.
U-3422	RW07
Location and Surveys	
JoynerKeeny, PLLC 1051 N. Winstead Avenue Rocky Mount, NC 27804 252-977-3124 North Carolina Firm Number P-0551	
PROJECT SURVEYOR	
	

DOCUMENT NOT CONSIDERED FINAL UNLESS ALL SIGNATURES COMPLETED

I, STEPHEN R. WOLFE, certify that the right of way and permanent easement monumentation for this project shown herein was completed under my direct and responsible charge from an actual survey made under my supervision; that all horizontal closures had a minimum ratio of precision of 1:10,000 (Class A). Field work was performed from 06FEB2023 to 19JUN2023, and all coordinates are based on NAD83/2011; That this survey was performed to meet the requirements of 21NCAC 56.1600 as applicable.

This 19th day of June, 2023.

DocuSigned by: Stephen Wolfe

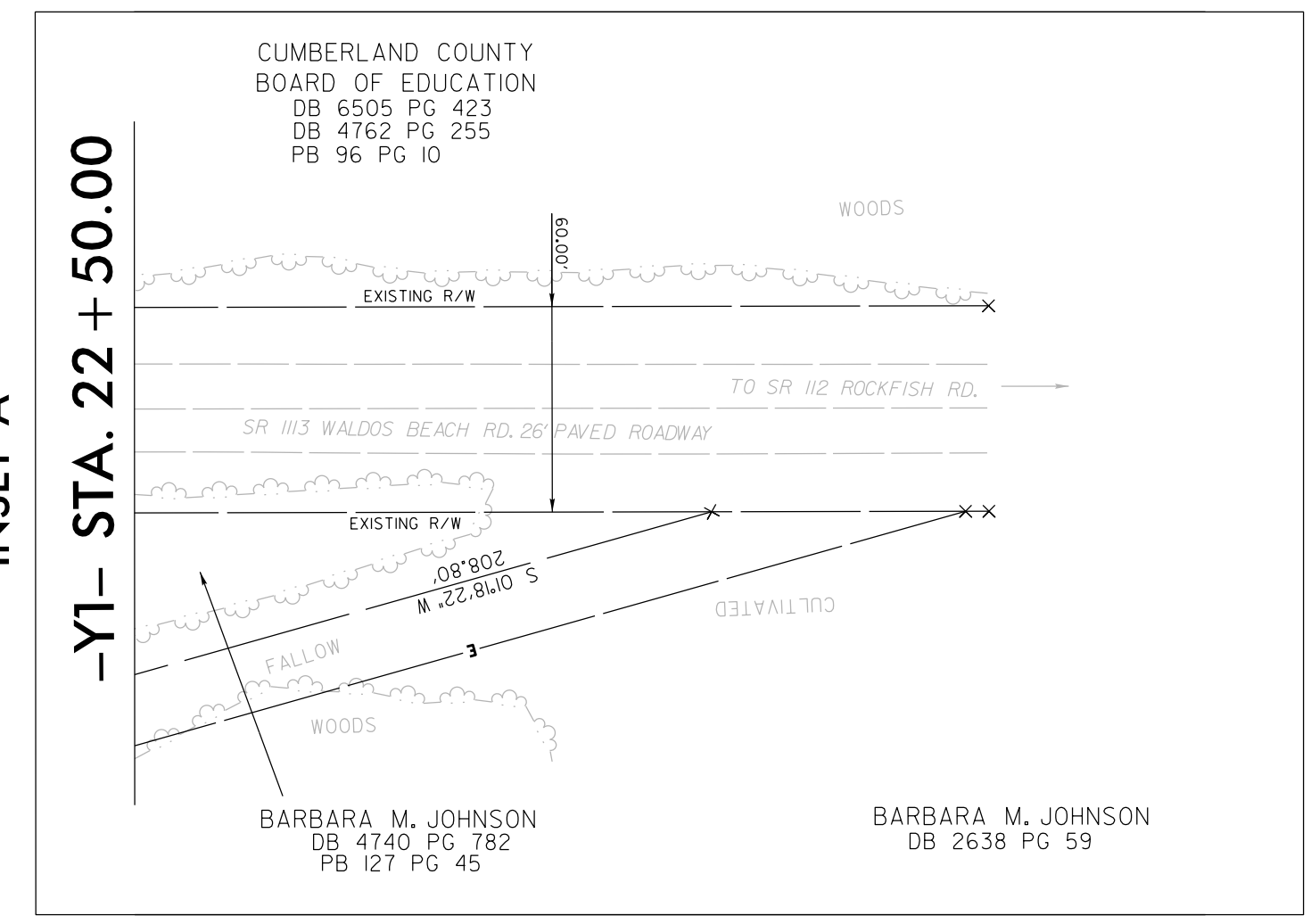
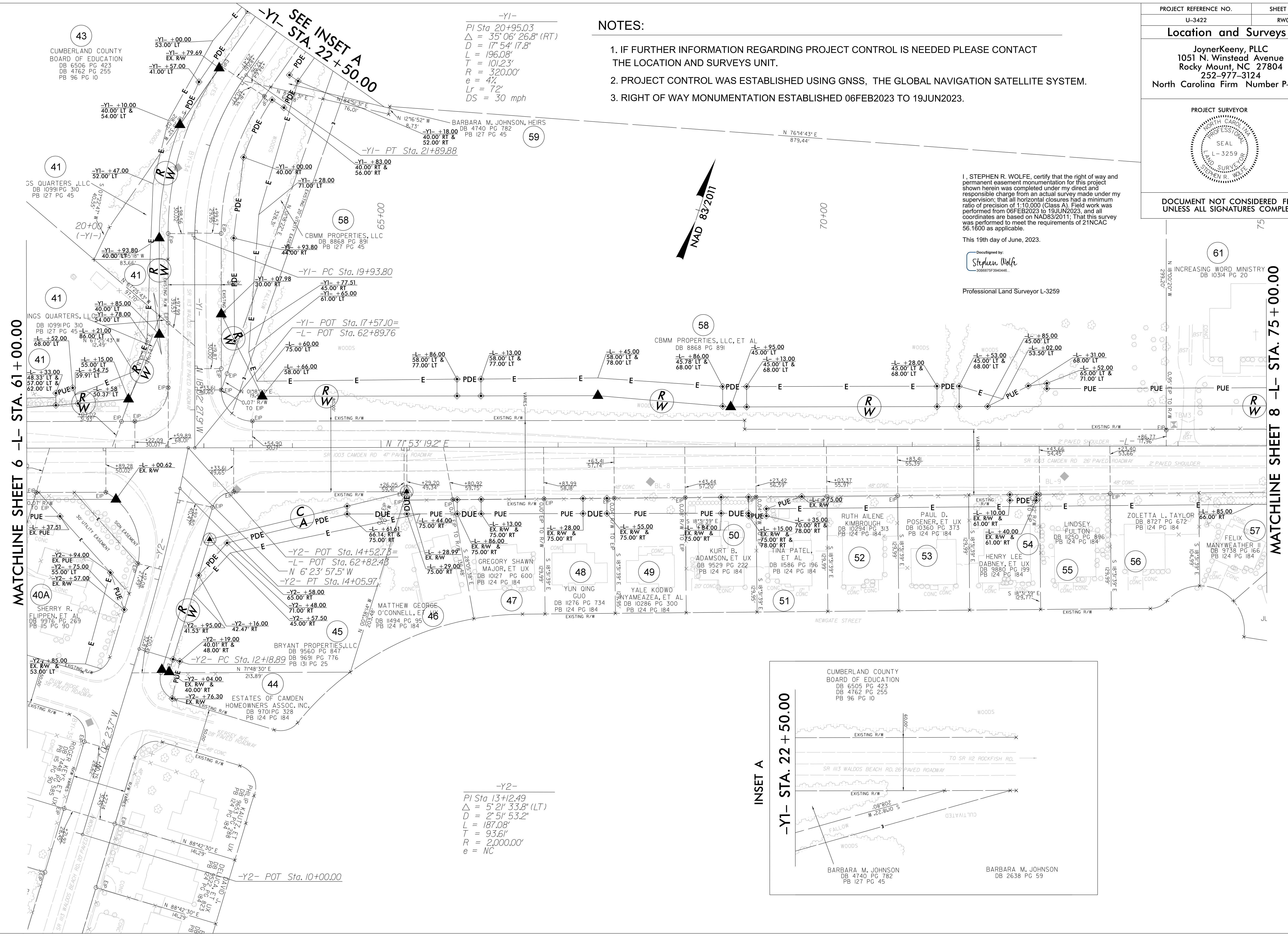
Professional Land Surveyor L-3259

NOTES:

1. IF FURTHER INFORMATION REGARDING PROJECT CONTROL IS NEEDED PLEASE CONTACT THE LOCATION AND SURVEYS UNIT.
2. PROJECT CONTROL WAS ESTABLISHED USING GNSS, THE GLOBAL NAVIGATION SATELLITE SYSTEM.
3. RIGHT OF WAY MONUMENTATION ESTABLISHED 06FEB2023 TO 19JUN2023.

-Y1-
 PI Sta 20+95.03
 $\Delta = 35^{\circ}06'26.8''$ (RT)
 $D = 17^{\circ}54'17.8''$
 $L = 196.08'$
 $T = 101.23'$
 $R = 320.00'$
 $e = 4'$
 $Lr = 72'$
 $DS = 30$ mph

-Y2-
 PI Sta 13+12.49
 $\Delta = 5^{\circ}21'33.8''$ (LT)
 $D = 2^{\circ}51'53.2''$
 $L = 187.08'$
 $T = 93.61'$
 $R = 2,000.00'$
 $e = NC$



REVISIONS

3252022: PARCELS 40A, 41, 45, 46, 60 PUE REVISED; PARCELS 45, 46 DUE ADDED; PARCELS 45, 59, 62 PDE REVISED; PARCEL 60 DUE REMOVED; PARCEL 60 PDE ADDED
 15/2023: PARCELS 42, 42A, AND 42B CHANGED TO PARCEL 41
 31/2023: PARCELS 62, 70, 71, 72, AND 80 CHANGED TO PARCEL 59
 32/2023: PARCEL 60 CHANGED TO PARCEL 58
 21 JUN 2023: 1:00 PM 55E NCDOT U3422.RW Staking-Cumberland\SURVEY\WORK\RM\RM SERIES SHEETS\U3422.1.s.rw07.dgn
 AT: JKA-042

MATCHLINE SHEET 6 -L- STA. 61+00.00

MATCHLINE SHEET 8 -L- STA. 75+00.00

43
 CUMBERLAND COUNTY
 BOARD OF EDUCATION
 DB 6506 PG 423
 DB 4762 PG 255
 PB 96 PG 10

41
 SS QUARTERS, LLC
 DB 10991 PG 310
 PB 127 PG 45

41
 INGS QUARTERS, LLC
 DB 10991 PG 310
 PB 127 PG 45

40A
 SHERRY R.
 DB 1151 PG 90

44
 ESTATES OF CAMDEN
 HOMEOWNERS ASSOC. INC.
 DB 9701 PG 328
 PB 124 PG 184

45
 BRYANT PROPERTIES, LLC
 DB 9560 PG 847
 PB 131 PG 25

46
 MATTHEW GEORGE
 O'CONNELL, ET
 DB 11494 PG 95
 PB 124 PG 184

47
 GREGORY SHAWN
 MAJOR, ET UX
 DB 10127 PG 600
 PB 124 PG 184

48
 YUN QING
 GUO
 DB 11276 PG 734
 PB 124 PG 184

49
 YALE KODWO
 NYAMEAZEA, ET AL
 DB 10286 PG 300
 PB 124 PG 184

50
 KURT B.
 ADAMSON, ET UX
 DB 9529 PG 222
 PB 124 PG 184

51
 TINA PATEL,
 ET AL
 DB 11586 PG 196
 PB 124 PG 184

52
 RUTH AILENE
 KIMBROUGH
 DB 10294 PG 313
 PB 124 PG 184

53
 PAUL D.
 POSENER, ET UX
 DB 10360 PG 373
 PB 124 PG 184

54
 HENRY LEE
 DABNEY, ET UX
 DB 9880 PG 199
 PB 124 PG 184

55
 LINDSEY
 FULTON
 DB 11250 PG 896
 PB 124 PG 184

56
 ZOLETTA L. TAYLOR
 DB 8727 PG 672
 PB 124 PG 184

57
 FELIX
 MANYWEATHER II
 DB 9738 PG 166
 PB 124 PG 184

58
 CBMM PROPERTIES, LLC, ET AL
 DB 8868 PG 891

59
 BARBARA M. JOHNSON, HEIRS
 DB 4740 PG 782
 PB 127 PG 45

61
 INCREASING WORD MINISTRY
 DB 10314 PG 20