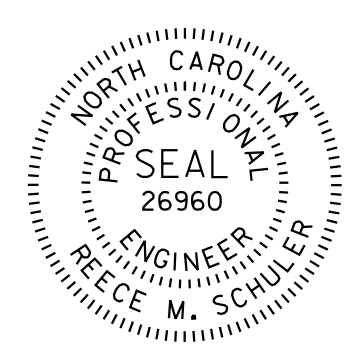


TIP NO.	SHEET NO.
B-5372	PMP-1
APPROVED: <i>Reece M. Schuler</i> <small>16834034C7824FC</small>	
DATE: 10/28/2024	
	
DOCUMENT NOT CONSIDERED FINAL UNLESS ALL SIGNATURES COMPLETED	

**STATE OF NORTH CAROLINA
DEPARTMENT OF TRANSPORTATION**

**PAVEMENT MARKING PLAN
CABARRUS COUNTY**

T.I.P.: B-5372

CONTRACT: C204384

INDEX

SHEET NO.	DESCRIPTION
PMP-1	PAVEMENT MARKING PLAN TITLE AND SCHEDULE SHEET
PMP-2	PAVEMENT MARKING DETAIL

GENERAL NOTES

- THE FOLLOWING GENERAL NOTES APPLY AT ALL TIMES FOR THE DURATION OF THE CONSTRUCTION PROJECT, EXCEPT WHEN OTHERWISE NOTED IN THE PLAN, OR DIRECTED BY THE ENGINEER.
- A) INSTALL PAVEMENT MARKINGS AND PAVEMENT MARKERS ON THE FINAL SURFACE AS FOLLOWS:

ROAD NAME	MARKING	MARKER
ALL ROADS	THERMOPLASTIC	SNOWPLOWABLE
BRIDGE	COLD APPLIED	SNOWPLOWABLE
 - B) TIE PROPOSED PAVEMENT MARKING LINES TO EXISTING PAVEMENT MARKING LINES.
 - C) REMOVE/REPLACE ANY CONFLICTING/DAMAGED PAVEMENT MARKINGS AND MARKERS.
 - D) PASSING ZONES WILL BE DETERMINED IN THE FIELD AND MUST BE APPROVED BY THE ENGINEER.
 - E) REMOVE ALL RESIDUE AND SURFACE LAITANCE BY ACCEPTABLE METHODS ON CONCRETE BRIDGE DECKS PRIOR TO PLACING COLD APPLIED PLASTIC PAVEMENT MARKING MATERIAL.
 - F) UNLESS OTHERWISE SPECIFIED, HEATED-IN-PLACE THERMOPLASTIC MAY BE USED IN LIEU OF EXTRUDED THERMOPLASTIC FOR STOP BARS, SYMBOLS, CHARACTERS AND DIAGONALS. IF HEATED-IN-PLACE IS USED, IT SHALL BE PAID FOR USING THE EXTRUDED THERMOPLASTIC PAY ITEM.

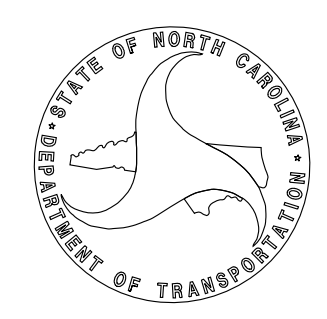
ROADWAY STANDARD DRAWING


THE FOLLOWING ROADWAY STANDARDS AS APPEAR IN "ROADWAY STANDARD DRAWINGS" - PROJECT SERVICES UNIT - N.C. DEPARTMENT OF TRANSPORTATION - RALEIGH, N.C., DATED JANUARY 2024 ARE APPLICABLE TO THIS PROJECT AND BY REFERENCE HEREBY ARE CONSIDERED A PART OF THESE PLANS:

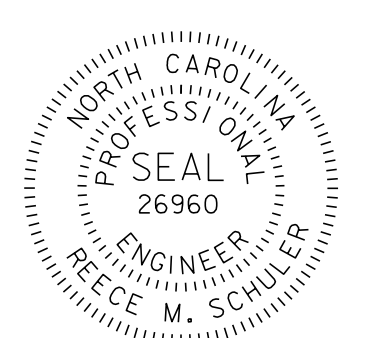

STD. NO.	TITLE
1205.01	PAVEMENT MARKINGS - LINE TYPES AND OFFSETS
1205.02	PAVEMENT MARKINGS - TWO-LANE AND MULTILANE ROADWAYS
1205.03	PAVEMENT MARKINGS - EXIT AND ENTRANCE RAMP
1205.04	PAVEMENT MARKINGS - INTERSECTIONS
1205.12	PAVEMENT MARKINGS - BRIDGES
1250.01	RAISED PAVEMENT MARKERS - INSTALLATION SPACING
1251.01	RAISED PAVEMENT MARKERS - PERMANENT AND TEMPORARY
1261.01	GUARDRAIL AND BARRIER DELINEATORS - INSTALLATION SPACING
1261.02	GUARDRAIL AND BARRIER DELINEATORS - TYPES AND MOUNTING
1262.01	GUARDRAIL END DELINEATION
1267.01	FLEXIBLE DELINEATORS - INSTALLATION
1267.02	FLEXIBLE DELINEATORS - SPACING TABLES
1267.03	FLEXIBLE DELINEATORS - INTERCHANGE PLACEMENT

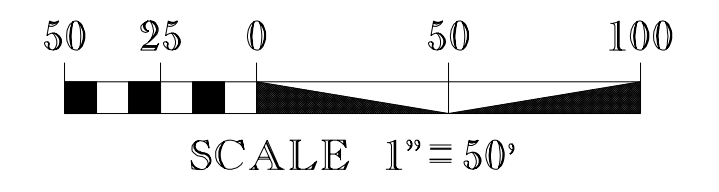
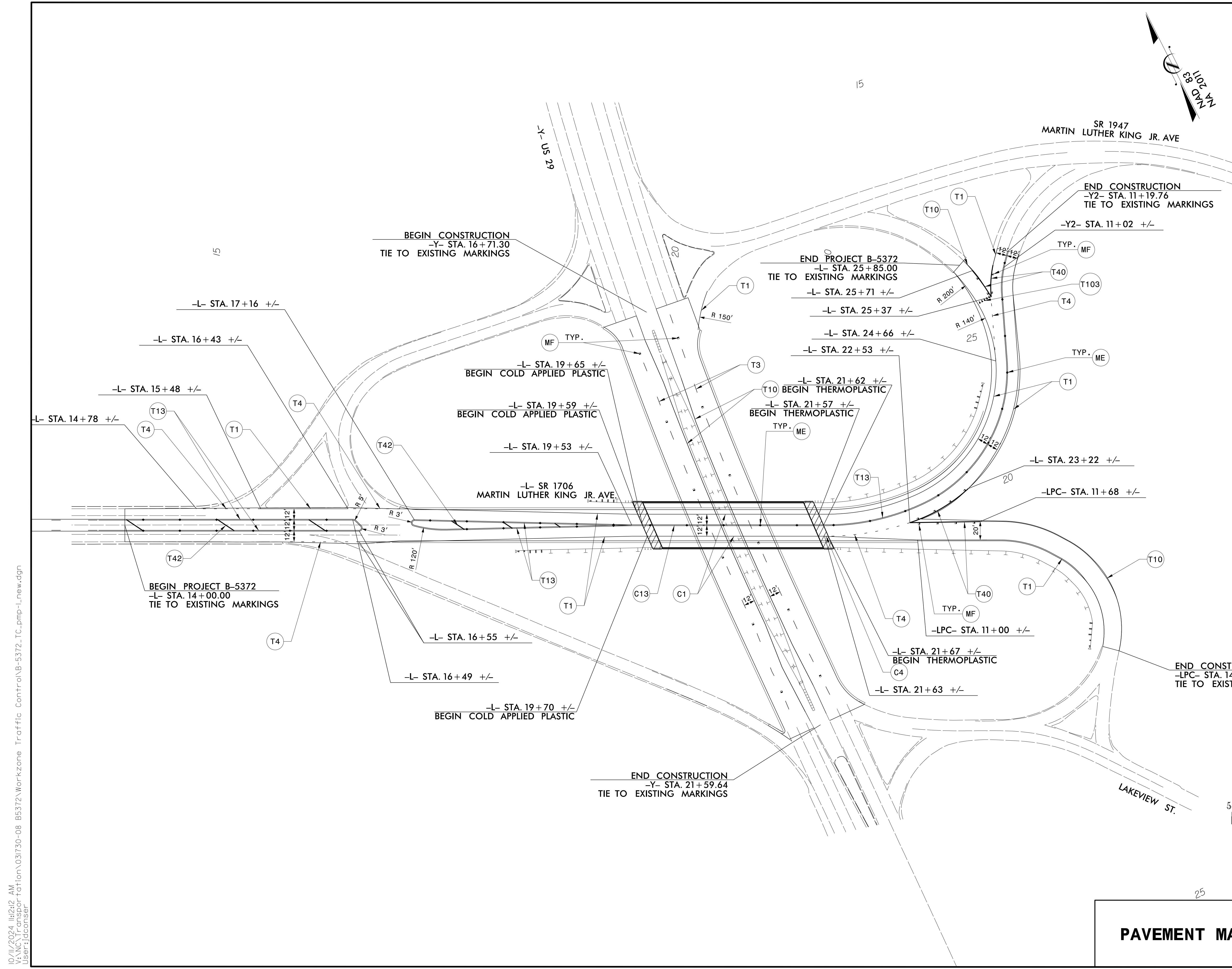
FINAL PAVEMENT MARKING SCHEDULE

SYMBOL	DESCRIPTION
T1	WHITE EDGE LINE (4", 90 MIL)
T3	10 FT. WHITE SKIP (4", 90 MIL)
T4	3 FT. - 9 FT. /SP WHITE MINISKIP (4", 90 MIL)
T10	YELLOW EDGE LINE (4", 90 MIL)
T13	YELLOW DOUBLE CENTER (4", 90 MIL)
T40	WHITE GORELINE (8", 90 MIL)
T42	YELLOW DIAGONAL (8", 90 MIL)
T103	24" YIELD LINE TRIANGLE (90 MIL)
C1	WHITE EDGELINE (4")
C4	3 FT. - 9 FT. /SP WHITE MINISKIP (4")
C13	YELLOW DOUBLE CENTER (4")
ME	SNOWPLOWABLE MARKER
MF	SNOWPLOWABLE MARKER

PLAN SUBMITTED TO:	
<u>KELVIN JORDAN</u>	
<u>ASHLEY MATTHEWS, PE</u>	

PLAN PREPARED BY: JMT	 <small>Johnson, Mirmiran, & Thompson Inc. 2550 West Tyvola Road, Suite 120, Charlotte, NC 28217 License No: C-3097</small>
<u>REECE M. SCHULER, P.E., P.L.S.</u> PROJECT ENGINEER	
<u>JON FORD, P.E.</u> PROJECT DESIGN ENGINEER	

TIP NO. B-5372	SHEET NO. PMP - 2
APPROVED: <i>Reece M. Schuler</i> 10034024C7B24FC	
DATE: 10/28/2024	
SEAL 	
DOCUMENT NOT CONSIDERED FINAL UNLESS ALL SIGNATURES COMPLETED	
 Johnson, Mirman, & Thompson Inc. 2550 West Tryolla Road, Suite 120, Charlotte, NC, 28217 License No: C-3097	



10/11/2024 10:24:22 AM
 V:\NC\Transpor-tation\031730-08 B5372\Workzone Traffic Control\B-5372_TC_pmp-L_new.dgn
 User:jdconser

25

PAVEMENT MARKING DETAIL