

SURVEY CONTROL SHEET

PROJECT REFERENCE NO.	SHEET NO.
B-5372	RW-1
Location and Surveys	

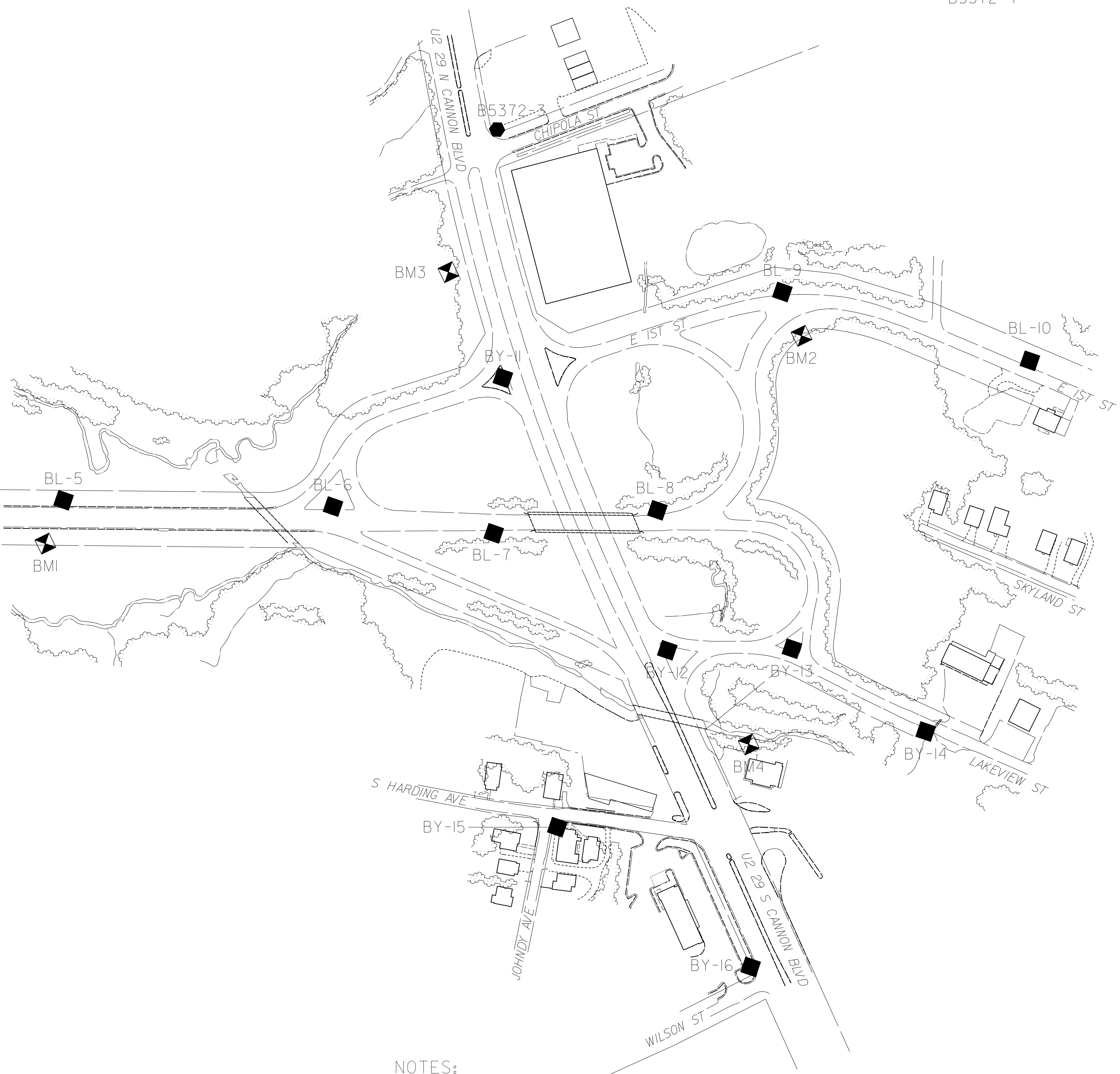
●
B5372-4



● B5372-1

● B5372-2

● B5372-3



DATUM DESCRIPTION

THE LOCALIZED COORDINATE SYSTEM DEVELOPED FOR THIS PROJECT IS BASED ON THE STATE PLANE COORDINATES ESTABLISHED BY NCGS FOR MONUMENT "B5372-3"

WITH NAD 83/NA 2011 STATE PLANE GRID COORDINATES OF
 NORTHING: 638831.291(ft) EASTING: 1520637.940(ft)
 ELEVATION: 729.805(ft)

THE AVERAGE COMBINED GRID FACTOR USED ON THIS PROJECT (GROUND TO GRID) IS: 0.999850980

THE N.C. LAMBERT GRID BEARING AND LOCALIZED HORIZONTAL GROUND DISTANCE FROM "B5372-3" TO -L- STATION 17+00.00 IS
 S 42° 00' 19" W 738.74'

ALL LINEAR DIMENSIONS ARE LOCALIZED HORIZONTAL DISTANCES
 VERTICAL DATUM USED IS NAVD 88

NOTES:

1. IF FURTHER INFORMATION REGARDING PROJECT CONTROL IS NEEDED, PLEASE CONTACT THE LOCATION AND SURVEYS UNIT.
2. PROJECT CONTROL WAS ESTABLISHED USING GNSS, THE GLOBAL NAVIGATION SATELLITE SYSTEM.

REVISIONS

6/2/09

7/8/2024 2:37:34 PM
 S:\Projects\5372\15-1C-1.dgn
 11/15/2024