

TIP PROJECT: BR-0063

CONTRACT: C204969

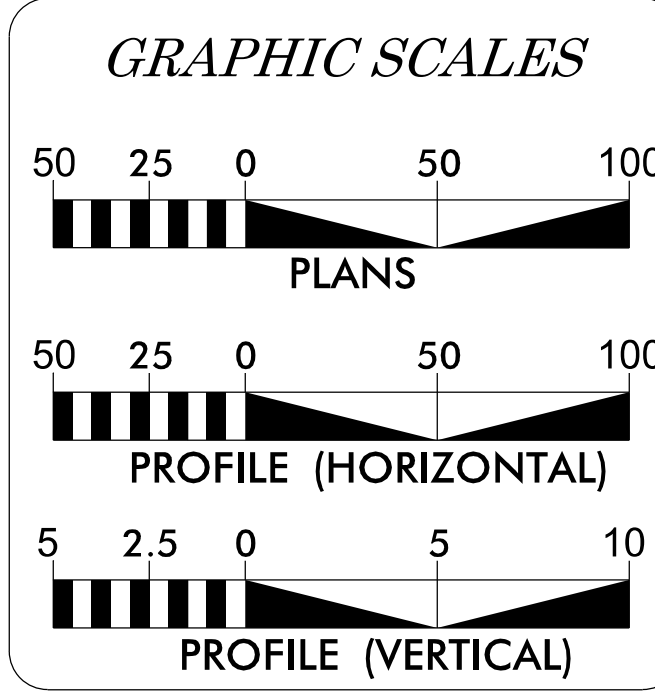
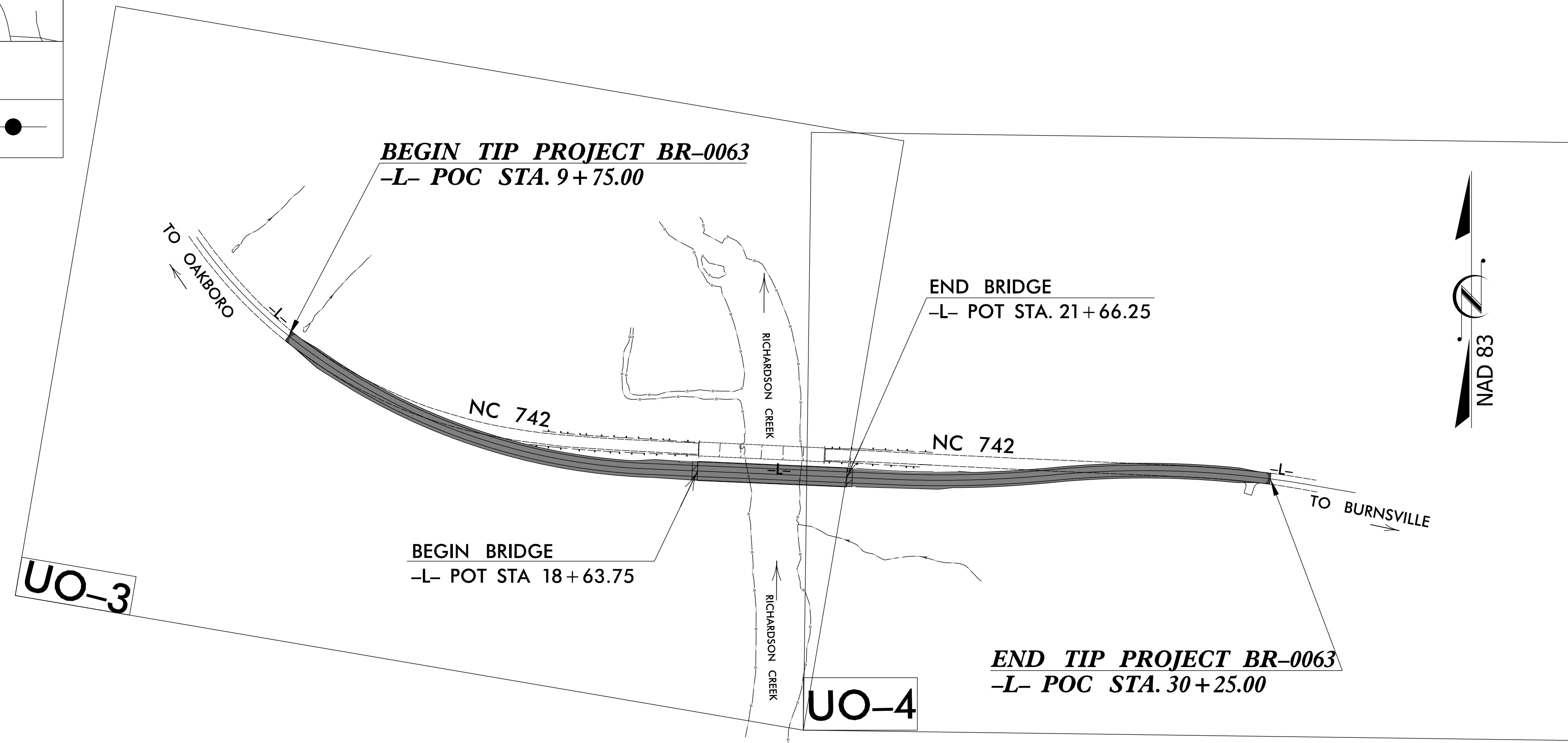
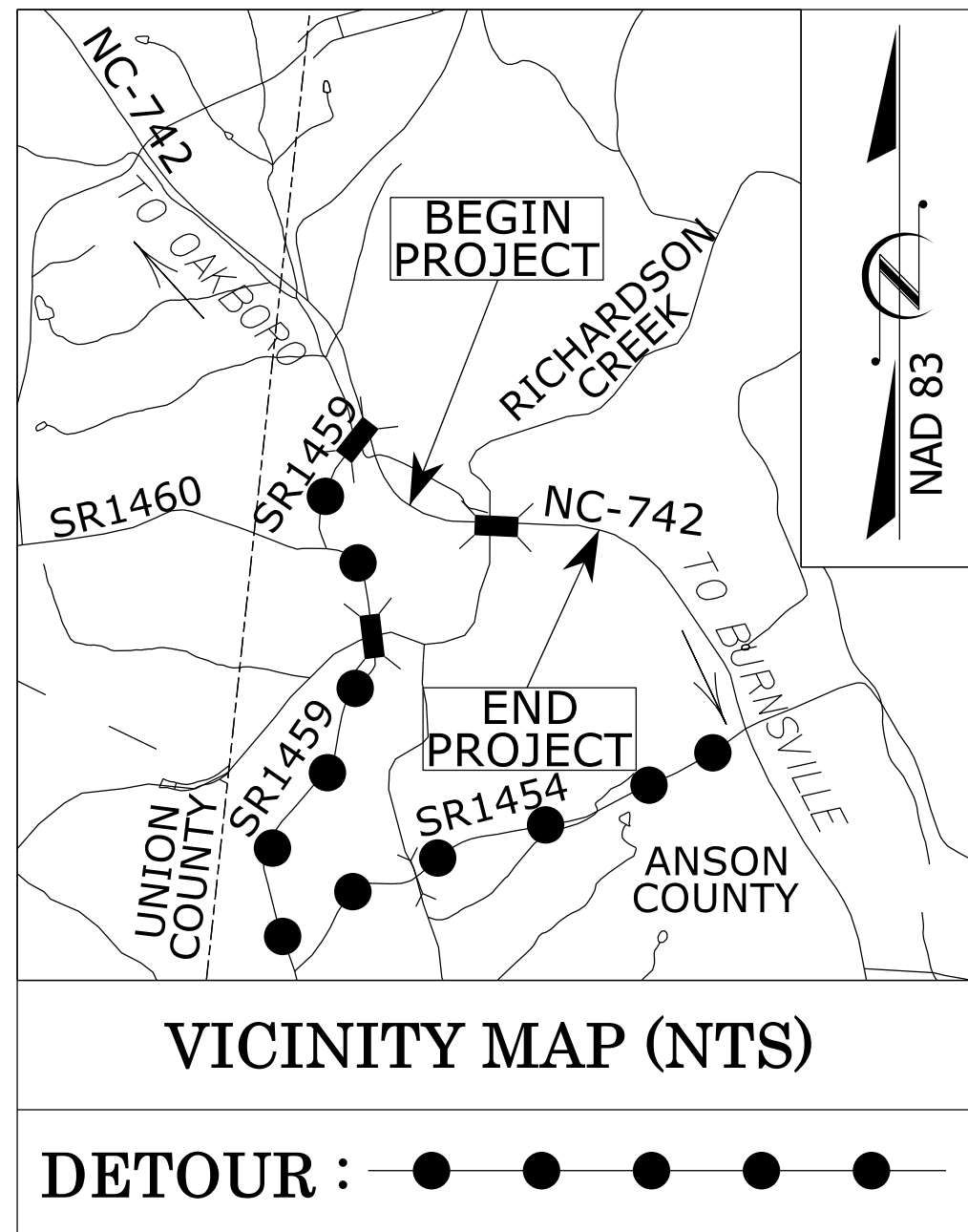
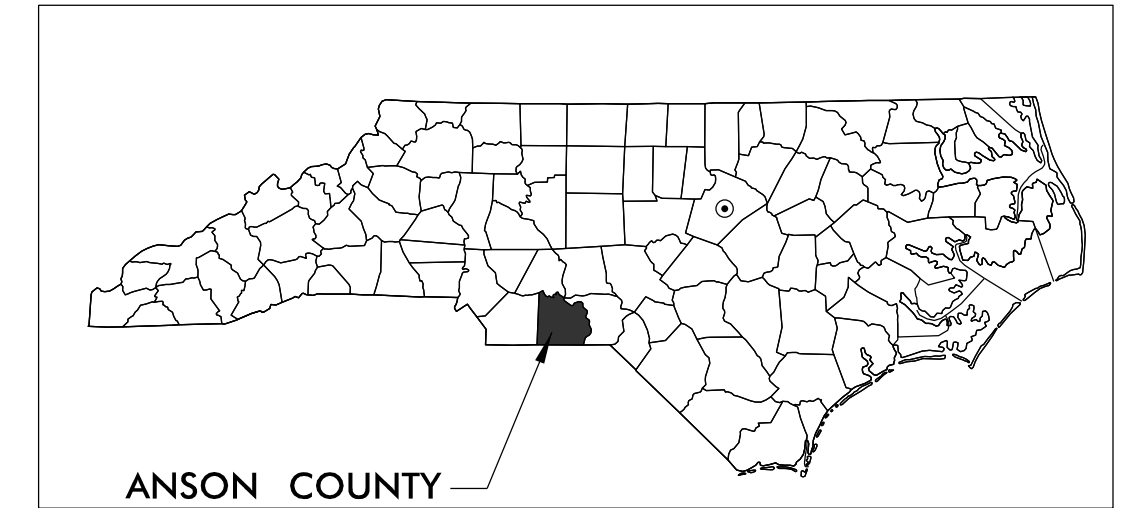
STATE OF NORTH CAROLINA  
DIVISION OF HIGHWAYS

UTILITY BY OTHERS PLANS  
ANSON COUNTY

LOCATION: *REPLACEMENT OF BRIDGE 030087 OVER RICHARDSON CREEK ON NC 742*  
TYPE OF WORK: *GRADING, PAVING, DRAINAGE AND STRUCTURE*

STATE	STATE PROJECT REFERENCE NO.	SHEET NO.	TOTAL SHEETS
N.C.	BR-0063	UO-1	4

NOTE:  
ALL PROPOSED UTILITY WORK SHOWN ON THIS SHEET WILL BE DONE BY OTHERS. NO PAYMENT WILL BE MADE TO THE CONTRACTOR FOR PROPOSED UTILITY WORK SHOWN ON THIS SHEET.



INDEX OF SHEETS

SHEET NO:	DESCRIPTION:
UO-1	TITLE SHEET
UO-2	SYMBOLS
UO-3-4	UBO PLAN SHEETS

UTILITY OWNERS WITH CONFLICTS

(A) POWER - PEE DEE EMC  
(B) COMMUNICATIONS - DUKE ENERGY FIBER  
(C) COMMUNICATIONS - WINDSTREAM

**Colliers**  
Engineering & Design

PREPARED IN THE OFFICE OF:  
COLLIERS ENGINEERING & DESIGN  
2000 REGENCY PARKWAY SUITE 295  
CARY, NORTH CAROLINA 27518

FOR NORTH CAROLINA DEPARTMENT OF TRANSPORTATION

DAVID TALBERT PROJECT UTILITY COORDINATOR  
DAVID TALBERT PROJECT UTILITY DESIGN

DIVISION OF HIGHWAYS  
DIVISION 10  
716 W MAIN ST  
ALBEMARLE, NC 28001

LYNN BASINGER  
DIVISION UTILITY ENGINEER

ADAM PRESLAR  
DIVISION SR UTILITY COORDINATOR

STATE OF NORTH CAROLINA  
DIVISION OF HIGHWAYS

**UTILITIES PLAN SHEET SYMBOLS**

**PROPOSED WATER SYMBOLS**

Water Line (Sized as Shown)	12" W
11¼ Degree Bend	+•+
22½ Degree Bend	+•x
45 Degree Bend	+•x
90 Degree Bend	+•+
Plug	⊥
Tee	+•+
Cross	+•+
Reducer	▶
Gate Valve	GV
Butterfly Valve	BV
Tapping Valve	TGV
Line Stop	LS
Line Stop with Bypass	LS/BP
Blow Off	BO
Fire Hydrant	PEH
Relocate Fire Hydrant	REH
Remove Fire Hydrant	REM FH
Water Meter	PWM
Relocate Water Meter	RWM
Remove Water Meter	REM WM
Water Pump Station	PS(W)
RPZ Backflow Preventer	PRPZ
DCV Backflow Preventer	PBFP
Relocate RPZ Backflow Preventer	RRPZ
Relocate DCV Backflow Preventer	RBFP

**PROPOSED SEWER SYMBOLS**

Gravity Sewer Line (Sized as Shown)	12" SS
Force Main Sewer Line (Sized as Shown)	12" FSS
Manhole (Sized per Note)	○
Sewer Pump Station	PS(SS)

**PROPOSED MISCELLANEOUS UTILITIES SYMBOLS**

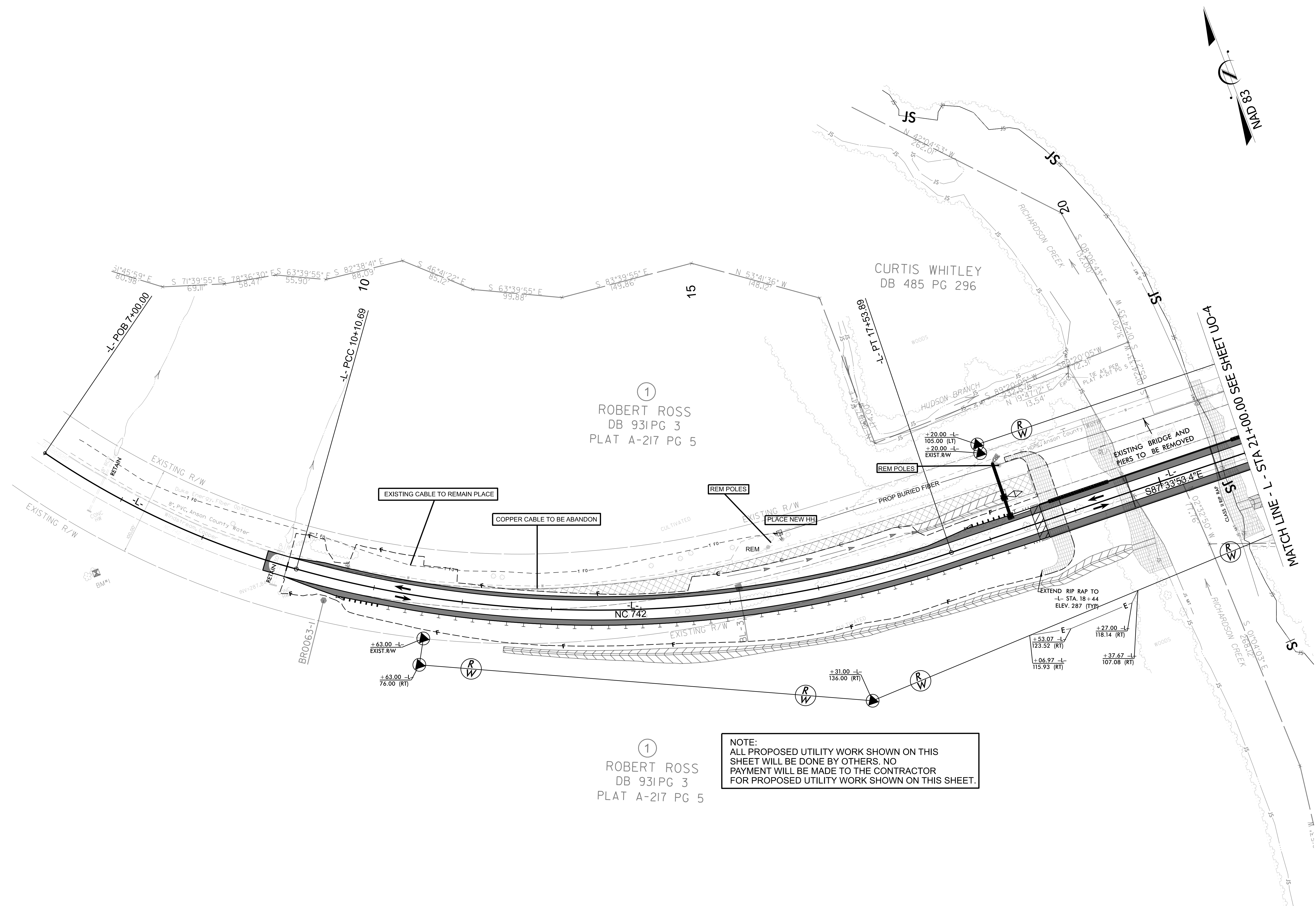
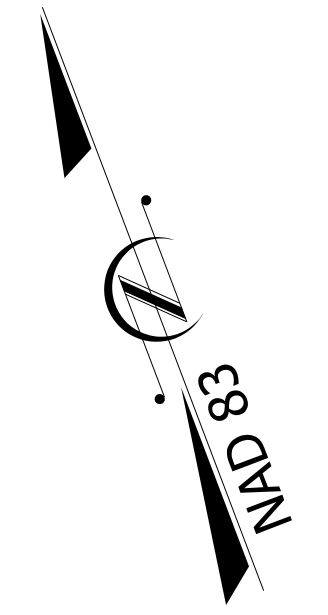
Power Pole	○
Telephone Pole	○
Joint Use Pole	○
Telephone Pedestal	TEL PED
Utility Line by Others (Type as Shown)	PROP O/H POW LINES
Trenchless Installation	12" TL INSTALL
Encasement by Open Cut	24" ENCAS BY OC
Encasement	24" ENCASUREMENT

Thrust Block	⊥
Air Release Valve	AR
Utility Vault	UV
Concrete Pier	CP
Steel Pier	SP
Plan Note	NOTE
Pay Item Note	PAY ITEM

**EXISTING UTILITIES SYMBOLS**

Power Pole	○
Telephone Pole	○
Joint Use Pole	○
Utility Pole	○
Utility Pole with Base	□
H-Frame Pole	○
Power Transmission Line Tower	⊗
Water Manhole	⊗
Power Manhole	⊗
Telephone Manhole	⊗
Sanitary Sewer Manhole	⊗
Hand Hole for Cable	⊗
Power Transformer	⊗
Telephone Pedestal	⊗
CATV Pedestal	⊗
Gas Valve	◇
Gas Meter	◇
Located Miscellaneous Utility Object	○
Abandoned According to Utility Records	AATUR
End of Information	E.O.I.
*Underground Power Line	P
*Underground Telephone Cable	T
*Underground Telephone Conduit	TC
*Underground Fiber Optics Telephone Cable	T FO
*Underground TV Cable	TV
*Underground Fiber Optics TV Cable	TV FO
*Underground Gas Pipeline	G
Aboveground Gas Pipeline	A/G Gas
*Underground Water Line	W
Aboveground Water Line	A/G Water
*Underground Gravity Sanitary Sewer Line	SS
Aboveground Gravity Sanitary Sewer Line	A/G Sanitary Sewer
*Underground SS Forced Main Line	FSS
Underground Unknown Utility Line	UUL
SUE Test Hole	⊗
Water Meter	⊗
Water Valve	⊗
Fire Hydrant	⊗
Sanitary Sewer Cleanout	⊗

\*For Existing Utilities  
 Utility Line Drawn from Record (Type as Shown) ..... W .....  
 Designated Utility Line (Type as Shown) ..... W .....



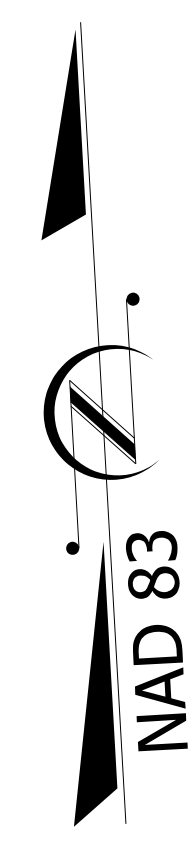
①  
 ROBERT ROSS  
 DB 931 PG 3  
 PLAT A-217 PG 5

①  
 ROBERT ROSS  
 DB 931 PG 3  
 PLAT A-217 PG 5

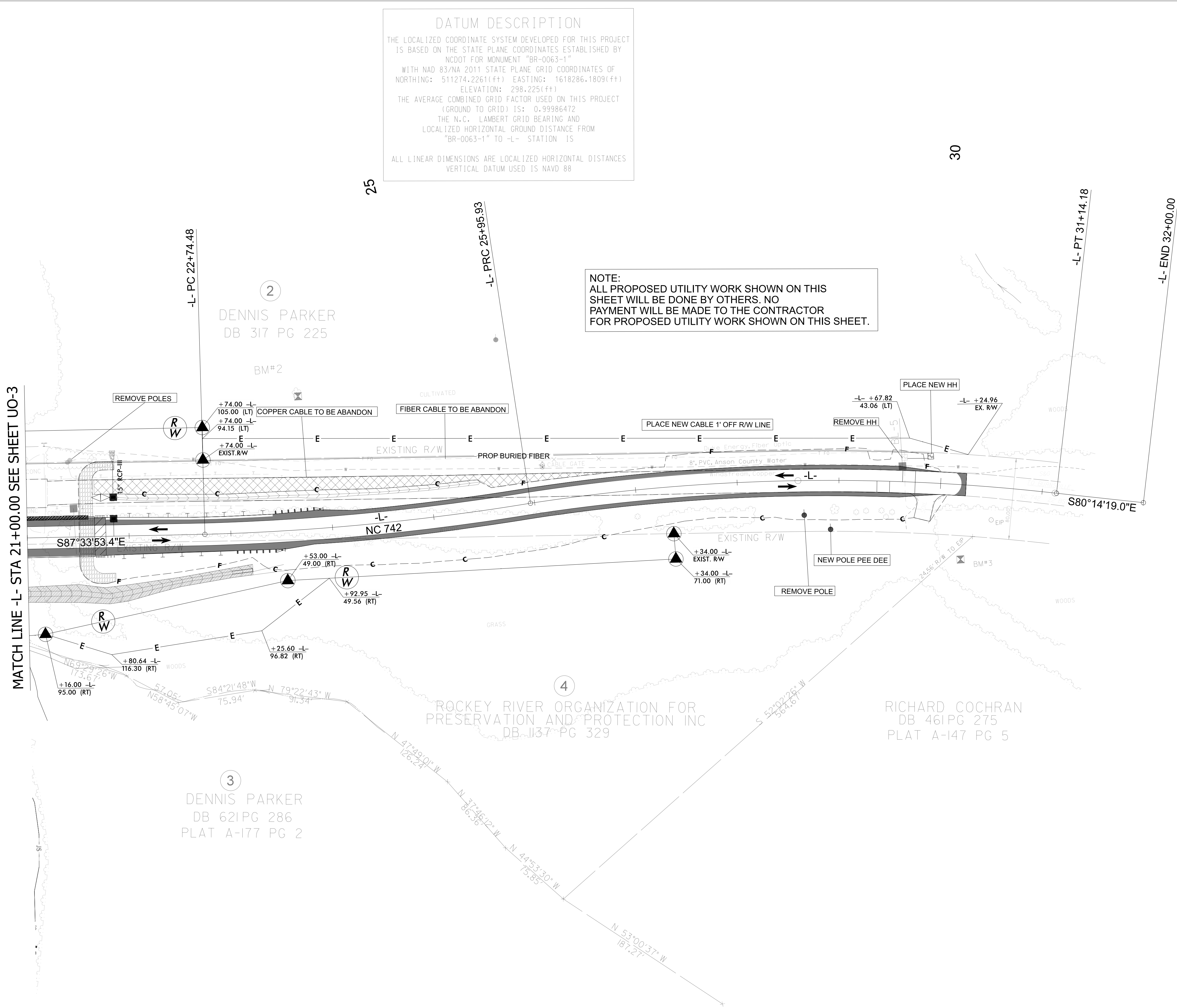
NOTE:  
 ALL PROPOSED UTILITY WORK SHOWN ON THIS SHEET WILL BE DONE BY OTHERS. NO PAYMENT WILL BE MADE TO THE CONTRACTOR FOR PROPOSED UTILITY WORK SHOWN ON THIS SHEET.

REVISIONS

**DATUM DESCRIPTION**  
 THE LOCALIZED COORDINATE SYSTEM DEVELOPED FOR THIS PROJECT IS BASED ON THE STATE PLANE COORDINATES ESTABLISHED BY NCDDOT FOR MONUMENT "BR-0063-1" WITH NAD 83/NA 2011 STATE PLANE GRID COORDINATES OF NORTHING: 511274.2261(ft) EASTING: 1618286.1809(ft) ELEVATION: 298.225(ft)  
 THE AVERAGE COMBINED GRID FACTOR USED ON THIS PROJECT (GROUND TO GRID) IS: 0.99986472  
 THE N.C. LAMBERT GRID BEARING AND LOCALIZED HORIZONTAL GROUND DISTANCE FROM "BR-0063-1" TO -L- STATION IS  
 ALL LINEAR DIMENSIONS ARE LOCALIZED HORIZONTAL DISTANCES  
 VERTICAL DATUM USED IS NAVD 88



**NOTE:**  
 ALL PROPOSED UTILITY WORK SHOWN ON THIS SHEET WILL BE DONE BY OTHERS. NO PAYMENT WILL BE MADE TO THE CONTRACTOR FOR PROPOSED UTILITY WORK SHOWN ON THIS SHEET.



MATCH LINE -L- STA 21+00.00 SEE SHEET UO-3

30

25

REVISIONS