

TIP PROJECT: BR-0063

STATE OF NORTH CAROLINA
DEPARTMENT OF TRANSPORTATION

SIGNING PLAN
ANSON COUNTY

LOCATION: BRIDGE NO. 030087 ON NC-742 OVER RICHARDSON CREEK

ROADWAY STANDARD DRAWING

THE FOLLOWING ROADWAY STANDARDS AS APPEAR IN "ROADWAY STANDARD DRAWINGS" - PROJECT SERVICES UNIT - N.C. DEPARTMENT OF TRANSPORTATION - RALEIGH, N.C., DATED JANUARY 2024 ARE APPLICABLE TO THIS PROJECT AND BY REFERENCE HEREBY ARE CONSIDERED A PART OF THESE PLANS:

STD. NO.	TITLE
904.10	ORIENTATION OF GROUND MOUNTED SIGNS
904.50	MOUNTING OF TYPE 'D', 'E' AND 'F' SIGNS ON 'U' CHANNEL POSTS

SUMMARY OF QUANTITIES

ITEM NO.		ITEM DESCRIPTION	QUANTITY	UNIT
DESC. NO.	SECT. NO.			
4072000000-E	903	SUPPORTS, 3 LB STEEL U-CHANNEL	87	L.F.
4096000000-N	904	SIGN ERECTION, TYPE D	2	EA.
4102000000-N	904	SIGN ERECTION, TYPE E	2	EA.
4155000000-N	907	DISPOSAL OF SIGN SYSTEM, U-CHANNEL	2	EA.

GENERAL NOTES

- . SIGNS FURNISHED BY STATE
- . CONFIRM IN WRITING AT LEAST 4 MONTHS IN ADVANCE, THE ACTUAL DATE THE DEPARTMENT FURNISHED SIGNS WILL BE REQUIRED.
- . ALL TYPE 'D' SIGNS SHALL BE MOUNTED ON TWO U-CHANNEL POSTS UNLESS OTHERWISE INDICATED ON THE PLANS.
- . IF REMOVAL OR RELOCATION OF SIGNS ON PRIVATE STREET (NON-STATE MAINTAINED) IS REQUIRED DUE TO CONSTRUCTION, THE CONTRACTOR SHALL INFORM THE ENGINEER. THE WORK WILL BE COMPLETED BY OTHERS.
- . WHEN NOT STATIONED OR DIMENSIONED ON PLANS, ALL 'E' AND 'F' SIGNS SHALL BE FIELD LOCATED BY THE ENGINEER
- . ALL EXISTING SIGNS ON "U" CHANNEL POST WITHIN THE PROJECT LIMITS SHALL BE REMOVED AND DISPOSED OF UNLESS OTHERWISE NOTED ON PLANS.
- . WHEN EXISTING SIGNS ARE REMOVED AND INSTALLED ON NEW SUPPORTS, THE RE-ERECTION SHALL IMMEDIATELY FOLLOW THE REMOVAL.
- . THE BACKGROUND FOR TYPE E & F SIGNS SHALL BE TYPE C REFLECTIVE SHEETING.
- . SEE ROADWAY PLANS FOR GUARD/GUIDE RAIL DETAILS.

PROJECT NOTES

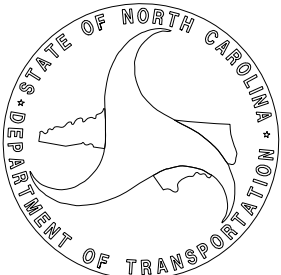
1. DISPOSAL OF SIGN SYSTEM, U CHANNEL

INDEX

SHEET NO.	DESCRIPTION
SIGN-1	TITLE SHEET
SIGN-2	E AND F SHEETS
SIGN-3	SIGN DESIGNS
SIGN-4-5	SIGN DETAIL SHEETS

PLAN SUBMITTED TO: N.C.D.O.T. SIGNING AND DELINEATION UNIT

Kelvin Jordan	SIGNING AND DELINEATION REGIONAL ENGINEER
Ashley Matthews, PE	SIGNING AND DELINEATION PROJECT DESIGN ENGINEER



PLAN PREPARED BY: THIGPEN ENGINEERING

A. Matthew Thigpen, PE President



TIP NO.
BR-0063

SHEET NO.
SIGN-1

APPROVED:

DocuSigned by:
Matthew Thigpen
720228FDD315433

DATE: 10/2/2024

SEAL

DOCUMENT NOT CONSIDERED FINAL
UNLESS ALL SIGNATURES COMPLETED

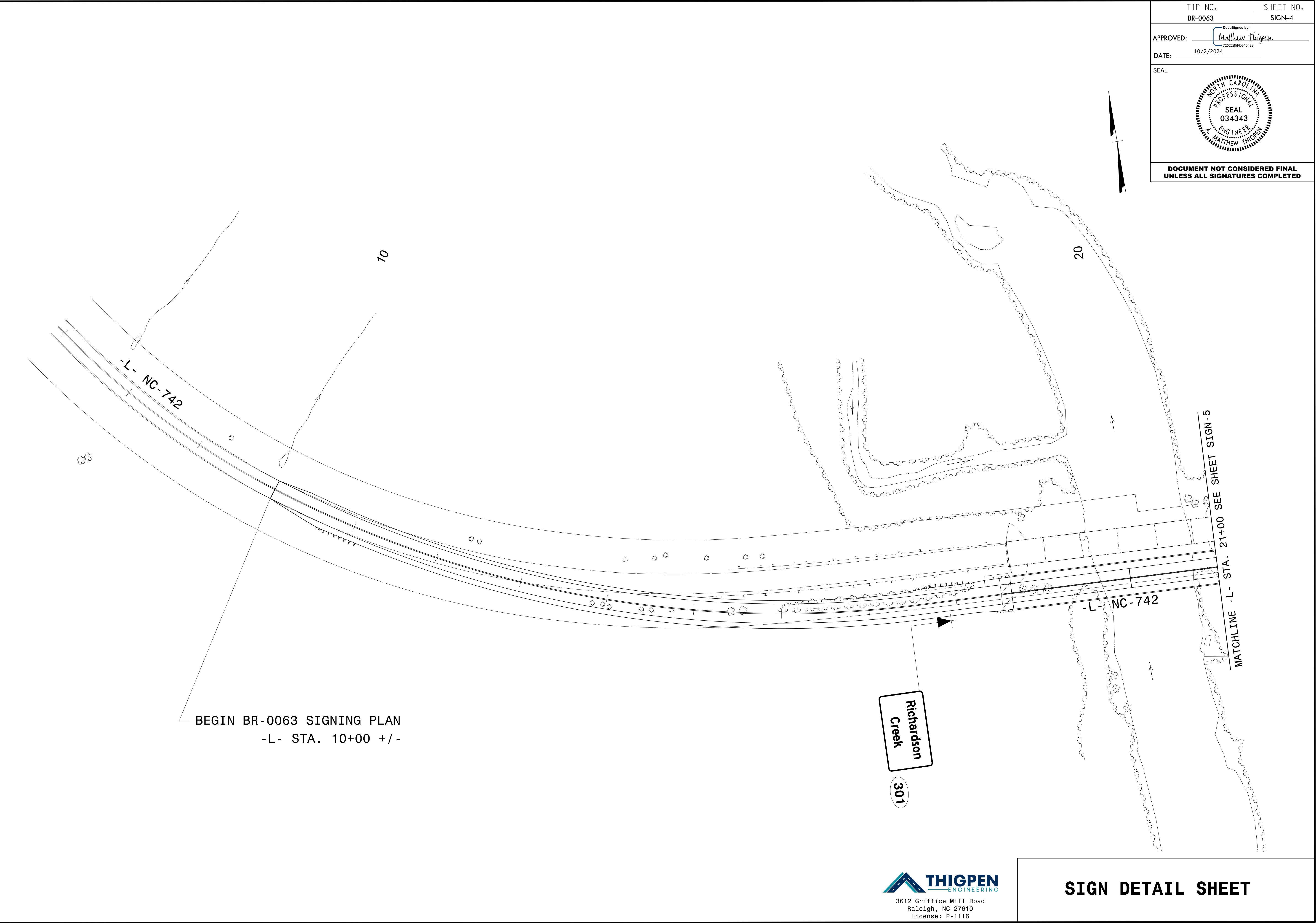
10/2/2024
C:\Users\Matt.Thigpen\OneDrive\Projects\100038_BR-0063\BR-0063\Traffic\Signing\2018_PEF_Engsead-06-21-21.dgn
User:Matt.Thigpen

A circular professional engineer seal for the state of North Carolina. The outer ring contains the text "NORTH CAROLINA" at the top and "A. MATTHEW THIGPEN" at the bottom. The inner ring contains the text "PROFESSIONAL" at the top and "ENGINEER" at the bottom. In the center, the word "SEAL" is positioned above the number "034343".

3612 Griffice Mill Road
Raleigh, NC 27610
License: P-1116

SIGN DESIGNS

TIP NO.	SHEET NO.
BR-0063	SIGN-4
APPROVED: <div>DocuSigned by: Matthew Thigpen 7202288FD315433</div>	
DATE: 10/2/2024	
SEAL	
<div>SEAL 034343 ENGINEER MATTHEW THIGPEN</div>	
DOCUMENT NOT CONSIDERED FINAL UNLESS ALL SIGNATURES COMPLETED	

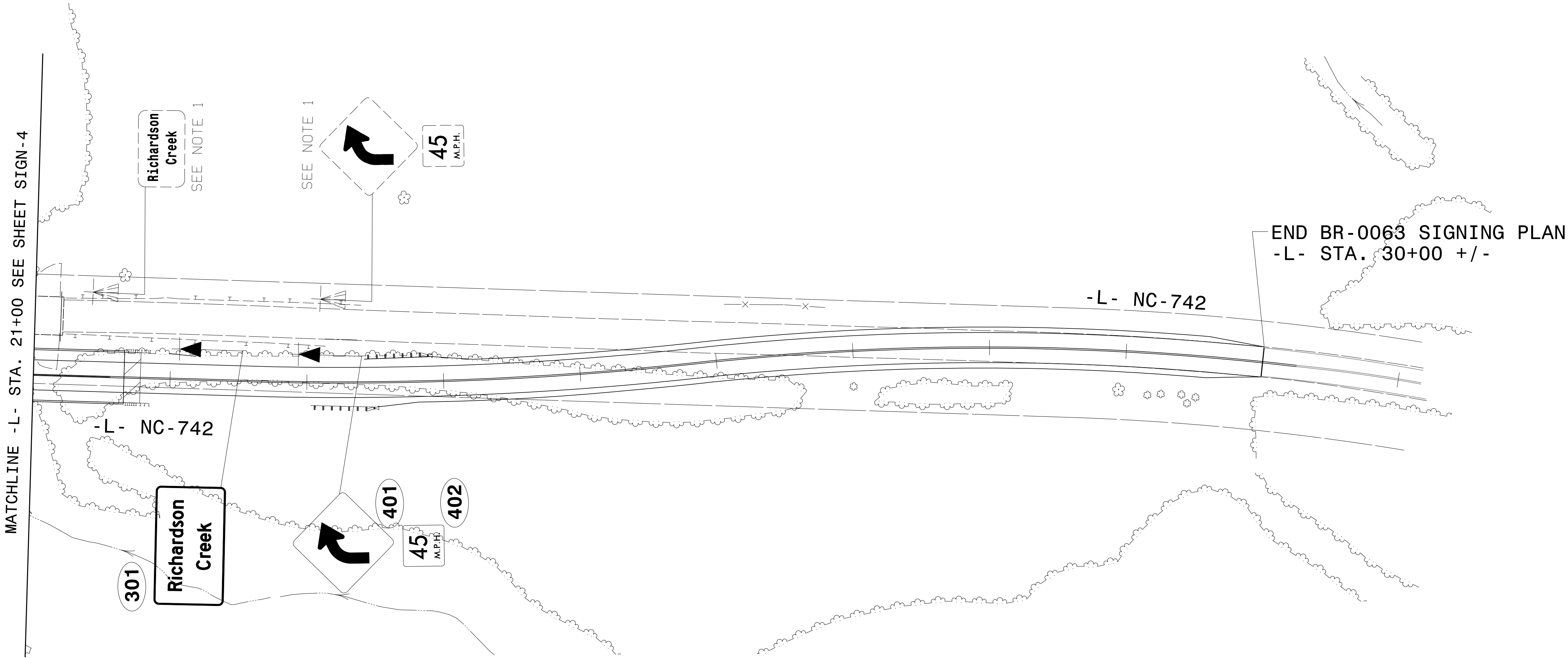


SIGN DETAIL SHEET

TIP NO.	SHEET NO.
BR-0063	SIGN-5
APPROVED: <div>DocuSigned by: <i>Matthew Thigpen</i> 7202289FD315453</div>	
DATE: 10/2/2024	
SEAL	
<div>SEAL 034343 ENGINEER MATTHEW THIGPEN</div>	
DOCUMENT NOT CONSIDERED FINAL UNLESS ALL SIGNATURES COMPLETED	



30



10/2/2024
C:\Users\Matt Thigpen\OneDrive\Projects\100038_BR-0063\Traffic\Signing\BR0063.tc.tmp05.dgn
User:Matt Thigpen