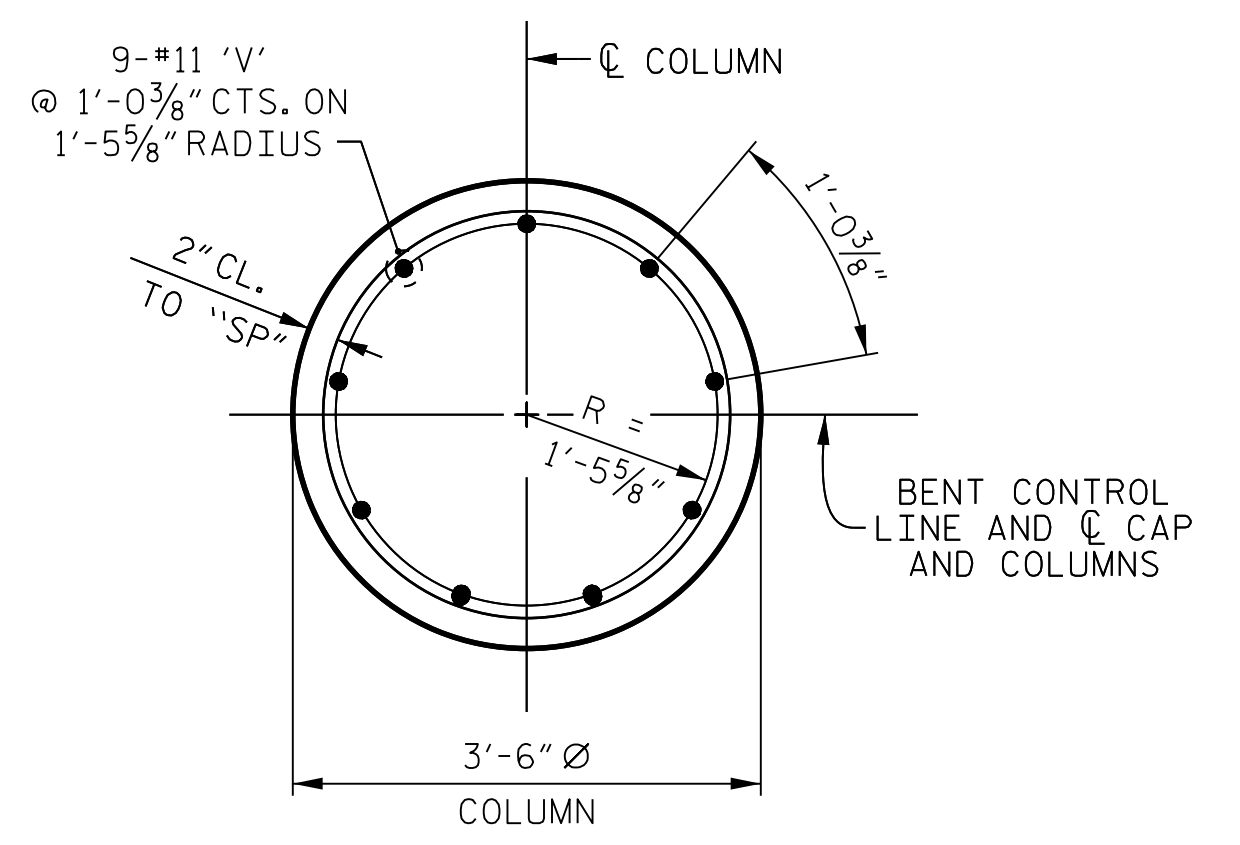
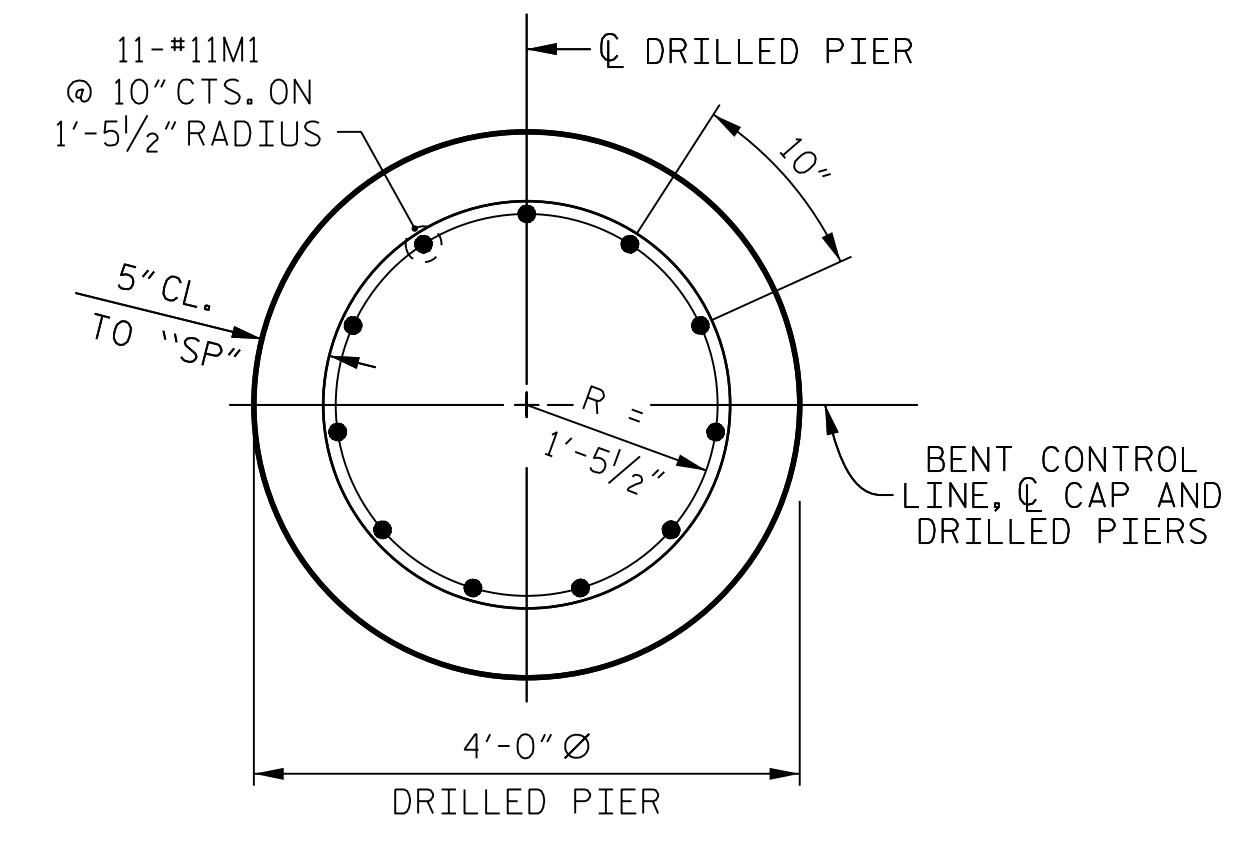
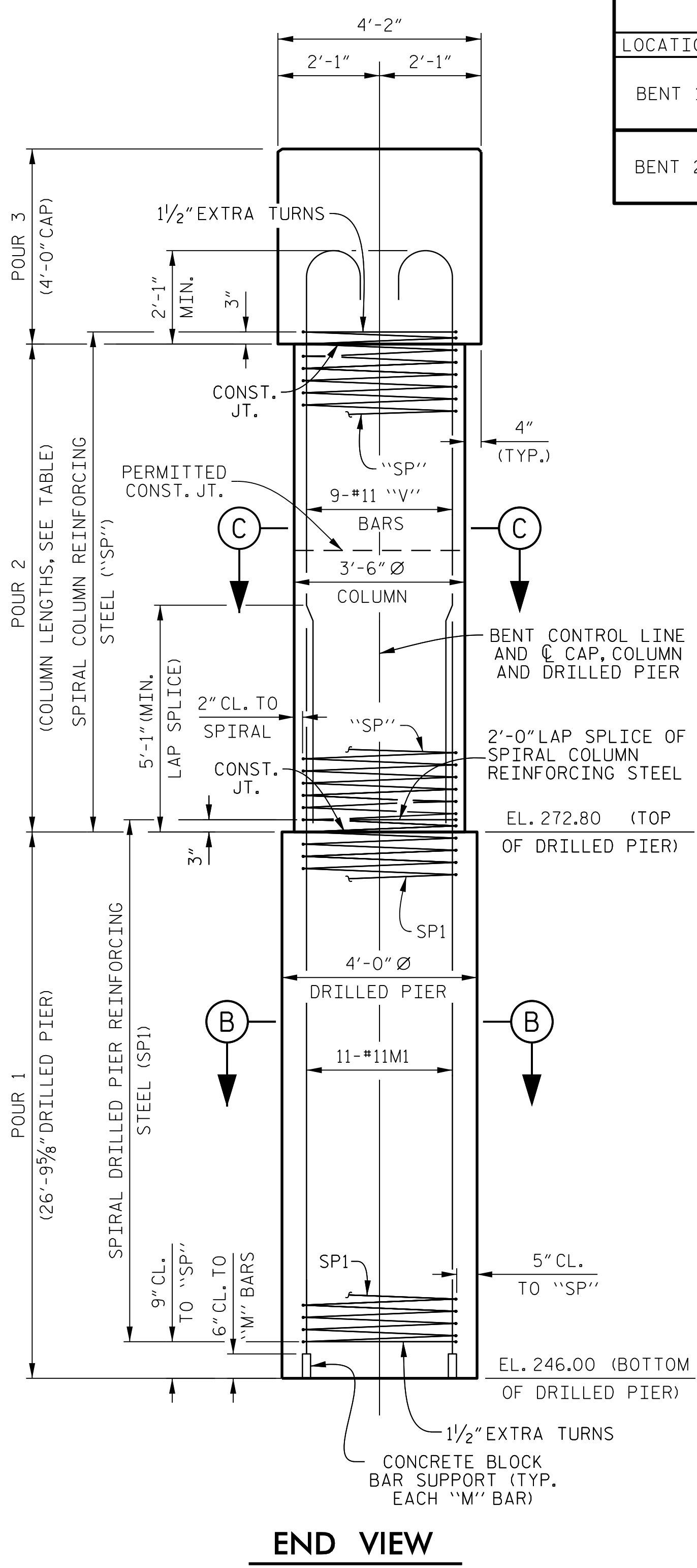
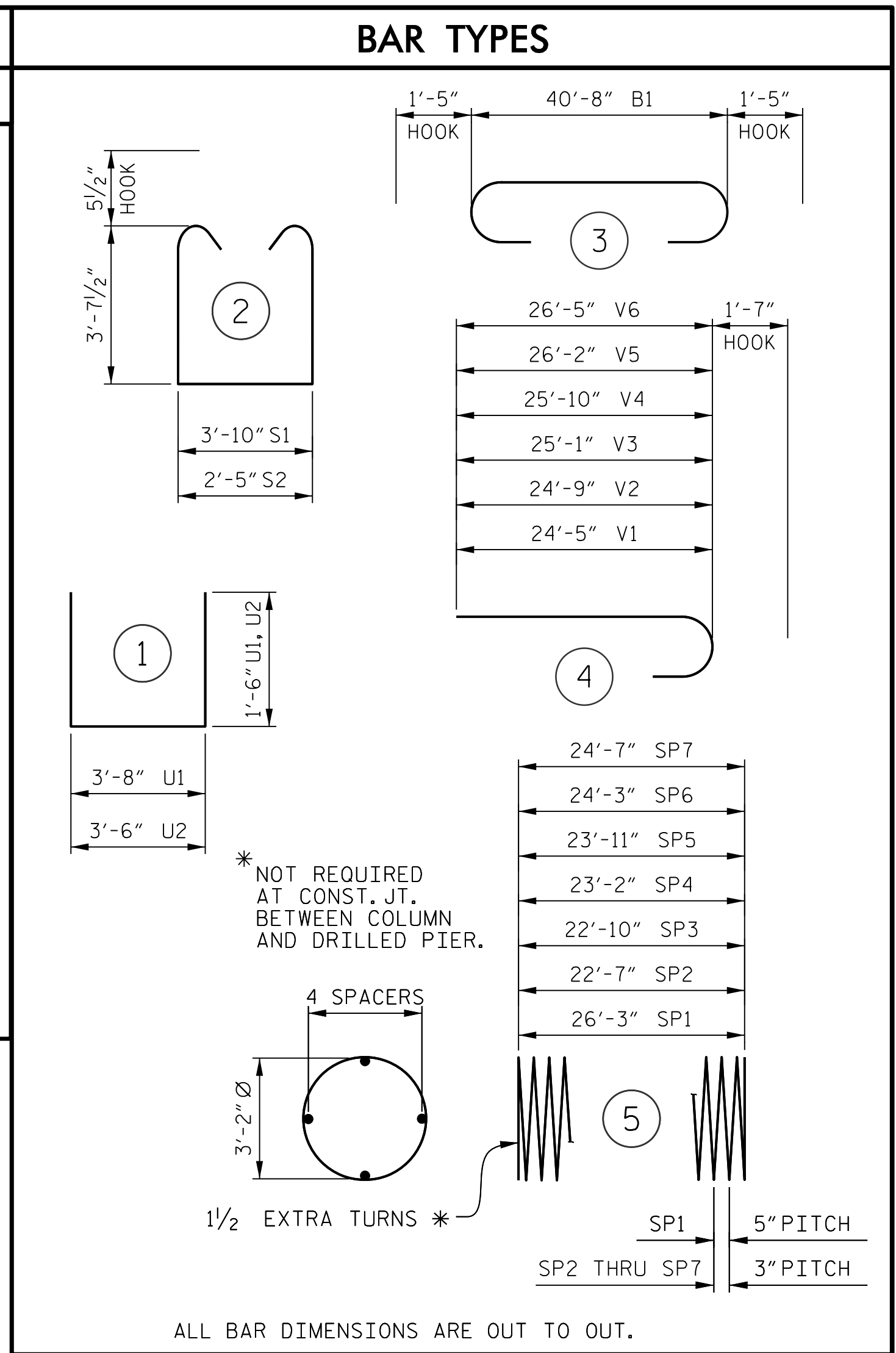


TABLE OF COLUMN REINFORCING				COLUMN LENGTH
LOCATION	COLUMN	SPIRAL	"V" BAR	
BENT 1	1	SP2	V1	22'-3 1/2"
	2	SP3	V2	22'-7 1/4"
	3	SP4	V3	22'-11"
BENT 2	1	SP5	V4	23'-8 1/4"
	2	SP6	V5	24'-0"
	3	SP7	V6	24'-3 3/4"

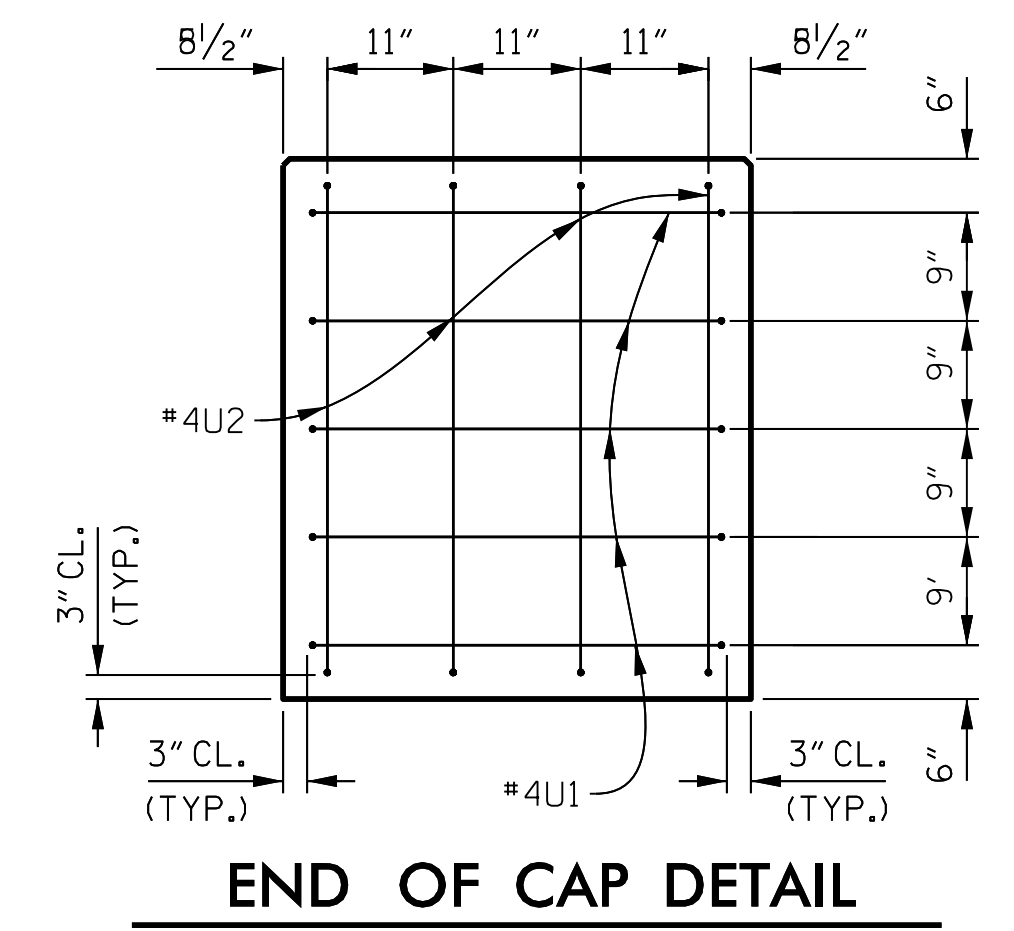
BILL OF MATERIAL					
BENT 1			BENT 2		
BAR No.	SIZE	TYPE	LENGTH	WEIGHT	
B1	12	#10	3	43'-6"	2,246
B2	4	#10	STR	40'-8"	700
B3	16	#4	STR	21'-3"	227
D1	52	#8	STR	2'-3"	312
M1	33	#11	STR	34'-4"	6,020
S1	14	#5	2	12'-0"	175
S2	80	#5	2	10'-7"	883
U1	10	#4	1	6'-8"	45
U2	8	#4	1	6'-6"	35
V1	9	#11	4	26'-0"	1,243
V2	9	#11	4	26'-4"	1,259
V3	9	#11	4	26'-8"	1,275
REINFORCING STEEL				14,420	LBS.
SP1	3	**	5	631'-9"	1,977
SP2	1	***	5	918'-3"	613
SP3	1	***	5	928'-1"	620
SP4	1	***	5	940'-4"	628
SPIRAL COLUMN REINFORCING STEEL				3,838	LBS.
CLASS "A" CONCRETE					
POUR 3	CAP			25.3	CU. YDS.
POUR 2	COLUMNS			24.2	CU. YDS.
TOTAL				49.5	CU. YDS.
DRILLED PIER CONCRETE				37.4	CU. YDS.



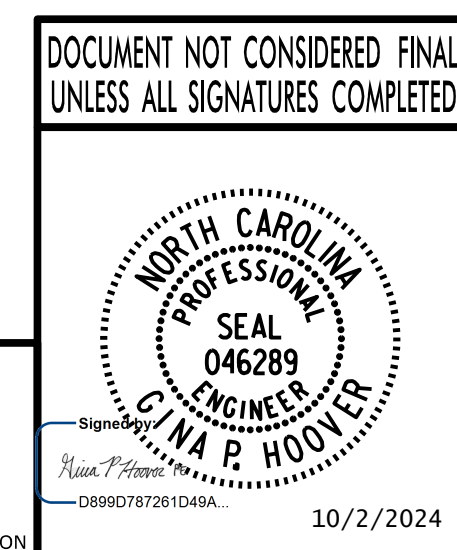
*** THE SP2 THRU SP7 SPIRAL REINFORCING STEEL SHALL BE W20 OR D-20 COLD DRAWN WIRE OR #4 PLAIN OR DEFORMED BAR.

** THE SP1 SPIRAL REINFORCING STEEL SHALL BE W31 OR D-31 COLD DRAWN WIRE OR #5 PLAIN OR DEFORMED BAR.

ALL STEEL IN THE DRILLED PIERS IS INCLUDED IN THE PAY ITEMS FOR "REINFORCING STEEL" AND "SPIRAL COLUMN REINFORCING STEEL".



PROJECT NO. BR-0063
 ANSON COUNTY
 STATION: 20+15.00 -L-
 SHEET 2 OF 2



STATE OF NORTH CAROLINA
 DEPARTMENT OF TRANSPORTATION
 RALEIGH
 SUBSTRUCTURE
 INTERIOR BENT DETAILS
 AND BILL OF MATERIALS

REVISIONS						SHEET No.
No.	BY:	DATE:	No.	BY:	DATE:	
1			3			TOTAL SHEETS
2			4			19

DRAWN BY: K. E. LOFTON DATE: 7-22
 CHECKED BY: G. P. HOOVER DATE: 9-23
 ENGINEER OF RECORD: G. P. HOOVER DATE: 9-23

