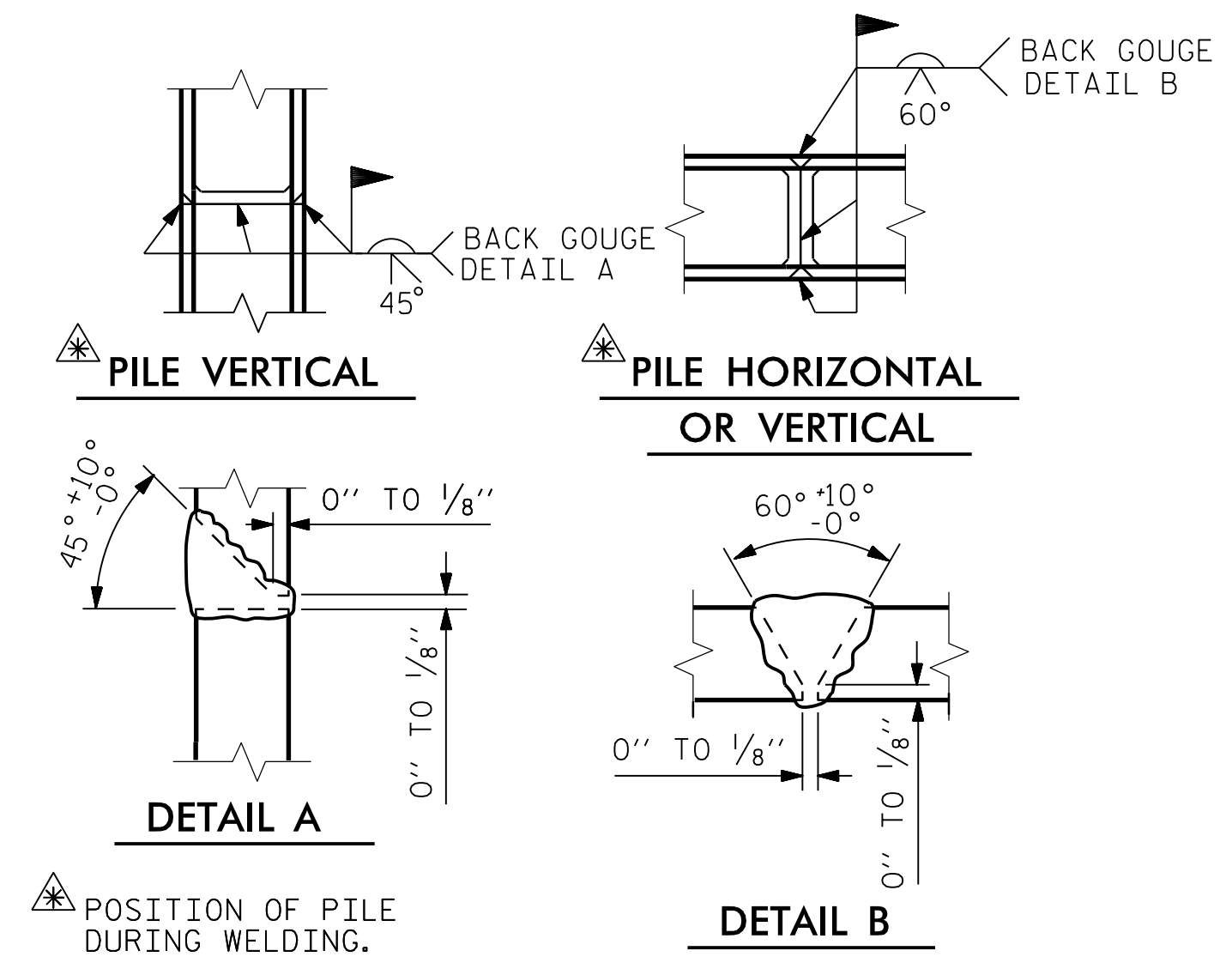


BAGGED STONE AND PIPE SHALL BE PLACED IMMEDIATELY AFTER COMPLETION OF END BENT EXCAVATION. PIPE MAY BE EITHER CONCRETE, CORRUGATED STEEL, CORRUGATED ALUMINUM ALLOY, OR CORRUGATED PLASTIC. PERFORATED PIPE WILL NOT BE ALLOWED.

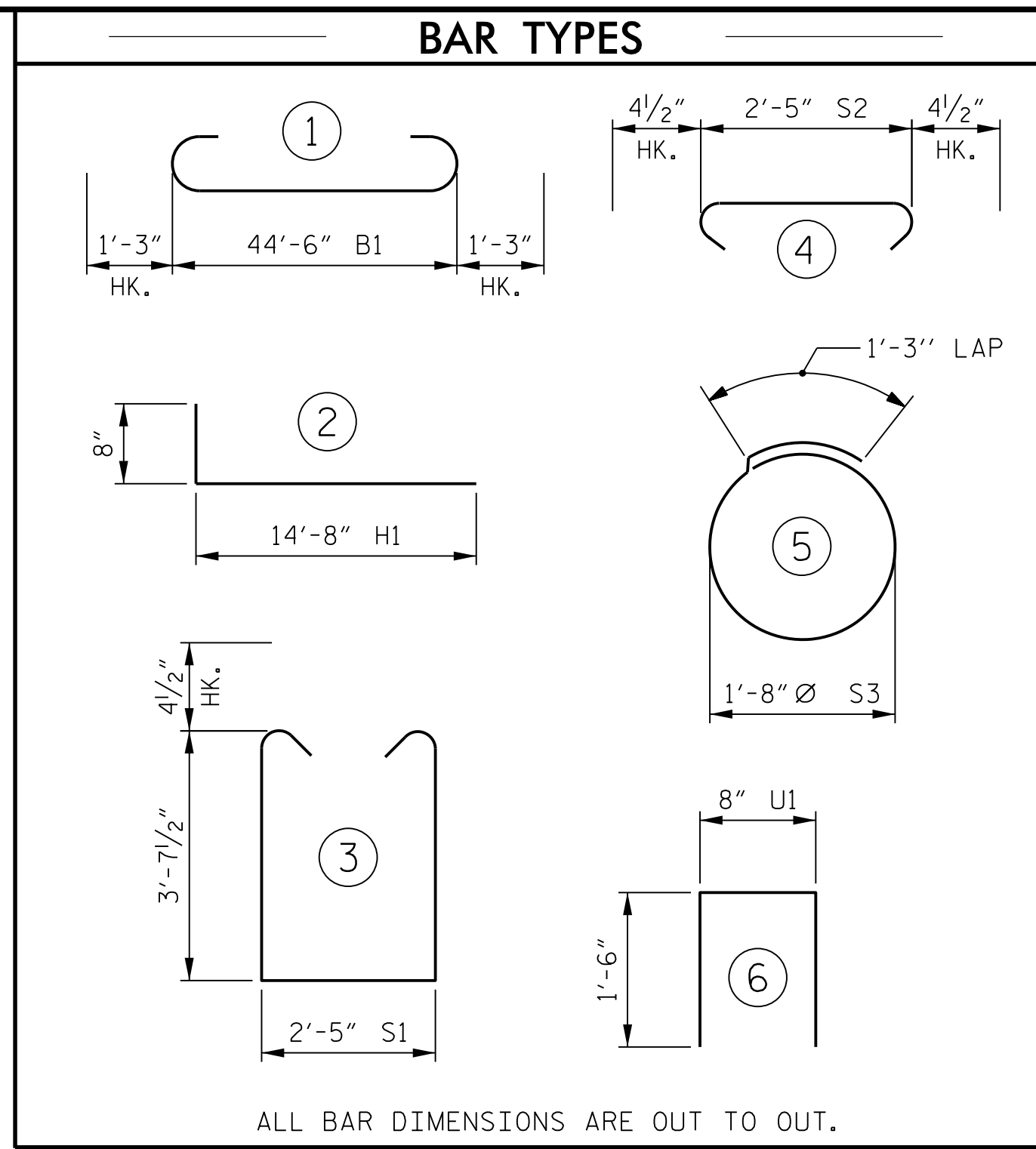
BAGGED STONE SHALL REMAIN IN PLACE UNTIL THE ENGINEER DIRECTS THAT IT BE REMOVED. THE CONTRACTOR SHALL REMOVE AND DISPOSE OF SILT ACCUMULATIONS AT BAGGED STONE WHEN SO DIRECTED BY THE ENGINEER. BAGS SHALL BE REMOVED AND REPLACED WHENEVER THE ENGINEER DETERMINES THAT THEY HAVE DETERIORATED AND LOST THEIR EFFECTIVENESS.

NO SEPARATE PAYMENT WILL BE MADE FOR THIS WORK AND THE ENTIRE COST OF THIS WORK SHALL BE INCLUDED IN THE UNIT CONTRACT PRICE BID FOR THE SEVERAL PAY ITEMS.

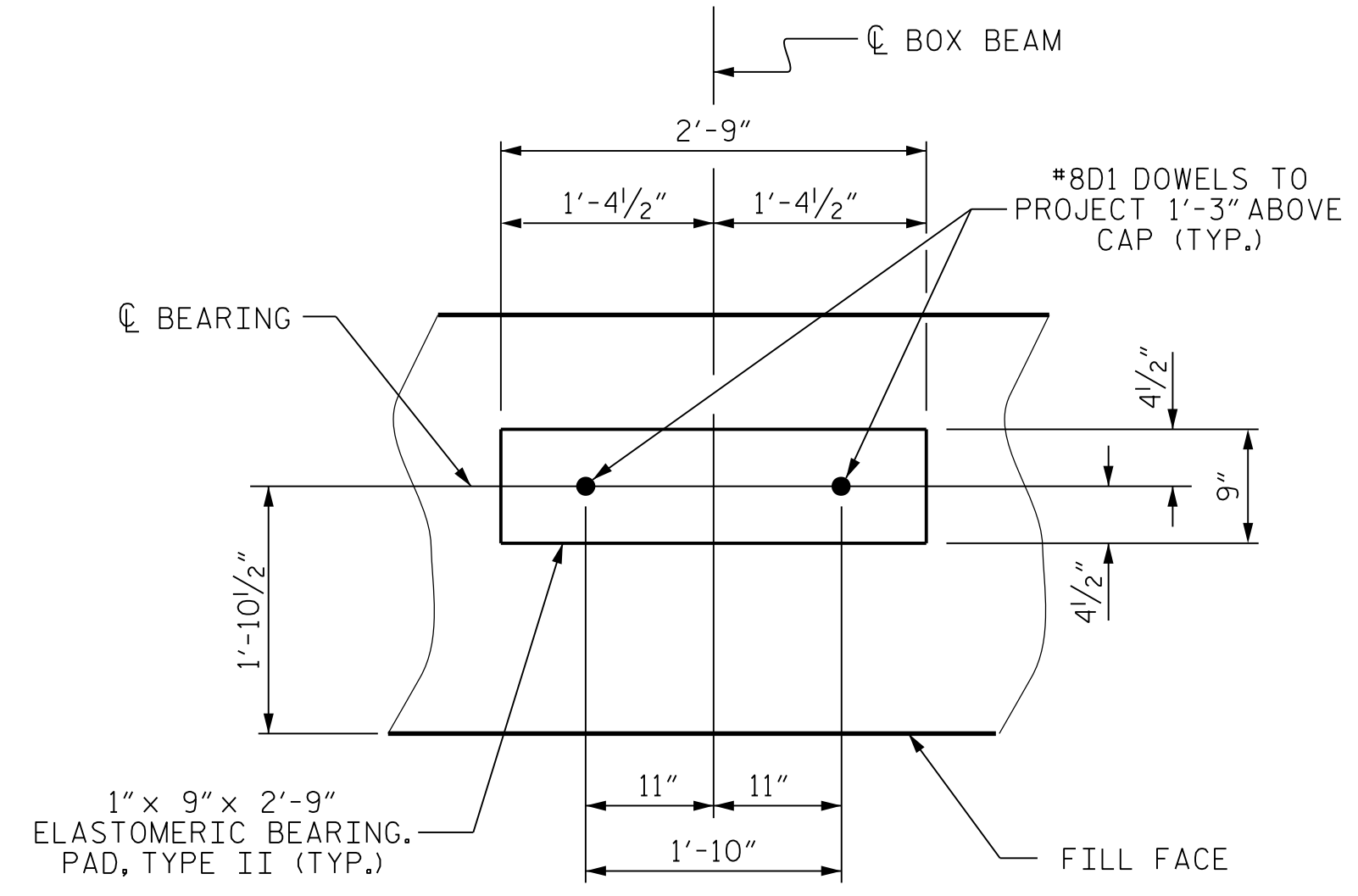
**TEMPORARY DRAINAGE AT END BENT**



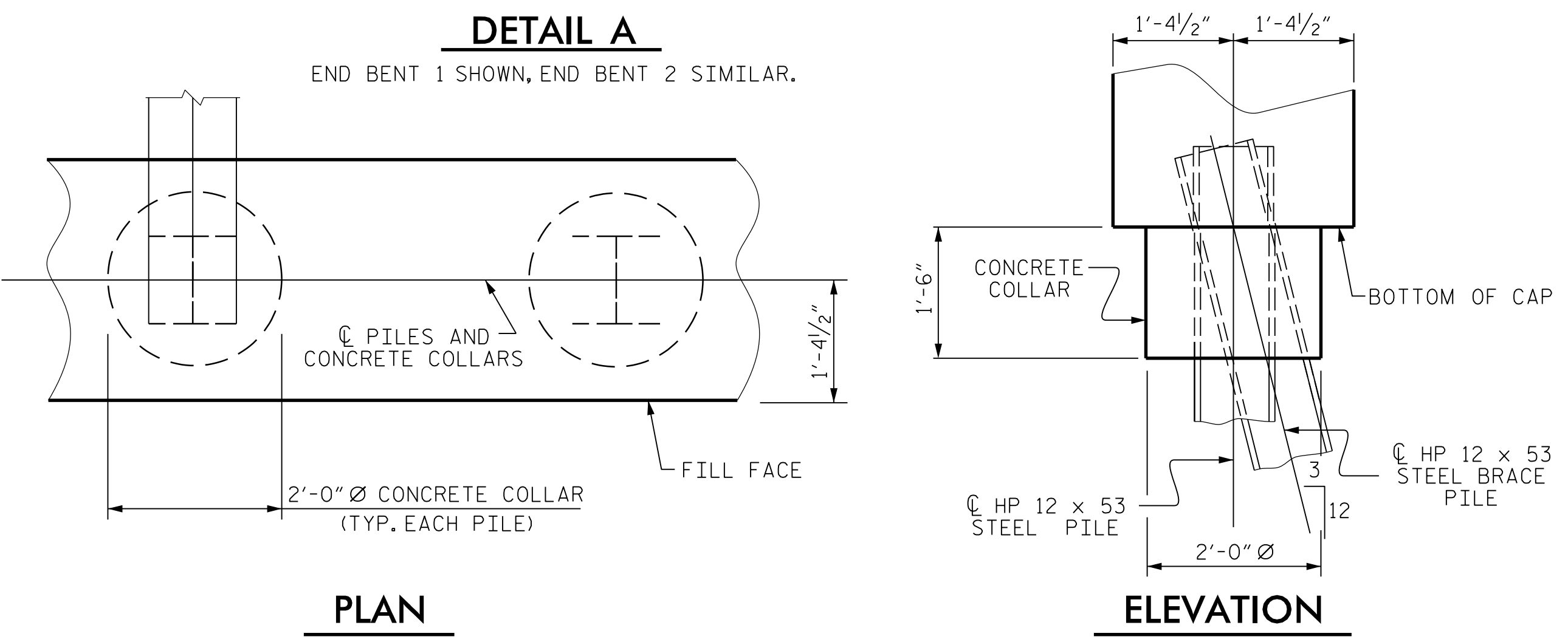
**PILE SPICE DETAILS**



BILL OF MATERIAL FOR ONE END BENT					
BAR No.	SIZE	TYPE	LENGTH	WEIGHT	
B1	#9	1	47'-0"	1,278	
B2	#4	STR	23'-7"	441	
B3	#4	STR	2'-5"	19	
D1	#8	STR	2'-3"	156	
H1	#5	2	15'-4"	1,024	
K1	#4	STR	2'-11"	23	
K2	#4	STR	23'-7"	189	
S1	#4	3	10'-5"	390	
S2	#4	4	3'-2"	118	
S3	#4	5	6'-6"	122	
U1	#4	6	3'-8"	96	
V1	#4	STR	7'-8"	389	
V2	#4	STR	5'-9"	300	
REINFORCING STEEL (FOR ONE END BENT)				4,545	LBS.
CLASS A CONCRETE BREAKDOWN (FOR ONE END BENT)					
POUR 1	CAP, LOWER PART OF WINGS AND CONCRETE COLLARS			23.7	C.Y.
POUR 2	BACKWALL AND UPPER PART OF WINGS			8.7	C.Y.
TOTAL CLASS A CONCRETE				31.8	C.Y.

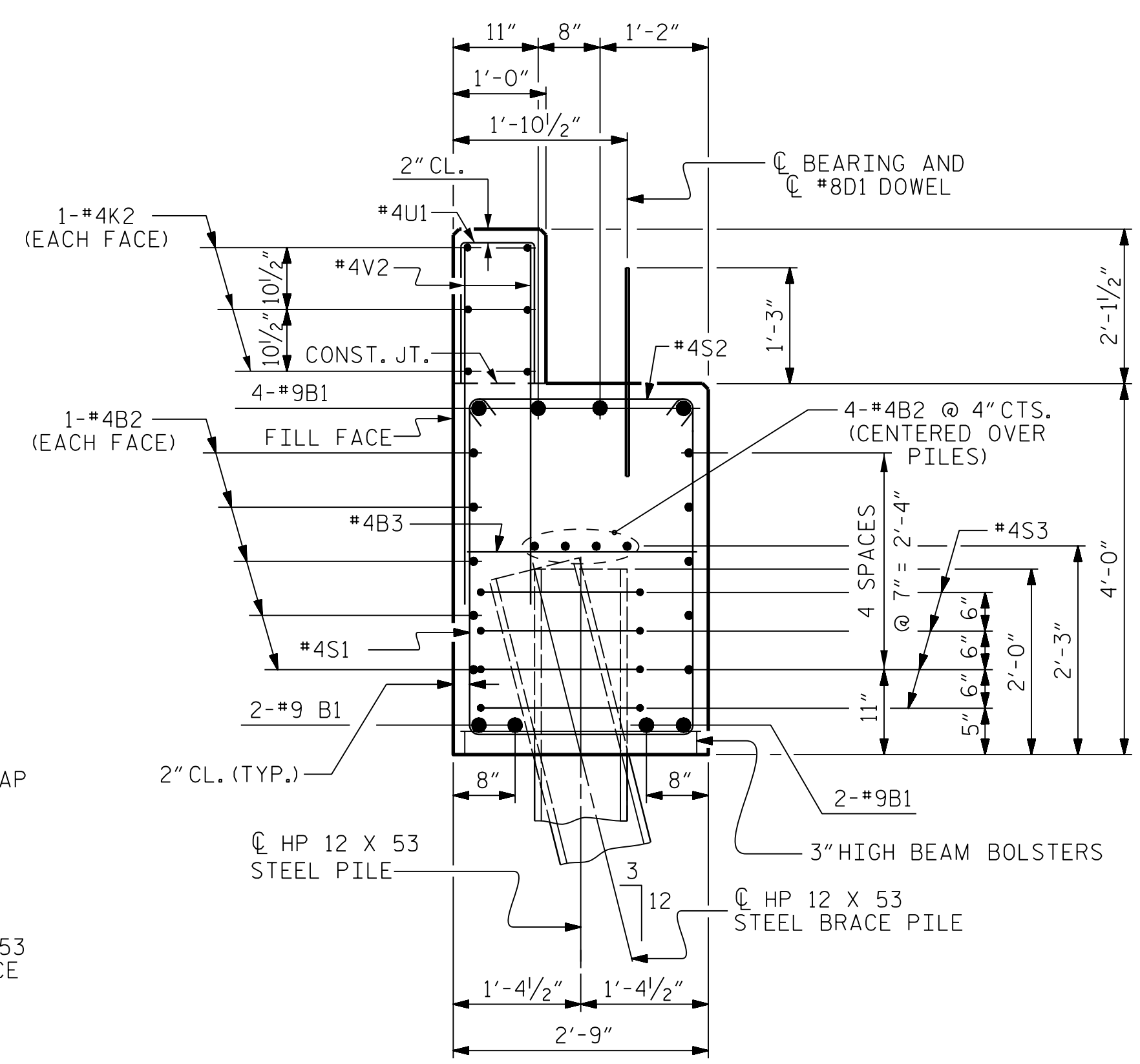


**DETAIL A**  
END BENT 1 SHOWN, END BENT 2 SIMILAR.



**CORROSION PROTECTION FOR STEEL PILES DETAIL**

END BENT 1 SHOWN, END BENT 2 SIMILAR.



**SECTION A-A**

(CONCRETE COLLAR NOT SHOWN, SEE "CORROSION PROTECTION FOR STEEL PILES DETAIL.")

PROJECT NO. **BR-0063**  
**ANSON** COUNTY  
 STATION: **20+15.00 -L-**

STATE OF NORTH CAROLINA  
 DEPARTMENT OF TRANSPORTATION  
 RALEIGH

**SUBSTRUCTURE**

**END BENT DETAILS**

DOCUMENT NOT CONSIDERED FINAL UNLESS ALL SIGNATURES COMPLETED

**NORTH CAROLINA PROFESSIONAL ENGINEER SEAL 046289**  
**G. P. HOOVER**  
 0896078261049A

PLANS PREPARED BY:  
**ARCADIS**  
 175 REGENCY WOOD PLACE, SUITE 400  
 CARY, NORTH CAROLINA 27518  
 NC LICENSE No. 0486277

DRAWN BY: **K. E. LOFTON** DATE: **6-22**  
 CHECKED BY: **G. P. HOOVER** DATE: **9-23**  
 ENGINEER OF RECORD: **G. P. HOOVER** DATE: **9-23**

REVISIONS						SHEET No.
No.	BY:	DATE:	No.	BY:	DATE:	TOTAL SHEETS
1			3			19
2			4			

FILE: c:\p\work\arcadis\p01\gina.hoover\dm89249\BR-0063\_Div\_10\_0030087\_ssm\_eb124.dgn  
 DATE: 9/2/2024 10:04:57 AM