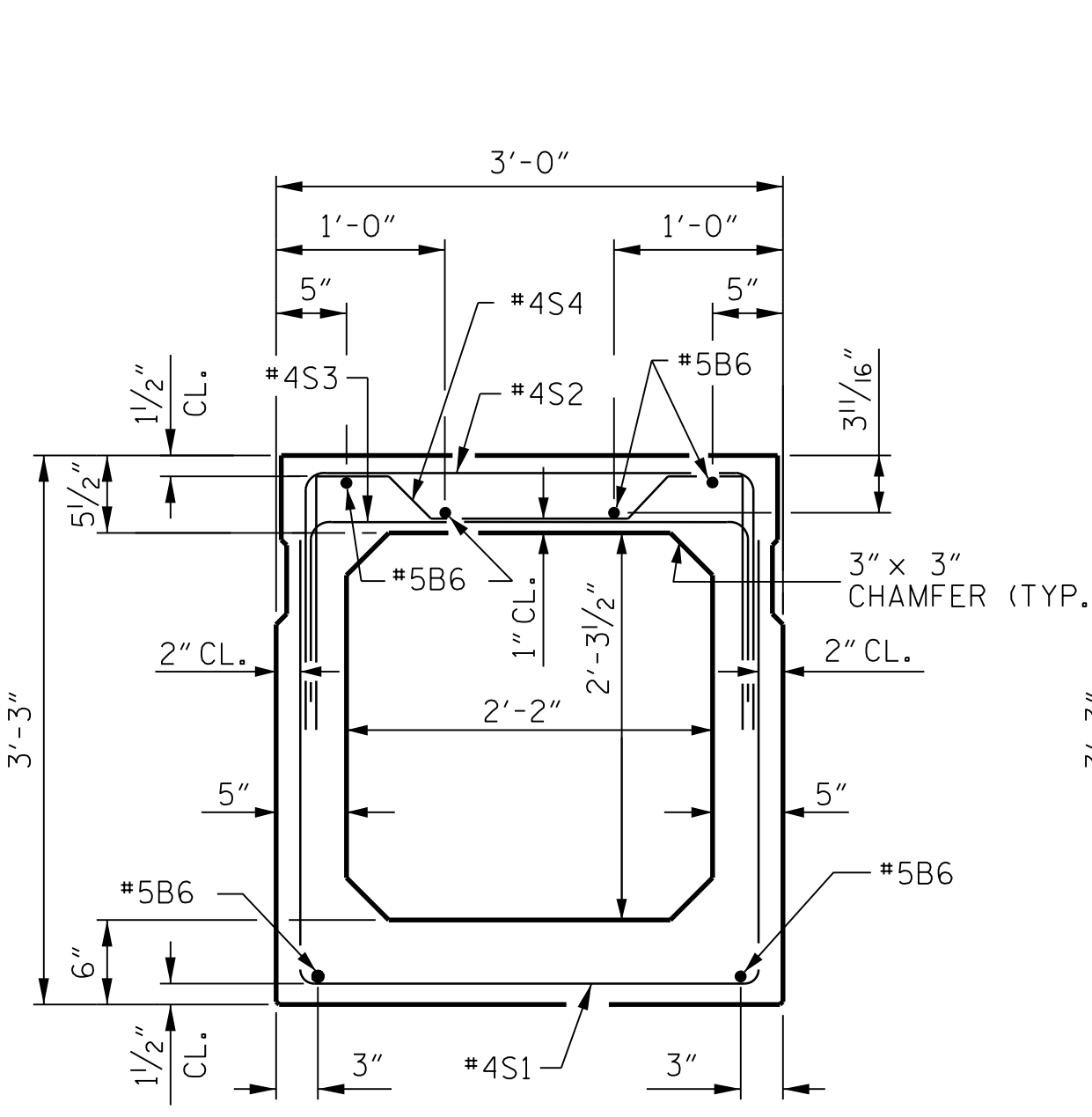


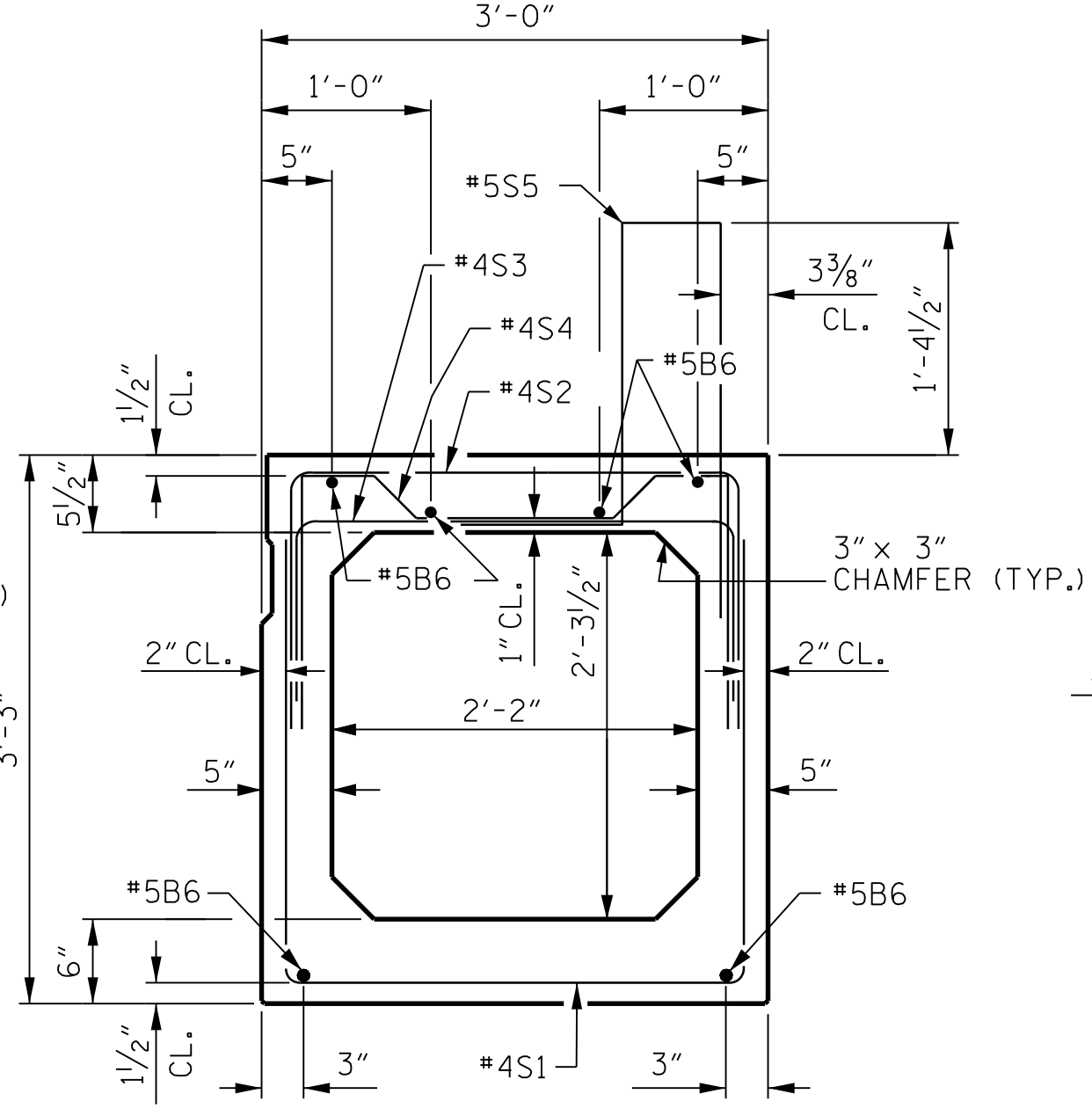
END ELEVATION

SHOWING PLACEMENT OF #5 AND #4 "A" BARS AND LOCATION OF DOWEL HOLES. (INTERIOR BOX BEAM SECTION SHOWN, EXTERIOR SECTION SIMILAR EXCEPT SHEAR KEY LOCATION. STRAND LAYOUT NOT SHOWN.)



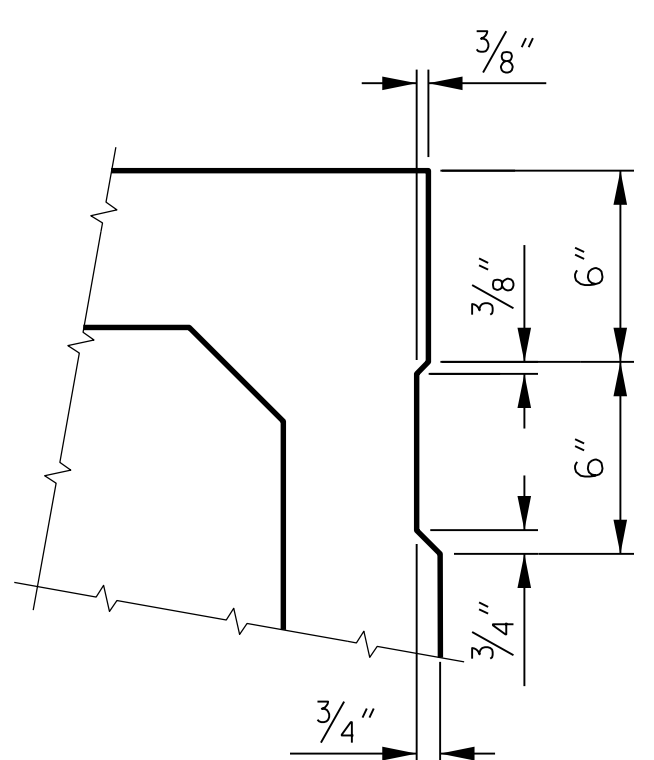
INTERIOR BOX BEAM SECTION

(STRAND LAYOUT NOT SHOWN)



EXTERIOR BOX BEAM SECTION

(STRAND LAYOUT NOT SHOWN)



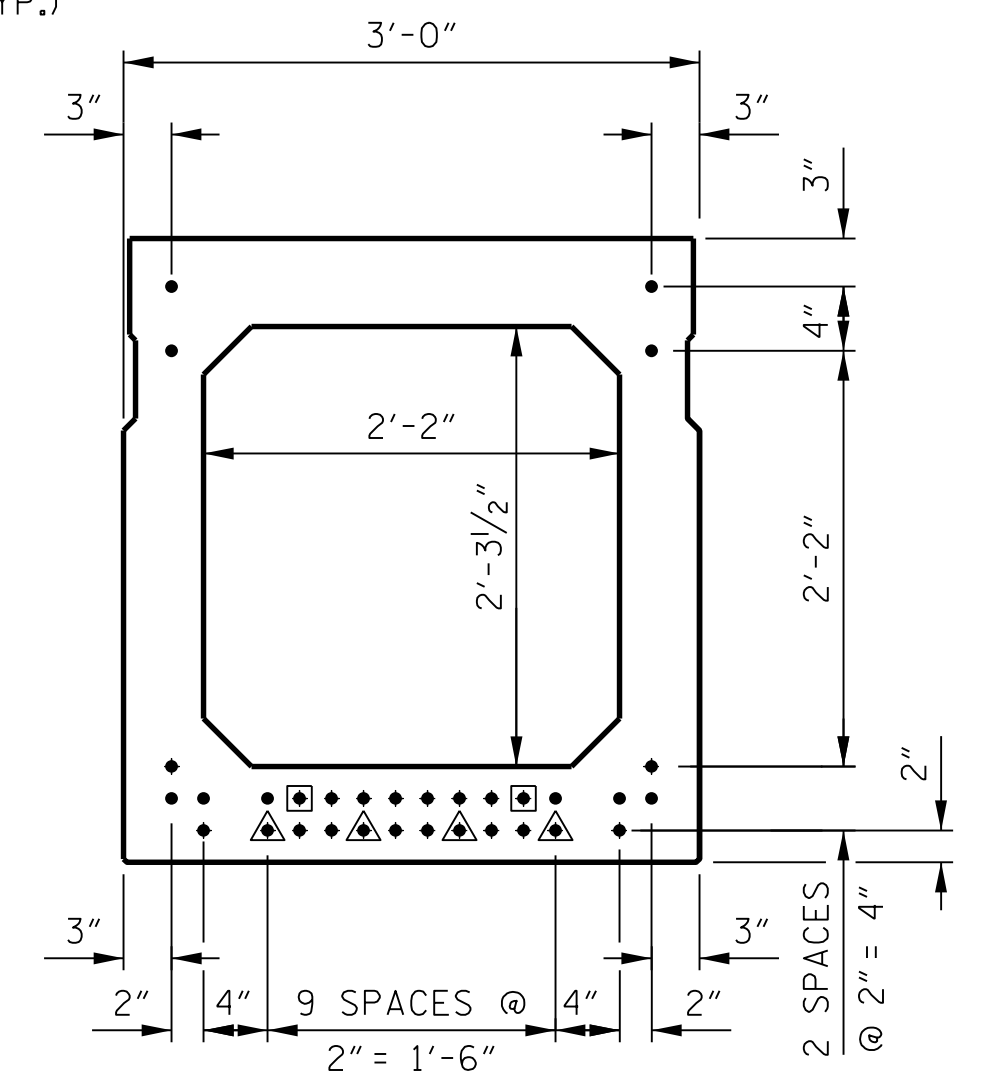
SHEAR KEY DETAIL

NOTE: OMIT SHEAR KEY ON OUTSIDE FACE OF EXTERIOR BOX BEAM UNITS.

DEBONDING LEGEND

- FULLY BONDED STRANDS
- STRANDS DEBONDED FOR 4'-0" FROM END OF GIRDER
- STRANDS DEBONDED FOR 12'-0" FROM END OF GIRDER

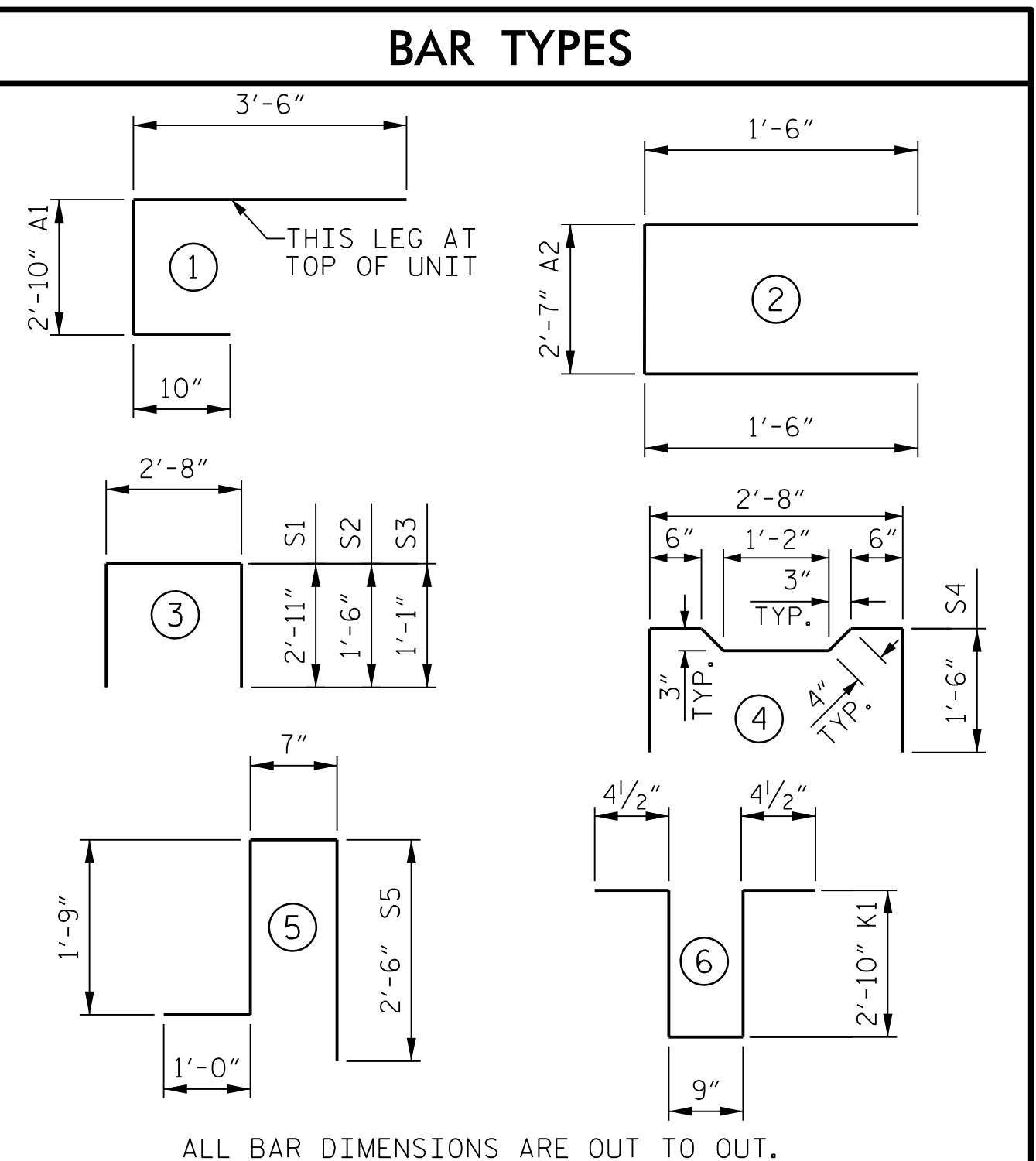
BOND SHALL BE BROKEN ON STRANDS AS SHOWN FOR THE SPECIFIED LENGTH FROM EACH END OF THE BOX BEAM. SEE STANDARD SPECIFICATIONS ARTICLE 1078-7.



TYPICAL STRAND LOCATION

32 - 0.6" Ø LOW RELAXATION STRAND LAYOUT

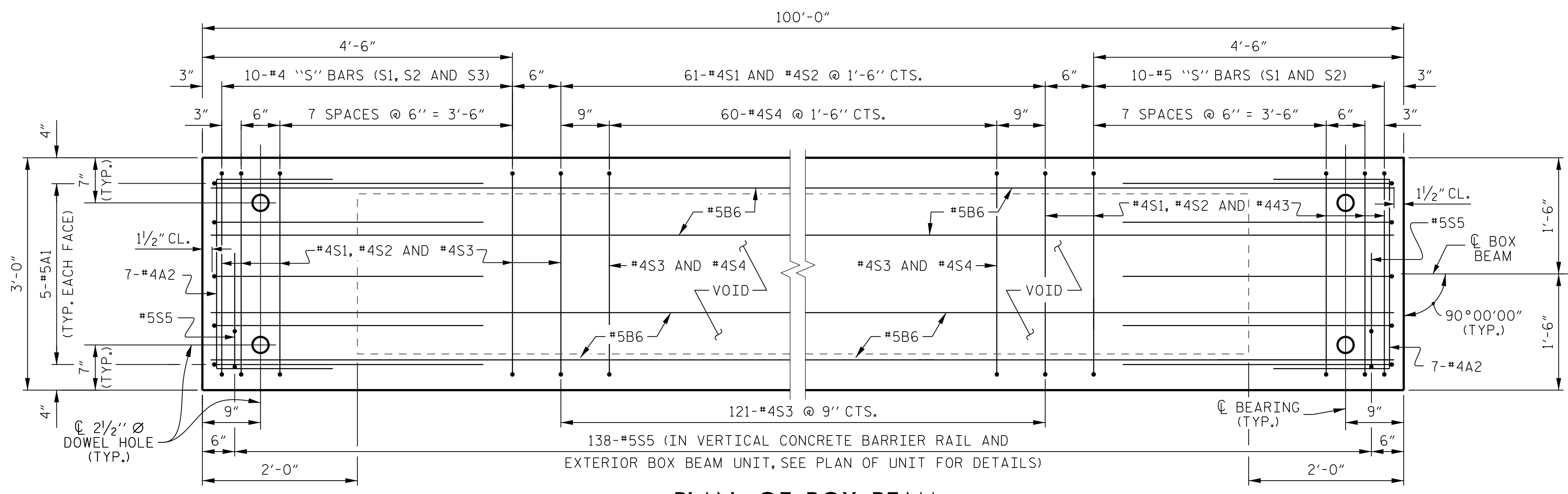
GRADE 270 STRANDS	
	0.6" Ø L.R.
AREA (SQUARE INCHES)	0.217
ULTIMATE STRENGTH (LBS. PER STRAND)	58,600
APPLIED PRESTRESS (LBS. PER STRAND)	43,950



ALL BAR DIMENSIONS ARE OUT TO OUT.

BILL OF MATERIAL FOR ONE BOX BEAM SECTION

BAR	NUMBER	SIZE	TYPE	EXTERIOR UNIT LENGTH	EXTERIOR UNIT WEIGHT	INTERIOR UNIT LENGTH	INTERIOR UNIT WEIGHT
A1	10	#5	1	7'-2"	75	7'-2"	75
A2	44	#4	2	5'-7"	164	5'-7"	164
B6	12	#5	STR	50'-11"	637	50'-11"	637
K1	15	#4	6	7'-2"	72	7'-2"	72
K2	10	#4	STR	2'-7"	17	2'-7"	17
S1	81	#4	3	78'-6"	460	8'-6"	460
S2	81	#4	3	5'-8"	307	5'-8"	307
S3	141	#4	3	4'-10"	455	4'-10"	455
S4	60	#4	4	5'-10"	237	5'-10"	234
*S5	138	#4	4	5'-10"	840	--	--
REINFORCING STEEL				2,421 LBS.		2,421 LBS.	
* EPOXY COATED REINFORCING STEEL				840 LBS.		--	
9000 P.S.I. CONCRETE				19.6 CU. YDS.		19.4 CU. YDS.	
0.6" Ø L.R. STRANDS				No. = 32		No. = 32	



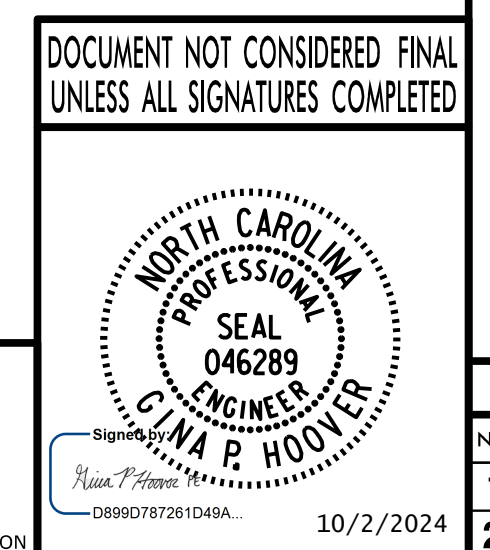
PLAN OF BOX BEAM

(STRAND LAYOUT NOT SHOWN)

NOTES

EXTERIOR UNIT SHOWN, INTERIOR UNIT SIMILAR EXCEPT OMIT #5S5 BARS.
 FOR LOCATION OF DIAPHRAGMS, SEE "PLAN OF UNIT", SHEET 2 OF 5.
 FOR THREADED INSERTS, SEE "THREADED INSERT DETAIL", SHEET 1 OF 5.
 FOR REINFORCING STEEL IN DIAPHRAGMS, SEE "DOUBLE DIAPHRAGM DETAILS", SHEET 4 OF 5.

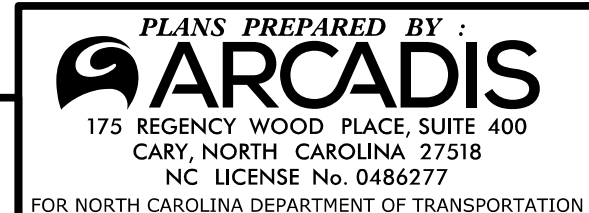
PROJECT NO. **BR-0063**
ANSON COUNTY
 STATION: **20+15.00 -L-**
 SHEET 3 OF 5



STATE OF NORTH CAROLINA
 DEPARTMENT OF TRANSPORTATION
 RALEIGH
STANDARD
3'-0" x 3'-3"
PRESTRESSED CONCRETE
BOX BEAM UNIT
90° SKEW

ASSEMBLED BY : K. E. LOFTON	DATE : 6-22
CHECKED BY : G. P. HOOVER	DATE : 9-23
DRAWN BY : DGE	11/11
CHECKED BY : TMG	11/11
REV. 9/14	MAA/TMG

DRAWN BY : K. E. LOFTON	DATE : 6-22
CHECKED BY : G. P. HOOVER	DATE : 9-23
ENGINEER OF RECORD : G. P. HOOVER	DATE : 9-23



REVISIONS			SHEET No.		
No.	BY:	DATE:	No.	BY:	DATE:
1			3		
2			4		
					TOTAL SHEETS
					19