



BR-0063
 EC 007
 NORTH CAROLINA
 DEPARTMENT OF TRANSPORTATION
 ANSON COUNTY



ROADWAY DESIGN UNIT
 ROADWAY DESIGN ENGINEER

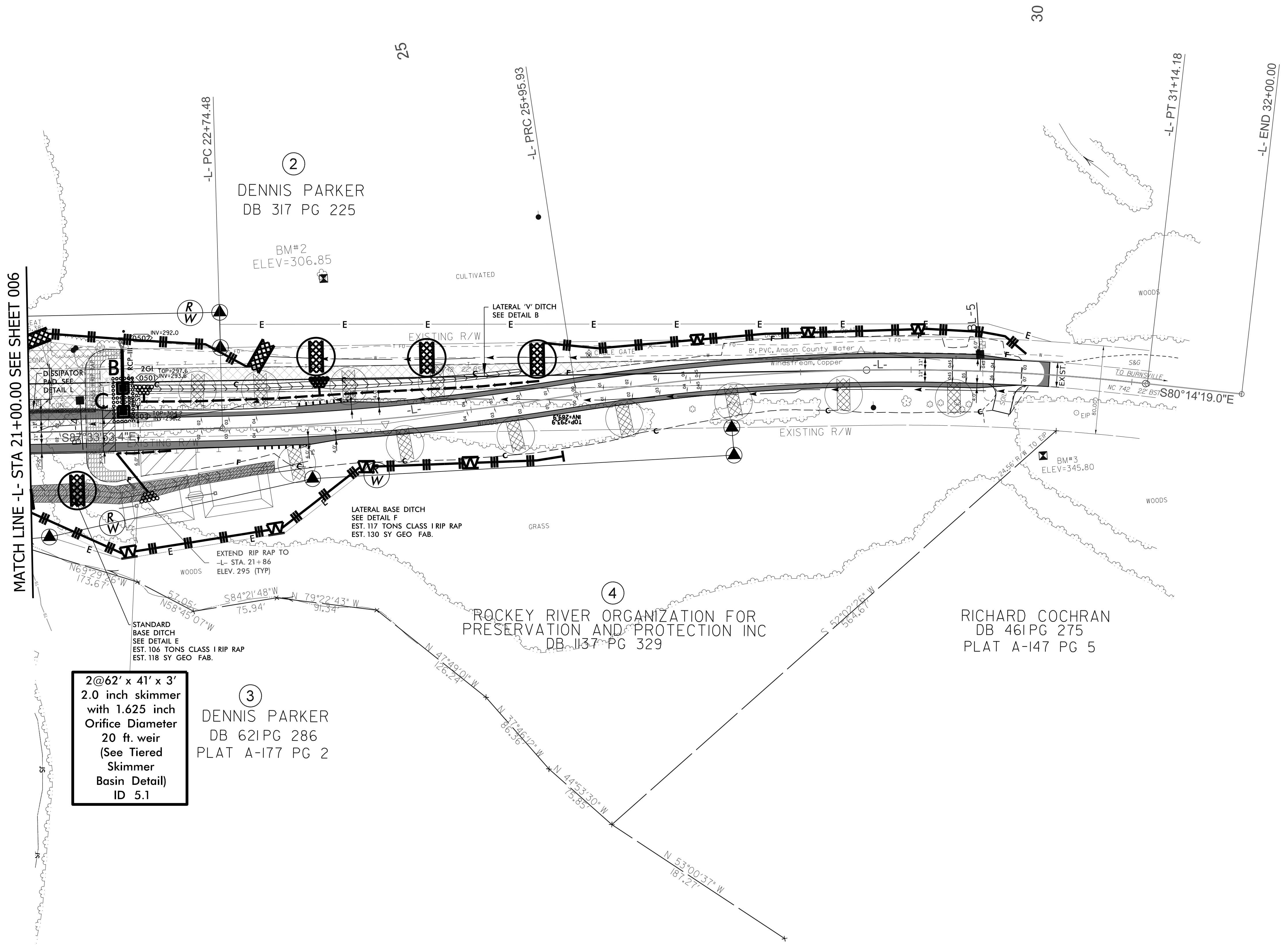
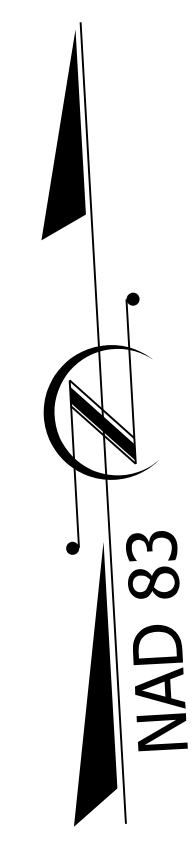
HYDRAULICS ENGINEER



PREPARED BY
ARCADIS
115 RESERVA WOODS PLACE, SUITE 400, CARY, NC 27513
 PHONE: 919-841-2200, WWW.ARCADIS.COM

CUR DATA -L-
 P/c 24+35.44
 $\Delta c = 07^{\circ}40'26.8''$ (LT)
 D = 02'23'14.4"
 Lc = 321.4529"
 Tc = 160.9672"
 R = 2400.0000"
 V = 50MPH
 SE = 0.04

CUR DATA -L-
 P/c 28+56.59
 $\Delta c = 15^{\circ}13'39.3''$ (RT)
 D = 02'56'17.7"
 Lc = 518.2542"
 Tc = 260.6632"
 R = 1950.0000"
 V = 50MPH
 SE = 0.045



Install Matting for Erosion Control on Entire Slope as Work Allows.
 SEE EC-3 FOR STATION RANGES

FINAL EROSION CONTROL FOR CONSTRUCTION SHEET 5

2@62' x 41' x 3'
 2.0 inch skimmer
 with 1.625 inch
 Orifice Diameter
 20 ft. weir
 (See Tiered
 Skimmer
 Basin Detail)
 ID 5.1

3
 DENNIS PARKER
 DB 621 PG 286
 PLAT A-177 PG 2

4
 ROCKY RIVER ORGANIZATION FOR
 PRESERVATION AND PROTECTION INC
 DB 1137 PG 329

RICHARD COCHRAN
 DB 461 PG 275
 PLAT A-147 PG 5

REVISIONS