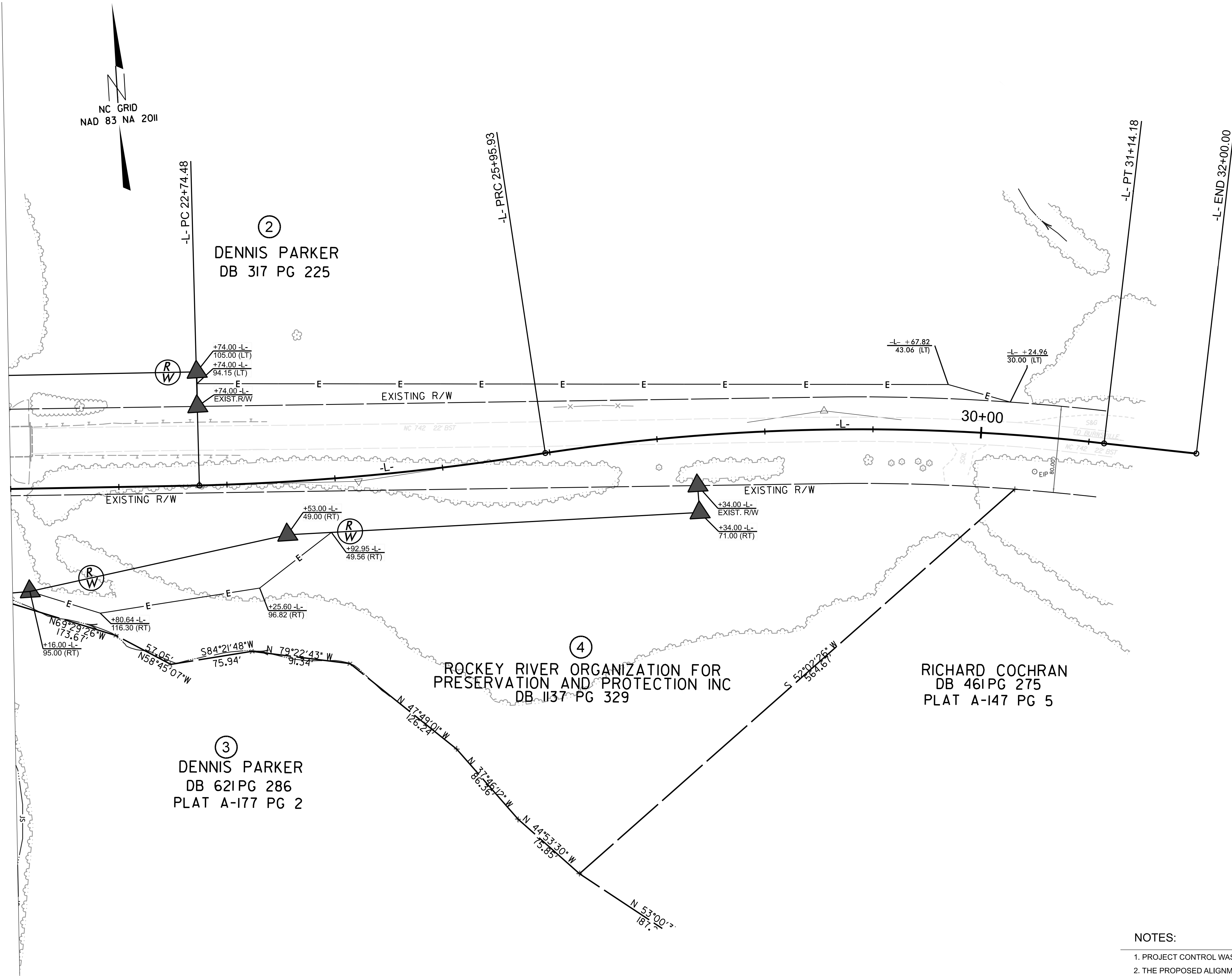


I, AUGUST A. THICK, CERTIFY THAT THE RIGHT OF WAY AND PERMANENT EASEMENT MONUMENTATION FOR THIS PROJECT SHOWN HEREIN WAS COMPLETED UNDER MY DIRECT AND RESPONSIBLE CHARGE FROM AN ACTUAL SURVEY MADE UNDER MY SUPERVISION; THAT ALL HORIZONTAL CLOSURES HAD A MINIMUM RATIO OF PRECISION OF 1:10,000 (CLASS A). FIELD WORK WAS PERFORMED NOVEMBER 2023, AND ALL COORDINATES ARE BASED ON NAD83/2011; THAT THIS SURVEY WAS PERFORMED TO MEET THE REQUIREMENTS OF 21NCAC 56.1600 AS APPLICABLE.

THIS 22ND DAY OF NOVEMBER, 2023.

DocuSigned by:  
  
01FF927CDE08046E  
PROFESSIONAL LAND SURVEYOR L-5373

MATCHLINE SHEET RW04 STA 21+00



NC GRID  
NAD 83 NA 2011

②  
DENNIS PARKER  
DB 317 PG 225

③  
DENNIS PARKER  
DB 621 PG 286  
PLAT A-177 PG 2

④  
ROCKY RIVER ORGANIZATION FOR  
PRESERVATION AND PROTECTION INC  
DB 1137 PG 329

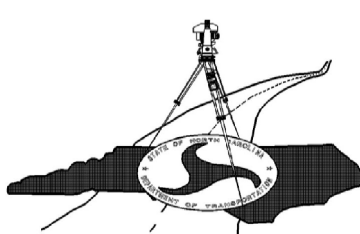
RICHARD COCHRAN  
DB 461 PG 275  
PLAT A-147 PG 5

NOTES:

1. PROJECT CONTROL WAS ESTABLISHED USING GNSS. THE GLOBAL NAVIGATION SATELLITE SYSTEM.
2. THE PROPOSED ALIGNMENT CONTROL DATA FOR THIS PROJECT HAS BEEN COMPILED FROM VARIOUS SOURCES. IF FURTHER INFORMATION REGARDING PROJECT CONTROL IS NEEDED, PLEASE CONTACT THE LOCATION AND SURVEYS UNIT.
3. RIGHT OF WAY MONUMENTATION ESTABLISHED NOVEMBER 2023.

TIP PROJECT: BR-0063  
County: ANSON

PREPARED FOR



LOCATION AND SURVEYS UNIT

PREPARED BY

