

# LEGEND

PAVED SHOULDER

## DATUM DESCRIPTION

THE LOCALIZED COORDINATE SYSTEM DEVELOPED FOR THIS PROJECT IS BASED ON THE STATE PLANE COORDINATES ESTABLISHED BY NCDOT FOR MONUMENT "BR-0063-1"

WITH NAD 83/NA 2011 STATE PLANE GRID COORDINATES OF NORTHING: 511274.2261(ft) EASTING: 1618286.1809(ft) ELEVATION: 298.225(ft)

THE AVERAGE COMBINED GRID FACTOR USED ON THIS PROJECT (GROUND TO GRID) IS: 0.99986472

THE N.C. LAMBERT GRID BEARING AND LOCALIZED HORIZONTAL GROUND DISTANCE FROM "BR-0063-1" TO -L- STATION IS

ALL LINEAR DIMENSIONS ARE LOCALIZED HORIZONTAL DISTANCES VERTICAL DATUM USED IS NAVD 88

**CUR DATA -L-**  
 P/c 24+35.44  
 $\Delta c = 07^{\circ}40'26.8"$  (LT)  
 D = 02°23'14.4"  
 Lc = 321.4529"  
 Tc = 160.9672"  
 R = 2400.0000"  
 V = 50MPH  
 SE = 0.04

**CUR DATA -L-**  
 P/c 28+56.59  
 $\Delta c = 15^{\circ}13'39.3"$  (RT)  
 D = 02°56'17.7"  
 Lc = 518.2542"  
 Tc = 260.6632"  
 R = 1950.0000"  
 V = 50MPH  
 SE = 0.045

**BR-0063**  
**RDY 05**

NORTH CAROLINA  
 DEPARTMENT OF TRANSPORTATION  
 ANSON COUNTY

ROADWAY DESIGN UNIT  
 ROADWAY DESIGN ENGINEER

Professional Engineer Seal  
 SEAL 054013  
 10/2/2024

HYDRAULICS ENGINEER

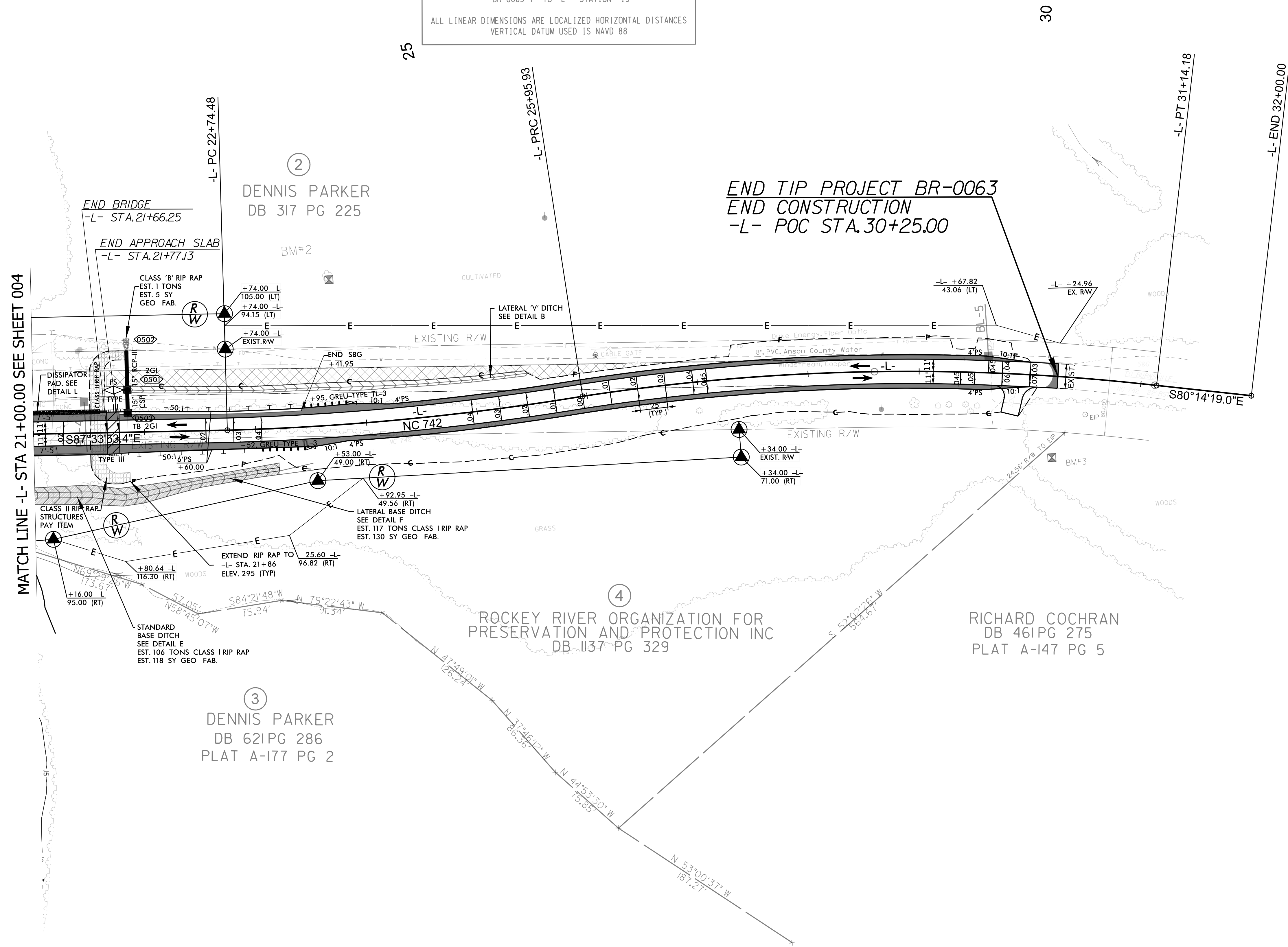
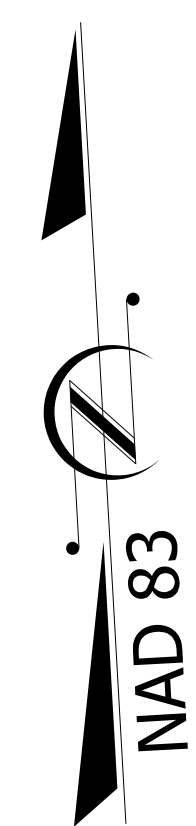
Professional Engineer Seal  
 SEAL 047056  
 10/2/2024

PREPARED BY

**ARCADIS**

175 REGENCY WOODS PLACE, SUITE 400, CARY, NC 27518  
 PHONE: 919.447.2200, 919.447.2297

DOCUMENT NOT CONSIDERED FINAL UNLESS ALL SIGNATURES COMPLETED



NOTE:  
 SEE SHEET NO. 07 FOR -L- PROFILE.  
 SEE SHEETS S-1 THRU S-18 FOR STRUCTURE PLANS.

REVISIONS