

LEGEND

PAVED SHOULDER

CUR DATA -L- P/c 8+56.77 $\Delta c = 18^{\circ}56'14.8''$ (LT) D = 06°05'43.1" Lc = 310.6896" Tc = 156.7746" R = 940.0000" SE = EXIST.	CUR DATA -L- P/c 13+93.64 $\Delta c = 34^{\circ}03'56.3''$ (LT) D = 04°35'01.2" Lc = 743.1970" Tc = 382.9464" R = 1250.0000" V = 50MPH SE = 0.06
--	---

BR-0063
RDY 04

NORTH CAROLINA
DEPARTMENT OF TRANSPORTATION
ANSON COUNTY

ROADWAY DESIGN UNIT
ROADWAY DESIGN ENGINEER

Professional Engineer Seal: SEAL 054013, 10/2/2024

Professional Engineer Seal: SEAL 047056, 10/2/2024

HYDRAULICS ENGINEER

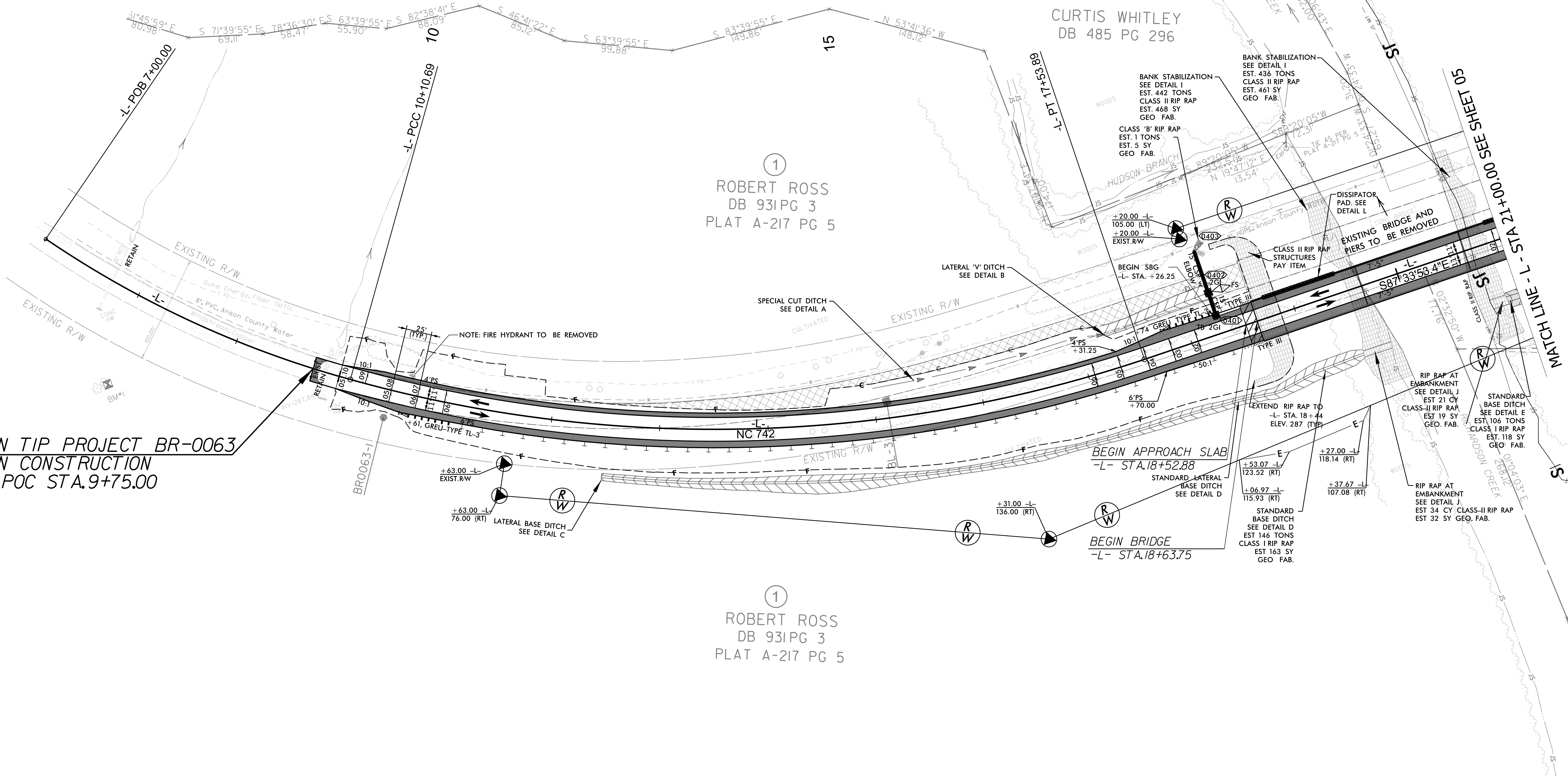
PREPARED BY

ARCADIS

175 REGENCY WOODS PLACE, STE 400, CARY, NC 27513
Phone: 919.447.2200, Fax: 919.447.2297

DOCUMENT NOT CONSIDERED FINAL UNLESS ALL SIGNATURES COMPLETED

BEGIN TIP PROJECT BR-0063
BEGIN CONSTRUCTION
-L- POC STA. 9+75.00



①
ROBERT ROSS
DB 931 PG 3
PLAT A-217 PG 5

NOTE:
SEE SHEET NO. 06 FOR -L- PROFILE.
SEE SHEETS S-1 THRU S-18 FOR STRUCTURE PLANS.

REVISIONS