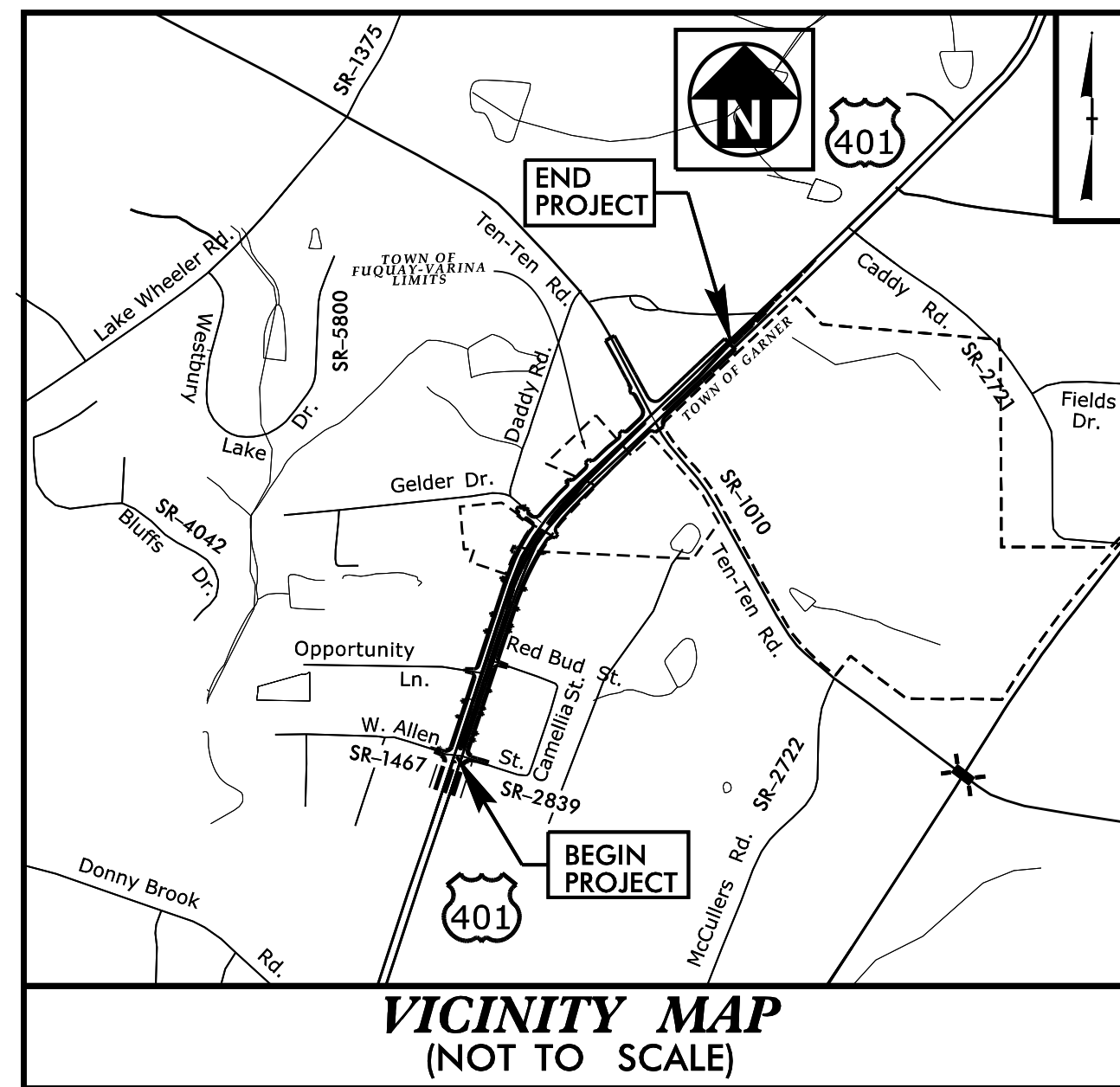


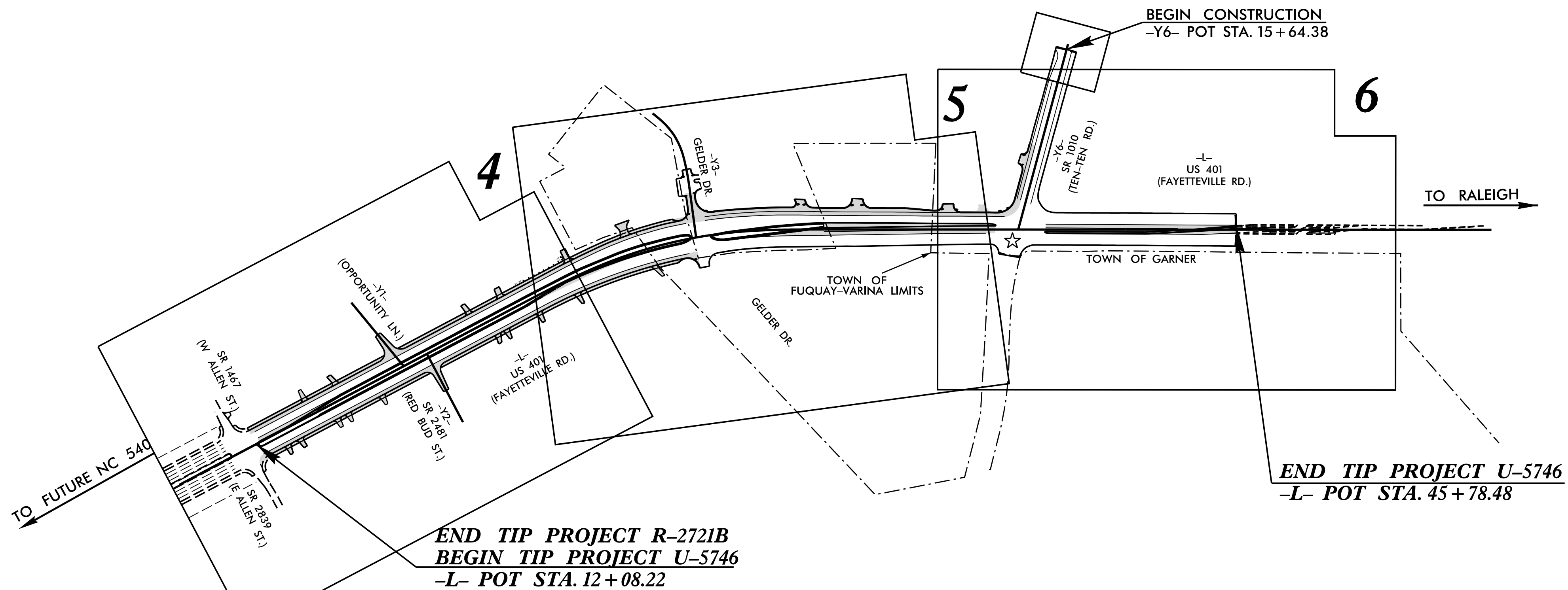
CONTRACT: C204968 TIP PROJECT: U-5746

STATE OF NORTH CAROLINA
 DIVISION OF HIGHWAYS
 PLAN FOR PROPOSED
 HIGHWAY EROSION CONTROL
 WAKE COUNTY

**LOCATION: US 401 (FAYETTEVILLE ROAD) FROM
 SR 1467/2839 (ALLEN STREET) TO NORTH
 OF SR 1010 (TEN-TEN ROAD)**
TYPE OF WORK: GRADING, PAVING, DRAINAGE, AND SIGNALS

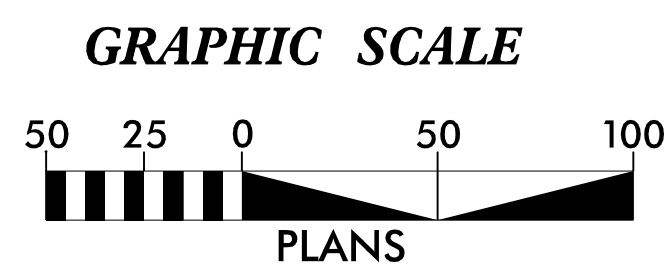


STATE	STATE PROJECT REFERENCE NO.	SHEET NO.	TOTAL SHEETS
N.C.	U-5746	EC-1	
STATE PROJ. NO.	F.A. PROJ. NO.	DESCRIPTION	
54032.1.1	N/A	P.E.	
54032.2.1	N/A	ROW	
54032.2.2	N/A	UTIL.	
54032.3.1	N/A	CONSTR.	



THIS PROJECT CONTAINS EROSION CONTROL PLANS FOR CLEARING AND GRUBBING PHASE OF CONSTRUCTION.

THIS PROJECT HAS BEEN DESIGNED TO SENSITIVE WATERSHED STANDARDS.



THESE EROSION AND SEDIMENT CONTROL PLANS COMPLY WITH THE APPLICABLE REGULATIONS SET FORTH BY THE NCG-010000 GENERAL CONSTRUCTION PERMIT EFFECTIVE APRIL 1, 2024 AND ISSUED BY THE NORTH CAROLINA DEPARTMENT OF ENVIRONMENTAL QUALITY DIVISION OF WATER RESOURCES.



Prepared In the Office of:

HDR Engineering, Inc. of the Carolinas
 555 Fayetteville St, Suite 900 Raleigh, N.C. 27601
 N.C.B.E.L.S. License Number: F-0116

Designed by:

David R. Wagner II, PE 4286
 NAME LEVEL III CERTIFICATION NO.

Roadway Standard Drawings

The "Roadway Standard Drawings"- Roadway Design Unit - N. C. Department of Transportation - Raleigh, N. C., dated January 2024 and the latest revision thereto are applicable to this project and by reference hereby are considered a part of these plans.

DIVISION OF HIGHWAYS STATE OF NORTH CAROLINA

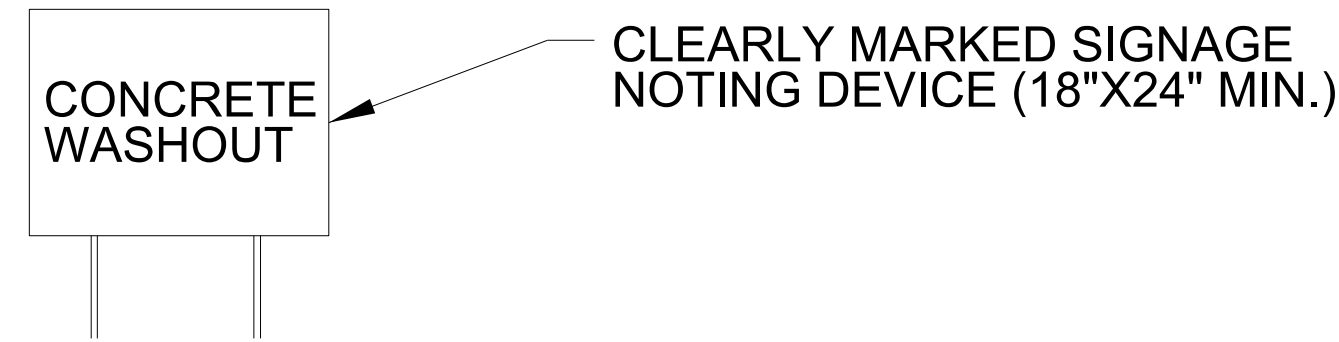
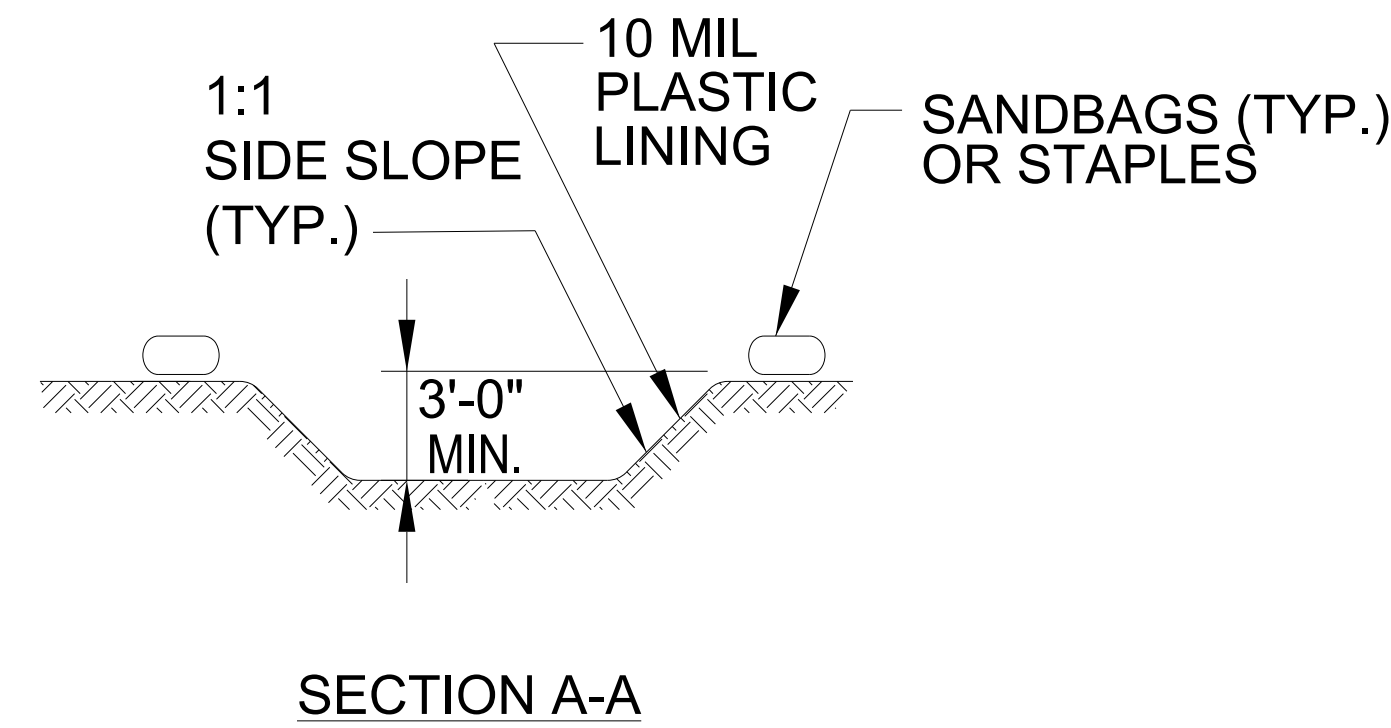
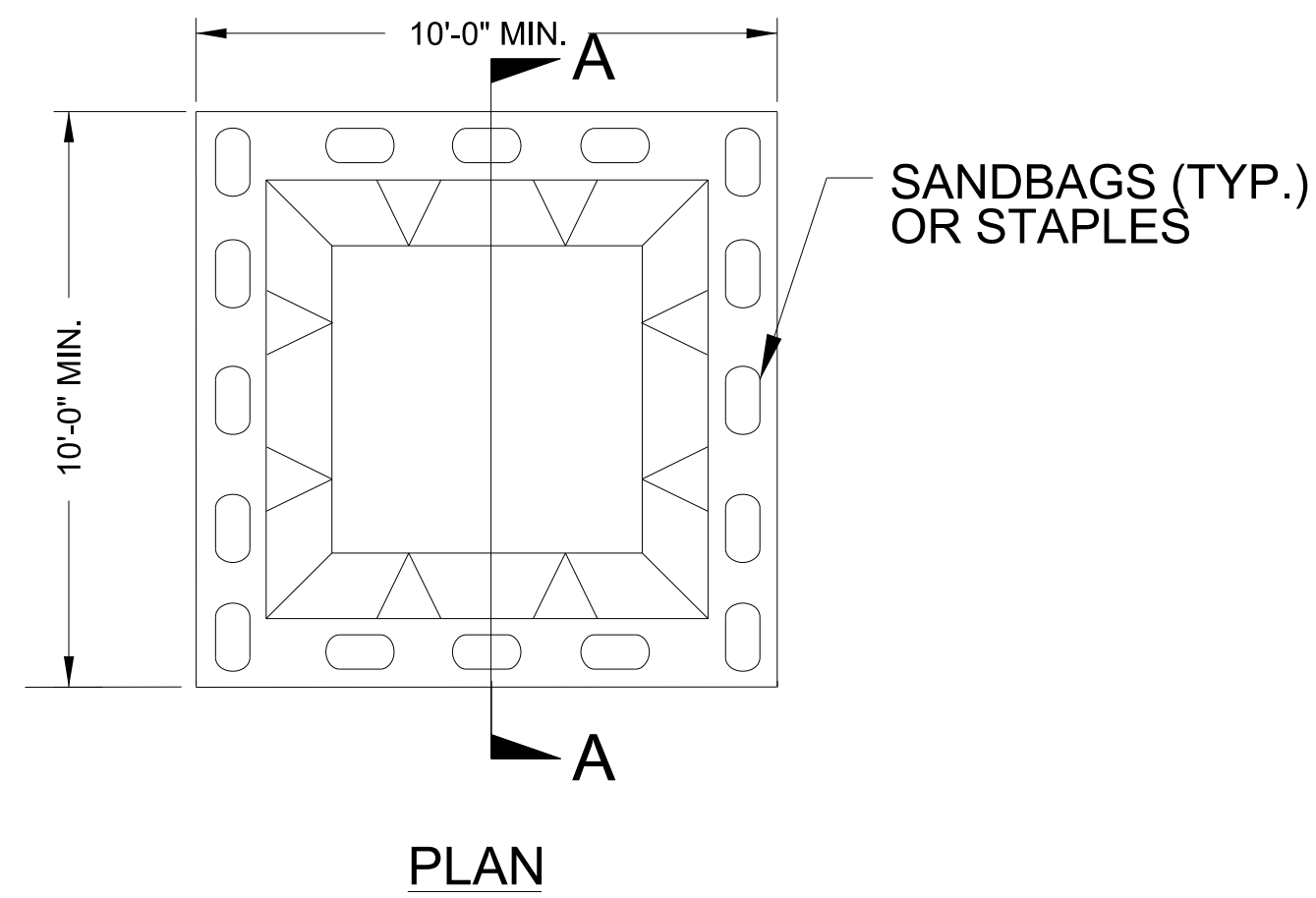
PROJECT REFERENCE NO. U-5746	SHEET NO. EC-02
ROADWAY DESIGN ENGINEER	HYDRAULICS ENGINEER

EROSION & SEDIMENT CONTROL LEGEND

Std. #	Description	Symbol	Std. #	Description	Symbol
1605.01	Temporary Silt Fence		1633.01	Temporary Rock Silt Check Type A	
1606.01	Special Sediment Control Fence		1633.02	Temporary Rock Silt Check Type B	
1622.01	Temporary Berms and Slope Drains		1633.03	Temporary Rock Silt Check Type A with Excelsior Matting and Flocculant	
1630.02	Silt Basin Type B		1634.01	Temporary Rock Sediment Dam Type A	
1630.03	Temporary Silt Ditch		1634.02	Temporary Rock Sediment Dam Type B	
1630.04	Stilling Basin		1635.01	Rock Pipe Inlet Sediment Trap Type A	
1630.05	Temporary Diversion		1635.02	Rock Pipe Inlet Sediment Trap Type B	
1630.06	Special Stilling Basin		1636.01	Excelsior Wattle Check	
1630.07	Skimmer Basin		1636.01	Excelsior Wattle Check with Flocculant	
1630.08	Tiered Skimmer Basin		1636.01	Coir Fiber Wattle Check	
1630.09	Earthen Dam with Skimmer		1636.01	Coir Fiber Wattle Check with Flocculant	
	Infiltration Basin		1636.02	Silt Fence Excelsior Wattle Break	
	Rock Inlet Sediment Trap:			Silt Fence Coir Fiber Wattle Break	
1632.01	Type A		1636.03	Excelsior Wattle Barrier	
1632.02	Type B		1636.03	Coir Fiber Wattle Barrier	
1632.03	Type C				

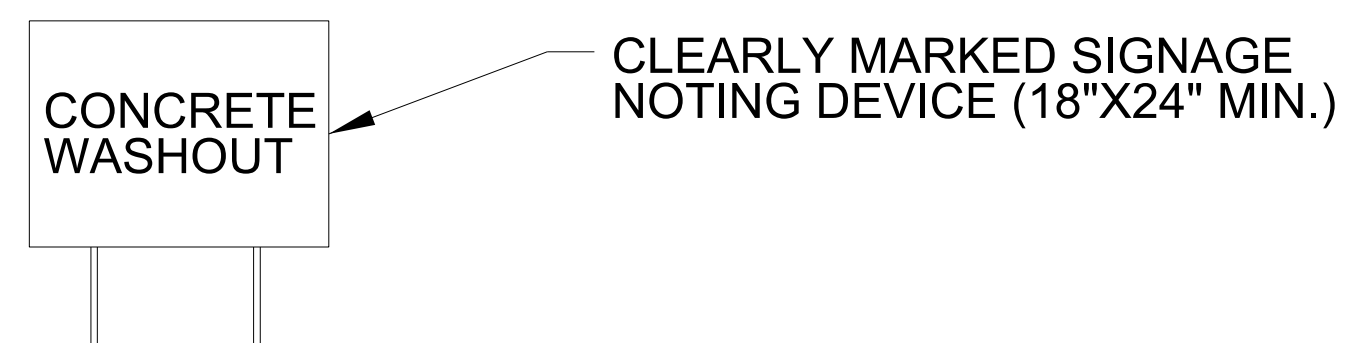
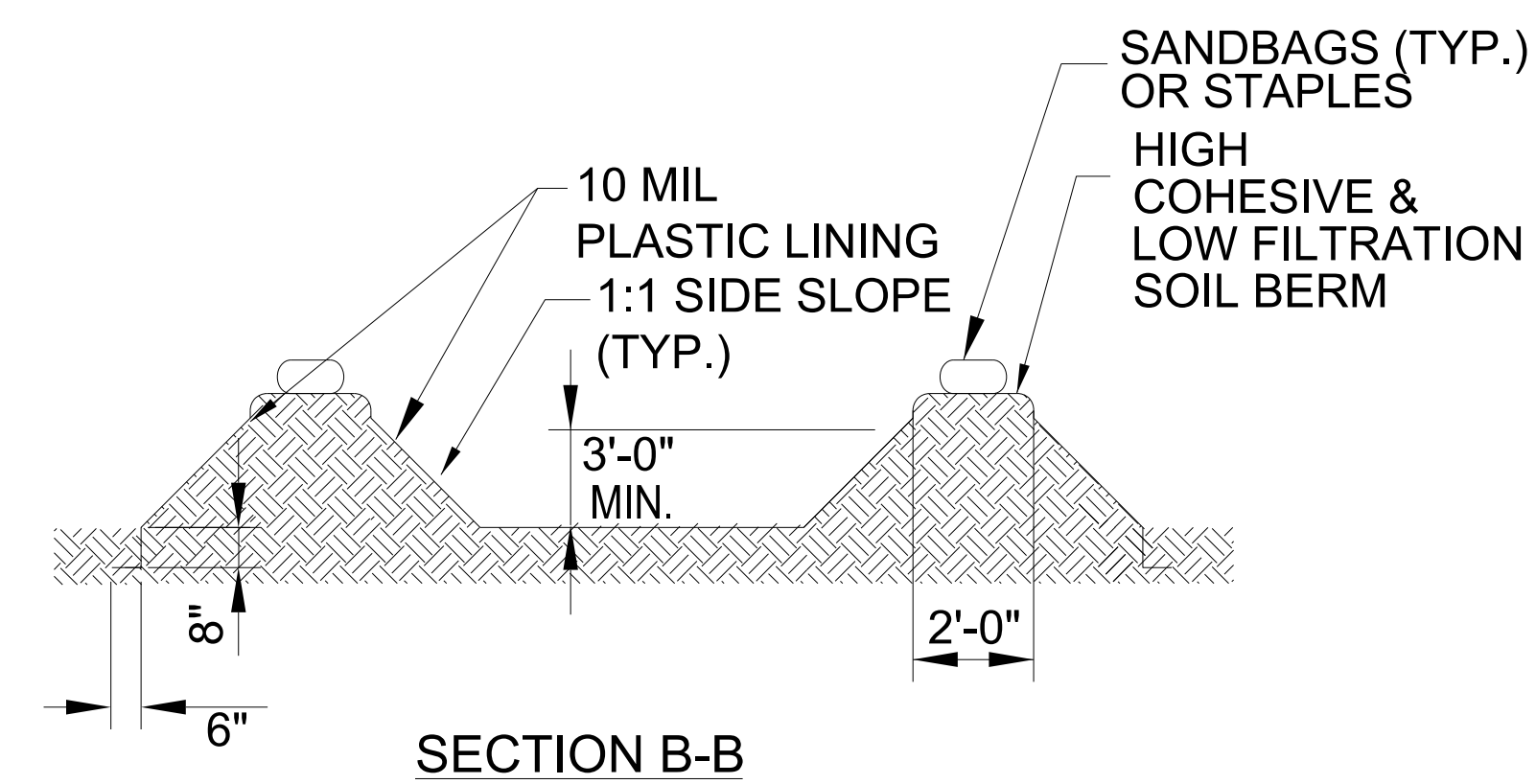
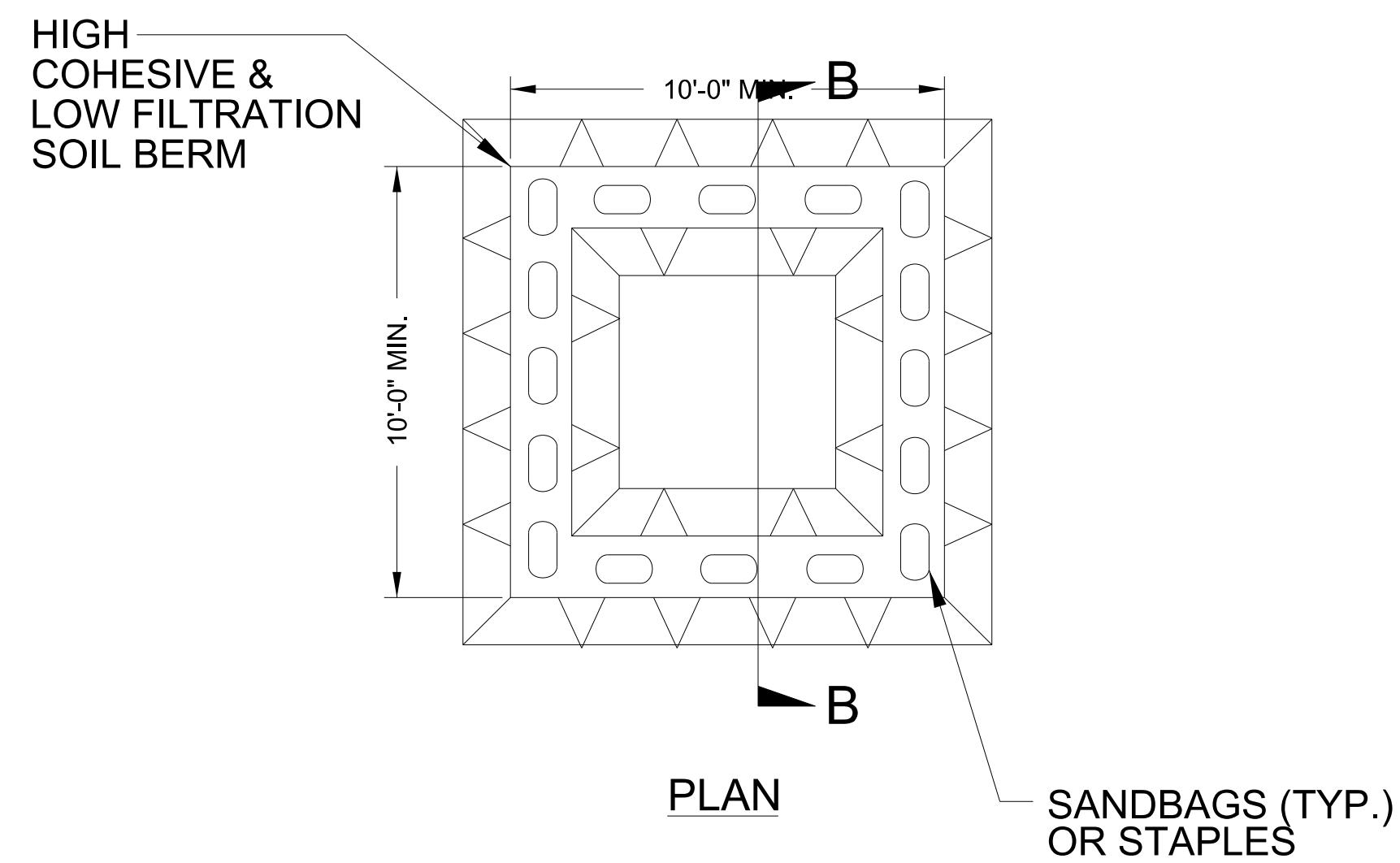
PROJECT REFERENCE NO.	SHEET NO.
U-5746	EC-2A
R/W SHEET NO.	
ROADWAY DESIGN ENGINEER	HYDRAULICS ENGINEER

ONSITE CONCRETE WASHOUT STRUCTURE WITH LINER



BELOW GRADE WASHOUT STRUCTURE
NOT TO SCALE

- NOTES:**
1. ACTUAL LOCATION DETERMINED IN FIELD
 2. THE CONCRETE WASHOUT STRUCTURES SHALL BE MAINTAINED WHEN THE LIQUID AND/OR SOLID REACHES 75% OF THE STRUCTURES CAPACITY TO PROVIDE ADEQUATE HOLDING CAPACITY WITH A MINIMUM 12 INCHES OF FREEBOARD.
 3. CONCRETE WASHOUT STRUCTURE NEEDS TO BE CLEARLY MARKED WITH SIGNAGE NOTING DEVICE.



ABOVE GRADE WASHOUT STRUCTURE
NOT TO SCALE

- NOTES:**
1. ACTUAL LOCATION DETERMINED IN FIELD
 2. THE CONCRETE WASHOUT STRUCTURES SHALL BE MAINTAINED WHEN THE LIQUID AND/OR SOLID REACHES 75% OF THE STRUCTURES CAPACITY TO PROVIDE ADEQUATE HOLDING CAPACITY WITH A MINIMUM 12 INCHES OF FREEBOARD.
 3. CONCRETE WASHOUT STRUCTURE NEEDS TO BE CLEARLY MARKED WITH SIGNAGE NOTING DEVICE.

DIVISION OF HIGHWAYS
STATE OF NORTH CAROLINA



HDR Engineering, Inc. of the Carolinas
555 Fayetteville St, Suite 900 Raleigh, N.C. 27601
N.C.B.E.L.S. License Number: F-0116

PROJECT REFERENCE NO. U-5746	SHEET NO. EC-3
ROADWAY DESIGN ENGINEER	HYDRAULICS ENGINEER

SOIL STABILIZATION SUMMARY SHEET

MATTING IN DITCHES - STRAW

PSRM IN DITCHES - TYPE 3

CONST SHEET NO.	LINE	FROM STATION	TO STATION	SIDE	ESTIMATE (SY)
4	-L-	11+80	15+00	LT.	495
4	-L-	15+00	17+00	LT.	250
4	-L-	17+50	18+30	LT.	100
4	-L-	18+30	23+00	LT.	585
4	-L-	14+50	18+26	M.	555
4	-L-	18+26	21+65	M.	500
4	-L-	23+00	24+50	M.	115
4	-L-	12+00	16+00	RT.	590
4	-L-	16+00	23+50	RT.	575
5	-L-	24+00	24+35	LT.	35
5	-L-	24+35	25+50	LT.	115
5	-L-	25+50	27+85	LT.	235
5	-L-	25+69	27+00	M.	105
5	-L-	29+00	29+51	M.	40
5	-L-	29+51	30+90	M.	110
5	-L-	30+90	34+00	M.	240
5	-L-	23+50	27+50	RT.	505
			TOTAL		5150
			TOTAL FOR DITCHES		5150
			TOTAL FOR SLOPES		0 SY
			MISC. MATTING TO BE INSTALLED AS DIRECTED BY ENGINEER		6420 SY
			OVERALL TOTAL		11570

CONST SHEET NO.	LINE	FROM STATION	TO STATION	SIDE	ESTIMATE (SY)
5	-L-	24+33	24+35	LT	55
			TOTAL MATTING - PSRM		55

PENTABLE: NCDOT_TSH.tbl
TIME: 1:41:29 PM SCALE: 1:398.182

PLOT DRIVER: NCDOT_pdf_color_eng.100.plt
USER: DWAGNER DATE: 5/21/2024
FILE: \

DIVISION OF HIGHWAYS
STATE OF NORTH CAROLINA

HDR HDR Engineering, Inc. of the Carolinas
555 Fayetteville St, Suite 900 Raleigh, N.C. 27601
N.C.B.E.L.S. License Number: F-0116

PROJECT REFERENCE NO. U-5746	SHEET NO. EC-3A
ROADWAY DESIGN ENGINEER	HYDRAULICS ENGINEER

SOIL STABILIZATION TIMEFRAMES

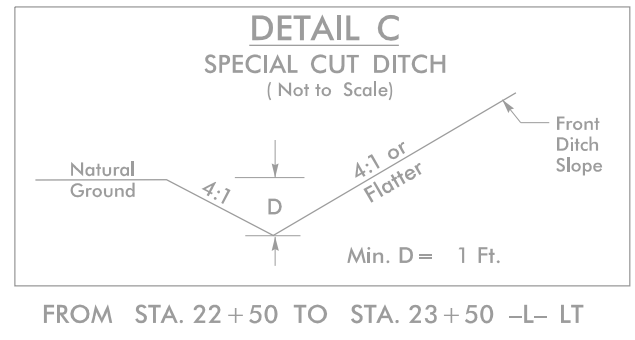
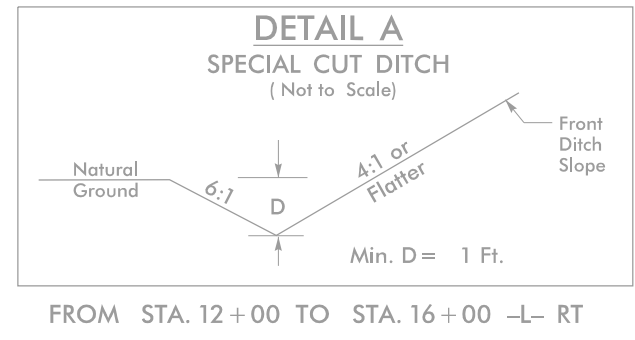
<i>SITE DESCRIPTION</i>	<i>STABILIZATION TIME</i>	<i>TIMEFRAME EXCEPTIONS</i>
PERIMETER DIKES, SWALES, DITCHES AND SLOPES	7 DAYS	NONE
HIGH QUALITY WATER (HQW) ZONES	7 DAYS	NONE
SLOPES STEEPER THAN 3:1	7 DAYS	IF SLOPES ARE 10' OR LESS IN LENGTH AND ARE NOT STEEPER THAN 2:1, 14 DAYS ARE ALLOWED.
SLOPES 3:1 TO 4:1	14 DAYS	7 DAYS FOR SLOPES GREATER THAN 50' IN LENGTH WITH SLOPES STEEPER THAN 4:1. 7 DAYS FOR PERIMETER DIKES, SWALES, DITCHES PERIMETER SLOPES, AND HQW ZONES
ALL OTHER AREAS WITH SLOPES FLATTER THAN 4:1	14 DAYS	7 DAYS FOR PERIMETER DIKES, SWALES, DITCHES PERIMETER SLOPES, AND HQW ZONES

PENTABLE: NCDOT_TSH.tbl
TIME: 9:10:13 AM SCALE: 1:398.182

PLOT DRIVER: NCDOT_pdf_color_eng_100.plt
USER: DWAGNER DATE: 5/21/2024
FILE: \

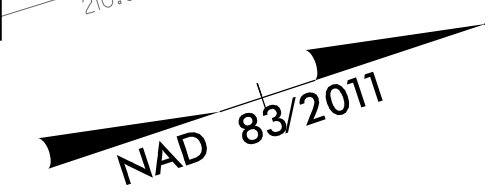
PROJECT REFERENCE NO.	SHEET NO.
U-5746	EC-4/CONST. 4
RW SHEET NO.	
ROADWAY DESIGN ENGINEER	HYDRAULICS ENGINEER

HDR HDR Engineering, Inc. of the Carolinas
 555 Fayetteville St. Suite 900 Raleigh, N.C. 27601
 N.C.B.E.L.S. License Number: F-0116

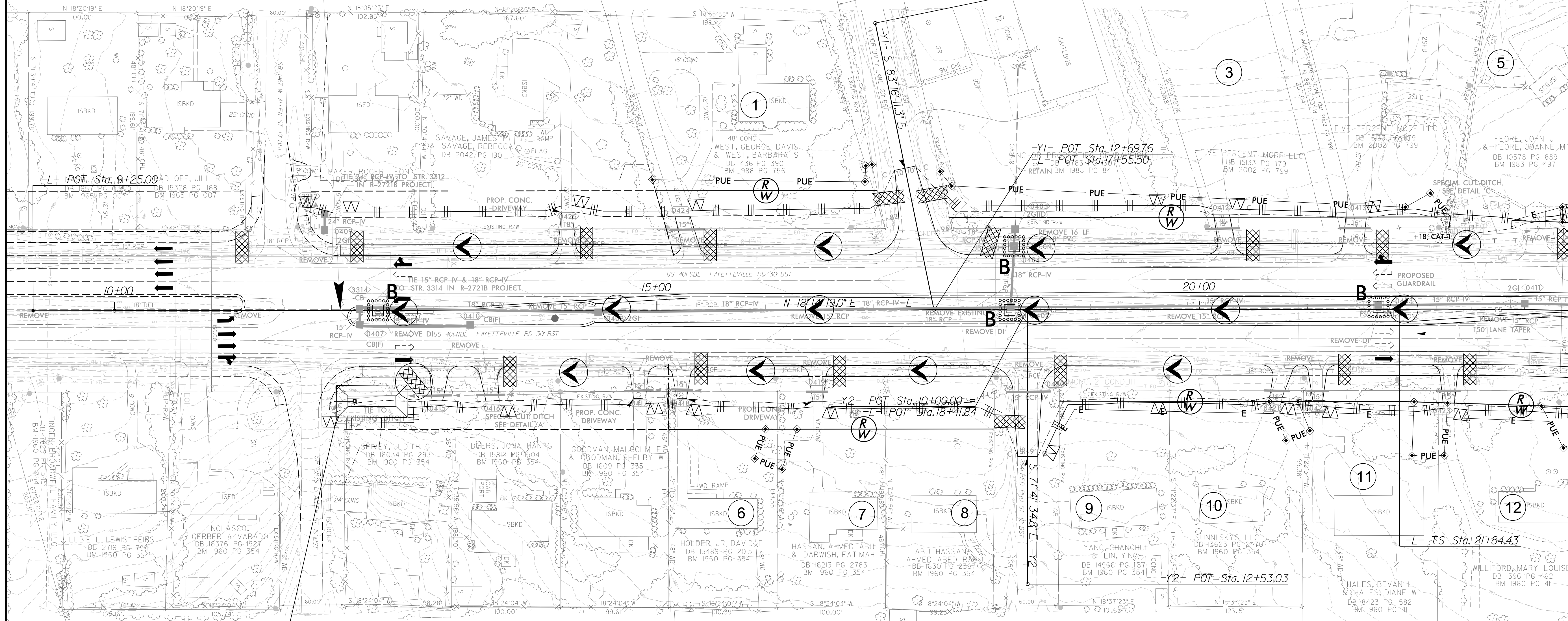


CLEARING AND GRUBBING
 EROSION CONTROL FOR
 CONSTRUCTION SHEET 4

NOTE:
 PLACE TEMPORARY ROCK SEDIMENT DAMS TYPE - B
 AND TEMPORARY ROCK SILT CHECKS TYPE - A AT
 DRAINAGE OUTLETS.



END TIP PROJECT R-2721B
 BEGIN TIP PROJECT U-5746
 BEGIN CONSTRUCTION
 -L- STA. 12+08.22



65 x 30 x 3
 1.5 inch Skimmer
 with 1.25 inch
 Orifice Diameter
 11 ft. weir
 ID 4.1 B

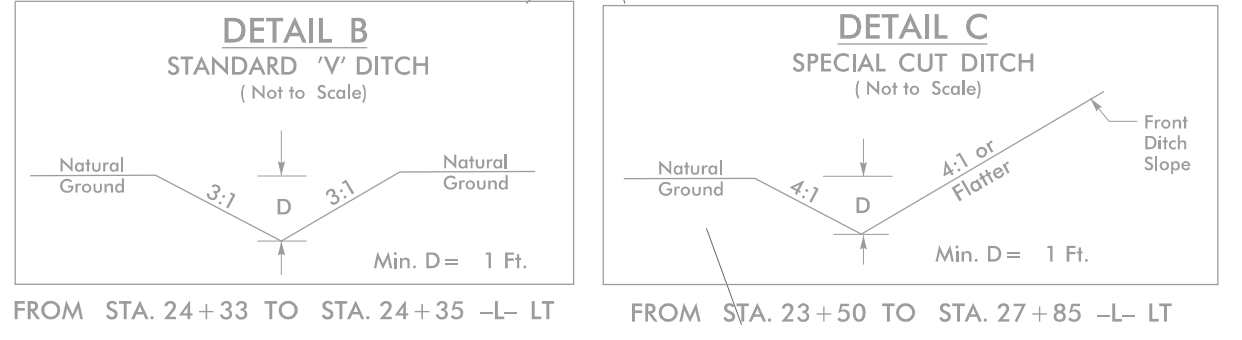
MATCHLINE -L- STA. 23+50, SEE SHEET 5

REVISIONS

PLOT DRIVER: NCDOT_color_eng_100.plt
 USER: DWAGNER
 DATE: 5/21/2024
 TIME: 9:10:21 AM
 FILE: \

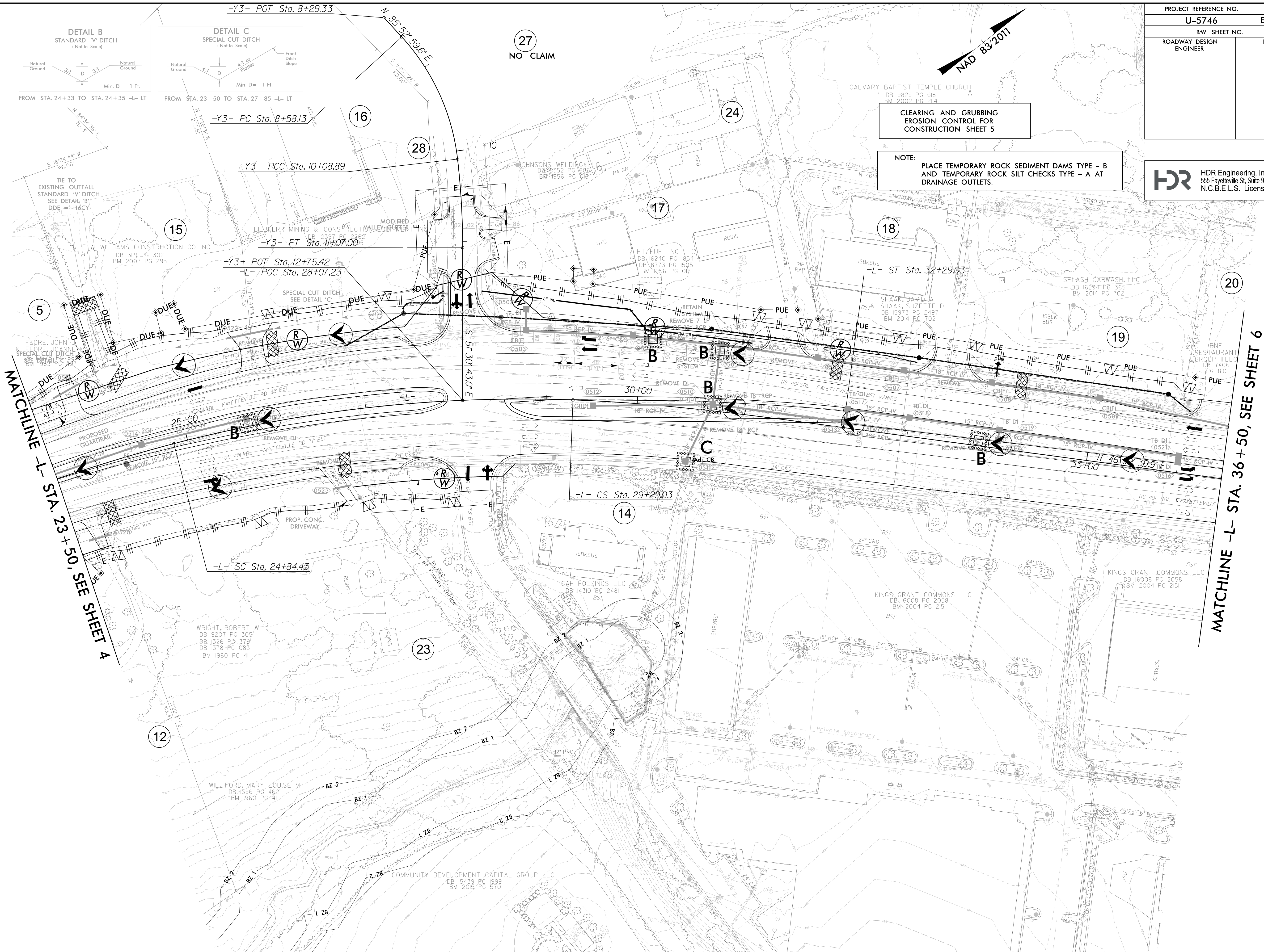
PROJECT REFERENCE NO.	SHEET NO.
U-5746	EC-5/CONST. 5
RW SHEET NO.	
ROADWAY DESIGN ENGINEER	HYDRAULICS ENGINEER

HDR HDR Engineering, Inc. of the Carolinas
 555 Fayetteville St. Suite 900 Raleigh, N.C. 27601
 N.C.B.E.L.S. License Number: F-0116



**CLEARING AND GRUBBING
 EROSION CONTROL FOR
 CONSTRUCTION SHEET 5**

NOTE:
 PLACE TEMPORARY ROCK SEDIMENT DAMS TYPE - B
 AND TEMPORARY ROCK SILT CHECKS TYPE - A AT
 DRAINAGE OUTLETS.



REVISIONS

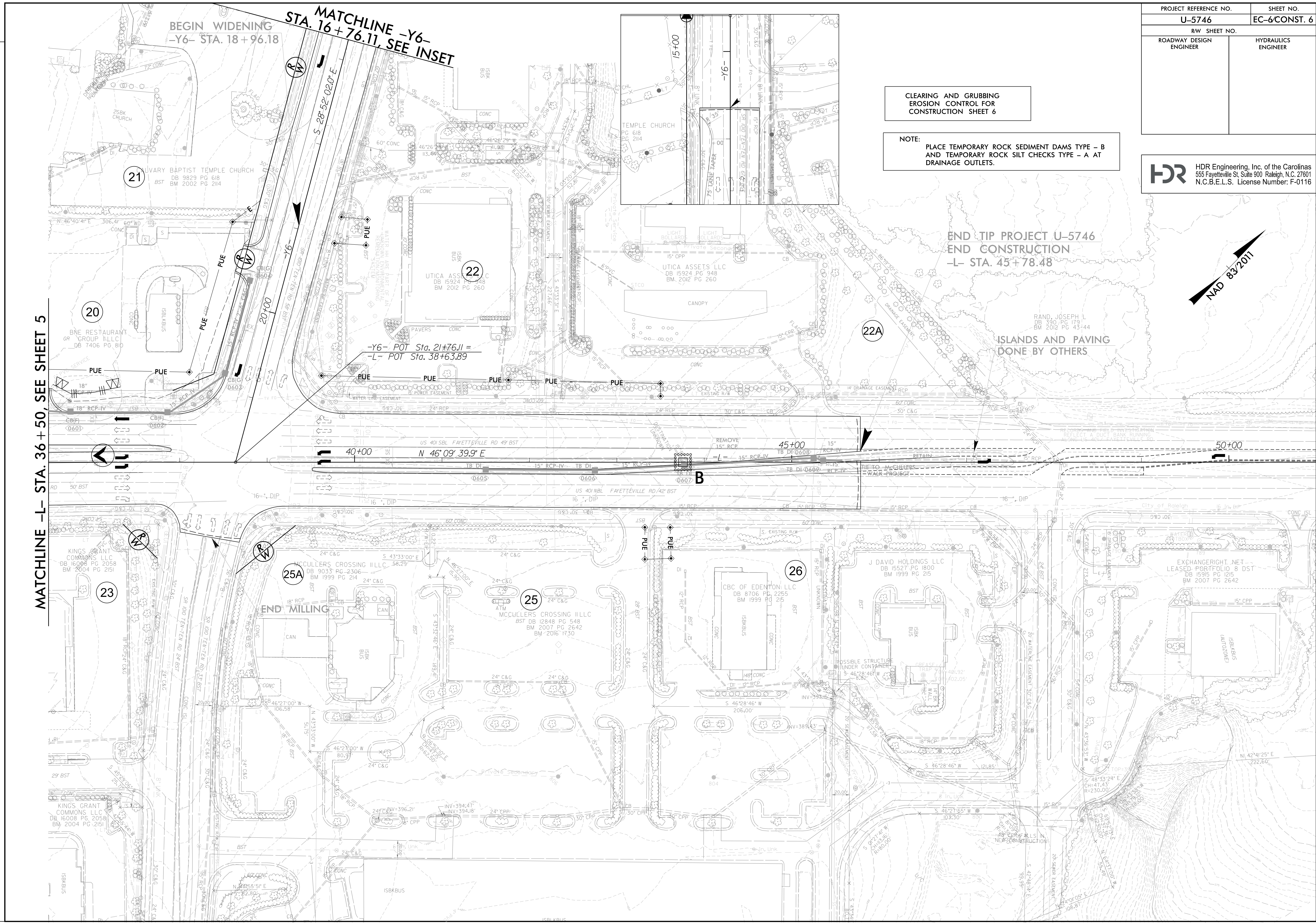
PLOT DRIVER: NCDOT_ncdot_color_eng_100.plt
 USER: DWAGNER
 DATE: 5/21/2024
 TIME: 9:10:29 AM
 FILE: \

PROJECT REFERENCE NO.	SHEET NO.
U-5746	EC-6/CONST. 6
RW SHEET NO.	
ROADWAY DESIGN ENGINEER	HYDRAULICS ENGINEER

HDR HDR Engineering, Inc. of the Carolinas
 555 Fayetteville St. Suite 900 Raleigh, N.C. 27601
 N.C.B.E.L.S. License Number: F-0116

CLEARING AND GRUBBING
 EROSION CONTROL FOR
 CONSTRUCTION SHEET 6

NOTE:
 PLACE TEMPORARY ROCK SEDIMENT DAMS TYPE - B
 AND TEMPORARY ROCK SILT CHECKS TYPE - A AT
 DRAINAGE OUTLETS.



MATCHLINE -L- STA. 36 + 50, SEE SHEET 5

MATCHLINE -Y6- STA. 16+76.11, SEE INSET

END TIP PROJECT U-5746
 END CONSTRUCTION
 -L- STA. 45+78.88

ISLANDS AND PAVING
 DONE BY OTHERS

END MILLING

REVISIONS

PLOT DRIVER: NCDOT_pdf_color_eng_100.pht
 USER: DWAGNER
 DATE: 5/21/2024
 TIME: 9:10:42 AM
 FILE:

21 LIVERY BAPTIST TEMPLE CHURCH
 DB 9829 PG 618
 BM 2002 PG 2114

22 UTICA ASSETS LLC
 DB 15924 PG 948
 BM 2012 PG 260

20 BNE RESTAURANT
 GR GROUP LLC
 DB 7406 PG 810

23 KINGS GRANT
 COMMONS LLC
 DB 16008 PG 2058
 BM 2004 PG 2151

25A MCCULLERS CROSSING ILLC
 DB 9033 PG 2306
 BM 1999 PG 214

25 MCCULLERS CROSSING ILLC
 BST DB 12848 PG 548
 BM 2007 PG 2642
 BM 2016 1730

26 CBC OF EDENFON LLC
 DB 8706 PG 2255
 BM 1999 PG 215

J DAVID HOLDINGS LLC
 DB 15527 PG 1800
 BM 1999 PG 215

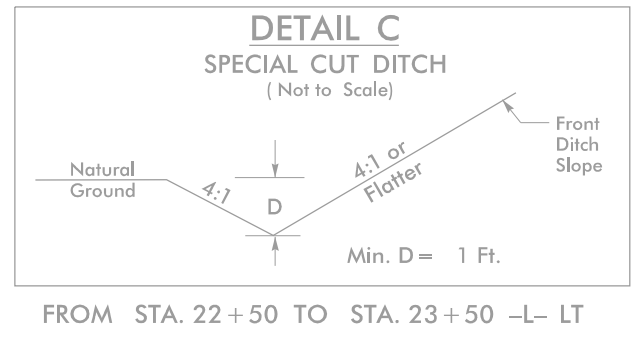
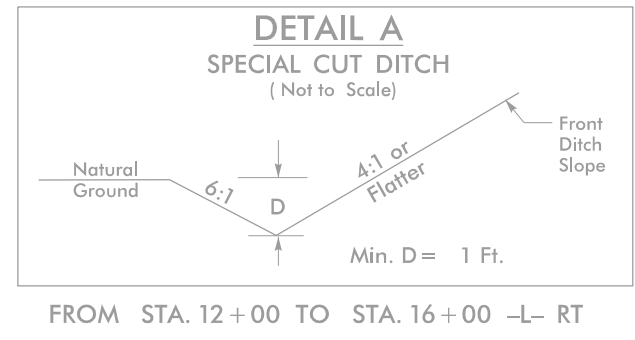
EXCHANGERIGHT.NET -
 LEASED PORTFOLIO 8 DST
 DB 15915 PG 1215
 BM 2007 PG 2642

KINGS GRANT
 COMMONS LLC
 DB 16008 PG 2058
 BM 2004 PG 2151

48' 33' 24" E
 CH=47.43
 R=230.00

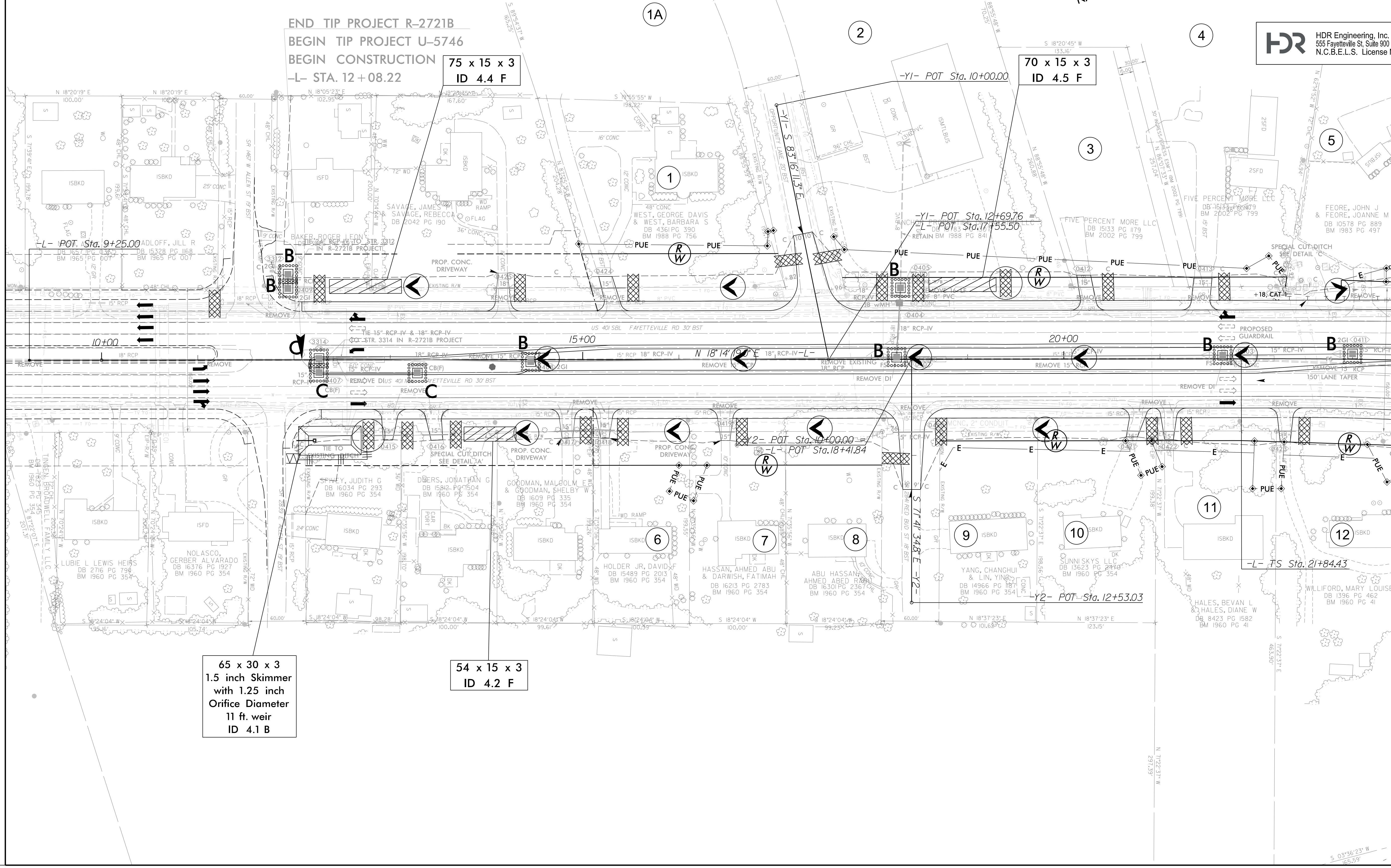
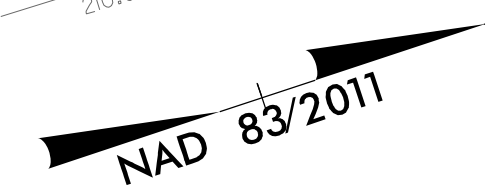
PROJECT REFERENCE NO.	SHEET NO.
U-5746	EC-7/CONST. 4
RW SHEET NO.	
ROADWAY DESIGN ENGINEER	HYDRAULICS ENGINEER

HDR HDR Engineering, Inc. of the Carolinas
 555 Fayetteville St. Suite 900 Raleigh, N.C. 27601
 N.C.B.E.L.S. License Number: F-0116



FINAL GRADE EROSION CONTROL FOR CONSTRUCTION SHEET 4

NOTE: UTILIZE FABRIC INSERT INLET PROTECTION DEVICE AS DIRECTED BY ENGINEER IN LIEU OF ROCK INLET SEDIMENT TRAP TYPE C TO PREVENT IMPOUNDING RUNOFF ON ROADWAYS OPEN TO THE PUBLIC.



REVISIONS

MATCHLINE -L- STA. 23+50, SEE SHEET 5

PLOT DRIVER: NCDOT_color_eng_100.plt
 USER: DWAGNER
 DATE: 5/21/2024
 TIME: 9:10:49 AM
 FILE: \

65 x 30 x 3
 1.5 inch Skimmer
 with 1.25 inch
 Orifice Diameter
 11 ft. weir
 ID 4.1 B

54 x 15 x 3
 ID 4.2 F

75 x 15 x 3
 ID 4.4 F

70 x 15 x 3
 ID 4.5 F

END TIP PROJECT R-2721B
 BEGIN TIP PROJECT U-5746
 BEGIN CONSTRUCTION
 -L- STA. 12+08.22

-L- POT Sta. 9+25.00

-YI- POT Sta. 10+00.00

-YI- POT Sta. 12+69.76 =
 -L- POT Sta. 17+55.50

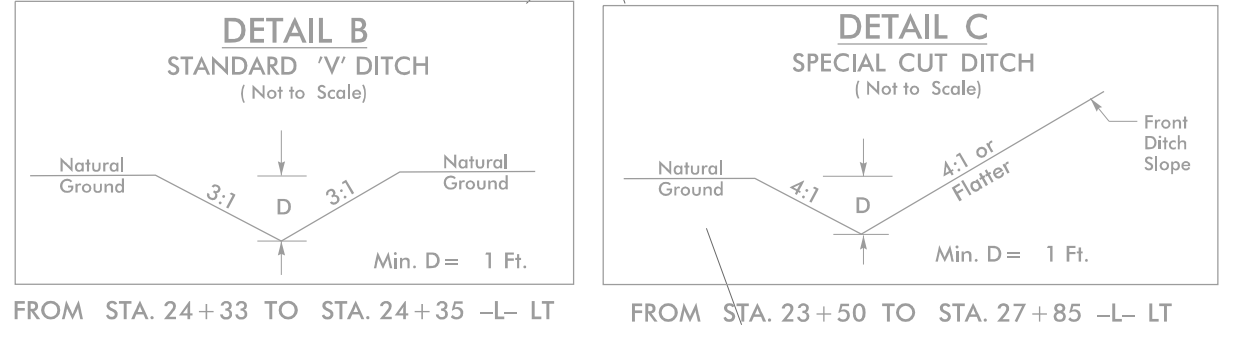
-Y2- POT Sta. 10+00.00 =
 -L- POT Sta. 18+41.84

-Y2- POT Sta. 12+53.03

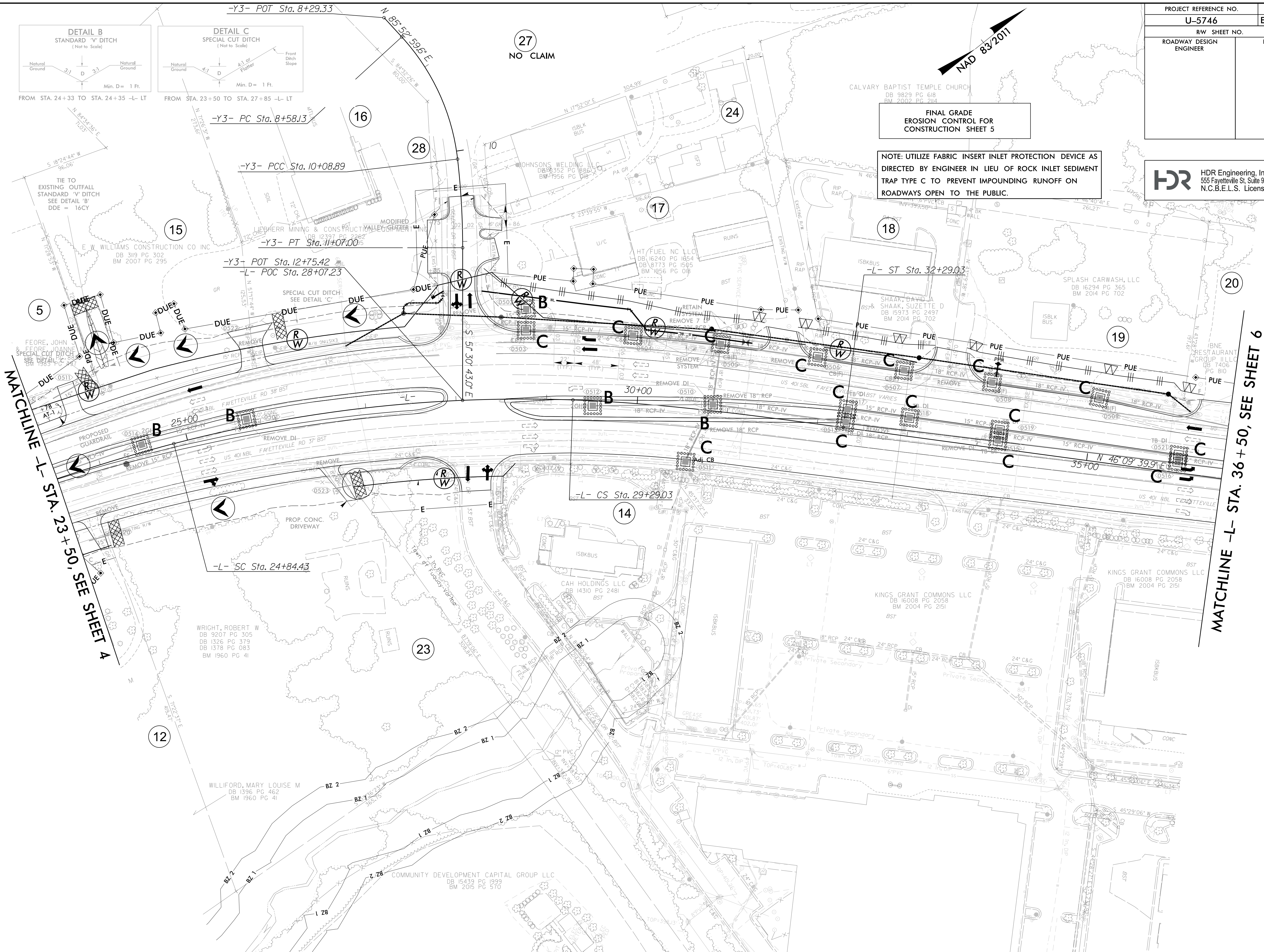
-L- TS Sta. 21+84.43

PROJECT REFERENCE NO.	SHEET NO.
U-5746	EC-8/CONST. 5
RW SHEET NO.	
ROADWAY DESIGN ENGINEER	HYDRAULICS ENGINEER

HDR HDR Engineering, Inc. of the Carolinas
 555 Fayetteville St. Suite 900 Raleigh, N.C. 27601
 N.C.B.E.L.S. License Number: F-0116



FROM STA. 24+33 TO STA. 24+35 -L- LT
 FROM STA. 23+50 TO STA. 27+85 -L- LT



**FINAL GRADE
 EROSION CONTROL FOR
 CONSTRUCTION SHEET 5**

**NOTE: UTILIZE FABRIC INSERT INLET PROTECTION DEVICE AS
 DIRECTED BY ENGINEER IN LIEU OF ROCK INLET SEDIMENT
 TRAP TYPE C TO PREVENT IMPOUNDING RUNOFF ON
 ROADWAYS OPEN TO THE PUBLIC.**

MATCHLINE -L- STA. 23 + 50, SEE SHEET 4

MATCHLINE -L- STA. 36 + 50, SEE SHEET 6

27
NO CLAIM



REVISIONS

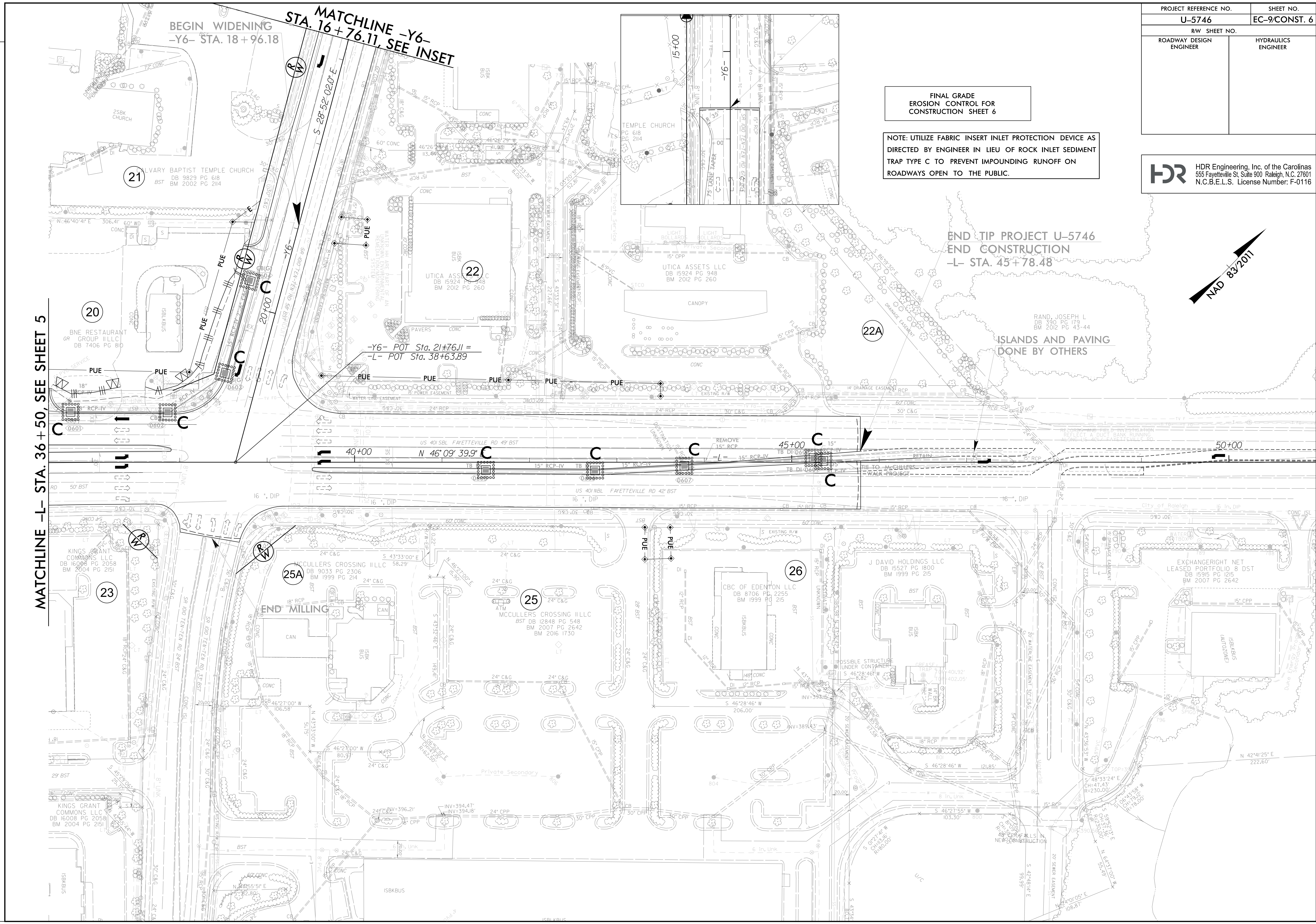
PLOT DRIVER: NCDOT_color_eng_100.plt
 USER: DWAGNER
 FILE: \\\n
 PENTABLE: NCDOT_EC_FINAL_BW.tbl
 TIME: 9:10:56 AM
 DATE: 5/21/2024

PROJECT REFERENCE NO.	SHEET NO.
U-5746	EC-9/CONST. 6
RW SHEET NO.	
ROADWAY DESIGN ENGINEER	HYDRAULICS ENGINEER

HDR HDR Engineering, Inc. of the Carolinas
 555 Fayetteville St. Suite 900 Raleigh, N.C. 27601
 N.C.B.E.L.S. License Number: F-0116

FINAL GRADE
 EROSION CONTROL FOR
 CONSTRUCTION SHEET 6

NOTE: UTILIZE FABRIC INSERT INLET PROTECTION DEVICE AS
 DIRECTED BY ENGINEER IN LIEU OF ROCK INLET SEDIMENT
 TRAP TYPE C TO PREVENT IMPOUNDING RUNOFF ON
 ROADWAYS OPEN TO THE PUBLIC.



END TIP PROJECT U-5746
 END CONSTRUCTION
 -L- STA. 45+78.48

ISLANDS AND PAVING
 DONE BY OTHERS

MATCHLINE -L- STA. 36+50, SEE SHEET 5

BEGIN WIDENING
 -Y6- STA. 18+96.18

MATCHLINE -Y6-
 STA. 16+76.11, SEE INSET

-Y6- POT Sta. 21+76.11 =
 -L- POT Sta. 38+63.89

END MILLING

REVISIONS

PLOT DRIVER: NCDOT_pdf_color_eng_100.plt
 USER: DWAGNER
 PENTABLE: NCDOT_EC_FINAL_BW.tbl
 DATE: 5/21/2024
 TIME: 9:11:08 AM