

T.I.P.: U-5746

STATE OF NORTH CAROLINA DEPARTMENT OF TRANSPORTATION

PAVEMENT MARKING PLAN WAKE COUNTY

LOCATION: US 401 (FAYETTEVILLE RD) FROM SR 1467 / SR 2839 (ALLEN ST) TO NORTH OF SR 1010 (TEN-TEN RD)

TIP NO. U-5746 SHEET NO. PMP - 1 APPROVED: DATE: SEAL DOCUMENT NOT CONSIDERED FINAL UNLESS ALL SIGNATURES COMPLETED

INDEX

Table with 2 columns: SHEET NO., DESCRIPTION. Includes PMP-1, PMP-1A THRU PMP-1C, and PMP-2 THRU PMP-4.

ROADWAY STANDARD DRAWING

THE FOLLOWING ROADWAY STANDARDS AS APPEAR IN "ROADWAY STANDARD DRAWINGS" - N.C. DEPARTMENT OF TRANSPORTATION - RALEIGH, N.C., DATED JANUARY 2024 ARE APPLICABLE TO THIS PROJECT AND BY REFERENCE HEREBY ARE CONSIDERED A PART OF THESE PLANS:

Table with 2 columns: STD. NO., TITLE. Lists standards from 1205.01 to 1264.02.

PAVEMENT MARKING SCHEDULE

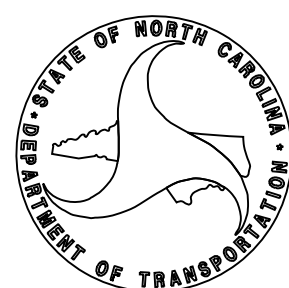
Table with 2 columns: Marking Code (T1-T46), Description. Lists various thermoplastic marking types and their specifications.

GENERAL NOTES

- THE FOLLOWING GENERAL NOTES APPLY AT ALL TIMES FOR THE DURATION OF THE CONSTRUCTION PROJECT... A) INSTALL PAVEMENT MARKINGS... B) TIE PROPOSED PAVEMENT MARKING LINES... C) REMOVE/REPLACE ANY CONFLICTING/DAMAGED PAVEMENT MARKINGS... D) PASSING ZONES WILL BE DETERMINED... E) UNLESS OTHERWISE SPECIFIED, HEATED-IN-PLACE THERMOPLASTIC MAY BE USED...

PLAN REVIEWED BY: N.C.D.O.T. SIGNING AND DELINEATION UNIT

MITCH EATON, P.E. SIGNING & DELINEATION REGIONAL ENGINEER STACEY JOHNS SIGNING & DELINEATION PROJECT DESIGN ENGINEER



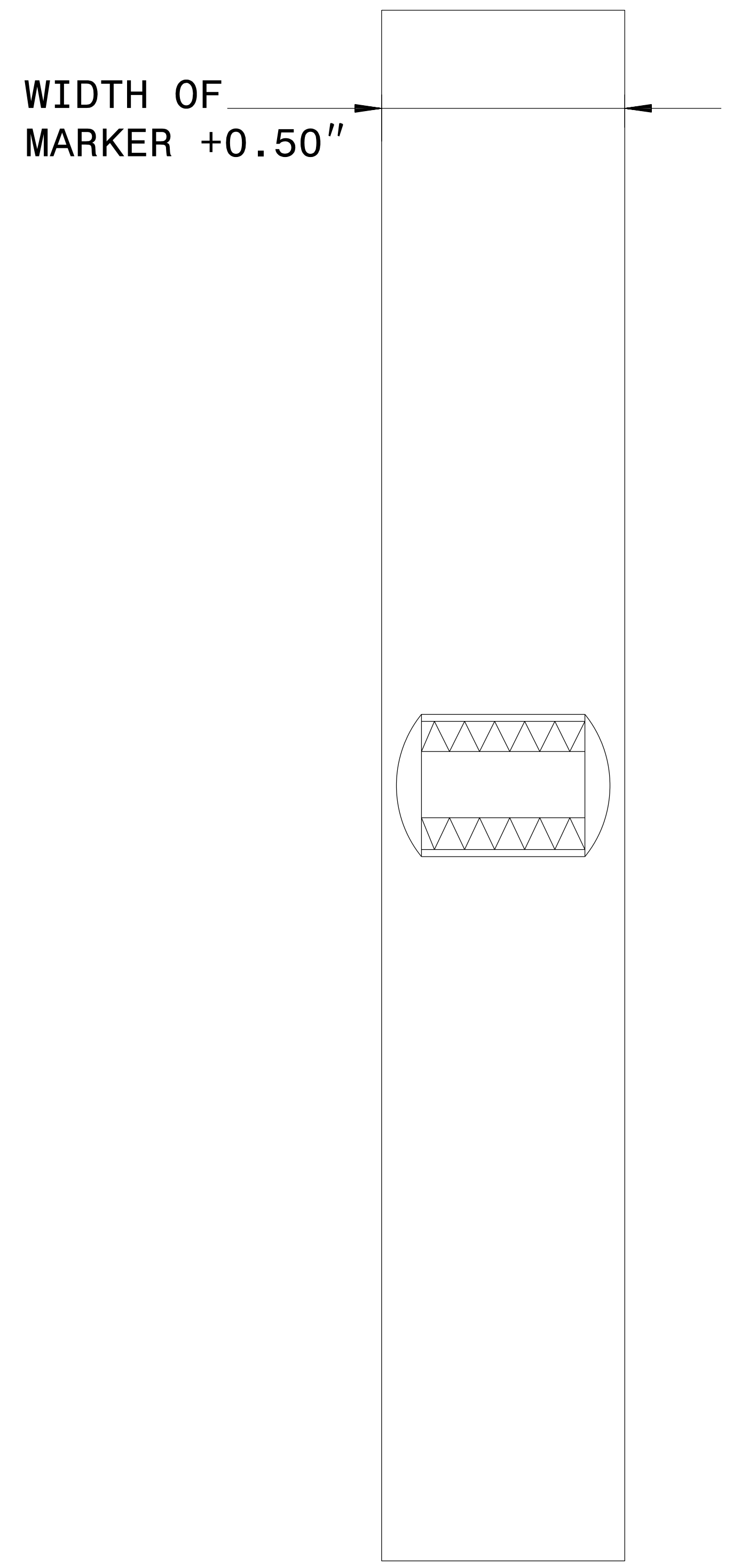
PLAN PREPARED BY: HDR ENGINEERING, INC. OF THE CAROLINAS

RON KING, P.E. SIGNING & DELINEATION PROJECT DESIGN ENGINEER CHRIS HARNDEN SIGNING & DELINEATION PROJECT DESIGN TECHNICIAN

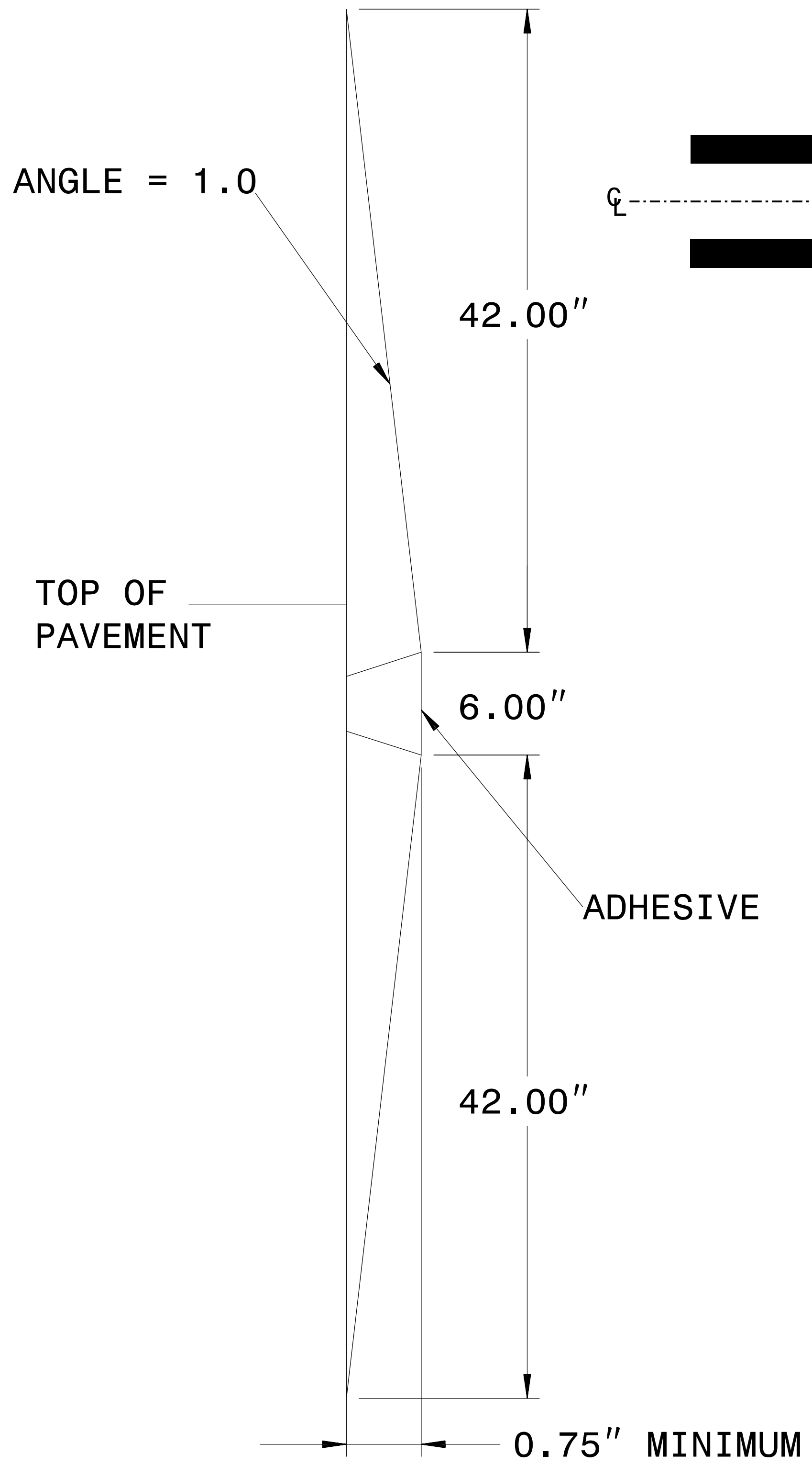


PLOT DRIVER: NCDOT... PENTABLE: NCDOT... USER: CHARNDEN... FILE: p:\w\hdr\users\01\HDR\_US\_Eost... DATE: 9/9/2024... TIME: 3:13:25 PM

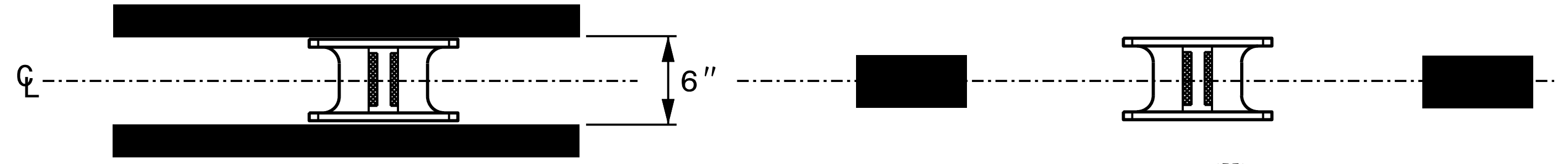
### PLAN VIEW



### SECTION VIEW



### MARKER SPACING



Renee B. Roach, PE

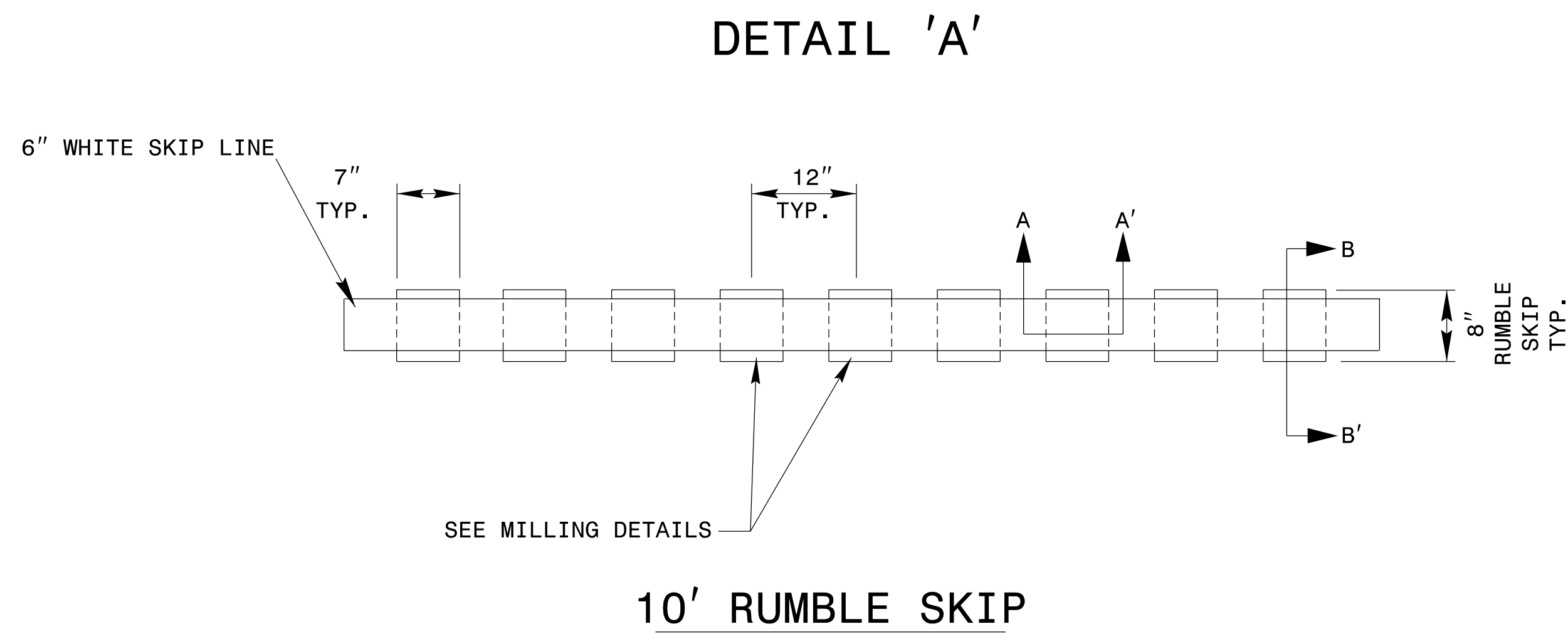
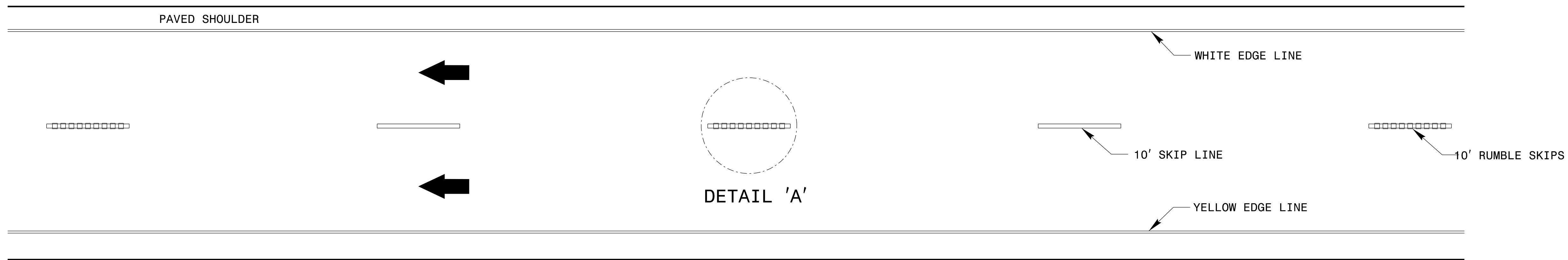
9/6/2024

#### NOTES:

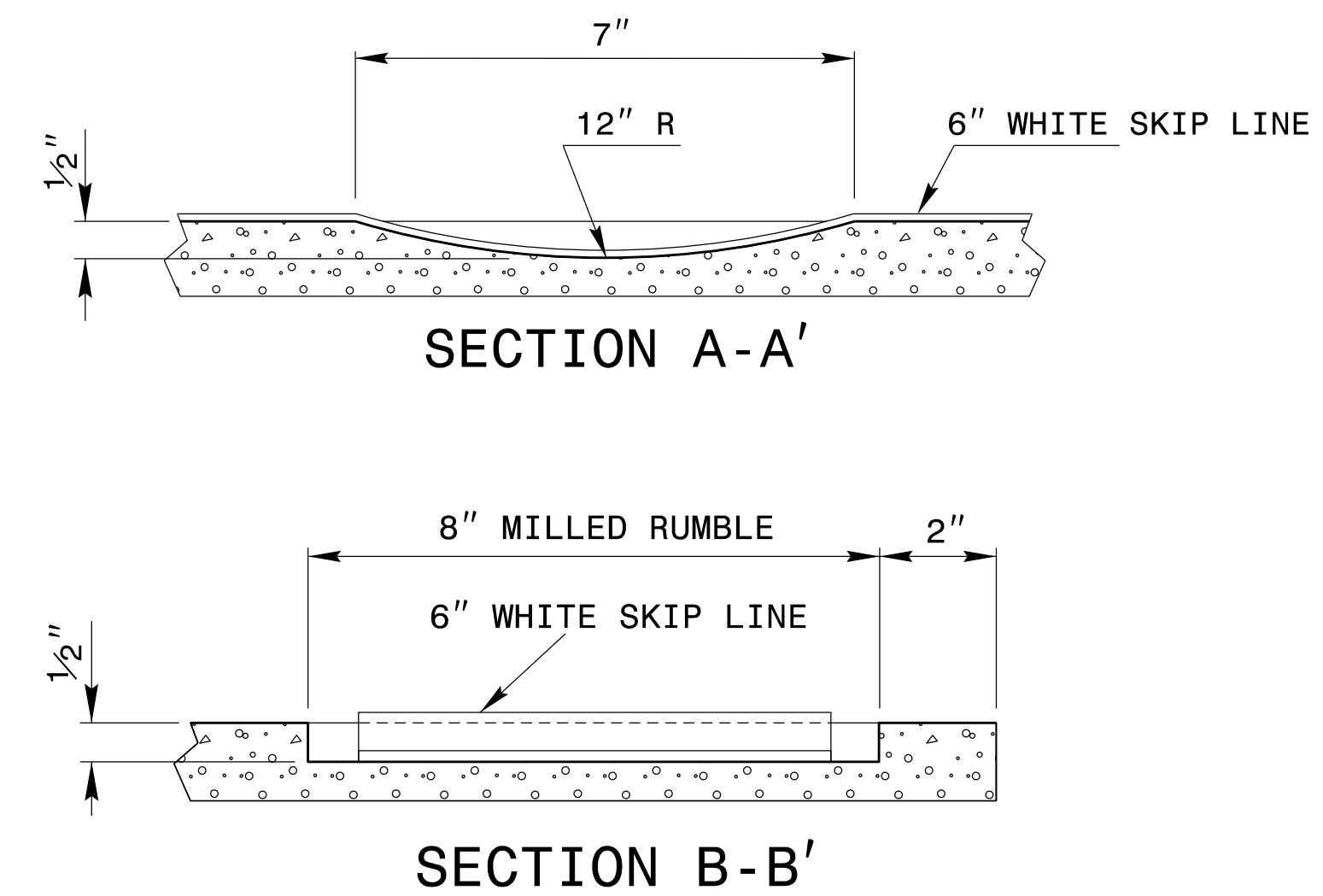
1. THE PAVEMENT SHALL BE SAW CUT TO THE DIMENSIONS SHOWN.
2. THE SAW CUT AREA MUST BE DRY AND FREE OF DUST, DIRT OR ANY MATERIAL WHICH WILL ADVERSELY AFFECT THE BOND OF THE ADHESIVE.
3. INSTALL MARKERS WITH APPROVED ADHESIVE. ADHESIVE SHOULD NOT BE ALLOWED TO BUILD UP IN FRONT OF MARKER LENS.
4. THE MARKER AND THE ADHESIVE PAD SHALL NOT EXCEED THE TOP OF THE PAVEMENT SURFACE. DEPTH = 0.75" MINIMUM.
5. RECESSED MARKERS INSTALLED ON CONCRETE PAVEMENT SHOULD BE INSTALLED A MINIMUM OF 2" FROM THE PAVEMENT JOINT OR EDGE

<b>CONTRACTS STANDARDS AND DEVELOPMENT UNIT</b>	
Office 919-707-8950 FAX 919-250-4119	
<b>DETAIL OF INLAID RAISED PAVEMENT MARKER</b>	
ORIGINAL BY: rgwatson	DATE: 02-06-2024
MODIFIED BY:	DATE:
CHECKED BY:	DATE:
FILE SPEC.:	

# LANE TREATMENT



### MILLING/MARKING DETAILS

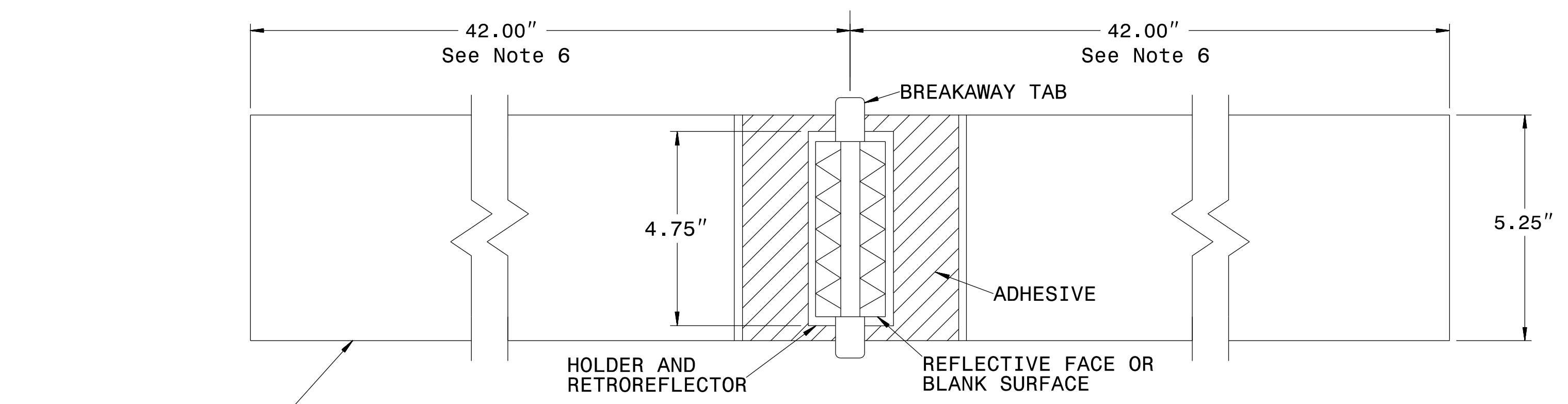


9/6/2024

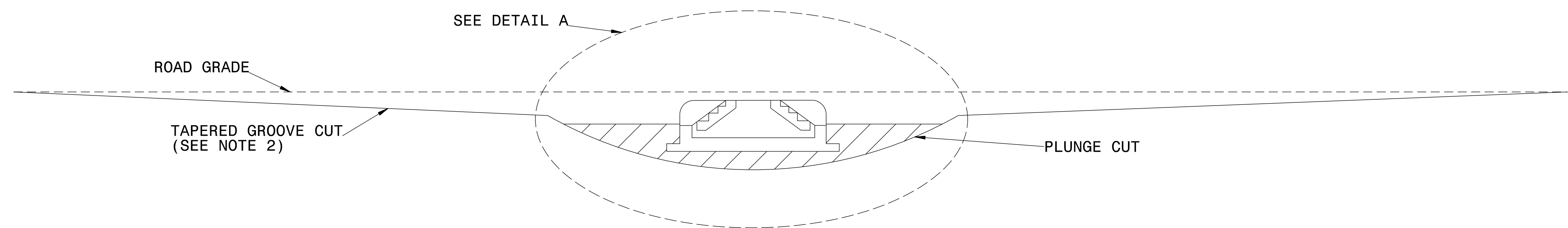
**NOTES:**

- 1) USING A VACUUM IN THE SAME OPERATION, REMOVE ALL DEBRIS FROM THE MILLINGS JUST PRIOR TO PLACING ANY PAVEMENT MARKINGS.
- 2) ENSURE GLASS BEADS ARE SPREAD UNIFORMLY OVER THE ENTIRE SURFACE OF PAVEMENT MARKING.
- 3) MILL RUMBLES EVERY OTHER SKIP AS SHOWN.
- 4) SEE PLANS FOR MARKING THICKNESS

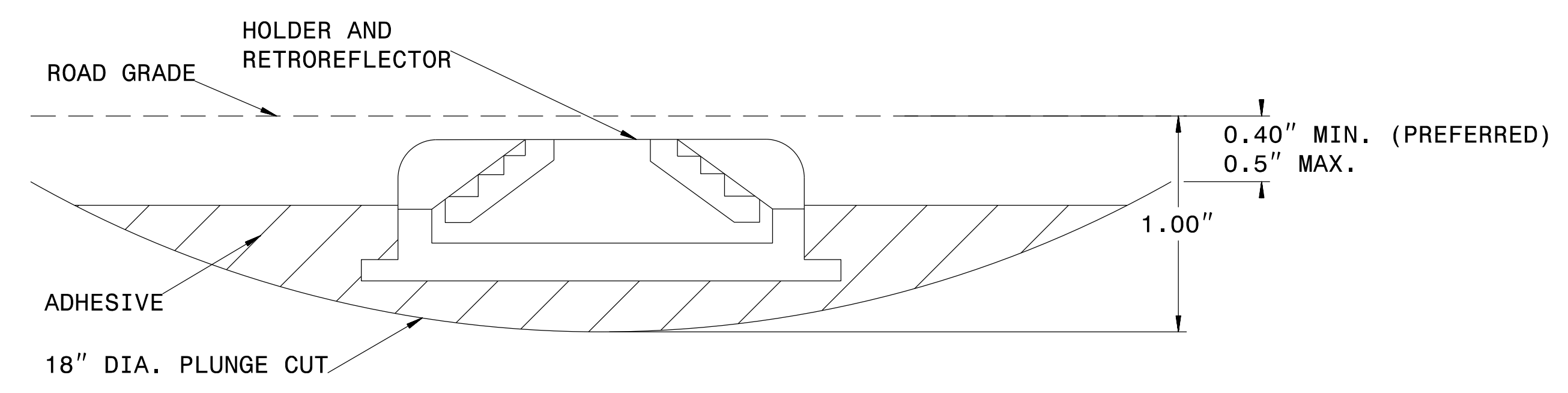
<b>CONTRACTS STANDARDS AND DEVELOPMENT UNIT</b>	
Office 919-707-8950	FAX 919-250-4119
<b>DETAIL OF MILLED RUMBLE SKIPS</b>	
ORIGINAL BY: <u>rgwatson</u>	DATE: <u>02-06-2024</u>
MODIFIED BY: _____	DATE: _____
CHECKED BY: _____	DATE: _____
FILE SPEC.: _____	



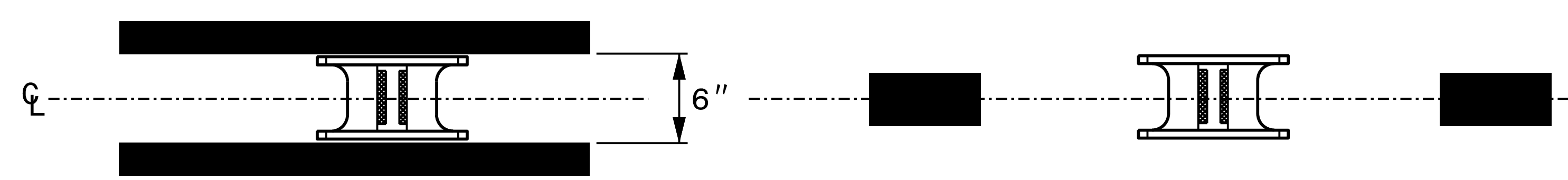
**PLAN VIEW - TANGENT SECTIONS**



**PROFILE VIEW**



**DETAIL A**



**MARKER SPACING**

**NOTES:**

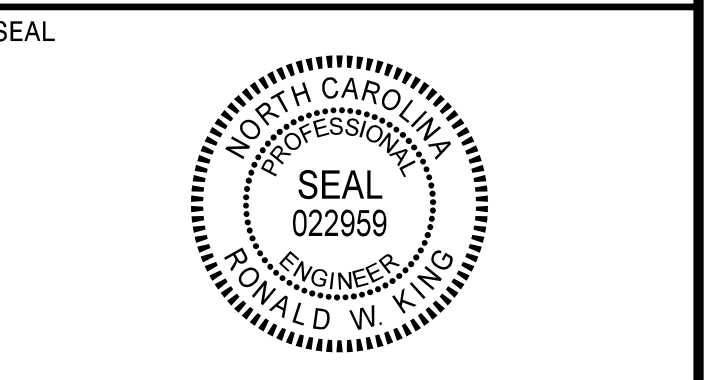
1. ALL GROOVE EDGES SHALL BE AT LEAST 2 INCHES FROM ANY SEAM OR PAVEMENT JOINT
2. GROOVE CUTS MAY BE TAPERED OR BEVELED. TAPERED CUTS SHALL START AT ROAD LEVEL ON EACH END AND TAPER AT A FIXED RATE AS SHOWN ON THE PROFILE VIEW. BEVELED GROOVE CUTS SHALL BE 0.5" MAXIMUM DEPTH (0.4" PREFERRED), AND SHALL BE 0.4" MINIMUM DEPTH AT BOTH ENDS OF THE PLUNGE CUT.
3. GROOVE AND PLUNGE CUT SHALL BE CLEAN AND DRY PRIOR TO PLACEMENT OF ADHESIVE.
4. THE EPOXY ADHESIVE SHALL BE THOROUGHLY MIXED UNTIL IT IS UNIFORM IN COLOR, AND APPLIED IN COLOR, AND APPLIED IN ACCORDANCE WITH THE MANUFACTURER'S INSTALLATION INSTRUCTIONS.
5. MARKER SHALL BE INSTALLED AS PER MANUFACTURER'S INSTALLATION INSTRUCTIONS WITH THE BREAKWAY TABS RESTING ON THE PAVEMENT SURFACE. THE EPOXY SHALL BE FILLED TO THE LEVEL OF THE TOP OF THE MARKER HOLDER. EPOXY SHALL NOT TOUCH THE RETROREFLECTOR.
6. TOTAL GROOVE LENGTH MAY BE SHORTENED TO 54" ON SHARP CURVES IF APPROVED BY THE ENGINEER. GROOVES SHALL NOT OVERLAP WITH LOOP DETECTOR WIRES.



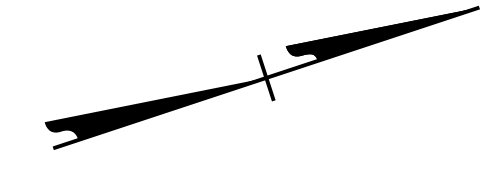
Renee B. Roach, P.E.

9/6/2024

<b>CONTRACTS STANDARDS AND DEVELOPMENT UNIT</b>	
Office 919-707-8950 FAX 919-250-4119	
<b>DETAIL OF INLAID CRADLE MARKER</b>	
ORIGINAL BY: <u>rgwatson</u>	DATE: <u>02-06-2024</u>
MODIFIED BY: _____	DATE: _____
CHECKED BY: _____	DATE: _____
FILE SPEC.: _____	



**DOCUMENT NOT CONSIDERED FINAL  
UNLESS ALL SIGNATURES COMPLETED**



NO MARKINGS ON  
-Y1- & -Y2-

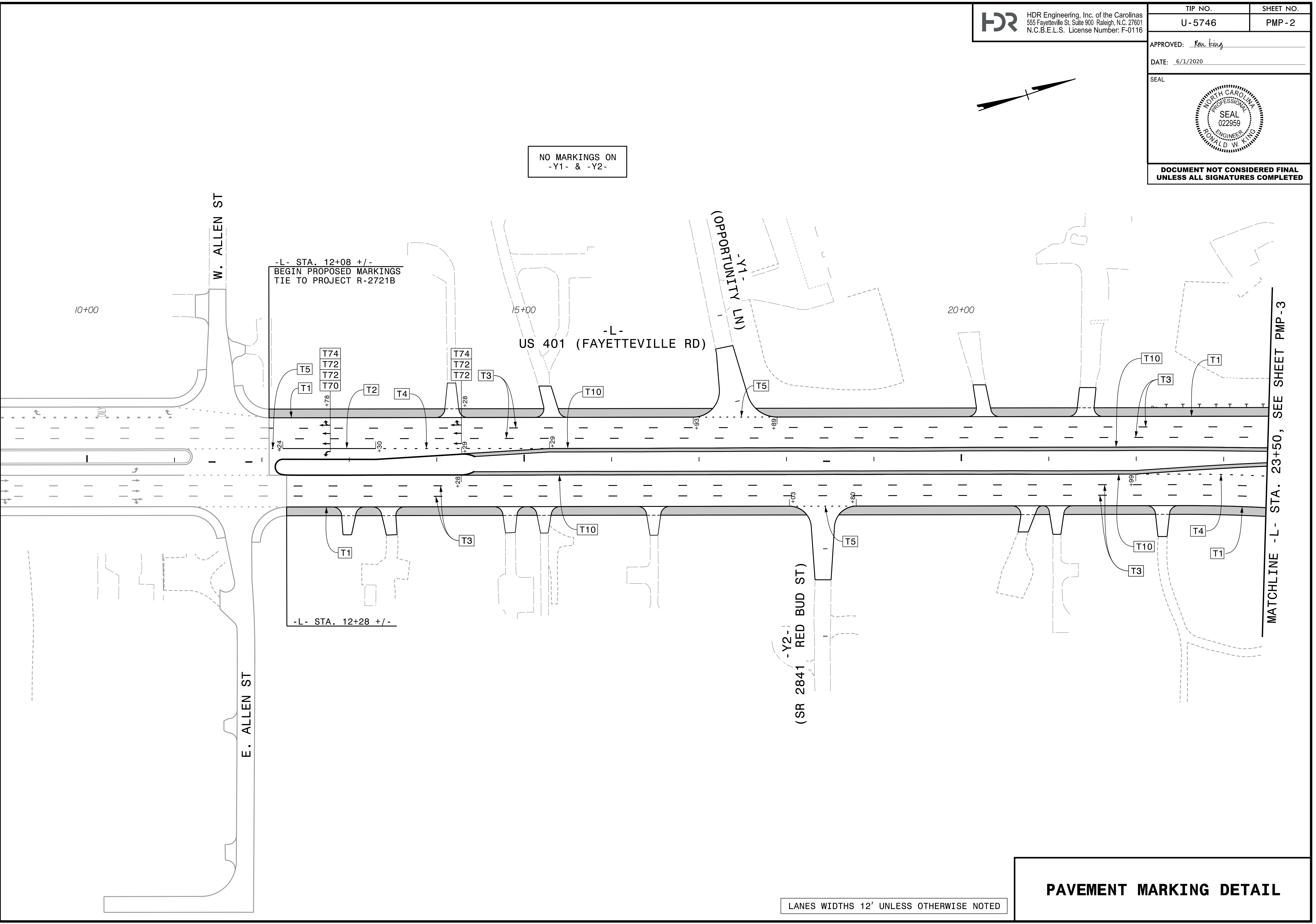
-L- STA. 12+08 +/-  
BEGIN PROPOSED MARKINGS  
TIE TO PROJECT R-2721B

-L- STA. 12+28 +/-

MATCHLINE -L- STA. 23+50, SEE SHEET PMP-3

PLOT DRIVER: NCDOT\_pdf\_color\_eng\_50.pht  
USER: CHARNDEN  
FILE: p:\p\h\users\charnd\US\_East\_01\Documents\NCDOT\2016\NCDOT\_Central\_Reg\_Div\_Plan\_Design\_0n-Cali\_M\_U-5746\_Task\_Order\_3\6\_0\_CAD\_BIM\6.2\_WIP\U-5746\_TO\_3\Traffic\ Pavement\_Marking\U5746\_PM\_PMP02

PENTABLE: NCDOT\_top.tbl  
TIME: 10:17:08 AM  
DATE: 6/1/2020



LANES WIDTHS 12' UNLESS OTHERWISE NOTED

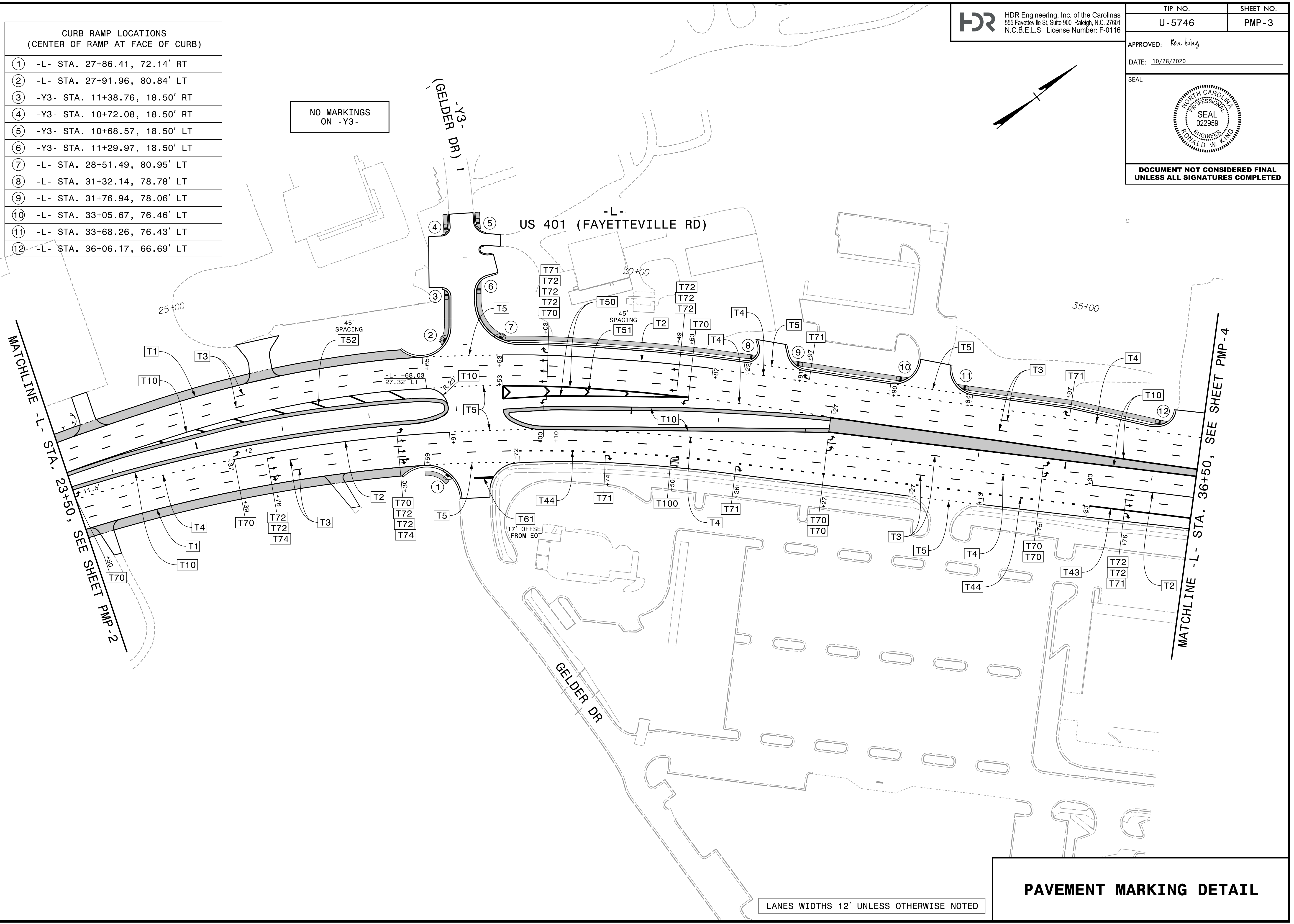
# PAVEMENT MARKING DETAIL



CURB RAMP LOCATIONS (CENTER OF RAMP AT FACE OF CURB)	
①	-L- STA. 27+86.41, 72.14' RT
②	-L- STA. 27+91.96, 80.84' LT
③	-Y3- STA. 11+38.76, 18.50' RT
④	-Y3- STA. 10+72.08, 18.50' RT
⑤	-Y3- STA. 10+68.57, 18.50' LT
⑥	-Y3- STA. 11+29.97, 18.50' LT
⑦	-L- STA. 28+51.49, 80.95' LT
⑧	-L- STA. 31+32.14, 78.78' LT
⑨	-L- STA. 31+76.94, 78.06' LT
⑩	-L- STA. 33+05.67, 76.46' LT
⑪	-L- STA. 33+68.26, 76.43' LT
⑫	-L- STA. 36+06.17, 66.69' LT

NO MARKINGS  
ON -Y3-

PLOT DRIVER: NCDOT... PENTABLE: NCDOT\_PMP.tbl  
USER: CHARNDEN DATE: 10/27/2020 TIME: 5:38:48 PM  
FILE: p:\pwhdr\users\charnden\US\_East\01\Documents\NCDOT\2016\NCDOT\_Central\_Reg\_Div\_Plan\_Design\_0n-Cali\_M\_U-5746\_Task\_Order\_3\6.0\_CAD\_BIM\6.2\_WIP\U-5746\_TO\_3\Traffic\ Pavement\_Markings\U5746\_PM\_PMP03



MATCHLINE -L- STA. 23+50, SEE SHEET PMP-2

MATCHLINE -L- STA. 36+50, SEE SHEET PMP-4

LANES WIDTHS 12' UNLESS OTHERWISE NOTED

**PAVEMENT MARKING DETAIL**

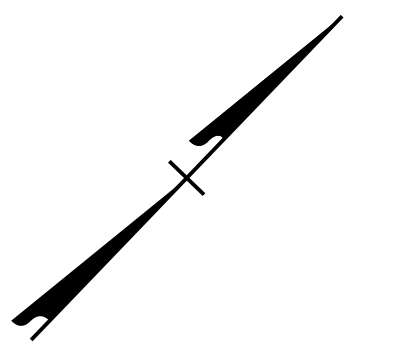
APPROVED: *Ron King*

DATE: 5/24/2024

SEAL

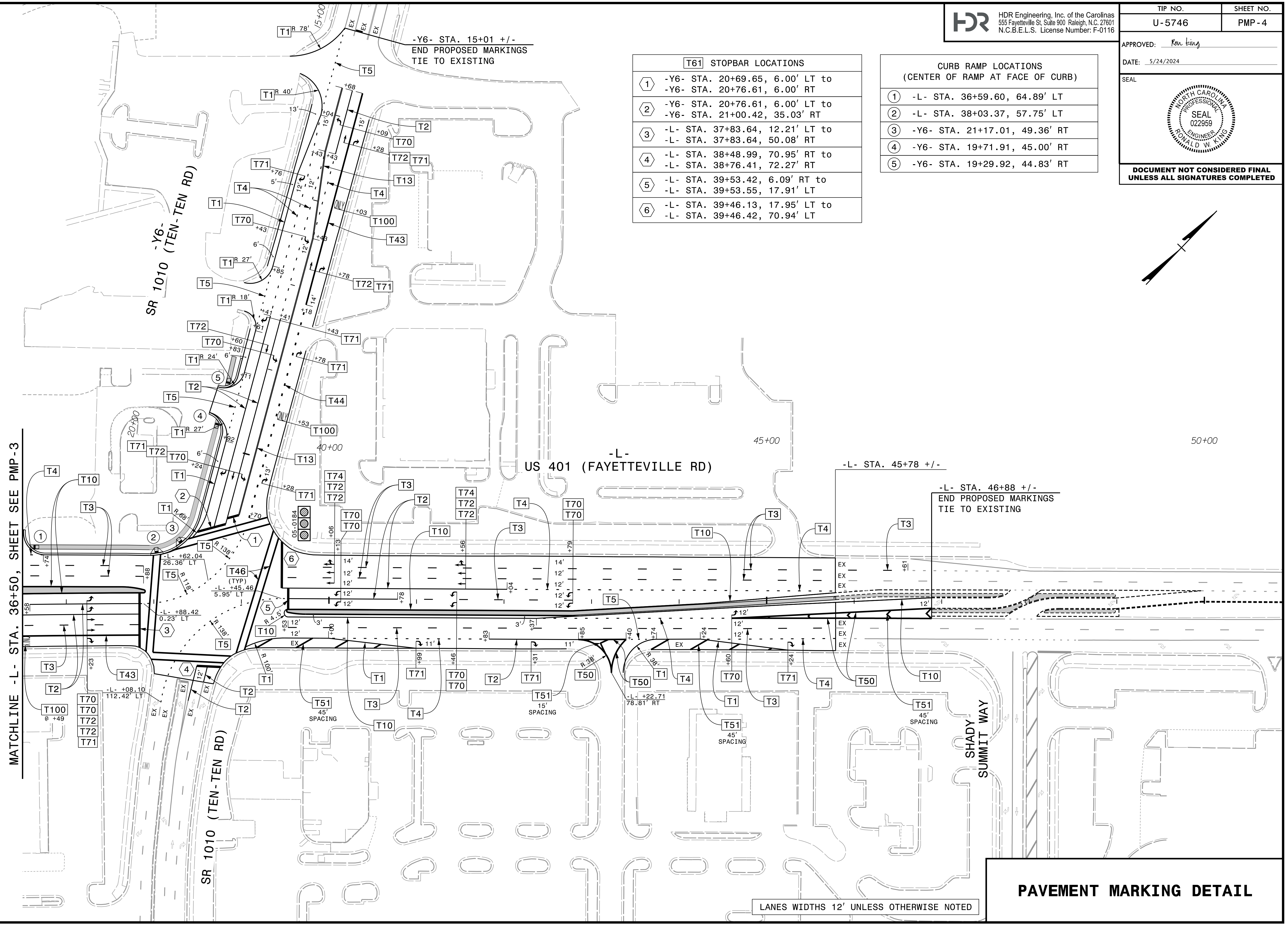


**DOCUMENT NOT CONSIDERED FINAL  
UNLESS ALL SIGNATURES COMPLETED**



T61 STOPBAR LOCATIONS	
①	-Y6- STA. 20+69.65, 6.00' LT to -Y6- STA. 20+76.61, 6.00' RT
②	-Y6- STA. 20+76.61, 6.00' LT to -Y6- STA. 21+00.42, 35.03' RT
③	-L- STA. 37+83.64, 12.21' LT to -L- STA. 37+83.64, 50.08' RT
④	-L- STA. 38+48.99, 70.95' RT to -L- STA. 38+76.41, 72.27' RT
⑤	-L- STA. 39+53.42, 6.09' RT to -L- STA. 39+53.55, 17.91' LT
⑥	-L- STA. 39+46.13, 17.95' LT to -L- STA. 39+46.42, 70.94' LT

CURB RAMP LOCATIONS (CENTER OF RAMP AT FACE OF CURB)	
①	-L- STA. 36+59.60, 64.89' LT
②	-L- STA. 38+03.37, 57.75' LT
③	-Y6- STA. 21+17.01, 49.36' RT
④	-Y6- STA. 19+71.91, 45.00' RT
⑤	-Y6- STA. 19+29.92, 44.83' RT



PLOT DRIVER: NCDOT\_color\_eng\_50.plt PENTABLE: NCDOT\_PMP.tbl  
 USER: CHARNDEN DATE: 5/23/2024 TIME: 9:14:28 AM  
 FILE: p:\p\h\users\charnd\US\_Eost\01\Documents\3322\10001702\10061989\c.o.cad.BTM\6.2.WTP\U-5746\_TO\_3\Traffic\pavement\_working\U5746\_PMP04.dgn

MATCHLINE -L- STA. 36+50, SHEET SEE PMP-3

**PAVEMENT MARKING DETAIL**