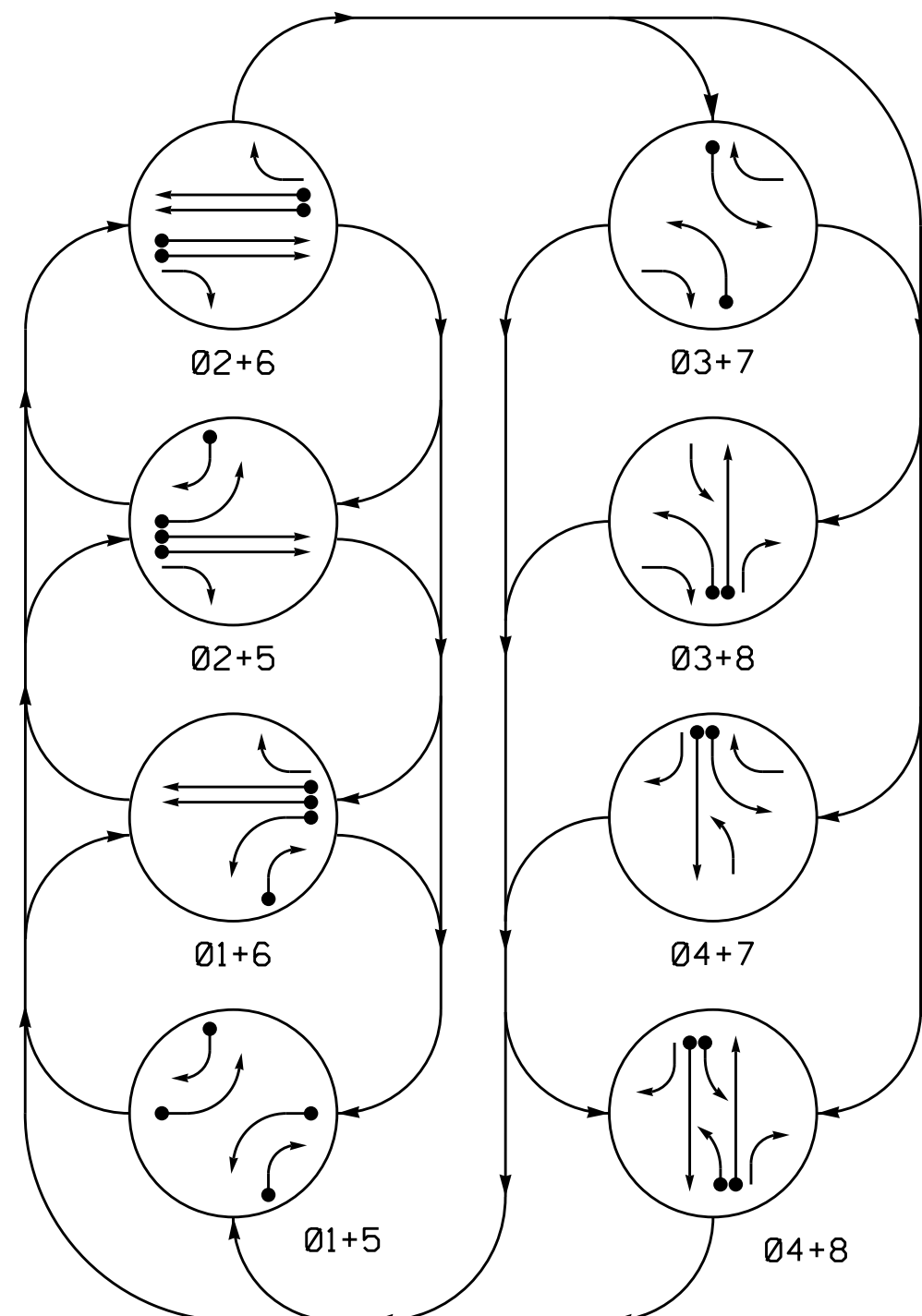
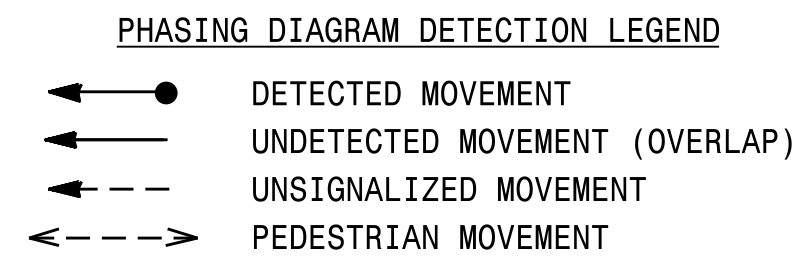
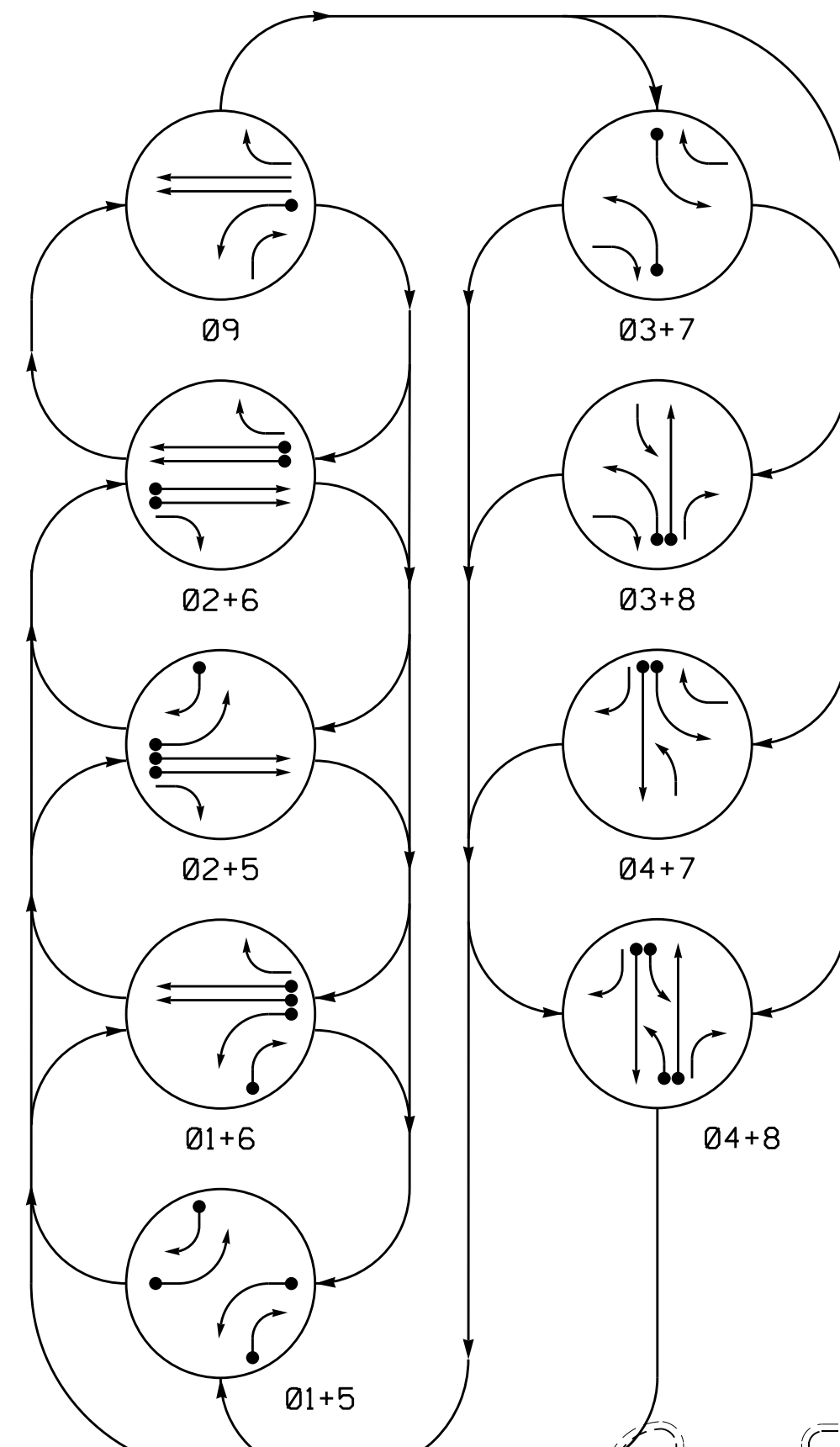


DEFAULT PHASING DIAGRAM



ALTERNATE PHASING DIAGRAM



DEFAULT PHASING TABLE OF OPERATION

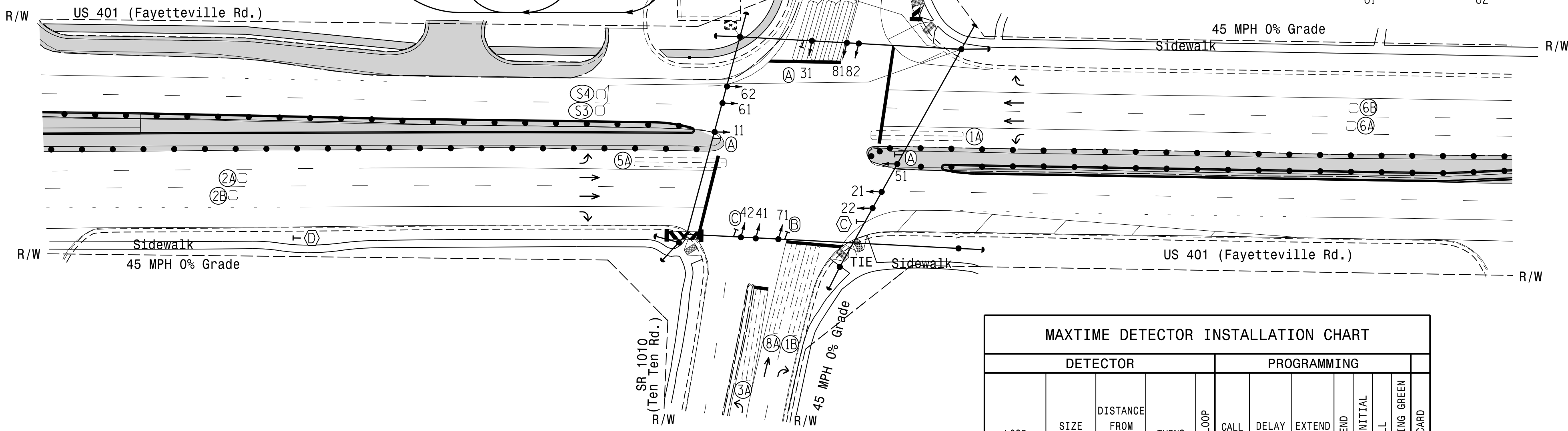
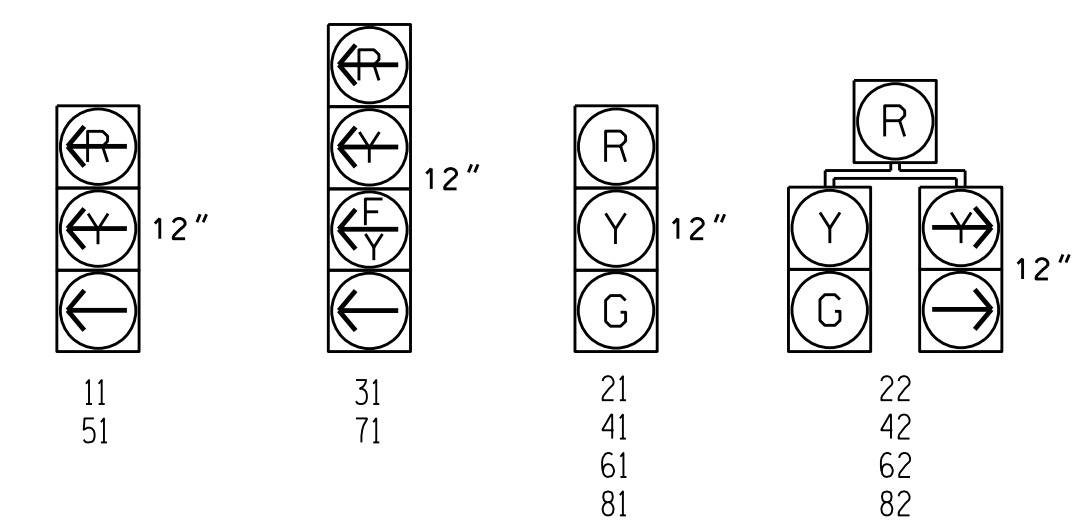
SIGNAL FACE	PHASE									
	01+5	01+6	02+5	02+6	03+7	03+8	04+7	04+8	FLASH	
11	---	---	---	---	---	---	---	---	---	---
21	R	R	G	G	R	R	R	R	R	R
22	R	R	G	G	R	R	R	R	R	R
31	---	---	---	---	---	---	---	---	---	---
41	R	R	R	R	R	R	R	G	G	R
42	---	---	---	---	---	---	---	G	G	---
51	---	---	---	---	---	---	---	---	---	---
61	R	G	R	G	R	R	R	R	R	R
62	R	G	R	G	R	R	R	R	R	R
71	---	---	---	---	---	---	---	---	---	---
81	R	R	R	R	R	G	R	G	R	R
82	---	---	---	---	---	---	---	G	R	---

ALTERNATE PHASING TABLE OF OPERATION

SIGNAL FACE	PHASE									
	01+5	01+6	02+5	02+6	03+7	03+8	04+7	04+8	FLASH	
11	---	---	---	---	---	---	---	---	---	---
21	R	R	G	G	R	R	R	R	R	R
22	R	R	G	G	R	R	R	R	R	R
31	---	---	---	---	---	---	---	---	---	---
41	R	R	R	R	R	R	R	G	G	R
42	---	---	---	---	---	---	---	R	R	---
51	---	---	---	---	---	---	---	---	---	---
61	R	G	R	G	R	R	R	R	R	R
62	R	G	R	G	R	R	R	R	R	R
71	---	---	---	---	---	---	---	---	---	---
81	R	R	R	R	R	R	G	R	G	R
82	---	---	---	---	---	---	---	R	G	---

SIGNAL FACE I.D.

All Heads L.E.D.

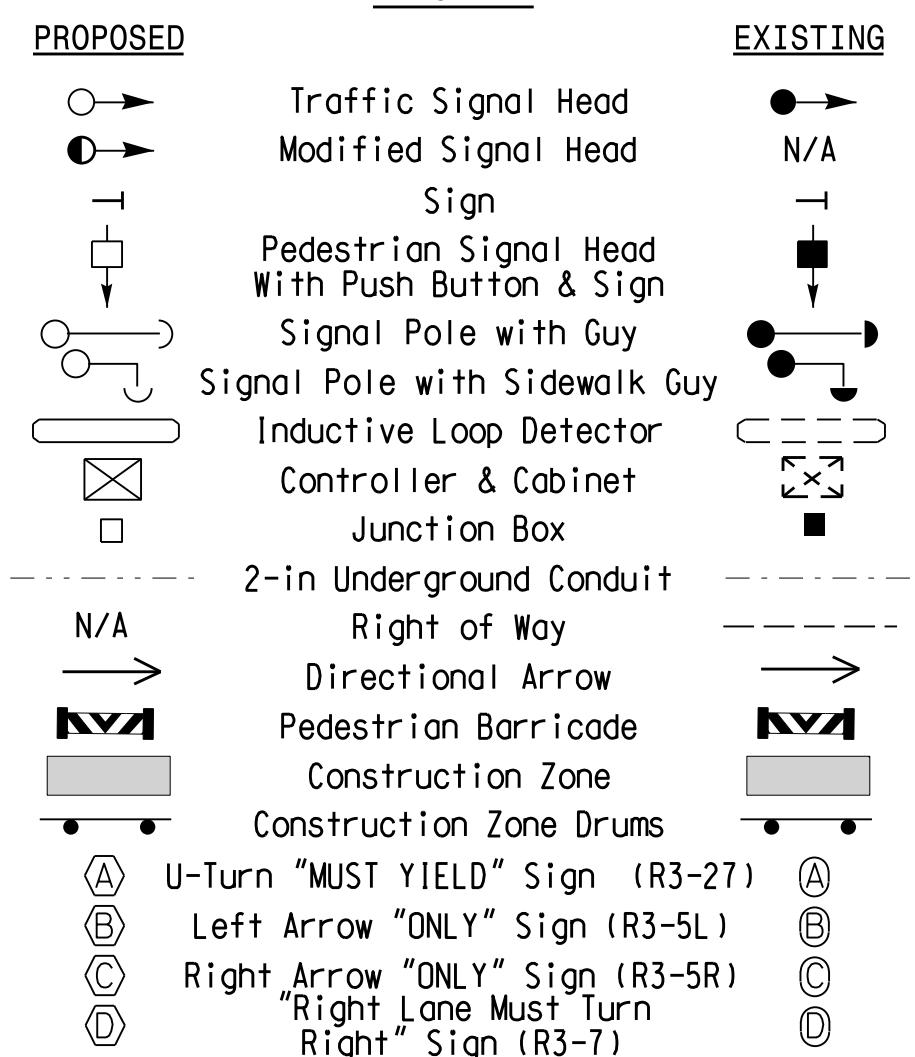


8 Phase Fully Actuated
(US 401 Closed Loop System #29)
Signal System #: D05-09_Garner

NOTES

- Refer to "Roadway Standard Drawings NCDOT" dated January 2024 and "Standard Specifications for Roads and Structures" dated January 2024.
- Do not program signal for late night flashing operation unless otherwise directed by the Engineer.
- Phase 1 and/or phase 5 may be lagged.
- Phase 3 and/or phase 7 may be lagged.
- Set all detector units to presence mode.
- Pavement markings are existing.
- The Division Traffic Engineer will determine the hours of use for each phasing plan.
- Maximum times shown in timing chart are for free-run operation only. Coordinated signal system timing values supersede these values.

LEGEND



MAXTIME TIMING CHART

FEATURE	PHASE										OL 7	OL 8
	1	2	3	4	5	6	7	8	9	10		
Walk *	-	-	-	-	-	-	-	-	-	-	-	-
Ped Clear *	-	-	-	-	-	-	-	-	-	-	-	-
Min Green	7	12	7	7	7	12	7	7	7	7	-	-
Passage *	2.0	6.0	2.0	2.0	2.0	6.0	2.0	2.0	2.0	2.0	-	-
Max 1 *	25	90	15	45	25	90	15	45	25	25	-	-
Yellow Change	3.0	4.5	3.0	4.5	3.0	4.5	3.0	4.5	3.0	3.0	3.0	4.5
Red Clear	3.3	1.3	3.4	1.9	3.4	1.3	2.6	1.9	3.3	3.3	3.3	1.3
Added Initial *	-	1.5	-	-	-	1.5	-	-	-	-	-	-
Maximum Initial *	-	34	-	-	-	34	-	-	-	-	-	-
Time Before Reduction *	-	15	-	-	-	15	-	-	-	-	-	-
Time To Reduce *	-	30	-	-	-	30	-	-	-	-	-	-
Minimum Gap	-	3.0	-	-	-	3.0	-	-	-	-	-	-
Advance Walk	-	-	-	-	-	-	-	-	-	-	-	-
Non Lock Detector	X	-	X	X	X	-	X	X	X	X	-	-
Vehicle Recall	-	MIN RECALL	-	-	-	MIN RECALL	-	-	-	-	-	-
Dual Entry	-	-	-	X	-	-	-	X	-	-	-	-

* These values may be field adjusted. Do not adjust Min Green and Extension times for phases 2 and 6 lower than what is shown. Min Green for all other phases should not be lower than 4 seconds.

MAXTIME DETECTOR INSTALLATION CHART

LOOP	SIZE (FT)	DISTANCE FROM STOPBAR (FT)	TURNS	NEW LOOP	PROGRAMMING							
					CALL PHASE	DELAY TIME	EXTEND TIME	EXTEND	ADDED INITIAL CALL	DELAY DURING GREEN	NEW CARD	
1A	6X40	0	2-4-2	-	1/9	-	-	-	X	-	X	-
1B	6X40	0	2-4-2	-	1	15.0	-	-	X	-	X	-
2A	6X6	300	5	-	2	-	-	-	X	X	X	-
2B	6X6	300	5	-	2	-	-	-	X	X	X	-
3A	6X40	0	2-4-2	-	3	15.0	-	-	X	-	X	-
4A	6X40	0	2-4-2	X	4	-	-	-	X	-	X	-
5A	6X40	0	2-4-2	-	5	-	-	-	X	-	X	-
5B	6X40	0	2-4-2	X	5	15.0	-	-	X	-	X	-
6A	6X6	300	5	-	6	-	-	-	X	-	X	-
6B	6X6	300	5	-	6	-	-	-	X	-	X	-
7A	6X40	0	2-4-2	X	7	15.0	-	-	X	-	X	-
8A	6X40	0	2-4-2	-	8	4 3.0	-	-	X	-	X	-
S3	6X6	+215	4	-	-	-	-	-	X	-	X	-
S4	6X6	+215	4	-	-	-	-	-	X	-	X	-

Signal Upgrade - Temporary Design 1 (TMP Phase 1 Step 2)

US 401 (Fayetteville Rd.)
at
SR 1010 (Ten-Ten Rd.)

Division 5 Wake County Fuquay-Varina

PLAN DATE: July 2024 REVIEWED BY:

PREPARED BY: I.O. Umozurike REVIEWED BY:

REVISIONS: _____ INIT. DATE

DOCUMENT NOT CONSIDERED FINAL UNLESS ALL SIGNATURES COMPLETED

SEAL

ROBERT J. ZIEBELL
PROFESSIONAL ENGINEER
026486

08/12/2024

SIG. INVENTORY NO. 05-018411

12-AUG-2024 11:02
 S:\IT\565\K15\SIGNAL\Signal\Central_Reg\0401v_5\U-5746\MAXTIME_Plan\05018411_sig_dsn_20240812.dgn
 P:\Ziebell