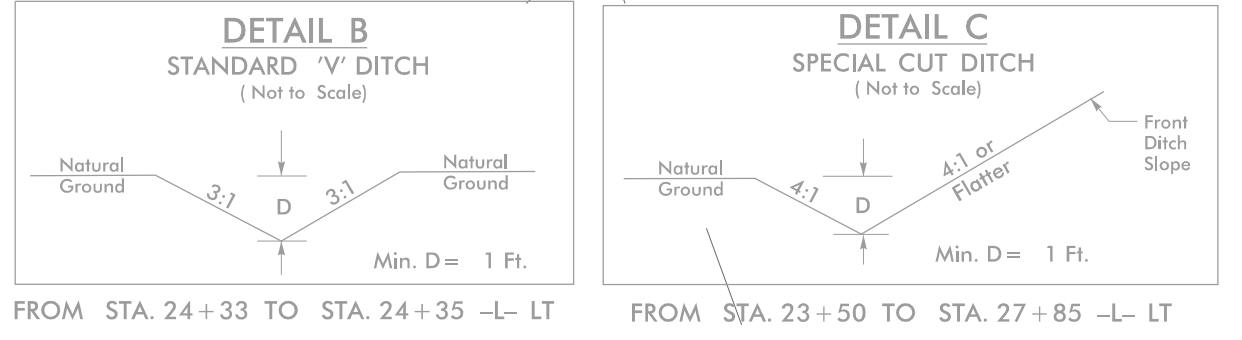


PROJECT REFERENCE NO.	SHEET NO.
U-5746	EC-8/CONST. 5
RW SHEET NO.	
ROADWAY DESIGN ENGINEER	HYDRAULICS ENGINEER

**HDR** HDR Engineering, Inc. of the Carolinas  
 555 Fayetteville St. Suite 900 Raleigh, N.C. 27601  
 N.C.B.E.L.S. License Number: F-0116



27  
NO CLAIM

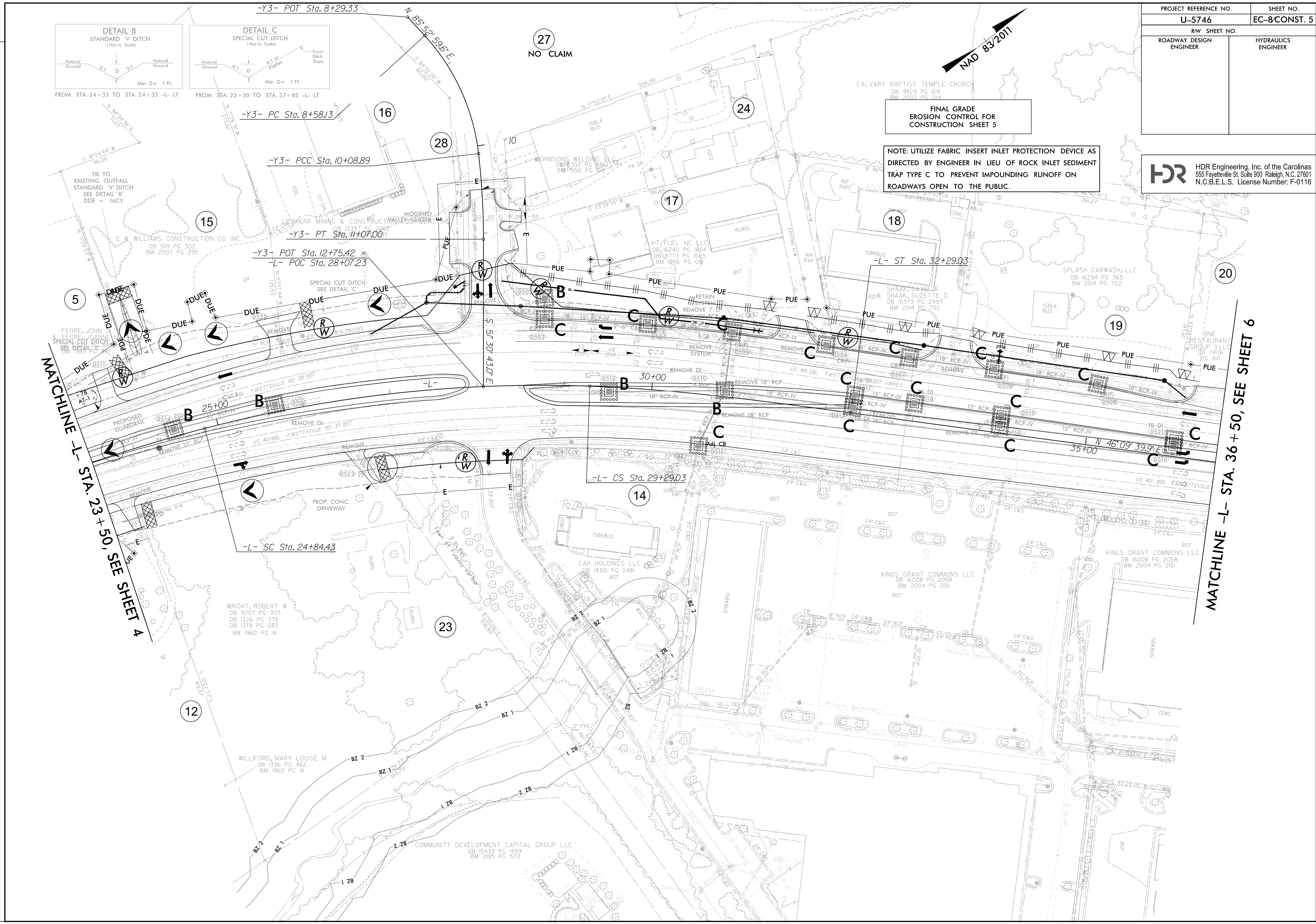


FINAL GRADE  
EROSION CONTROL FOR  
CONSTRUCTION SHEET 5

NOTE: UTILIZE FABRIC INSERT INLET PROTECTION DEVICE AS DIRECTED BY ENGINEER IN LIEU OF ROCK INLET SEDIMENT TRAP TYPE C TO PREVENT IMPOUNDING RUNOFF ON ROADWAYS OPEN TO THE PUBLIC.

MATCHLINE -L- STA. 23 + 50, SEE SHEET 4

MATCHLINE -L- STA. 36 + 50, SEE SHEET 6



REVISIONS

PLOT DRIVER: NCDOT\_color\_eng\_100.plt  
 USER: DWAGNER  
 FILE: \

PENTABLE: NCDOT\_EC\_FINAL\_BW.tbl  
 TIME: 9:10:56 AM

DATE: 5/21/2024