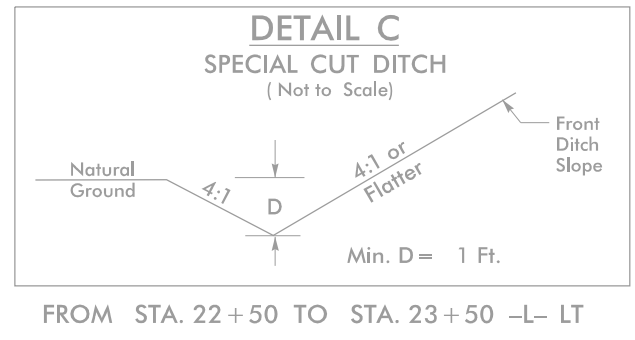
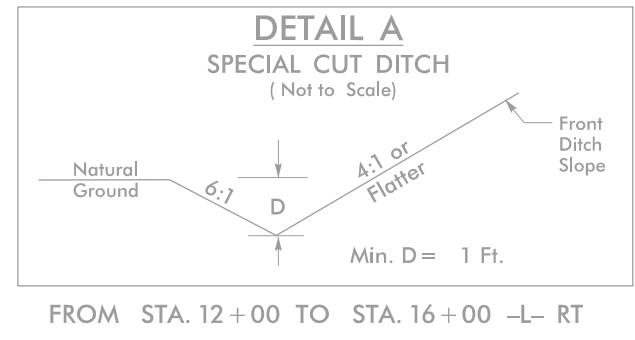


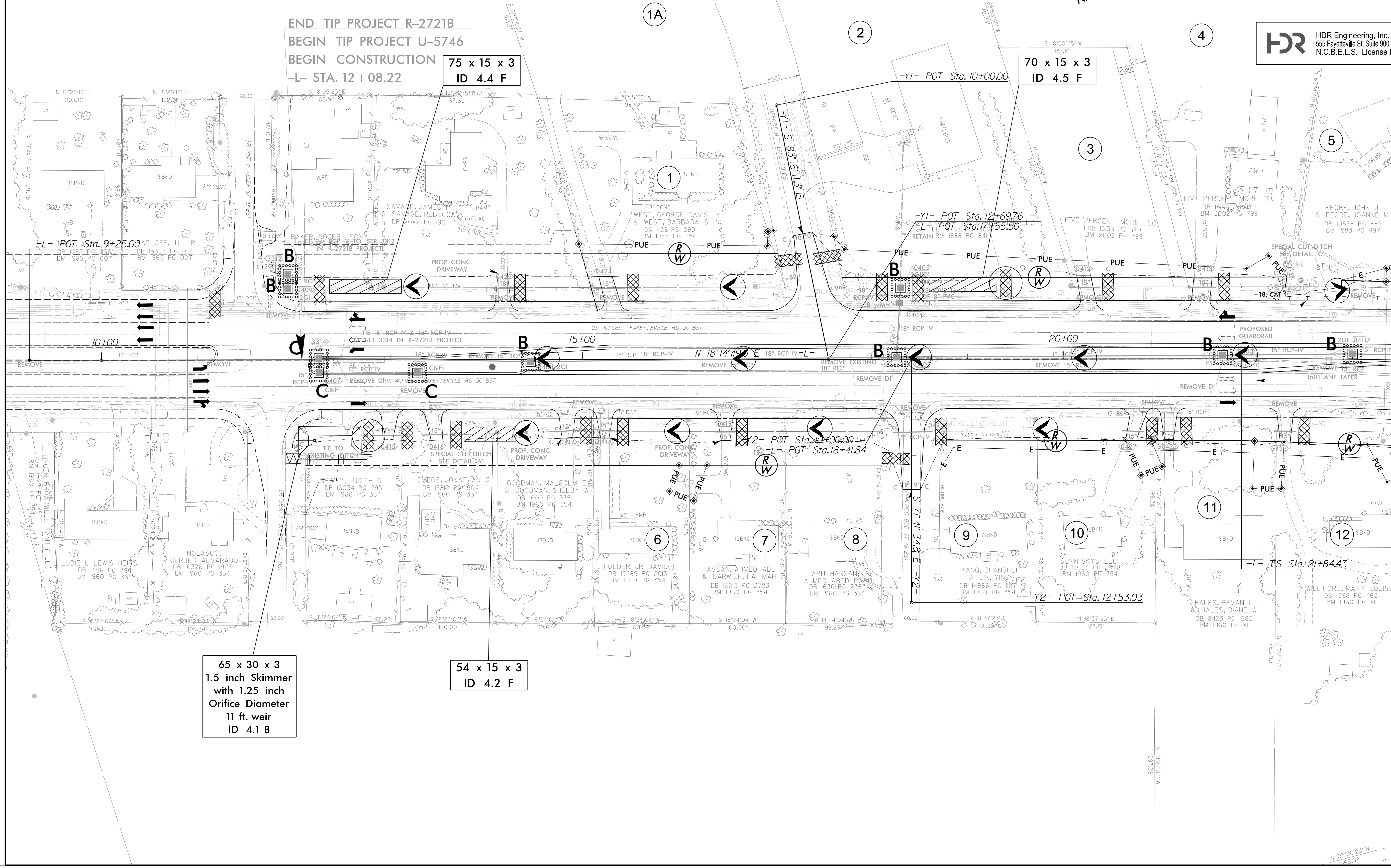
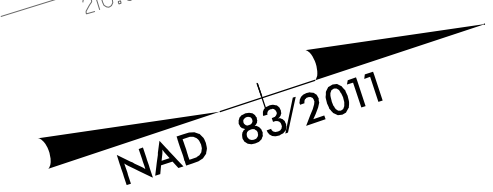
PROJECT REFERENCE NO.	SHEET NO.
U-5746	EC-7/CONST. 4
RW SHEET NO.	
ROADWAY DESIGN ENGINEER	HYDRAULICS ENGINEER

HDR HDR Engineering, Inc. of the Carolinas
 555 Fayetteville St. Suite 900 Raleigh, N.C. 27601
 N.C.B.E.L.S. License Number: F-0116



FINAL GRADE EROSION CONTROL FOR CONSTRUCTION SHEET 4

NOTE: UTILIZE FABRIC INSERT INLET PROTECTION DEVICE AS DIRECTED BY ENGINEER IN LIEU OF ROCK INLET SEDIMENT TRAP TYPE C TO PREVENT IMPOUNDING RUNOFF ON ROADWAYS OPEN TO THE PUBLIC.



REVISIONS

MATCHLINE -L- STA. 23+50, SEE SHEET 5

PLOT DRIVER: NCDOT_color_eng_100.plt
 USER: DWAGNER
 DATE: 5/21/2024
 TIME: 9:10:49 AM
 FILE: \