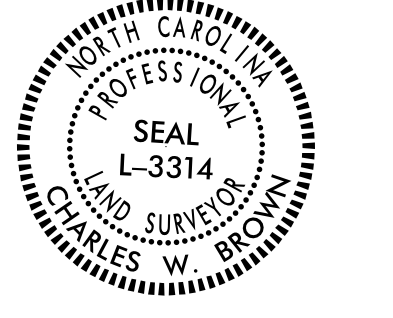


Location and Surveys



DOCUMENT NOT CONSIDERED FINAL UNLESS ALL SIGNATURES COMPLETED

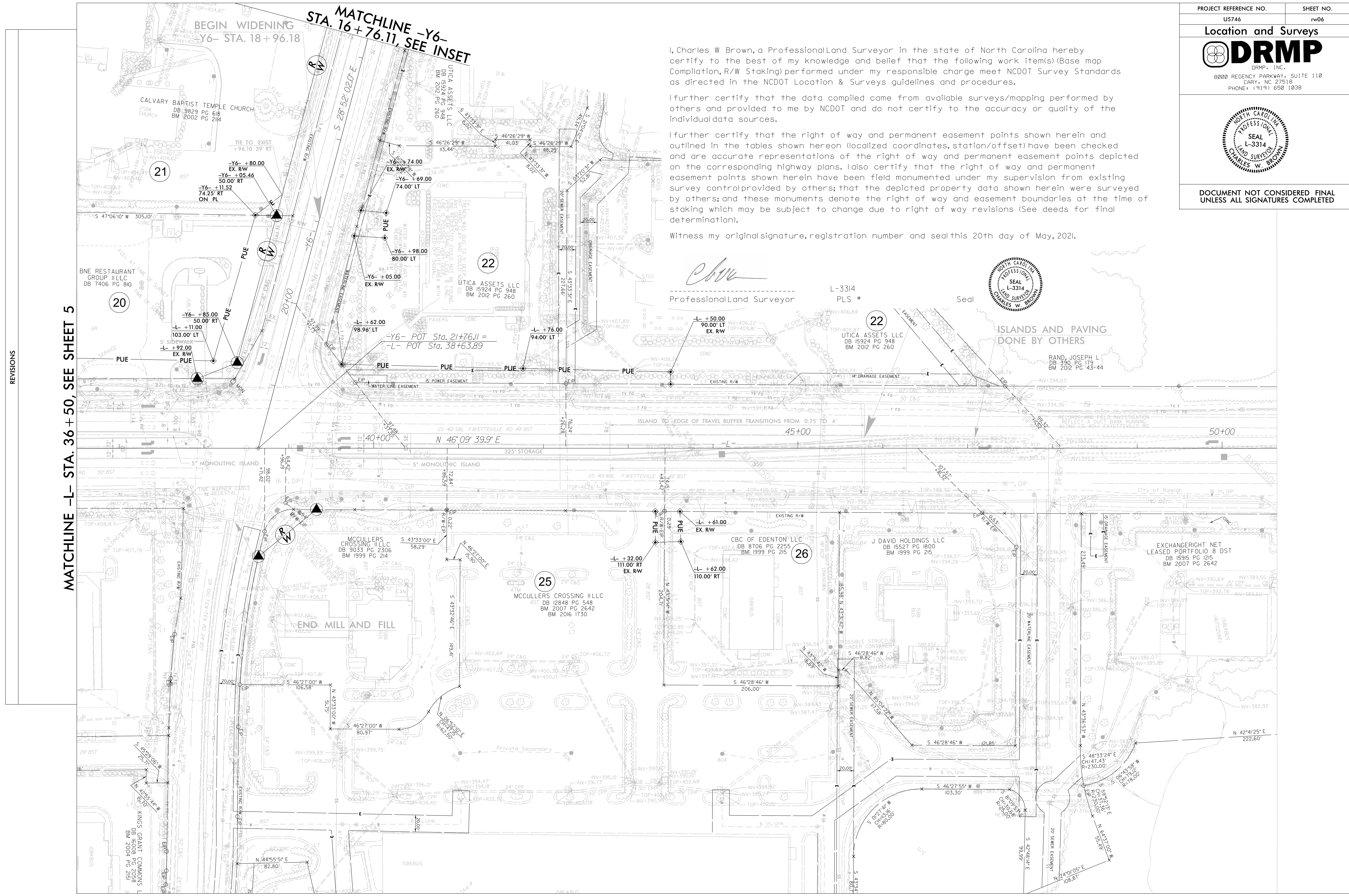
I, Charles W Brown, a Professional Land Surveyor in the state of North Carolina hereby certify to the best of my knowledge and belief that the following work item(s) (Base map Compilation, R/W Staking) performed under my responsible charge meet NCDOT Survey Standards as directed in the NCDOT Location & Surveys guidelines and procedures.

I further certify that the data compiled came from available surveys/mapping performed by others and provided to me by NCDOT and do not certify to the accuracy or quality of the individual data sources.

I further certify that the right of way and permanent easement points shown herein and outlined in the tables shown hereon (localized coordinates, station/offset) have been checked and are accurate representations of the right of way and permanent easement points depicted on the corresponding highway plans. I also certify that the right of way and permanent easement points shown herein have been field monumented under my supervision from existing survey control provided by others; that the depicted property data shown herein were surveyed by others; and these monuments denote the right of way and easement boundaries at the time of staking which may be subject to change due to right of way revisions (See deeds for final determination).

Witness my original signature, registration number and seal this 20th day of May, 2021.

*Charles W. Brown*  
Professional Land Surveyor L-3314 PLS # Seal



REVISIONS

MATCHLINE -L- STA. 36 + 50, SEE SHEET 5

BEGIN WIDENING STA. 18 + 96.18  
MATCHLINE -Y6- STA. 16 + 76.11, SEE INSET

ISLANDS AND PAVING DONE BY OTHERS

CALVARY BAPTIST TEMPLE CHURCH  
DB 9829 PG 618  
BM 2002 PG 214

BNE RESTAURANT GROUP I LLC  
DB 7406 PG 810

UTICA ASSETS LLC  
DB 15924 PG 948  
BM 2012 PG 260

UTICA ASSETS LLC  
DB 15924 PG 948  
BM 2012 PG 260

UTICA ASSETS LLC  
DB 15924 PG 948  
BM 2012 PG 260

RAND, JOSEPH L  
DB 390 PG 179  
BM 2012 PG 43-44

MCCULLERS CROSSING HILL  
DB 9033 PG 2306  
BM 1999 PG 214

MCCULLERS CROSSING HILL  
DB 12848 PG 548  
BM 2007 PG 2642  
BM 2016 1730

CBC OF EDENTON LLC  
DB 8706 PG 2255  
BM 1999 PG 215

J DAVID HOLDINGS LLC  
DB 15527 PG 1800  
BM 1999 PG 215

EXCHANGERIGHT NET LEASED PORTFOLIO 8 DST  
DB 15915 PG 1215  
BM 2007 PG 2642

KINGS GRANT COMMONS L  
DB 16008 PG 2058  
BM 2004 PG 2181