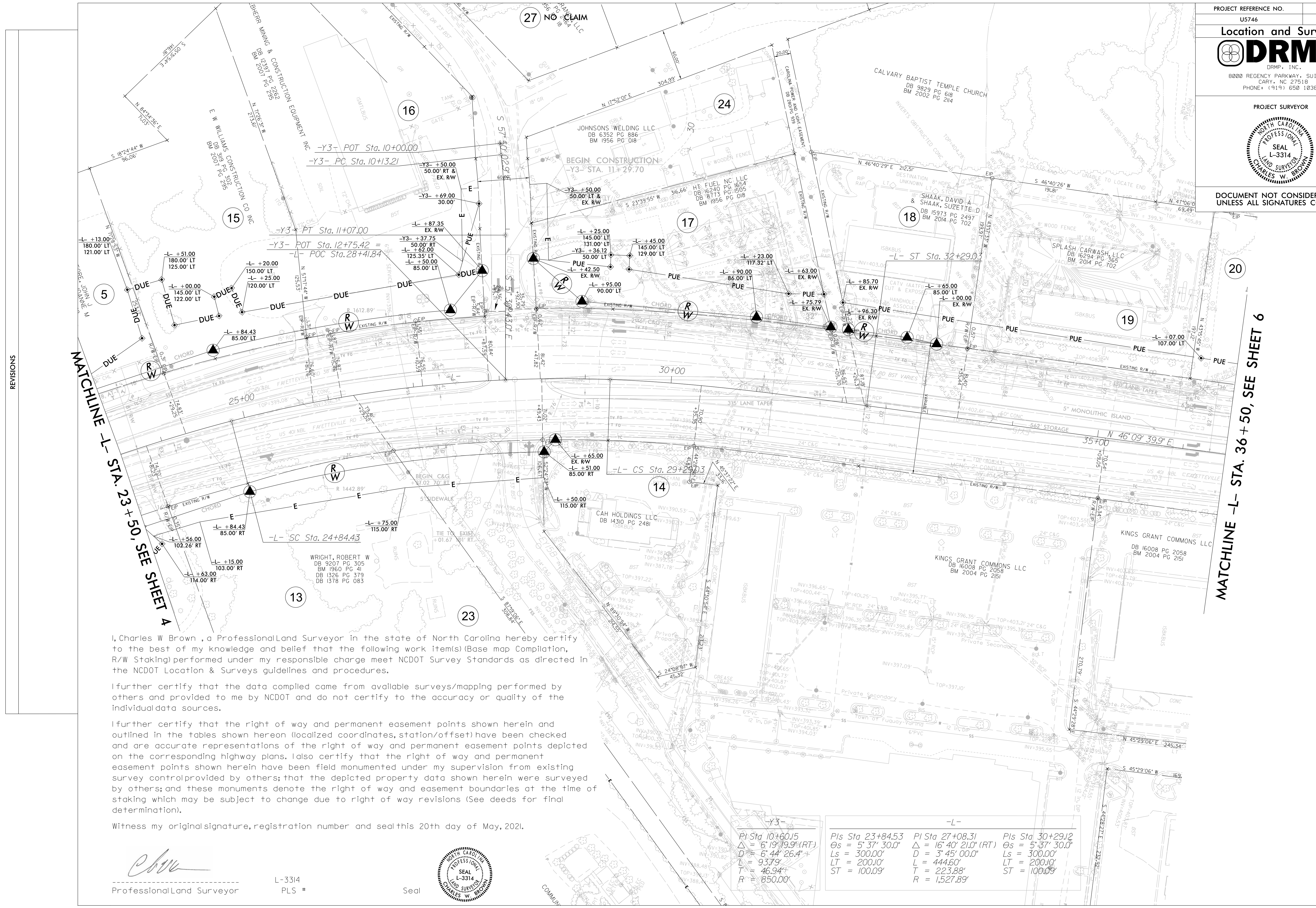




DOCUMENT NOT CONSIDERED FINAL  
 UNLESS ALL SIGNATURES COMPLETED



REVISIONS

MATCHLINE -L- STA. 23 + 50, SEE SHEET A

MATCHLINE -L- STA. 36 + 50, SEE SHEET 6

I, Charles W Brown, a Professional Land Surveyor in the state of North Carolina hereby certify to the best of my knowledge and belief that the following work item(s) (Base map Compilation, R/W Staking) performed under my responsible charge meet NCDOT Survey Standards as directed in the NCDOT Location & Surveys guidelines and procedures.

I further certify that the data compiled came from available surveys/mapping performed by others and provided to me by NCDOT and do not certify to the accuracy or quality of the individual data sources.

I further certify that the right of way and permanent easement points shown herein and outlined in the tables shown hereon (localized coordinates, station/offset) have been checked and are accurate representations of the right of way and permanent easement points depicted on the corresponding highway plans. I also certify that the right of way and permanent easement points shown herein have been field monumented under my supervision from existing survey control provided by others; that the depicted property data shown herein were surveyed by others; and these monuments denote the right of way and easement boundaries at the time of staking which may be subject to change due to right of way revisions (See deeds for final determination).

Witness my original signature, registration number and seal this 20th day of May, 2021.

*Charles W. Brown*  
 Professional Land Surveyor

L-3314  
 PLS #

Seal



-Y3- PI Sta 10+60.15 $\Delta = 6' 19'' 19.9'' (RT)$ $D = 6' 44'' 26.4''$ $L = 93.79'$ $T = 46.94'$ $R = 850.00'$	-L- Pls Sta 23+84.53 $\Delta = 5' 37'' 30.0''$ $Ls = 300.00'$ $L = 200.10'$ $ST = 100.09'$	-L- PI Sta 27+08.31 $\Delta = 16' 40'' 21.0'' (RT)$ $D = 3' 45'' 00.0''$ $L = 444.60'$ $T = 223.88'$ $R = 1,527.89'$	-L- Pls Sta 30+29.12 $\Delta = 5' 37'' 30.0''$ $Ls = 300.00'$ $L = 200.10'$ $ST = 100.09'$
--	---	--	---