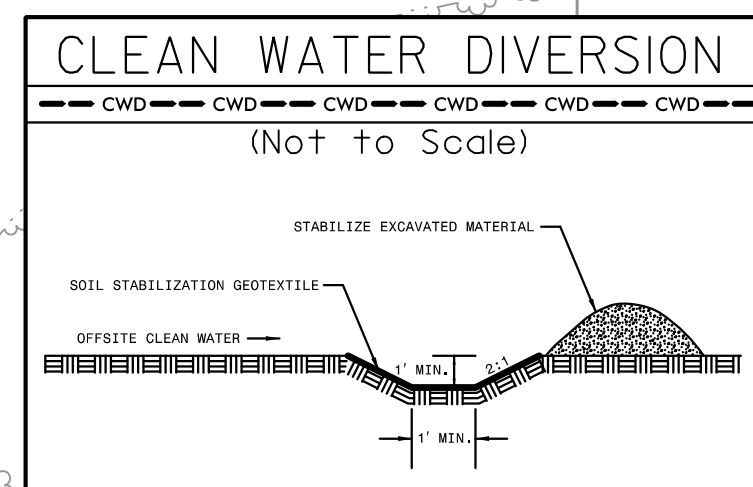


PROJECT REFERENCE NO.	SHEET NO.
U-6202	EC-38/CONST.15
RW SHEET NO.	
ROADWAY DESIGN ENGINEER	HYDRAULICS ENGINEER

UTILIZE COIR FIBER MATTING ADJACENT TO WETLANDS / JURISDICTIONAL AREAS, AND AS DIRECTED BY THE ENGINEER

INSTALL FABRIC INSERT INLET PROTECTION DEVICE IN LIEU OF ROCK INLET SEDIMENT TRAP TYPE 'C' AS DIRECTED BY ENGINEER.



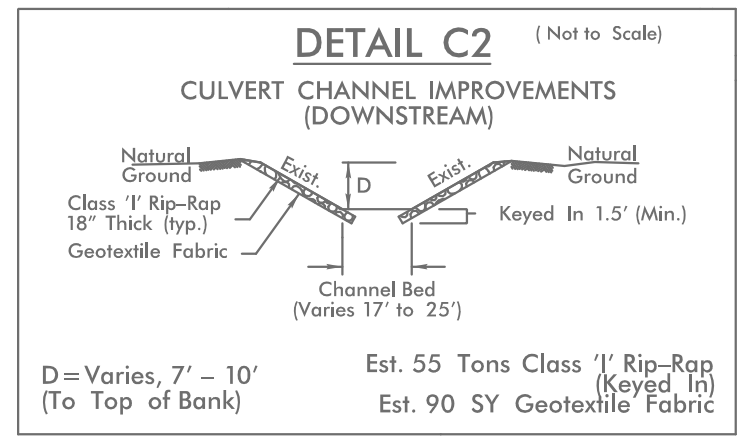
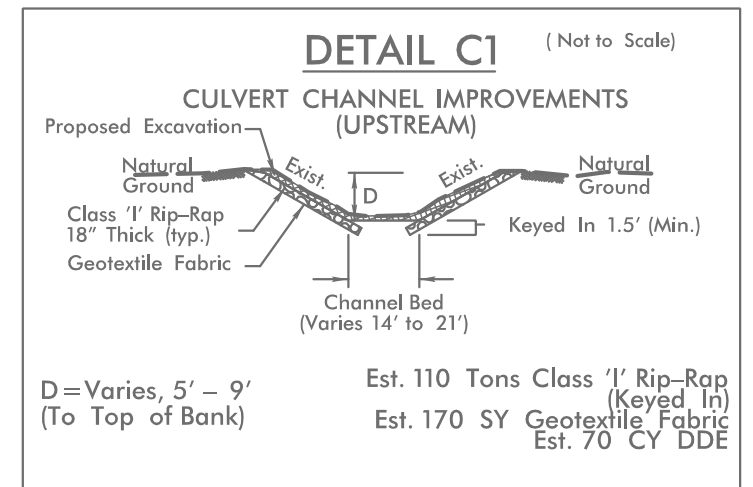
55 x 25 x 3
 4 ft. weir
 (See Infiltration Basin Detail)
 ID 15.2B

NOTE:
 TEMPORARY 15" PIPES FOR CLEAN WATER DIVERSION.

Place Matting for Erosion Control on Slope as Work Allows.
 -L- Sta. 97+50 to Sta. 98+50 LT
 -L- Sta. 98+00 to Sta. 99+00 RT

80 x 39 x 3
 12 ft. weir
 (See Infiltration Basin Detail)
 ID 15.1B

-L-
 PI Sta. 102+47.82
 $\Delta = 2' 27" 41.9" (LT)$
 $D = 0' 28" 38.9"$
 $L = 515.57'$
 $T = 257.82'$
 $R = 12,000.00'$
 $e = NC$



NOTE:
 1. ALL DRIVEWAYS HAVE 10' RADII UNLESS OTHERWISE NOTED.

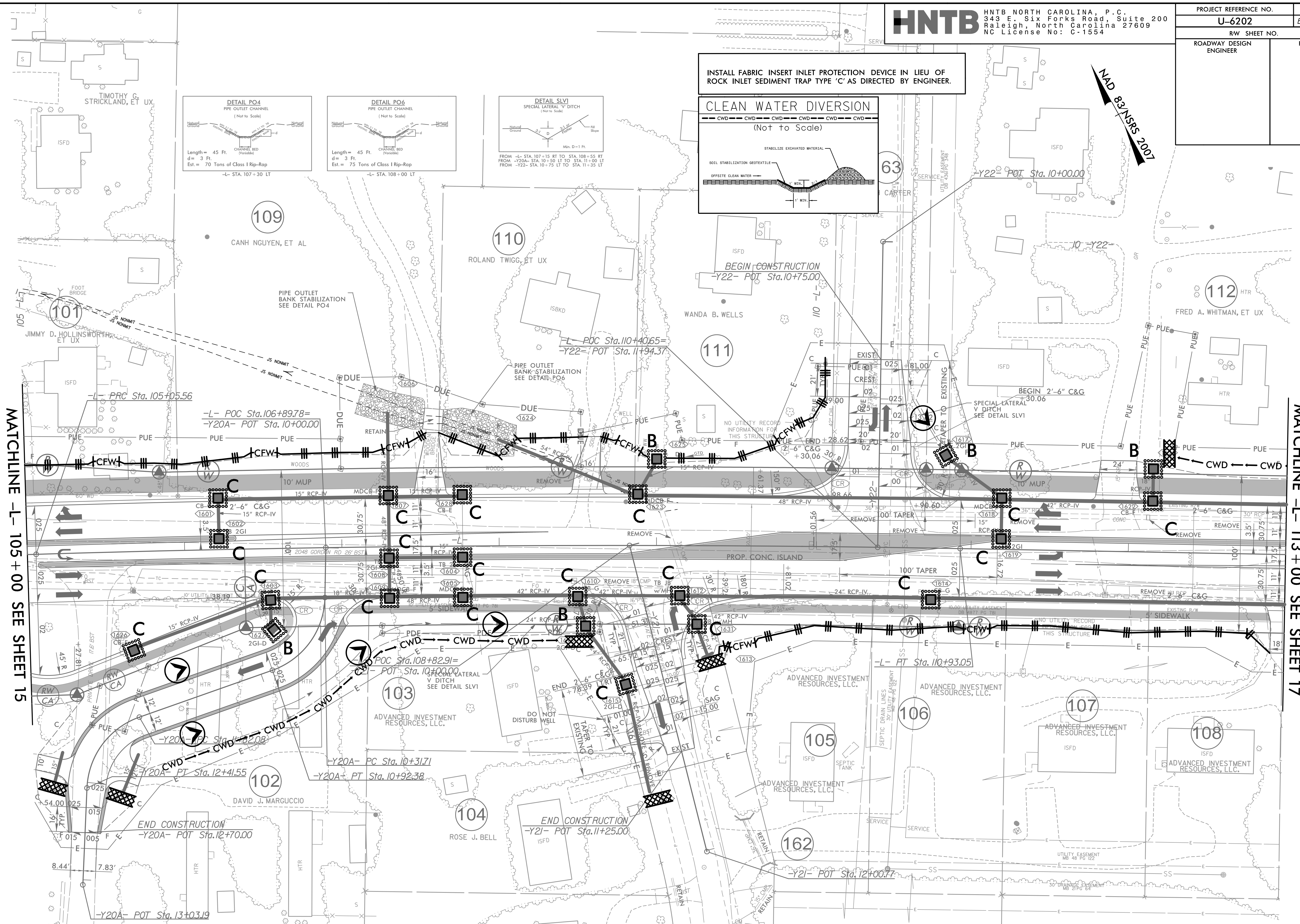
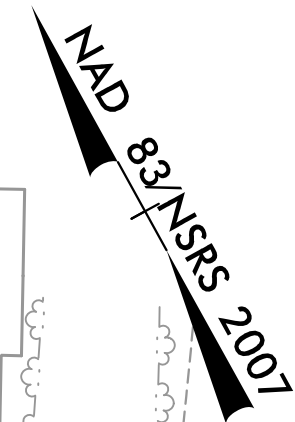
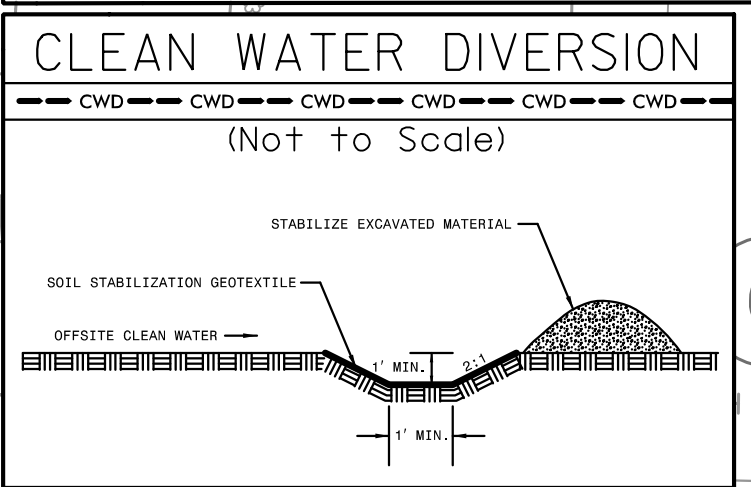
FOR -L- PROFILE, SEE SHEET 29
 FOR -Y19- PROFILE, SEE SHEET 36
 FOR -Y20- PROFILE, SEE SHEET 37
 FOR INTERSECTION DETAIL, SEE SHEET 2B-2

REVISIONS

8.17.99
 5.24.2024
 16202.EC.PSH15.dgn

PROJECT REFERENCE NO.	SHEET NO.
U-6202	EC-39/CONST.16
RW SHEET NO.	
ROADWAY DESIGN ENGINEER	HYDRAULICS ENGINEER

INSTALL FABRIC INSERT INLET PROTECTION DEVICE IN LIEU OF ROCK INLET SEDIMENT TRAP TYPE 'C' AS DIRECTED BY ENGINEER.



MATCHLINE -L- 105 + 00 SEE SHEET 15

MATCHLINE -L- 113 + 00 SEE SHEET 17

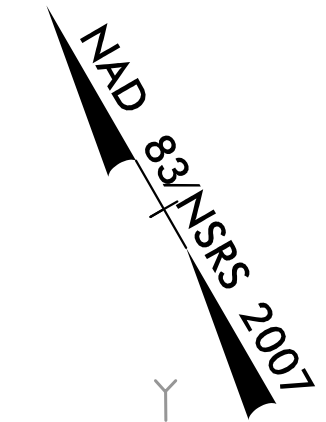
REVISIONS

NOTE:
 1. ALL DRIVEWAYS HAVE 10' RADII UNLESS OTHERWISE NOTED.

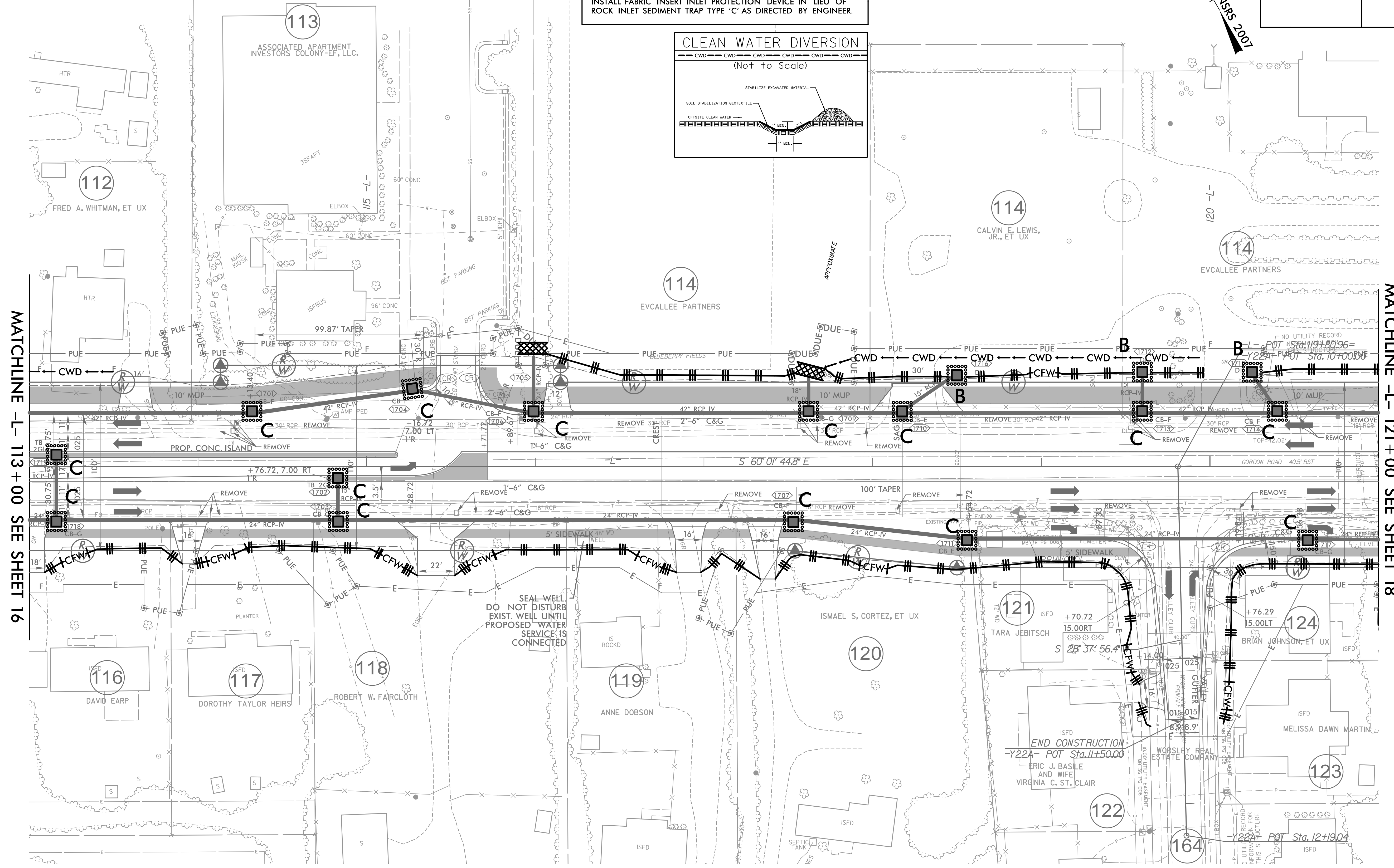
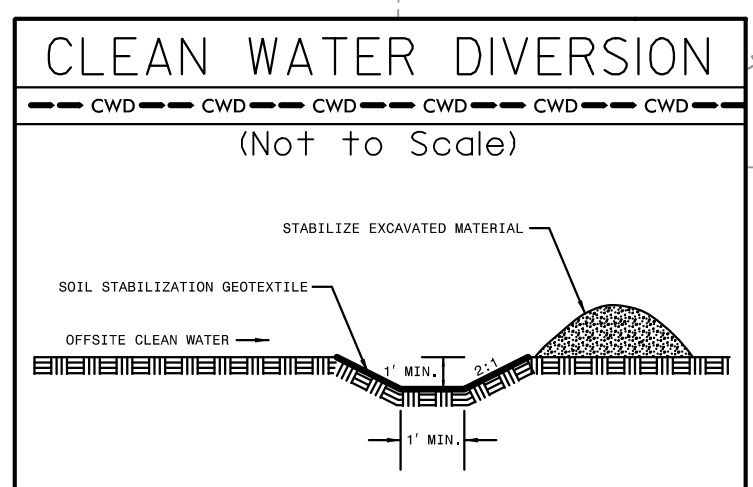
FOR -L- PROFILE, SEE SHEET 29
 FOR -Y20A- PROFILE, SEE SHEET 37
 FOR -Y21- PROFILE, SEE SHEET 37
 FOR -Y22- PROFILE, SEE SHEET 37
 FOR INTERSECTION DETAIL, SEE SHEET 2B-2

4/17/2024 16:2022.EC.PSH16.dgn

PROJECT REFERENCE NO.	SHEET NO.
U-6202	EC-40/CONST.17
RW SHEET NO.	
ROADWAY DESIGN ENGINEER	HYDRAULICS ENGINEER



INSTALL FABRIC INSERT INLET PROTECTION DEVICE IN LIEU OF ROCK INLET SEDIMENT TRAP TYPE 'C' AS DIRECTED BY ENGINEER.



MATCHLINE -L- 113 + 00 SEE SHEET 16

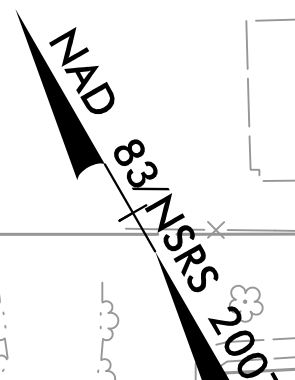
MATCHLINE -L- 121 + 00 SEE SHEET 18

REVISIONS

NOTE:
 1. ALL DRIVEWAYS HAVE 10' RADII UNLESS OTHERWISE NOTED.

FOR -L- PROFILE, SEE SHEET 29
 FOR -Y22A- PROFILE, SEE SHEET 37

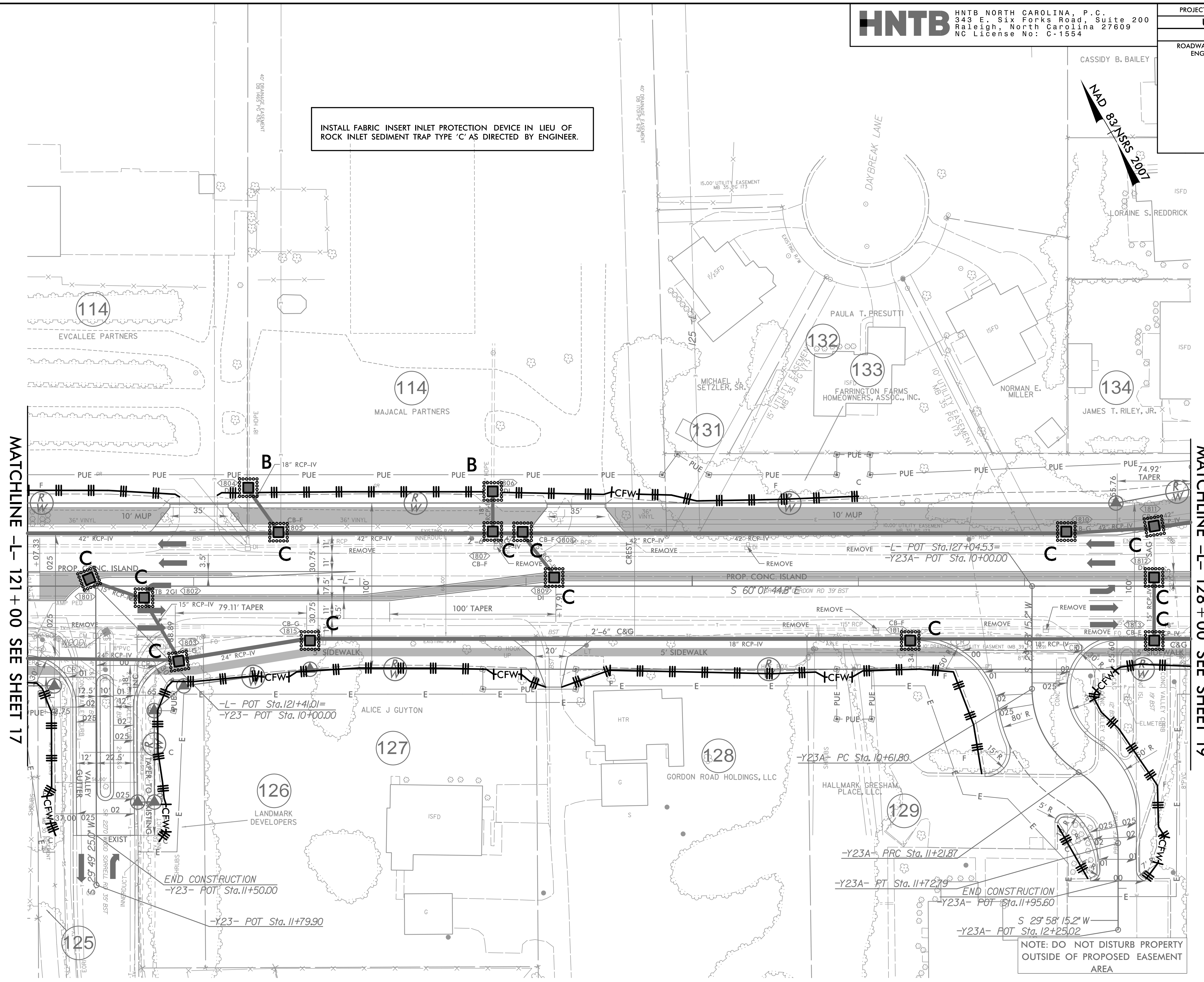
8/17/99
 4/17/2024
 4/17/2024
 4/17/2024
 EC.PSH17.dgn
 HNTB



INSTALL FABRIC INSERT INLET PROTECTION DEVICE IN LIEU OF ROCK INLET SEDIMENT TRAP TYPE 'C' AS DIRECTED BY ENGINEER.

MATCHLINE -L- 121+00 SEE SHEET 17

MATCHLINE -L- 128+00 SEE SHEET 19



NOTE:
1. ALL DRIVEWAYS HAVE 10' RADII UNLESS OTHERWISE NOTED.

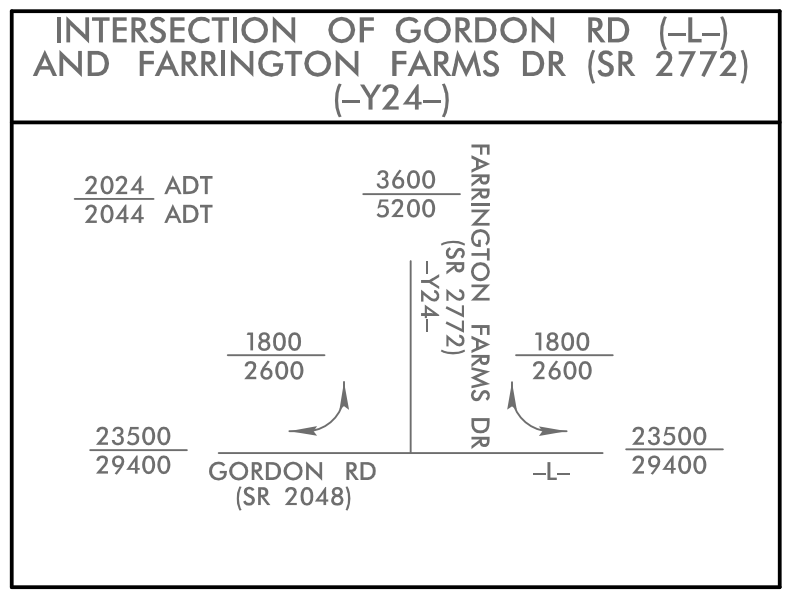
FOR -L- PROFILE, SEE SHEET 30
FOR -Y23- PROFILE, SEE SHEET 37
FOR -Y23A- PROFILE, SEE SHEET 38
FOR INTERSECTION DETAIL, SEE SHEET 2B-3

NOTE: DO NOT DISTURB PROPERTY OUTSIDE OF PROPOSED EASEMENT AREA

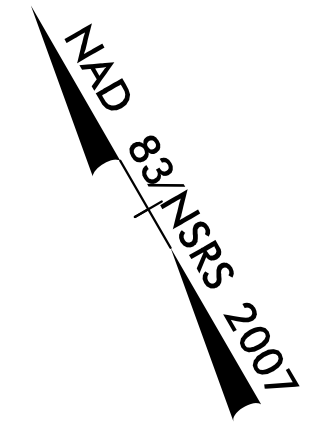
REVISIONS

8/17/99
4/17/2024
4/17/2024

PROJECT REFERENCE NO.	SHEET NO.
U-6202	EC-42/CONST.19
RW SHEET NO.	
ROADWAY DESIGN ENGINEER	HYDRAULICS ENGINEER

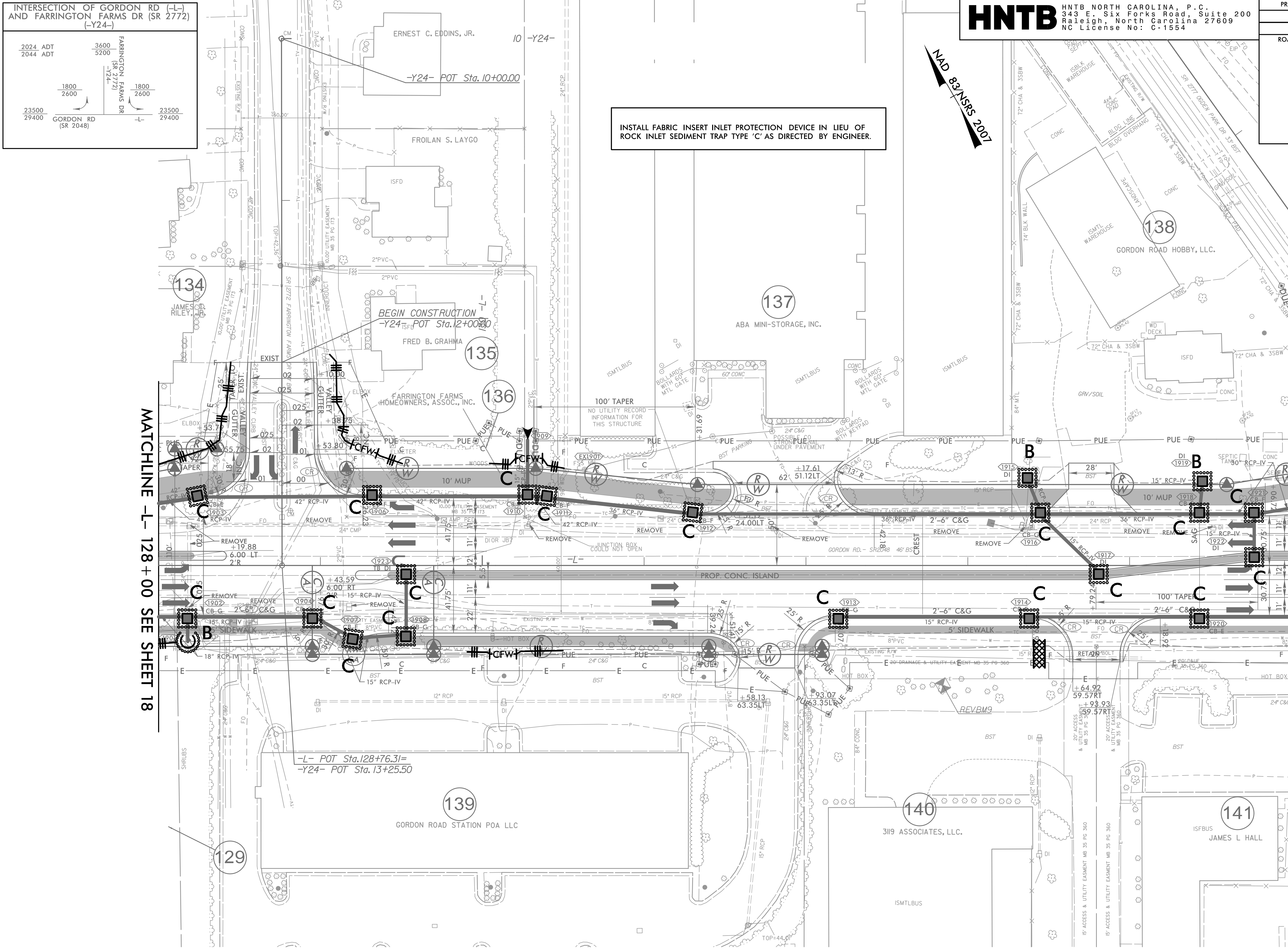


INSTALL FABRIC INSERT INLET PROTECTION DEVICE IN LIEU OF ROCK INLET SEDIMENT TRAP TYPE 'C' AS DIRECTED BY ENGINEER.



MATCHLINE -L- 128+00 SEE SHEET 18

MATCHLINE -L- 135+00 SEE SHEET 20



NOTE:
 1. ALL DRIVEWAYS HAVE 10' RADII UNLESS OTHERWISE NOTED.



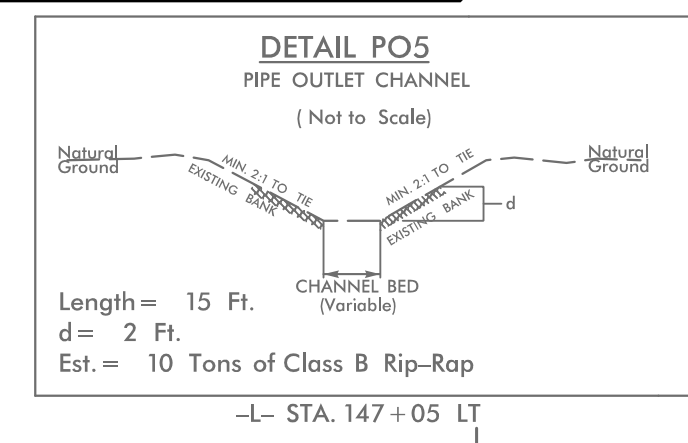
FOR -L- PROFILE, SEE SHEET 30
 FOR -Y24- PROFILE SEE SHEET 38

REVISIONS

4/17/2024
 4/17/2024 EC.PSH19.dgn
 HNTB

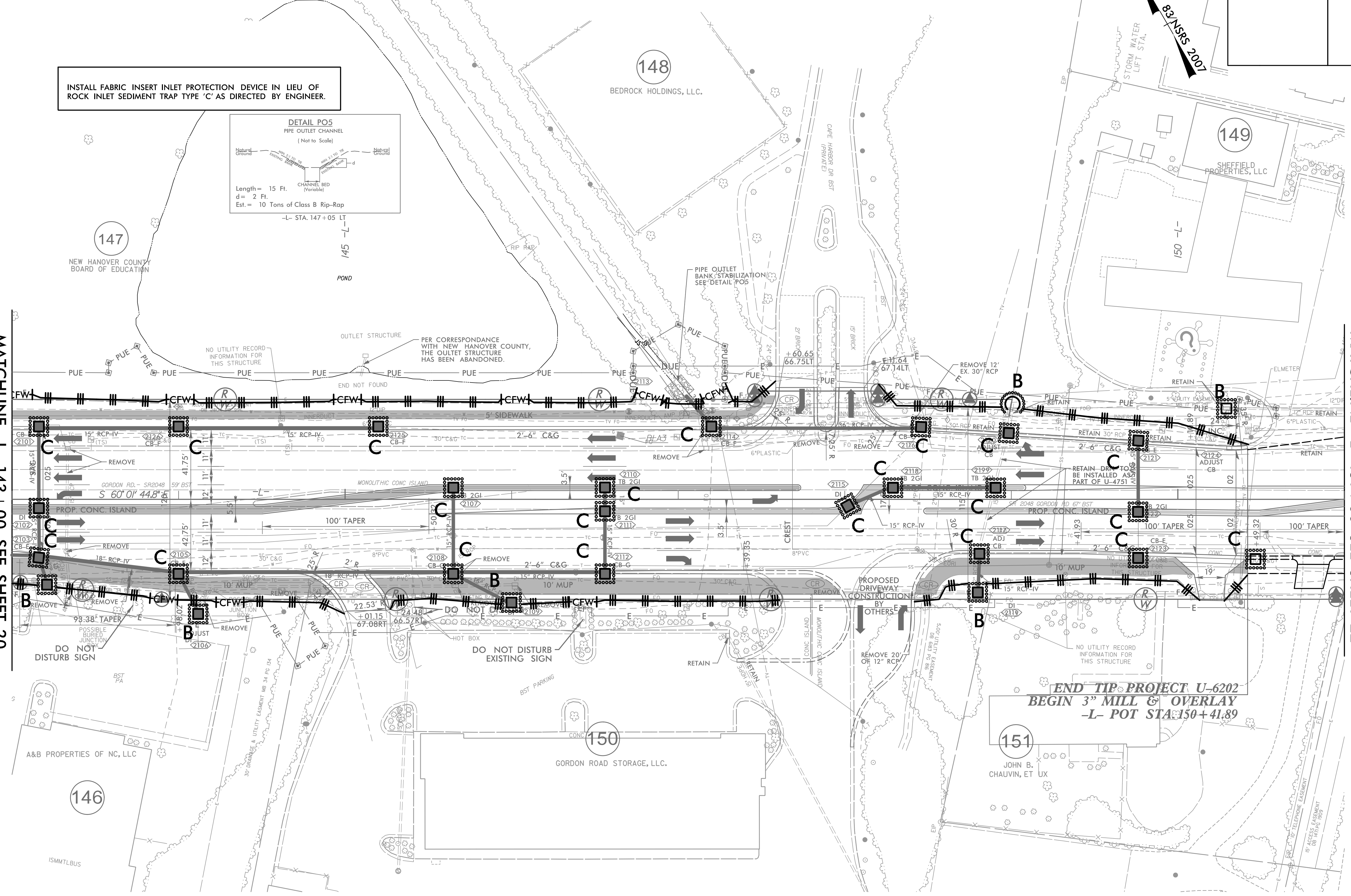
PROJECT REFERENCE NO.	SHEET NO.
U-6202	EC-44/CONST.21
RW SHEET NO.	
ROADWAY DESIGN ENGINEER	HYDRAULICS ENGINEER

INSTALL FABRIC INSERT INLET PROTECTION DEVICE IN LIEU OF ROCK INLET SEDIMENT TRAP TYPE 'C' AS DIRECTED BY ENGINEER.



MATCHLINE -L- 143 + 00 SEE SHEET 20

MATCHLINE -L- 151 + 00 SEE SHEET 22



END TIP PROJECT U-6202
BEGIN 3" MILL & OVERLAY
-L- POT STA. 150+41.89

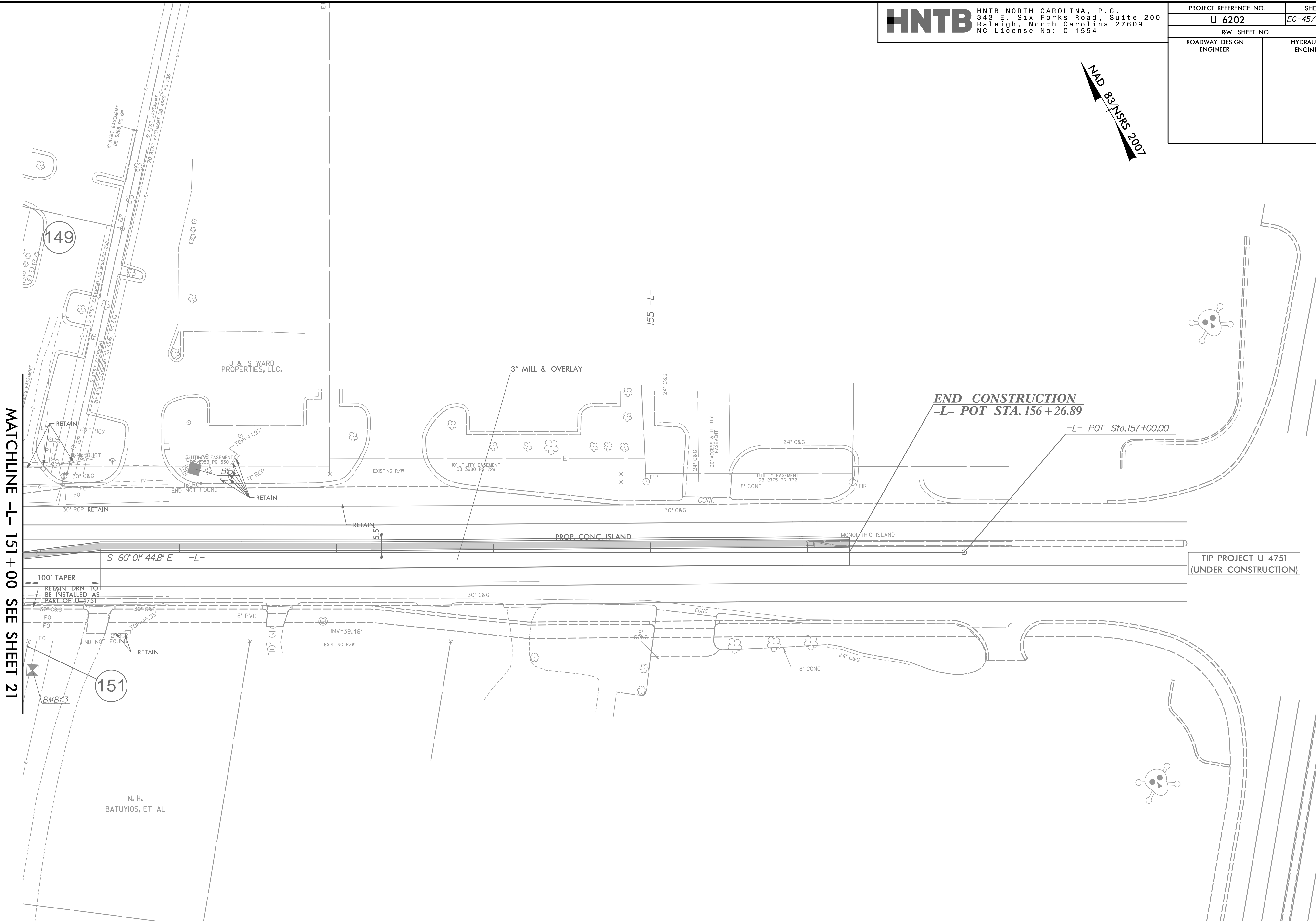
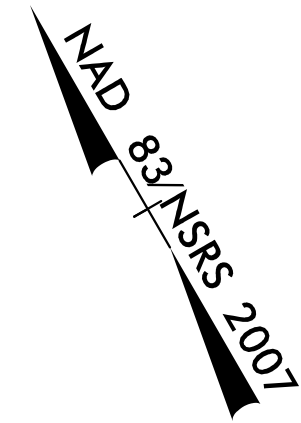
NOTE:
 1. ALL DRIVEWAYS HAVE 10' RADII UNLESS OTHERWISE NOTED.

FOR -L- PROFILE, SEE SHEETS 30 AND 31
 FOR INTERSECTION DETAIL, SEE SHEET 2B-3

8/17/99
 4/17/2024
 4/17/2024
 EC.PSH21.dgn
 HNTB

8/17/99

PROJECT REFERENCE NO.	SHEET NO.
U-6202	EC-45/CONST.22
RW SHEET NO.	
ROADWAY DESIGN ENGINEER	HYDRAULICS ENGINEER



MATCHLINE -L- 151 + 00 SEE SHEET 21

END CONSTRUCTION
 -L- POT STA. 156 + 26.89

-L- POT Sta. 157 + 00.00

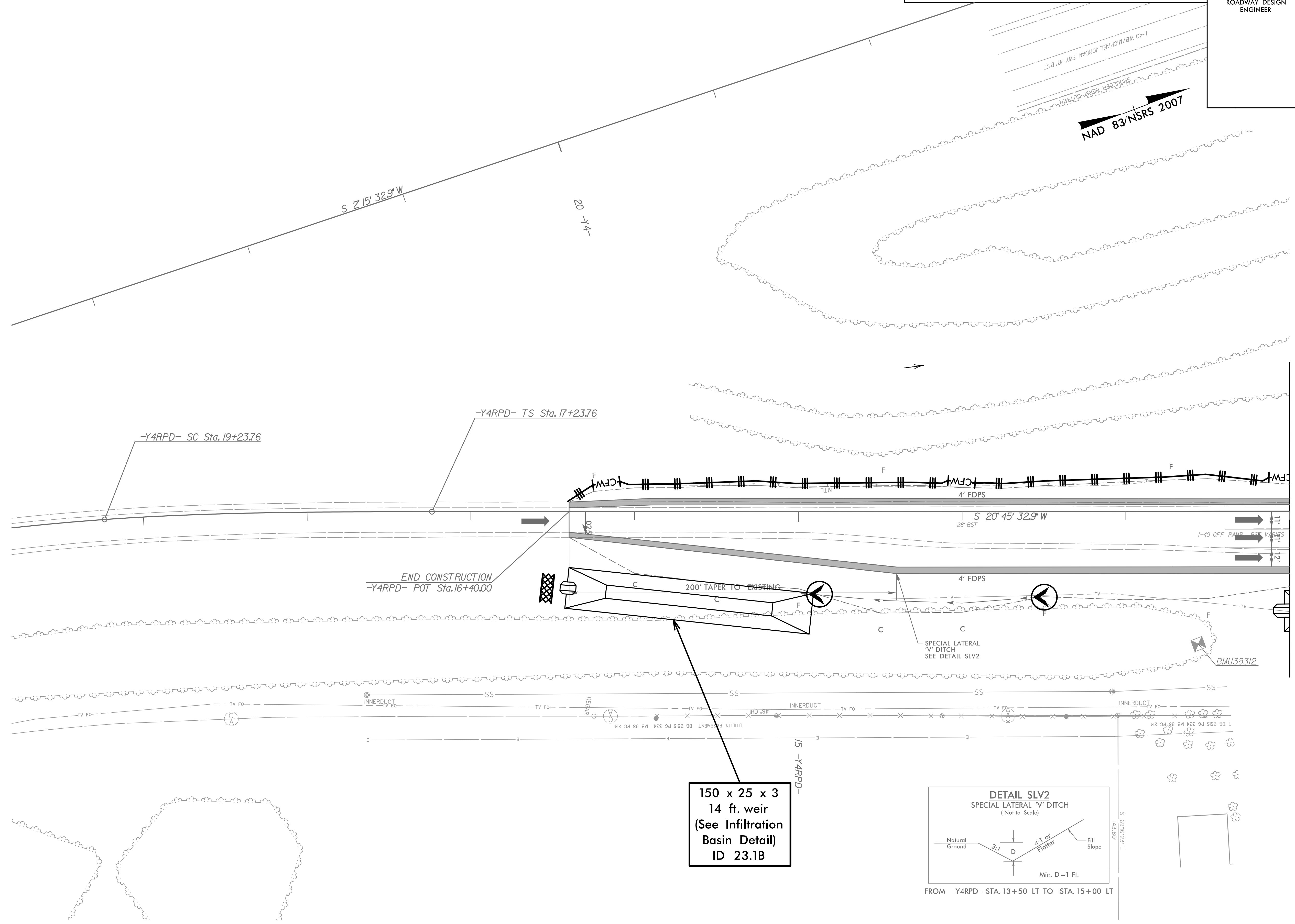
TIP PROJECT U-4751
 (UNDER CONSTRUCTION)

NOTE:
 1. ALL DRIVEWAYS HAVE 10' RADII UNLESS OTHERWISE NOTED.

FOR -L- PROFILE, SEE SHEET 31

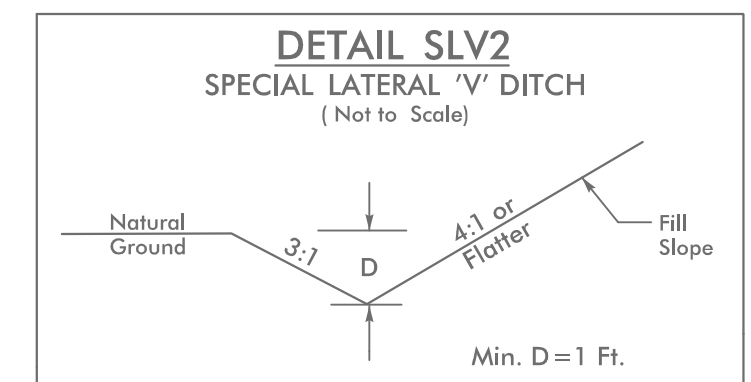
4/17/2024 4:17/2024 EC_PSH22.dgn

NAD 83/NSRS 2007



MATCHLINE -YRPD- 12 + 00 SEE SHEET 6

150 x 25 x 3
 14 ft. weir
 (See Infiltration
 Basin Detail)
 ID 23.1B



FROM -YRPD- STA. 13+50 LT TO STA. 15+00 LT

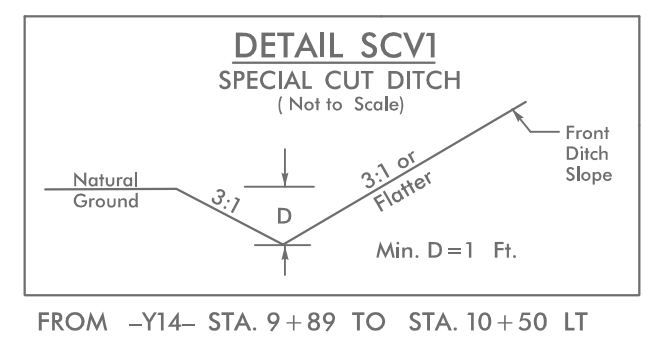
NOTE:
 1. ALL DRIVEWAYS HAVE 10' RADII UNLESS OTHERWISE NOTED.

FOR -YRPD- PROFILE, SEE SHEET 33

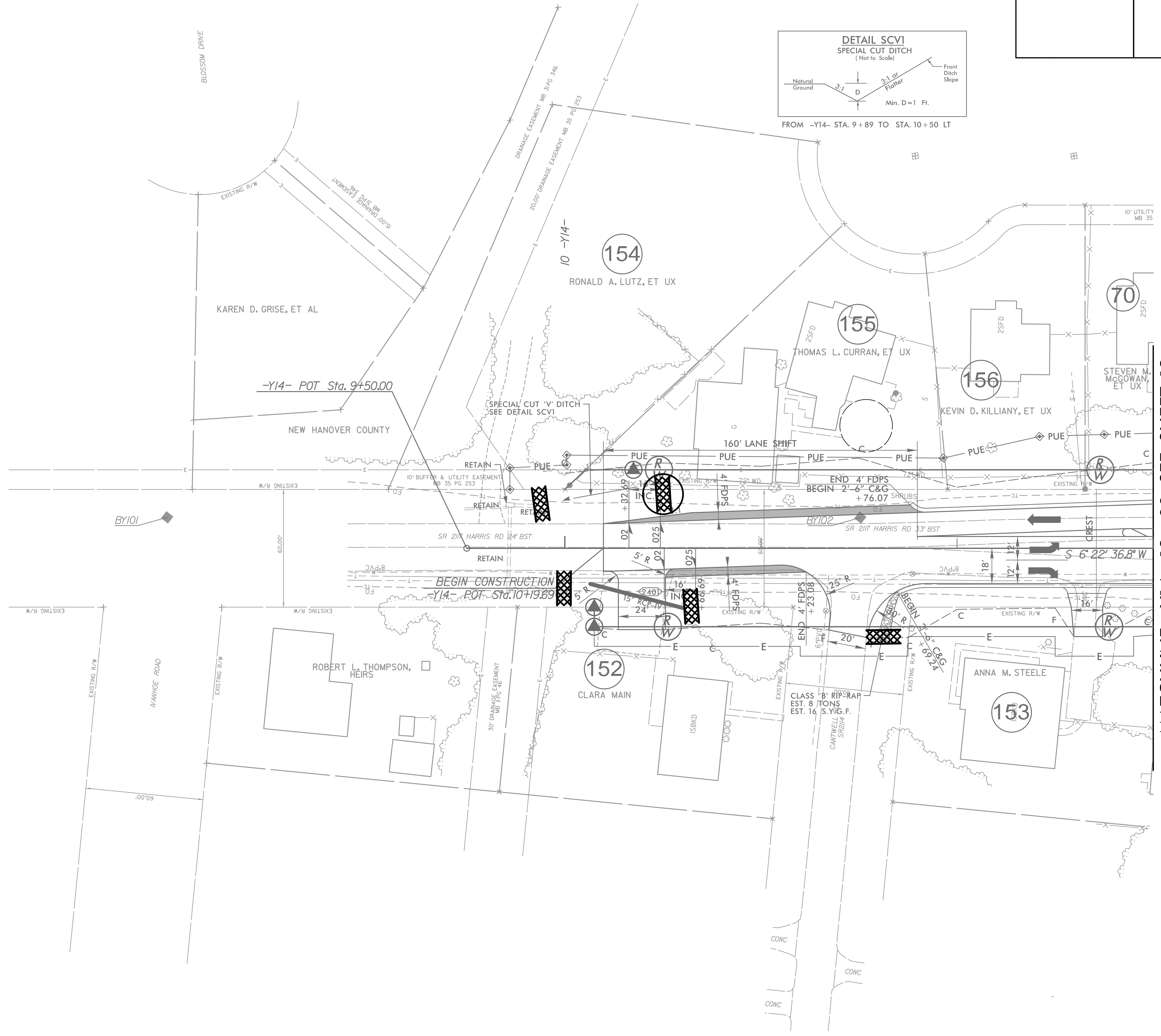
8/17/99

PROJECT REFERENCE NO.	SHEET NO.
U-6202	EC-47/CONST.24
RW SHEET NO.	
ROADWAY DESIGN ENGINEER	HYDRAULICS ENGINEER

NAD 83/NSRS 2007



REVISIONS



MATCHLINE -Y14- 13+00 SEE SHEET 12

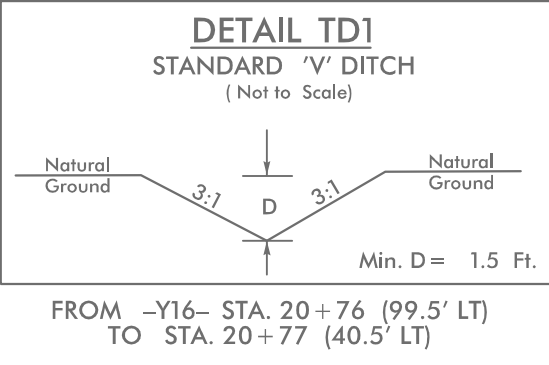
4/17/2024
 HNTB
 4/17/2024 EC_PSH24.dgn

NOTE:
 1. ALL DRIVEWAYS HAVE 10' RADII UNLESS OTHERWISE NOTED.

FOR -Y14- PROFILE, SEE SHEET 35

PROJECT REFERENCE NO.	SHEET NO.
U-6202	EC-48/CONST.25
RW SHEET NO.	
ROADWAY DESIGN ENGINEER	HYDRAULICS ENGINEER

INSTALL FABRIC INSERT INLET PROTECTION DEVICE IN LIEU OF ROCK INLET SEDIMENT TRAP TYPE 'C' AS DIRECTED BY ENGINEER.



REVISIONS

MATCHLINE -Y16- 23+00 SEE SHEET 14

-Y16-	
PI Sta 15+36.90	PI Sta 21+50.97
$\Delta = 59^{\circ} 59' 47.1''$ (LT)	$\Delta = 59^{\circ} 29' 16.2''$ (RT)
D = 6' 09' 39.0"	D = 18' 28' 57.0"
L = 973.84'	L = 321.86'
T = 536.90'	T = 177.14'
R = 930.00'	R = 310.00'
e = EXIST	e = EXIST

NOTE:
 1. ALL DRIVEWAYS HAVE 10' RADII UNLESS OTHERWISE NOTED.

FOR -Y16- PROFILE, SEE SHEET 36

8/17/99

4/17/2024
 6/16/2022.EC_PSH25.dgn
 HNTB