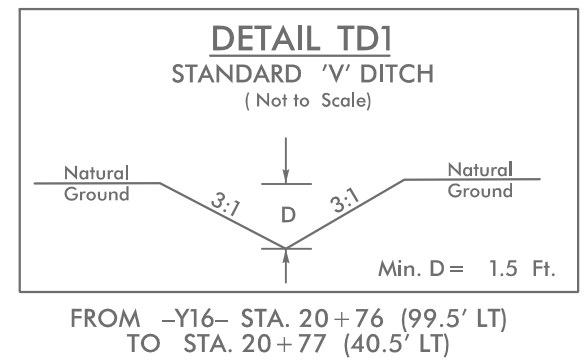
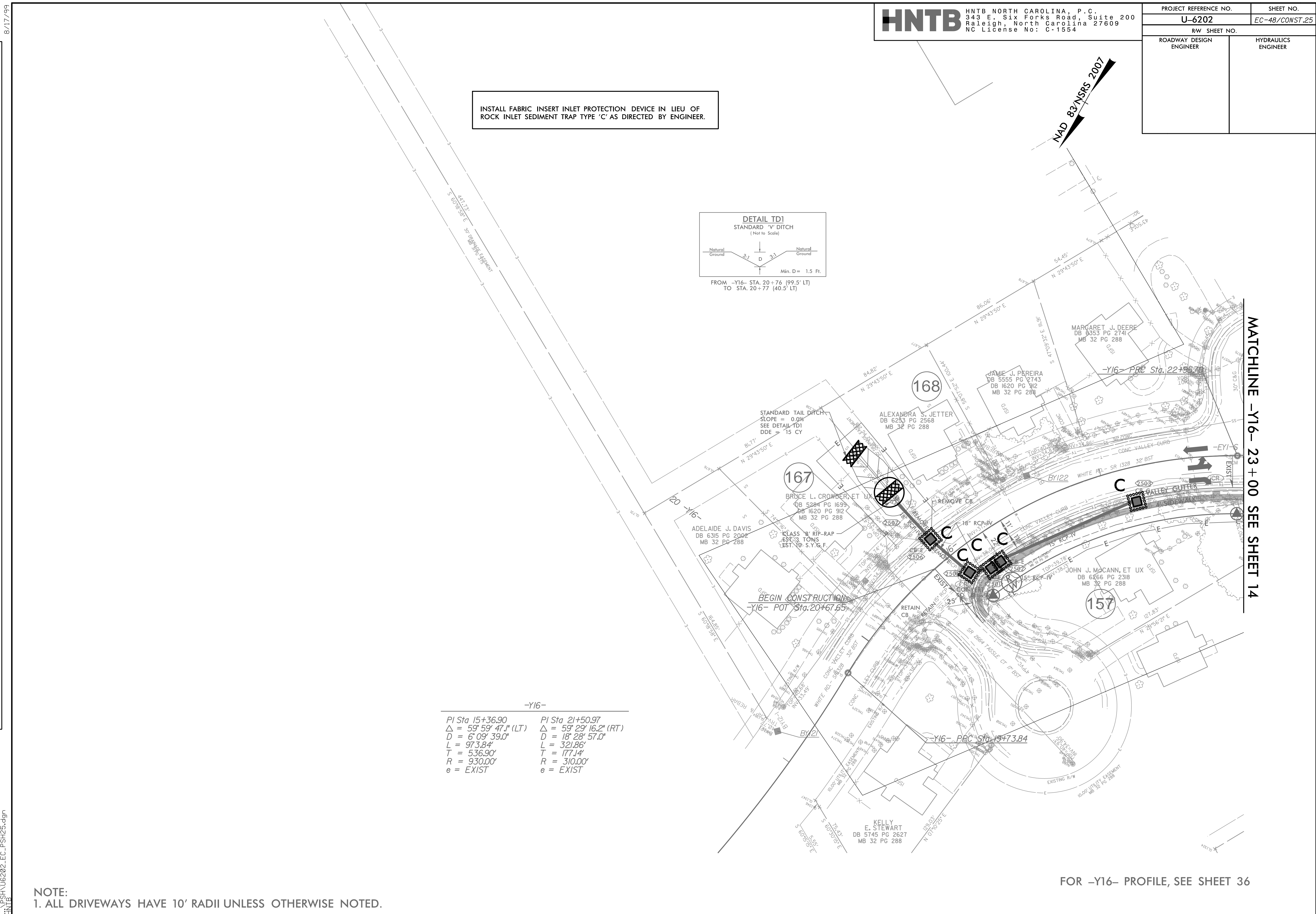


PROJECT REFERENCE NO.	SHEET NO.
U-6202	EC-48/CONST.25
RW SHEET NO.	
ROADWAY DESIGN ENGINEER	HYDRAULICS ENGINEER

INSTALL FABRIC INSERT INLET PROTECTION DEVICE IN LIEU OF ROCK INLET SEDIMENT TRAP TYPE 'C' AS DIRECTED BY ENGINEER.



REVISIONS



-Y16-	
PI Sta 15+36.90	PI Sta 21+50.97
$\Delta = 59^{\circ} 59' 47.1''$ (LT)	$\Delta = 59^{\circ} 29' 16.2''$ (RT)
D = 6' 09' 39.0"	D = 18' 28' 57.0"
L = 973.84'	L = 321.86'
T = 536.90'	T = 177.14'
R = 930.00'	R = 310.00'
e = EXIST	e = EXIST

MATCHLINE -Y16- 23+00 SEE SHEET 14

FOR -Y16- PROFILE, SEE SHEET 36

4/17/2024 4:17/2024 4/17/2024 EC_PSH25.dgn HNTB