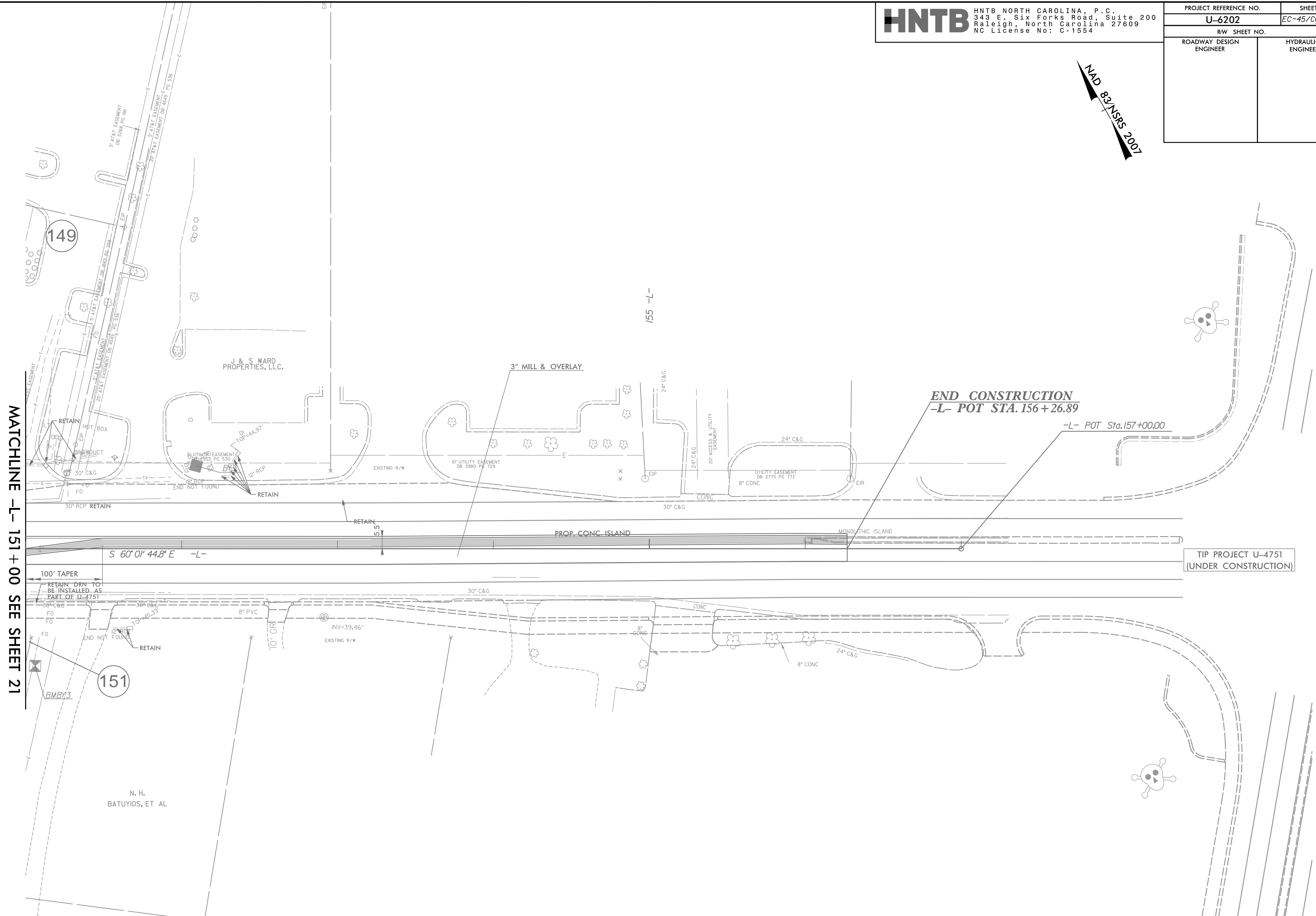
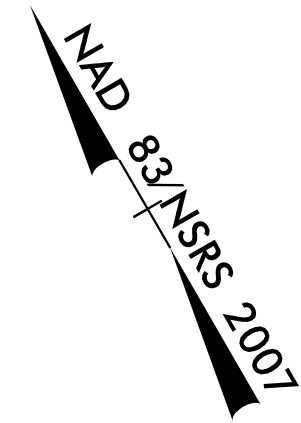


8/17/99

PROJECT REFERENCE NO.	SHEET NO.
U-6202	EC-45/CONST.22
RW SHEET NO.	
ROADWAY DESIGN ENGINEER	HYDRAULICS ENGINEER



MATCHLINE -L- 151 + 00 SEE SHEET 21

END CONSTRUCTION
 -L- POT STA. 156 + 26.89

-L- POT Sta. 157 + 00.00

TIP PROJECT U-4751
 (UNDER CONSTRUCTION)

NOTE:
 1. ALL DRIVEWAYS HAVE 10' RADII UNLESS OTHERWISE NOTED.

FOR -L- PROFILE, SEE SHEET 31

4/17/2024 4:17/2024 EC_PSH22.dgn