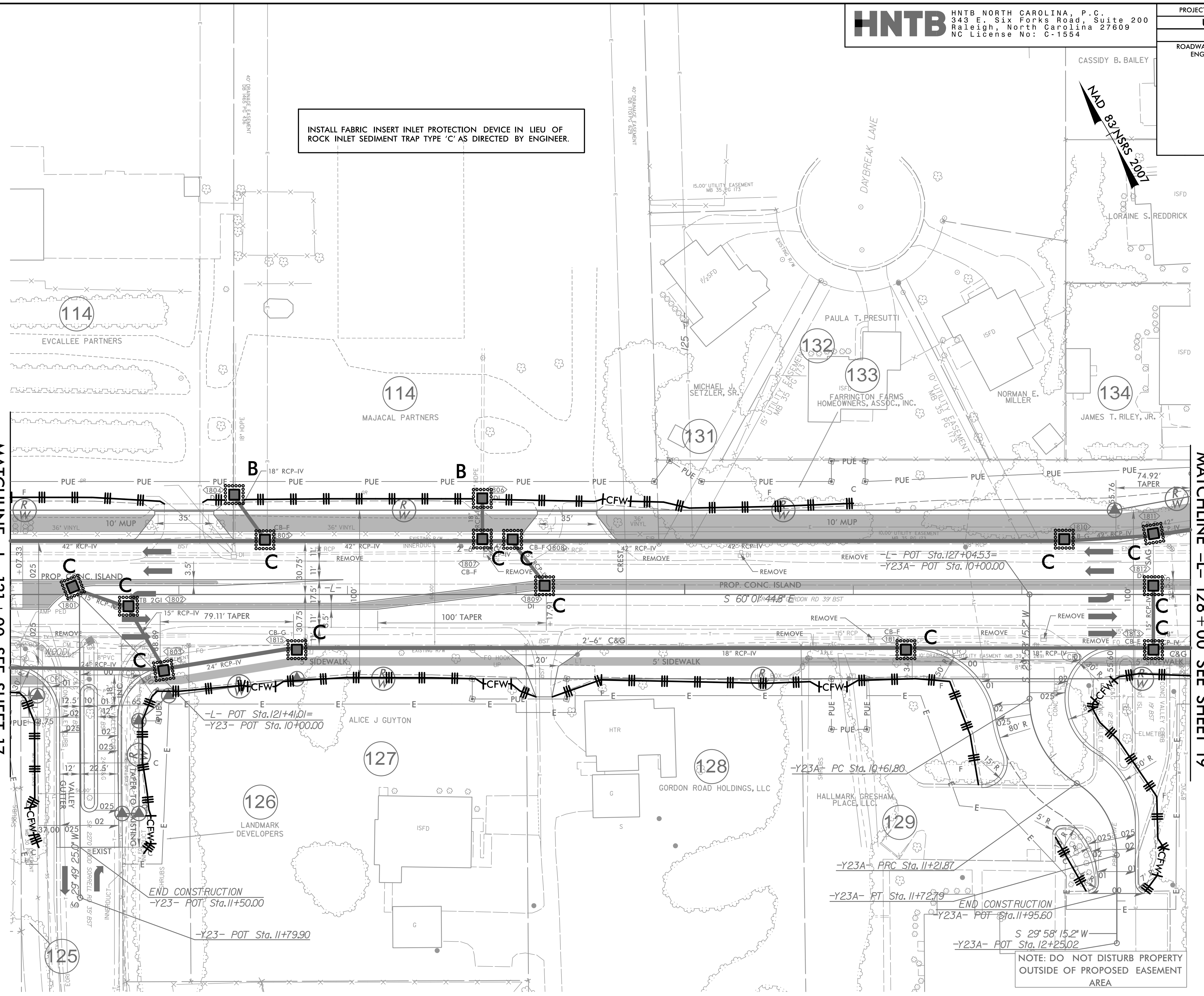
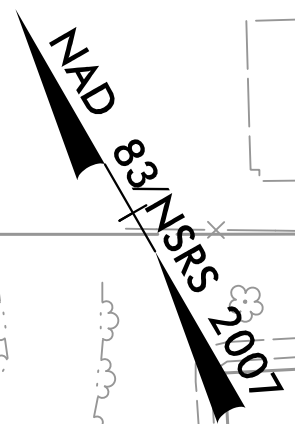


PROJECT REFERENCE NO.	SHEET NO.
U-6202	EC-41/CONST.18
RW SHEET NO.	
ROADWAY DESIGN ENGINEER	HYDRAULICS ENGINEER
CASSIDY B. BAILEY	

INSTALL FABRIC INSERT INLET PROTECTION DEVICE IN LIEU OF ROCK INLET SEDIMENT TRAP TYPE 'C' AS DIRECTED BY ENGINEER.



MATCHLINE -L- 121 + 00 SEE SHEET 17

MATCHLINE -L- 128 + 00 SEE SHEET 19

REVISIONS

NOTE:
 1. ALL DRIVEWAYS HAVE 10' RADII UNLESS OTHERWISE NOTED.

NOTE: DO NOT DISTURB PROPERTY OUTSIDE OF PROPOSED EASEMENT AREA

FOR -L- PROFILE, SEE SHEET 30
 FOR -Y23- PROFILE, SEE SHEET 37
 FOR -Y23A- PROFILE, SEE SHEET 38
 FOR INTERSECTION DETAIL, SEE SHEET 2B-3