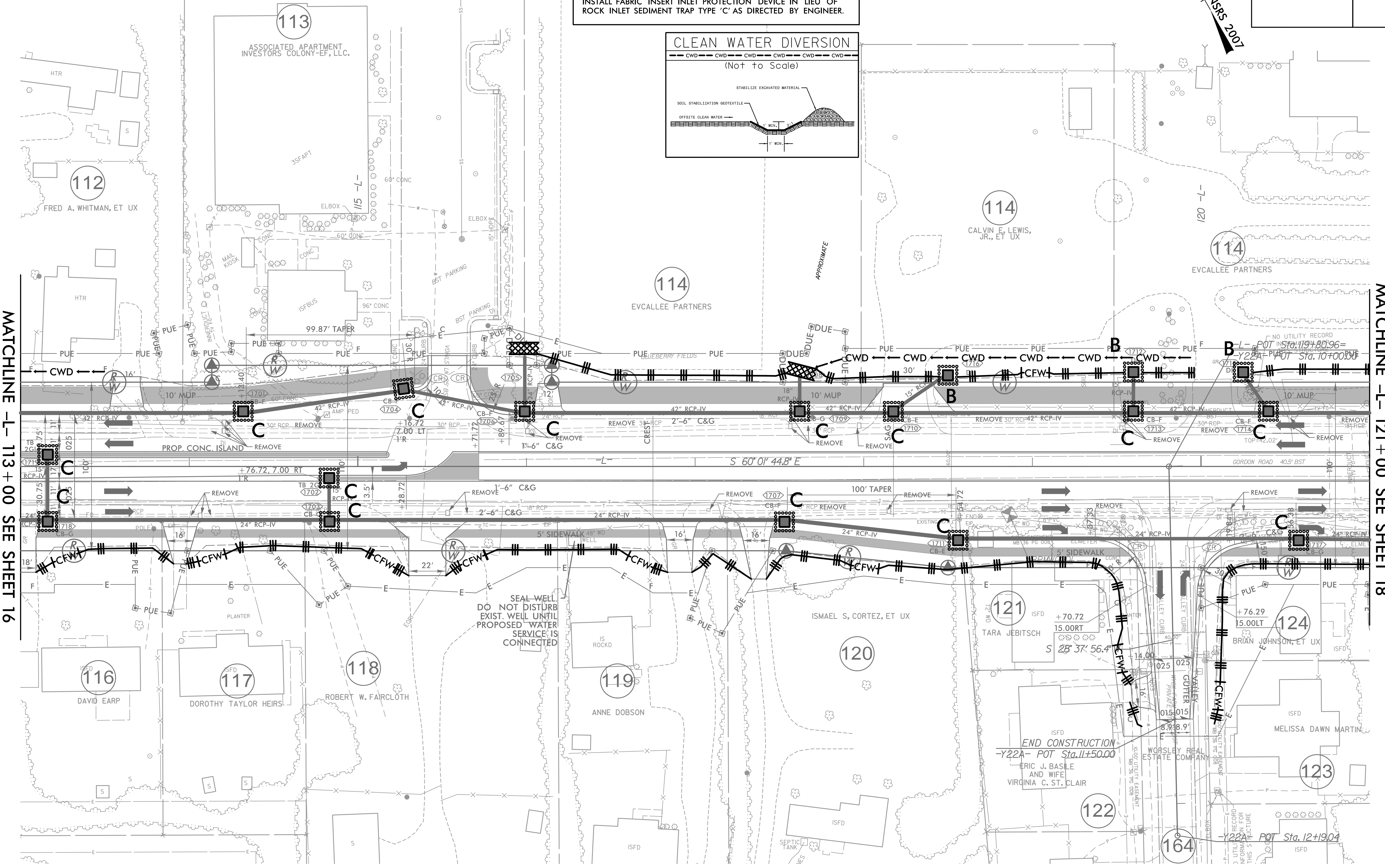
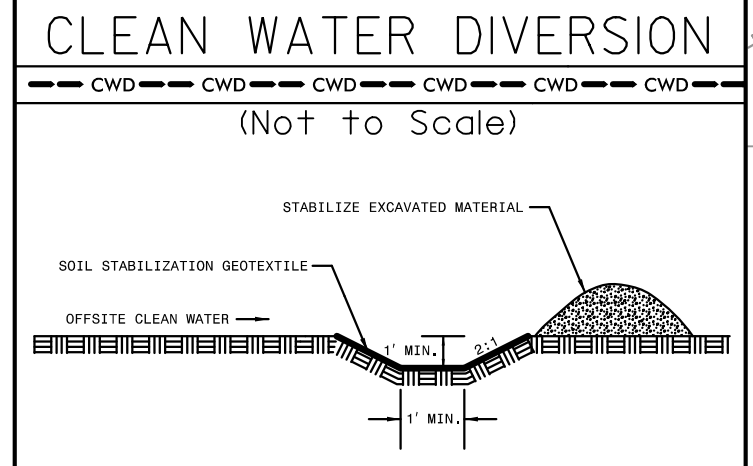


PROJECT REFERENCE NO.	SHEET NO.
U-6202	EC-40/CONST.17
RW SHEET NO.	
ROADWAY DESIGN ENGINEER	HYDRAULICS ENGINEER

NAD 83 NRS 2007

INSTALL FABRIC INSERT INLET PROTECTION DEVICE IN LIEU OF ROCK INLET SEDIMENT TRAP TYPE 'C' AS DIRECTED BY ENGINEER.



MATCHLINE -L- 113+00 SEE SHEET 16

MATCHLINE -L- 121+00 SEE SHEET 18

REVISIONS

NOTE:
 1. ALL DRIVEWAYS HAVE 10' RADII UNLESS OTHERWISE NOTED.

FOR -L- PROFILE, SEE SHEET 29
 FOR -Y22A- PROFILE, SEE SHEET 37

8/17/99
 4/17/2024
 4/17/2024 EC.PSH17.dgn
 HNTB