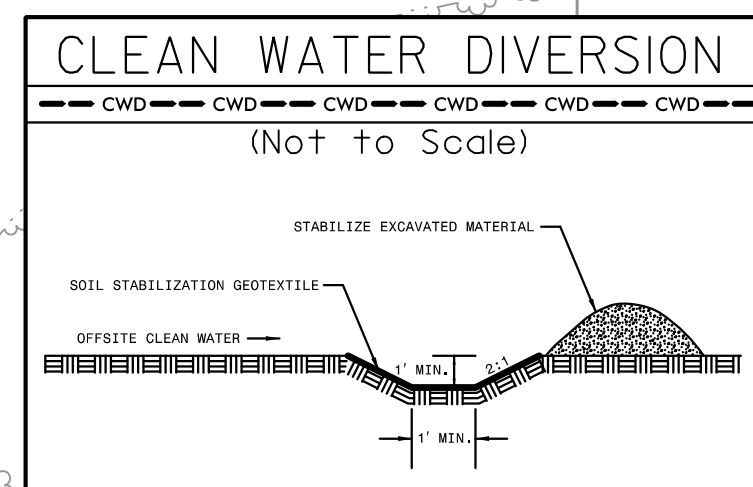


PROJECT REFERENCE NO.	SHEET NO.
U-6202	EC-38/CONST.15
RW SHEET NO.	
ROADWAY DESIGN ENGINEER	HYDRAULICS ENGINEER

UTILIZE COIR FIBER MATTING ADJACENT TO WETLANDS / JURISDICTIONAL AREAS, AND AS DIRECTED BY THE ENGINEER

INSTALL FABRIC INSERT INLET PROTECTION DEVICE IN LIEU OF ROCK INLET SEDIMENT TRAP TYPE 'C' AS DIRECTED BY ENGINEER.



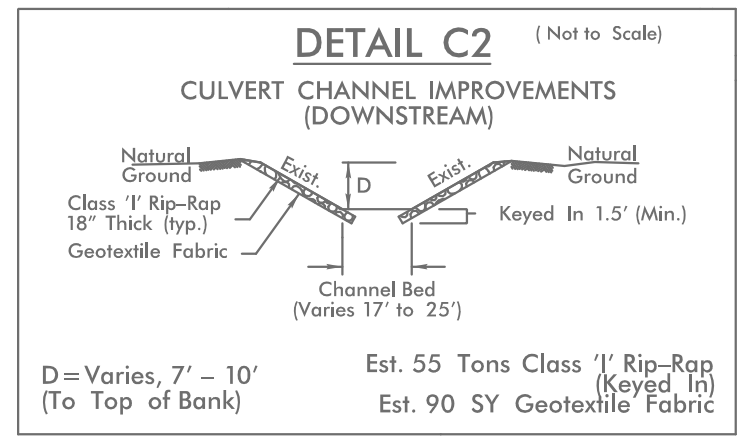
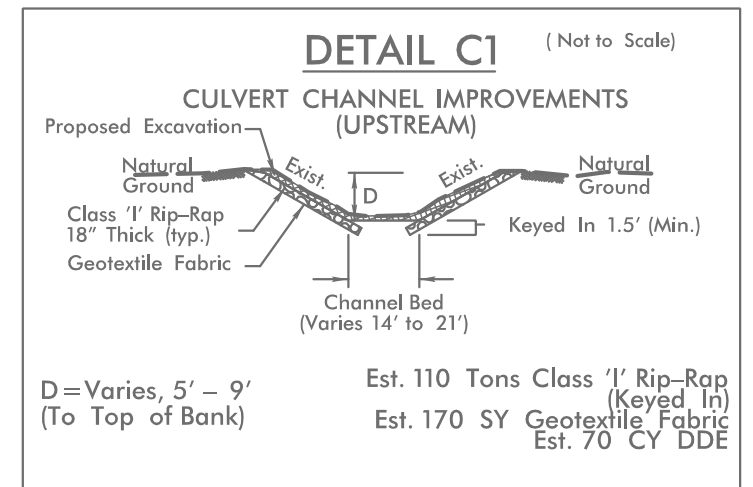
55 x 25 x 3
 4 ft. weir
 (See Infiltration Basin Detail)
 ID 15.2B

NOTE:
 TEMPORARY 15" PIPES FOR CLEAN WATER DIVERSION.

Place Matting for Erosion Control on Slope as Work Allows.
 -L- Sta. 97+50 to Sta. 98+50 LT
 -L- Sta. 98+00 to Sta. 99+00 RT

80 x 39 x 3
 12 ft. weir
 (See Infiltration Basin Detail)
 ID 15.1B

-L-
 PI Sta. 102+47.82
 $\Delta = 2' 27" 41.9" (LT)$
 $D = 0' 28" 38.9"$
 $L = 515.57'$
 $T = 257.82'$
 $R = 12,000.00'$
 $e = NC$



NOTE:
 1. ALL DRIVEWAYS HAVE 10' RADII UNLESS OTHERWISE NOTED.

FOR -L- PROFILE, SEE SHEET 29
 FOR -Y19- PROFILE, SEE SHEET 36
 FOR -Y20- PROFILE, SEE SHEET 37
 FOR INTERSECTION DETAIL, SEE SHEET 2B-2

REVISIONS

8.17.99
 5.24.2024
 16202.EC.PSH15.dgn