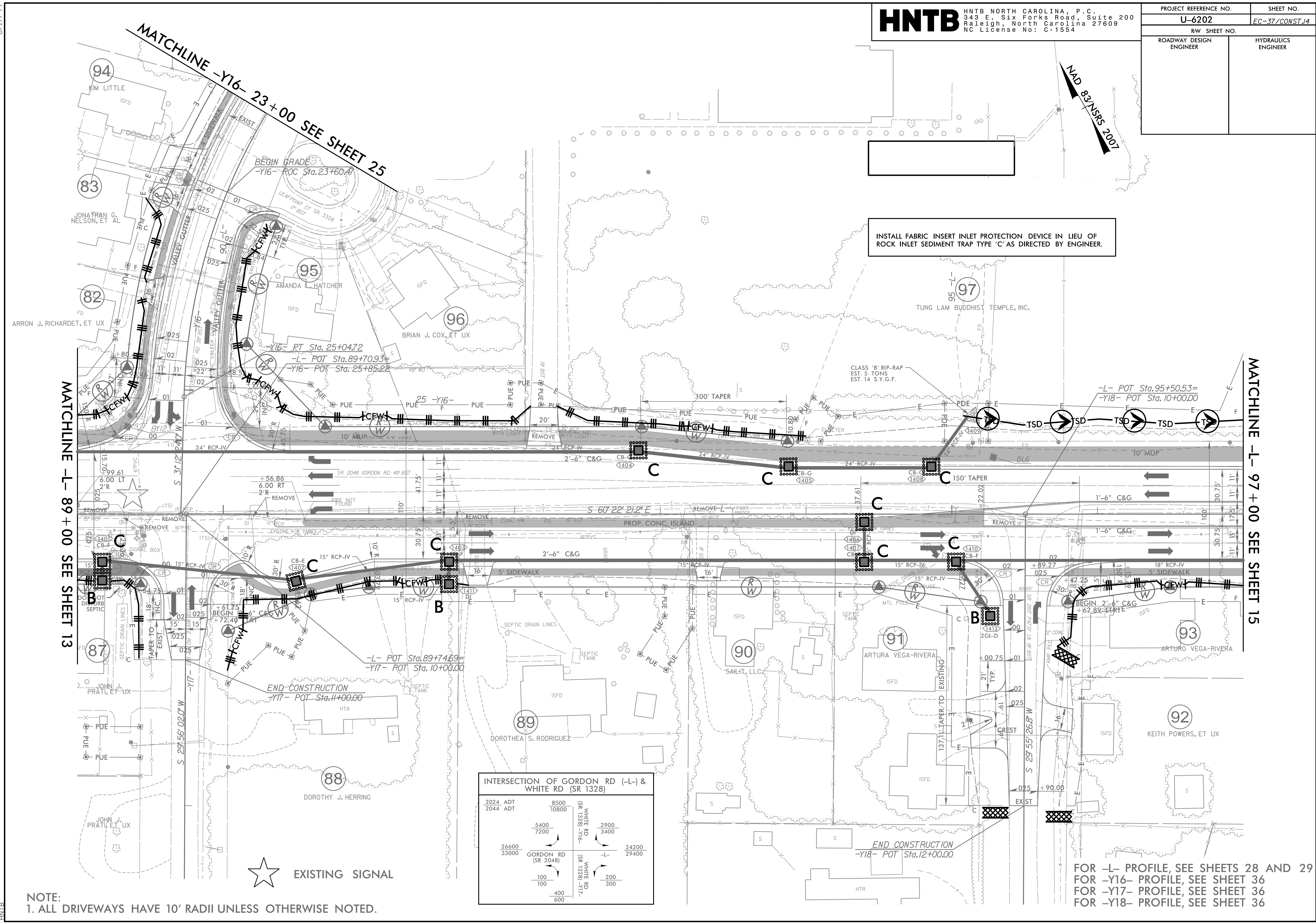
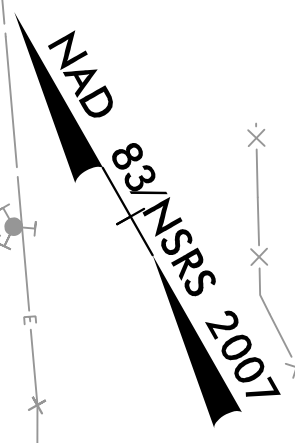


PROJECT REFERENCE NO.	SHEET NO.
U-6202	EC-37/CONST.14
RW SHEET NO.	
ROADWAY DESIGN ENGINEER	HYDRAULICS ENGINEER



INSTALL FABRIC INSERT INLET PROTECTION DEVICE IN LIEU OF ROCK INLET SEDIMENT TRAP TYPE 'C' AS DIRECTED BY ENGINEER.

CLASS 'B' RIP-RAP EST. 5 TONS EST. 14 S.Y.G.F.

INTERSECTION OF GORDON RD (-L-) & WHITE RD (SR 1328)

2024 ADT	8500	WHITE RD (SR 1328) -Y16-	2900
2044 ADT	10800	WHITE RD (SR 1328) -Y17-	3400
		GORDON RD (SR 2048) -L-	24200
26600	33000	GORDON RD (SR 2048) -Y18-	29400
		WHITE RD (SR 1328) -Y17-	200
		WHITE RD (SR 1328) -Y18-	300

MATCHLINE -L- 89 + 00 SEE SHEET 13

MATCHLINE -L- 97 + 00 SEE SHEET 15

MATCHLINE -Y16- 23 + 00 SEE SHEET 25

REVISIONS

NOTE:  
 1. ALL DRIVEWAYS HAVE 10' RADII UNLESS OTHERWISE NOTED.

FOR -L- PROFILE, SEE SHEETS 28 AND 29  
 FOR -Y16- PROFILE, SEE SHEET 36  
 FOR -Y17- PROFILE, SEE SHEET 36  
 FOR -Y18- PROFILE, SEE SHEET 36

8.17.99  
 4/17/2024  
 EC-PSH14.dgn  
 HNTB