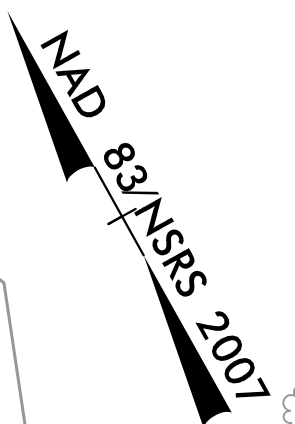
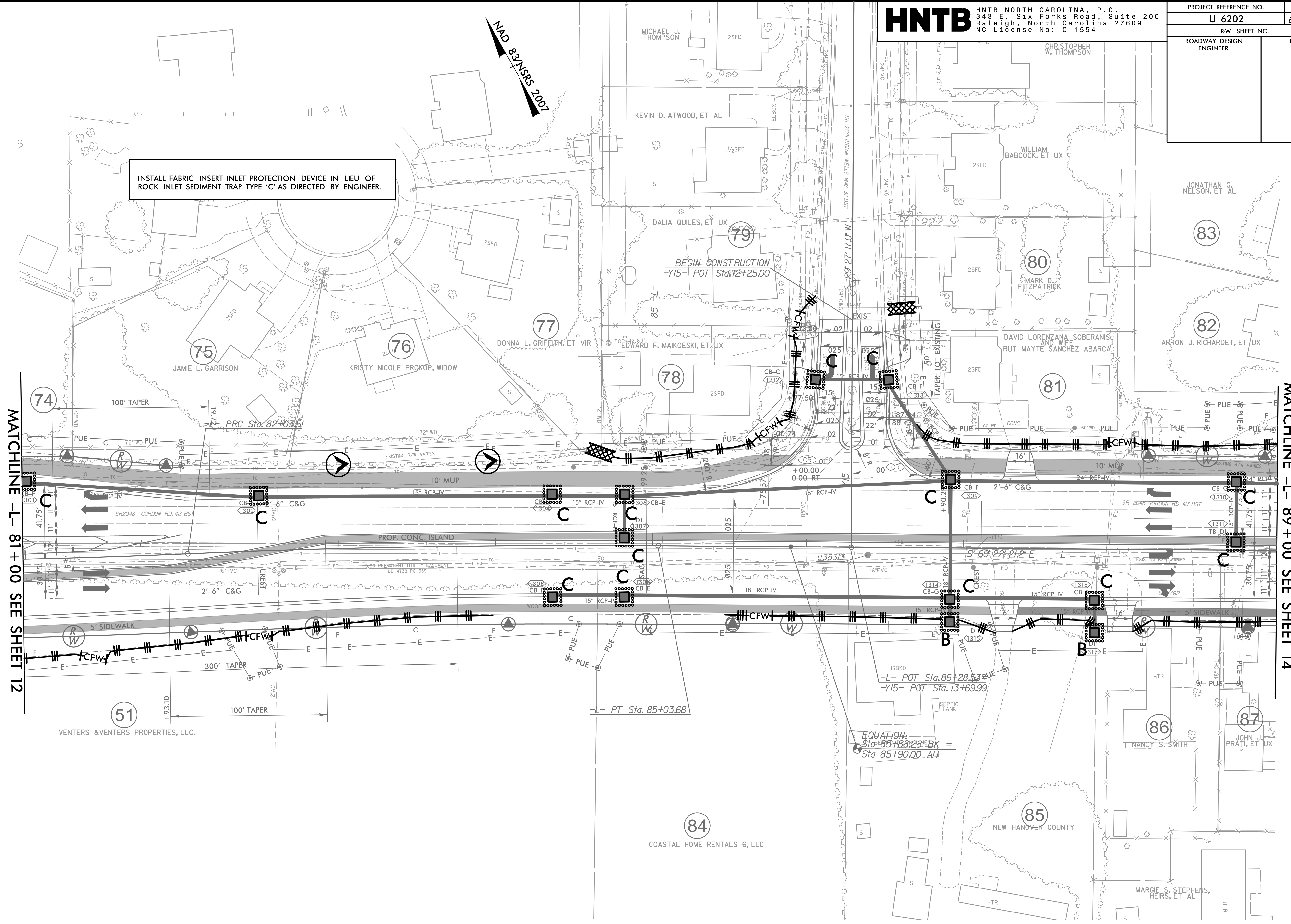


PROJECT REFERENCE NO. U-6202	SHEET NO. <i>EC-36/CONST.13</i>
RW SHEET NO.	
ROADWAY DESIGN ENGINEER	HYDRAULICS ENGINEER

8/17/99



INSTALL FABRIC INSERT INLET PROTECTION DEVICE IN LIEU OF ROCK INLET SEDIMENT TRAP TYPE 'C' AS DIRECTED BY ENGINEER.



MATCHLINE -L- 81+00 SEE SHEET 12

MATCHLINE -L- 89+00 SEE SHEET 14

REVISIONS

4/17/2024
 HNTB
 4/17/2024 16:20:22.EC_PSH13.dgn

NOTE:
 1. ALL DRIVEWAYS HAVE 10' RADII UNLESS OTHERWISE NOTED.

FOR -L- PROFILE, SEE SHEET 28
 FOR -Y15- PROFILE, SEE SHEET 35