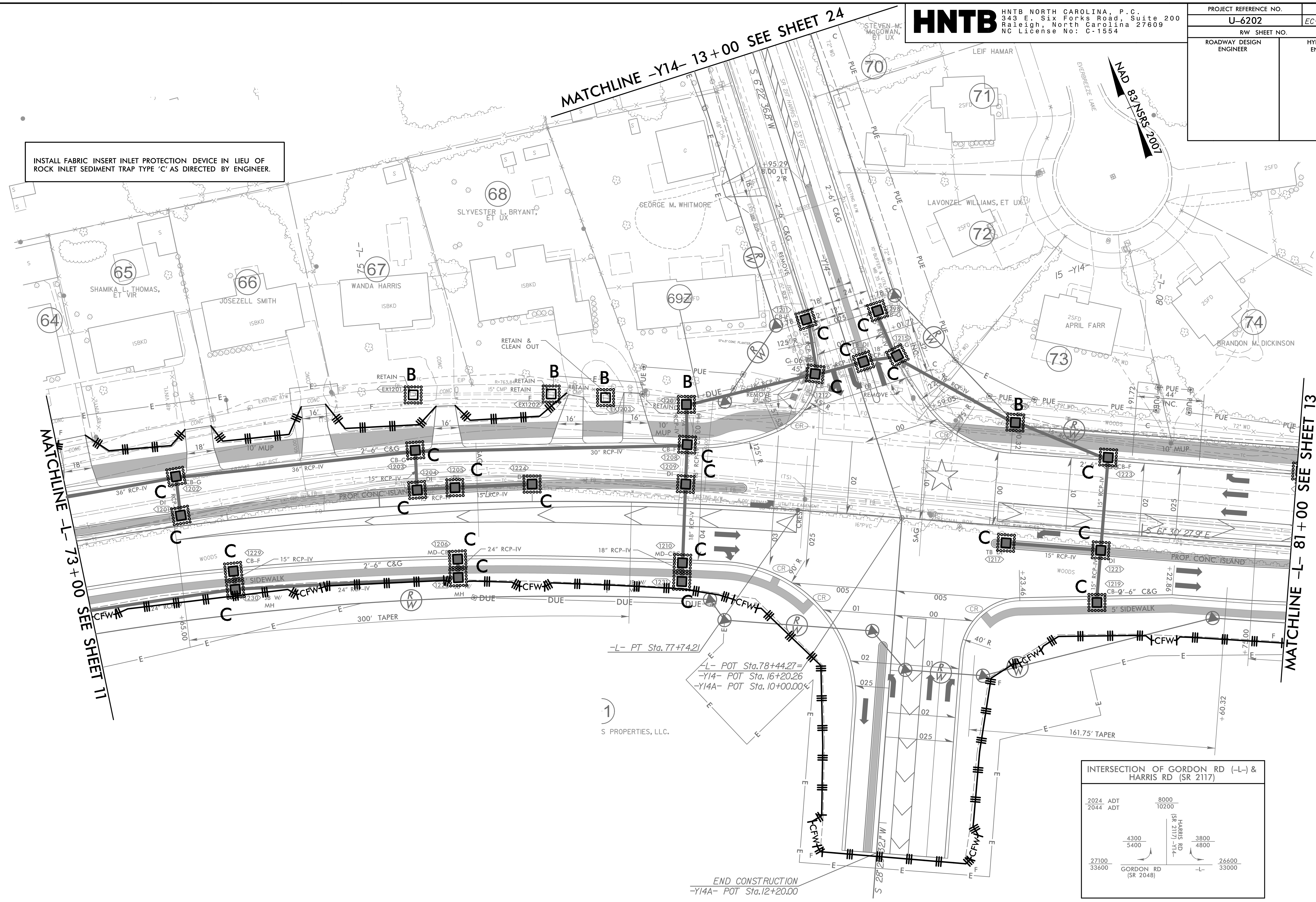


PROJECT REFERENCE NO.	SHEET NO.
U-6202	EC-35/CONST.12
RW SHEET NO.	
ROADWAY DESIGN ENGINEER	HYDRAULICS ENGINEER

**MATCHLINE -Y14- 13+00 SEE SHEET 24**

INSTALL FABRIC INSERT INLET PROTECTION DEVICE IN LIEU OF ROCK INLET SEDIMENT TRAP TYPE 'C' AS DIRECTED BY ENGINEER.

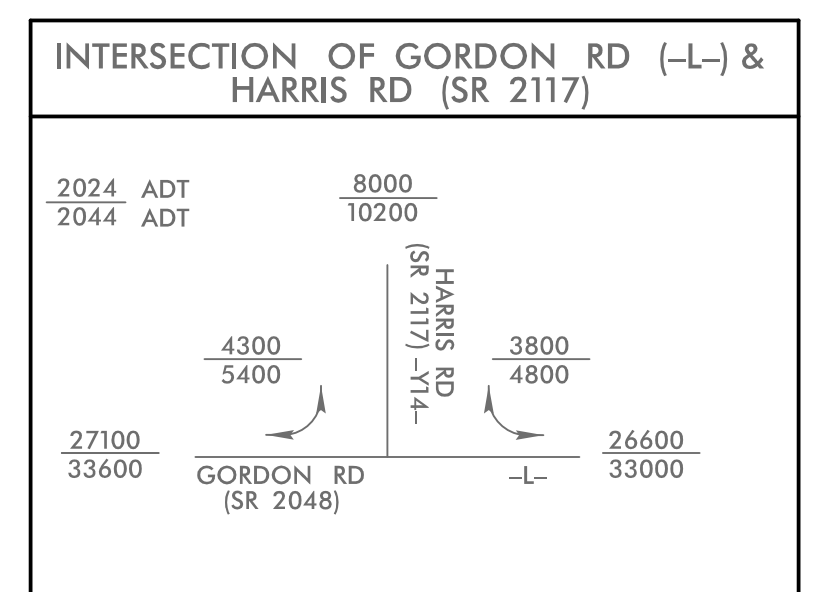


REVISIONS

4/17/2024  
 4/17/2024  
 HNTB

NOTE:  
 1. ALL DRIVEWAYS HAVE 10' RADII UNLESS OTHERWISE NOTED.

★ EXISTING SIGNAL



FOR -L- PROFILE, SEE SHEET 28  
 FOR -Y14- PROFILE, SEE SHEET 35  
 FOR -Y14A- PROFILE, SEE SHEET 38  
 FOR INTERSECTION DETAIL, SEE SHEET 28-2