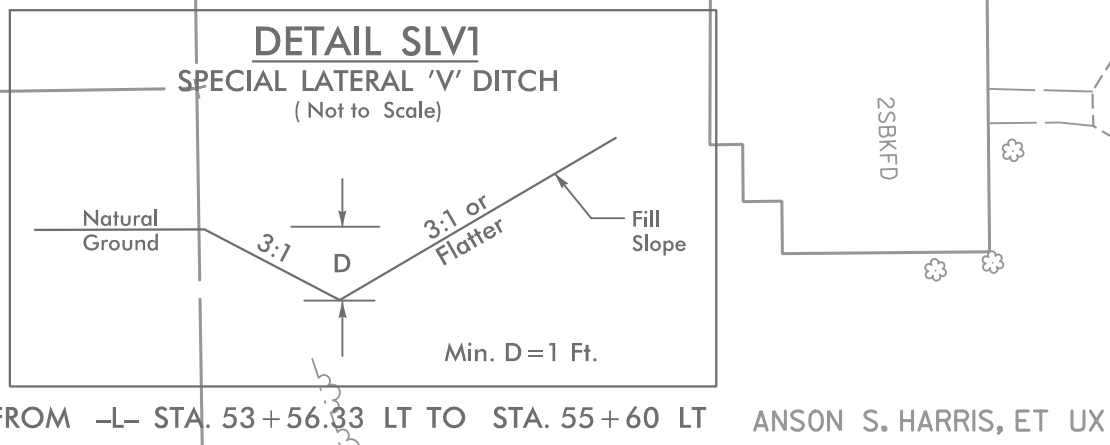
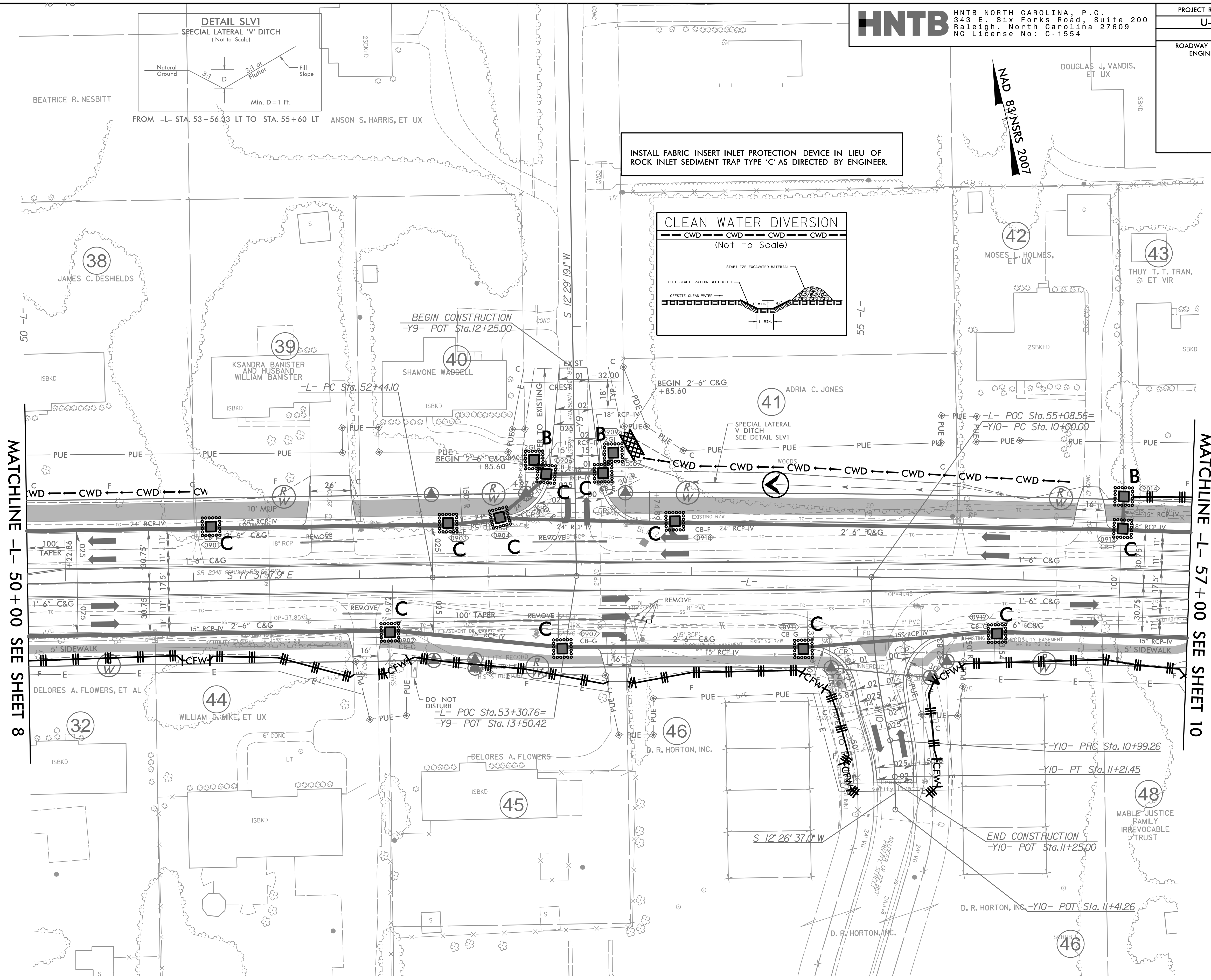
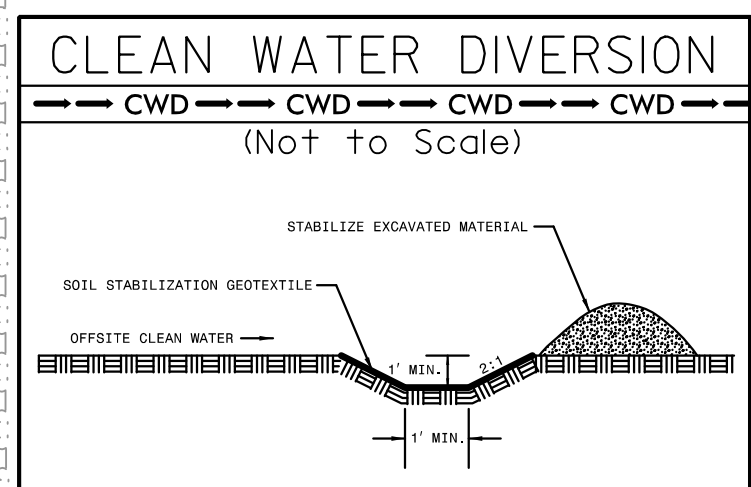


PROJECT REFERENCE NO.	SHEET NO.
U-6202	EC-32/CONST.9
RW SHEET NO.	
ROADWAY DESIGN ENGINEER	HYDRAULICS ENGINEER

NAD 83/NSRS 2007



INSTALL FABRIC INSERT INLET PROTECTION DEVICE IN LIEU OF ROCK INLET SEDIMENT TRAP TYPE 'C' AS DIRECTED BY ENGINEER.



REVISIONS

NOTE:
 1. ALL DRIVEWAYS HAVE 10' RADII UNLESS OTHERWISE NOTED.

FOR -L- PROFILE, SEE SHEET 27
 FOR -Y9- PROFILE, SEE SHEET 34
 FOR -Y10- PROFILE, SEE SHEET 34
 FOR INTERSECTION DETAIL SEE SHEET 2B-2

8/17/99
 4/17/2024
 HNTB