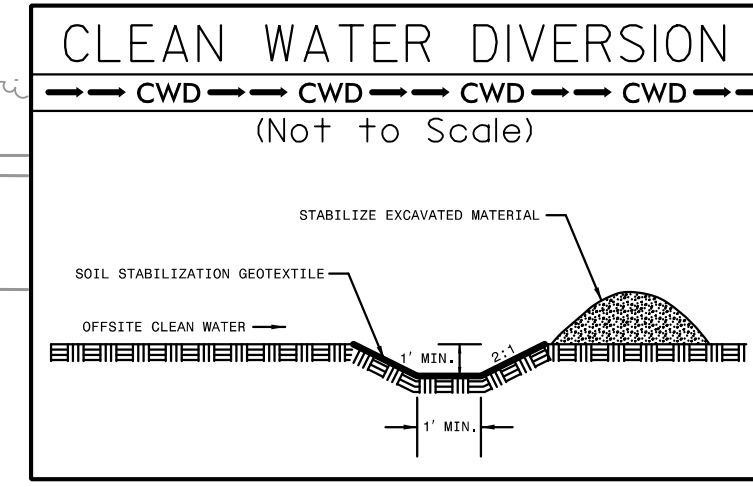
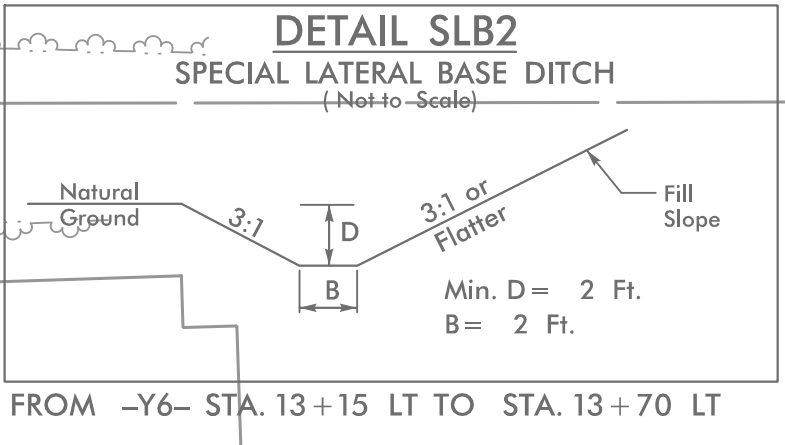
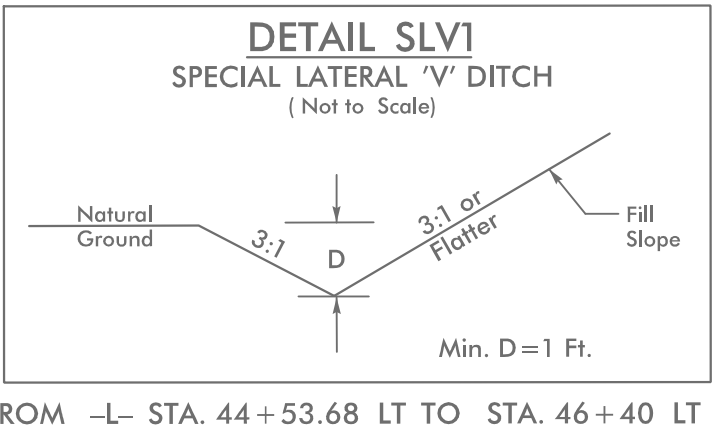
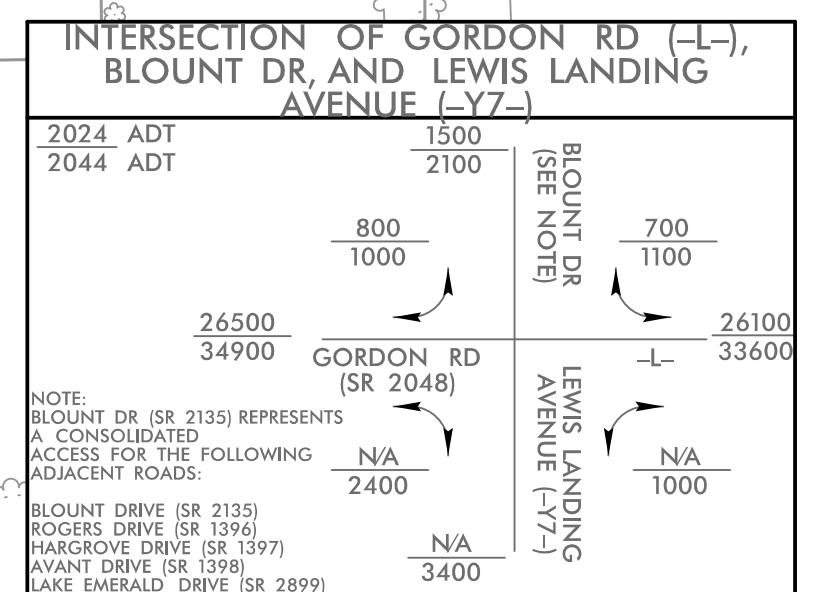
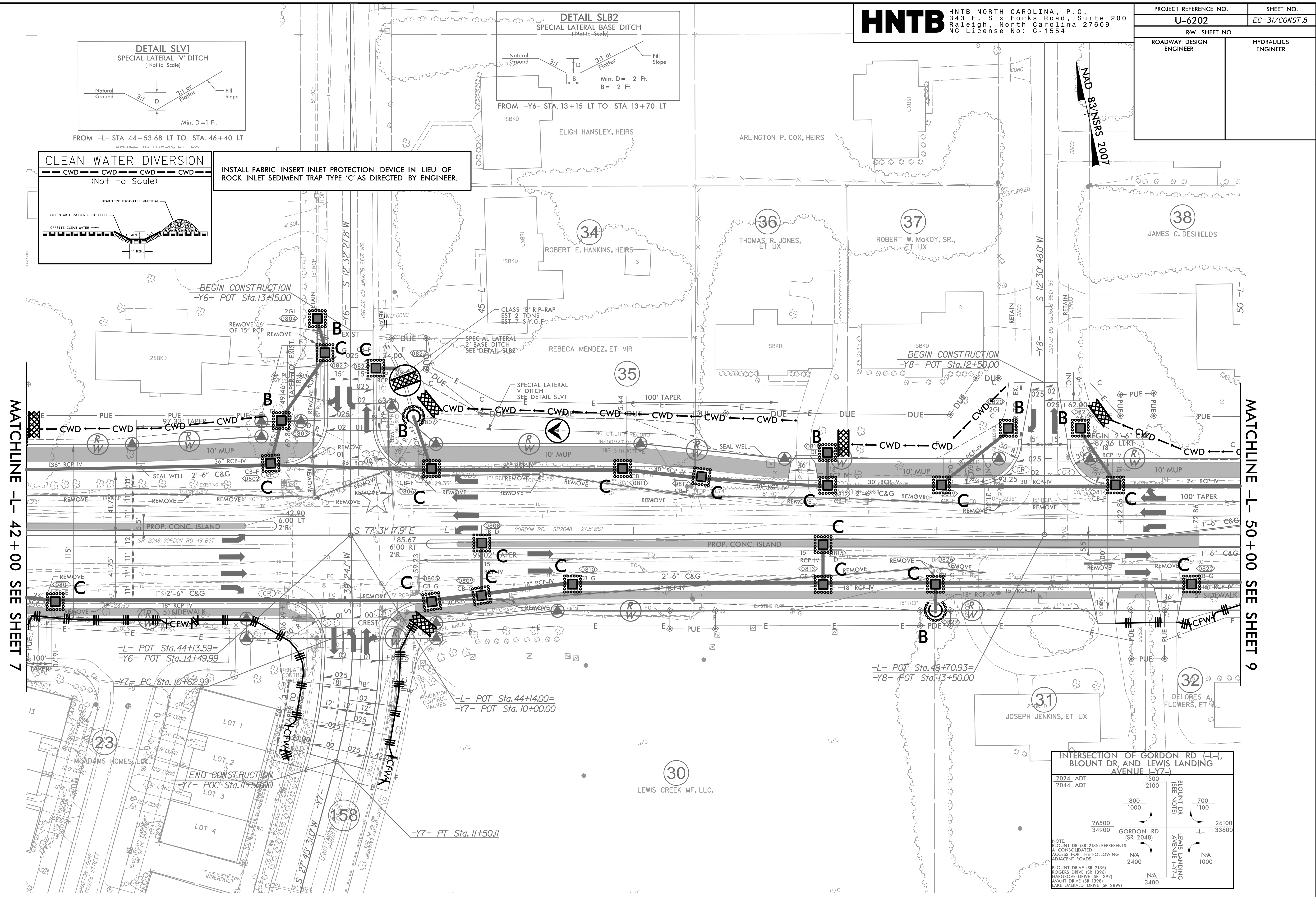


PROJECT REFERENCE NO.	SHEET NO.
U-6202	EC-31/CONST.8
RW SHEET NO.	
ROADWAY DESIGN ENGINEER	HYDRAULICS ENGINEER



INSTALL FABRIC INSERT INLET PROTECTION DEVICE IN LIEU OF ROCK INLET SEDIMENT TRAP TYPE 'C' AS DIRECTED BY ENGINEER.



REVISIONS

NOTE:
 1. ALL DRIVEWAYS HAVE 10' RADII UNLESS OTHERWISE NOTED.

★ EXISTING SIGNAL

FOR -L- PROFILE, SEE SHEET 27
 FOR -Y6- PROFILE, SEE SHEET 33
 FOR -Y7- PROFILE, SEE SHEET 33
 FOR -Y8- PROFILE, SEE SHEET 34

8/17/99
 4/17/2024
 4/17/2024
 4/17/2024
 EC_PSH8.dgn
 HNTB