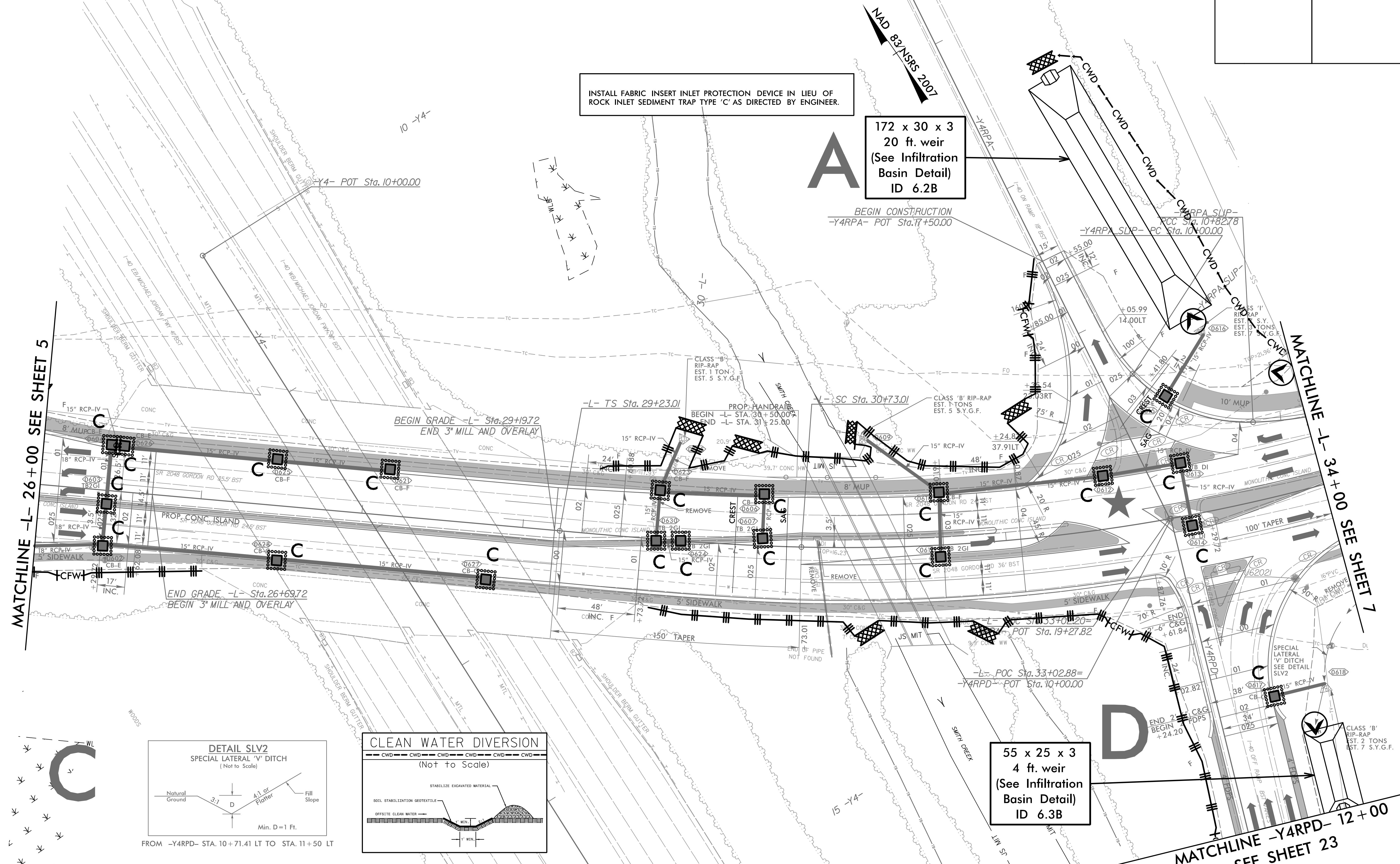


| | |
|-------------------------|---------------------|
| PROJECT REFERENCE NO. | SHEET NO. |
| U-6202 | EC-29/CONST.6 |
| RW SHEET NO. | |
| ROADWAY DESIGN ENGINEER | HYDRAULICS ENGINEER |



NOTE:
 1. ALL DRIVEWAYS HAVE 10' RADII UNLESS OTHERWISE NOTED.

★ PROPOSED SIGNAL

FOR -L- PROFILE, SEE SHEET 26
 FOR -Y4RPA- PROFILE, SEE SHEET 32
 FOR -Y4RPA SLIP- PROFILE, SEE SHEET 38
 FOR -Y4RPD- PROFILE, SEE SHEET 33
 FOR INTERSECTION DETAIL SEE SHEET 2B-1