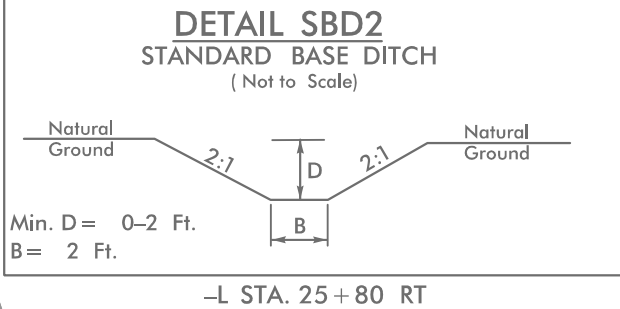
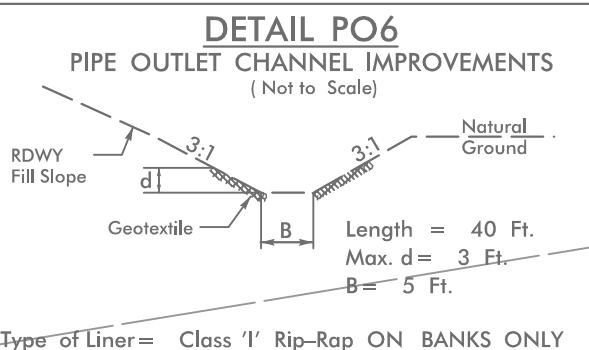
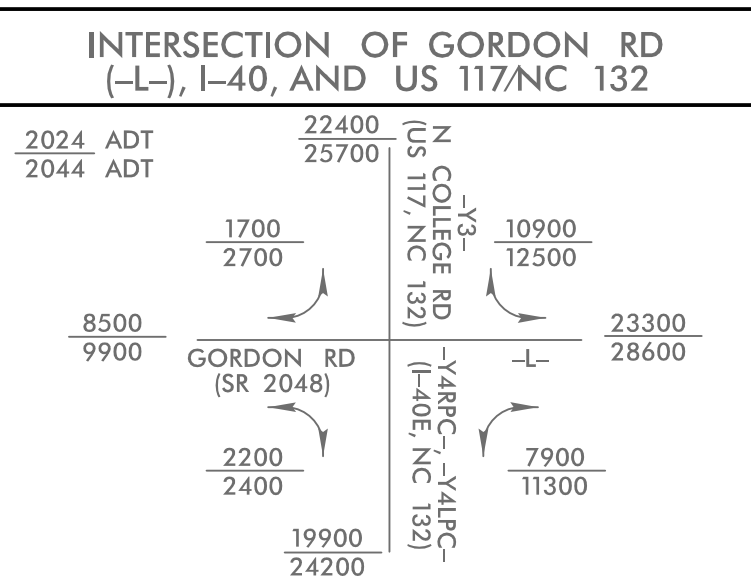
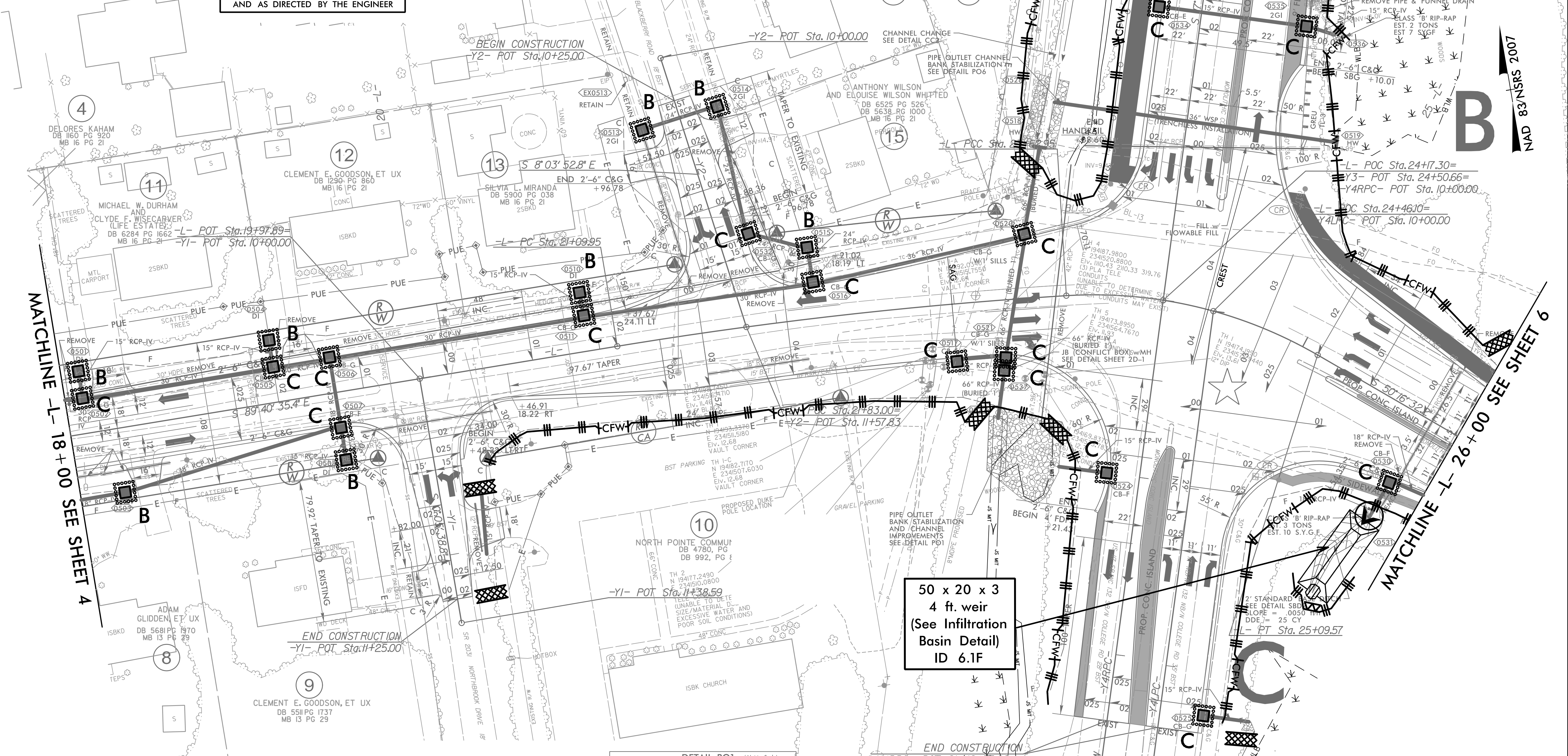


PROJECT REFERENCE NO.	SHEET NO.
U-6202	EC-27/CONST.5
RW SHEET NO.	
ROADWAY DESIGN ENGINEER	HYDRAULICS ENGINEER



INSTALL FABRIC INSERT INLET PROTECTION DEVICE IN LIEU OF ROCK INLET SEDIMENT TRAP TYPE 'C' AS DIRECTED BY ENGINEER.

UTILIZE COIR FIBER MATTING ADJACENT TO WETLANDS/JURISDICTIONAL AREAS, AND AS DIRECTED BY THE ENGINEER.

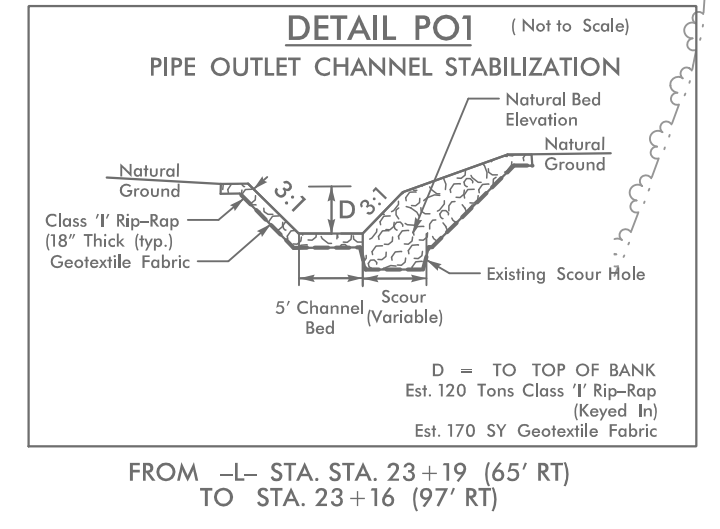
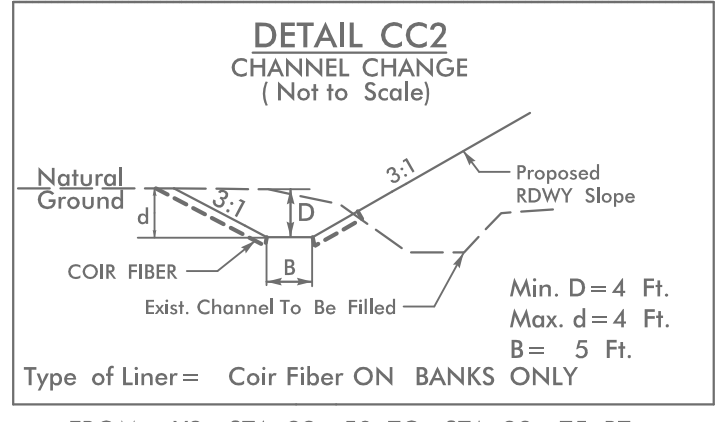


MATCHLINE -L- 18+00 SEE SHEET 4

MATCHLINE -Y3- 22+50 SEE SHEET 5A

MATCHLINE -L- 26+00 SEE SHEET 6

50 x 20 x 3
 4 ft. weir
 (See Infiltration Basin Detail)
 ID 6.1F



PI Sta 22+36.56 PI Sta 24+38.44
 $\Delta = 5' 47'' 54.2''$ (RT) $\Delta = 33' 36'' 09.0''$ (RT)
 $D = 2' 17'' 30.6''$ $D = 22' 55'' 05.9''$
 $L = 253.00'$ $L = 146.62'$

EXISTING SIGNAL

FOR -L- PROFILE, SEE SHEET 26
 FOR -Y1- PROFILE, SEE SHEET 31
 FOR -Y2- PROFILE, SEE SHEET 31
 FOR -Y3- PROFILE, SEE SHEET 32
 FOR -Y4RPC- PROFILE, SEE SHEET 32
 FOR -Y4LPC- PROFILE, SEE SHEET 32
 FOR INTERSECTION DETAIL SEE SHEET 2B-1

NOTE:
 1. ALL DRIVEWAYS HAVE 10' RADII UNLESS OTHERWISE NOTED.

8/17/99
 4/16/2024
 4/16/2024 EC_PSH.dgn
 HNTB