

8/17/99

4/17/2024
16202.EC.PSH20.dgn

REVISIONS

MATCHLINE -L- 135+00 SEE SHEET 19

MATCHLINE -L- 143+00 SEE SHEET 21

HNTB

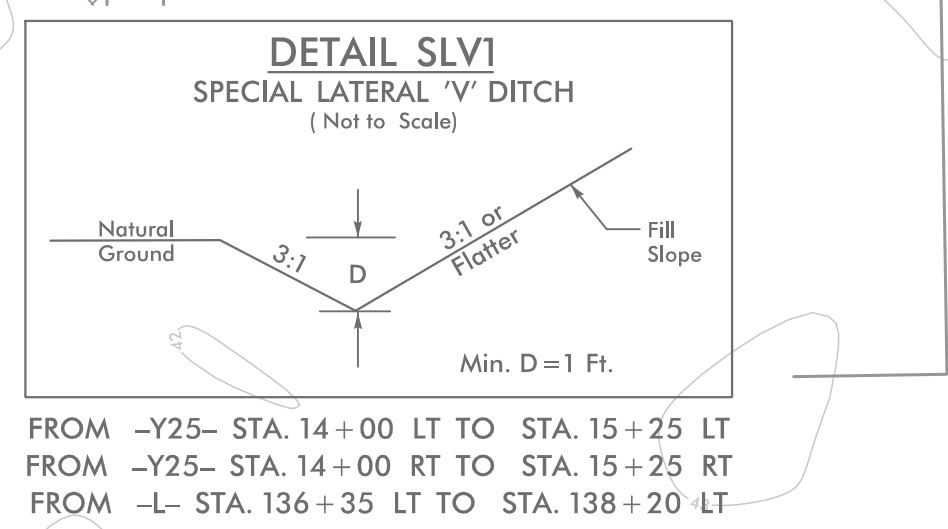
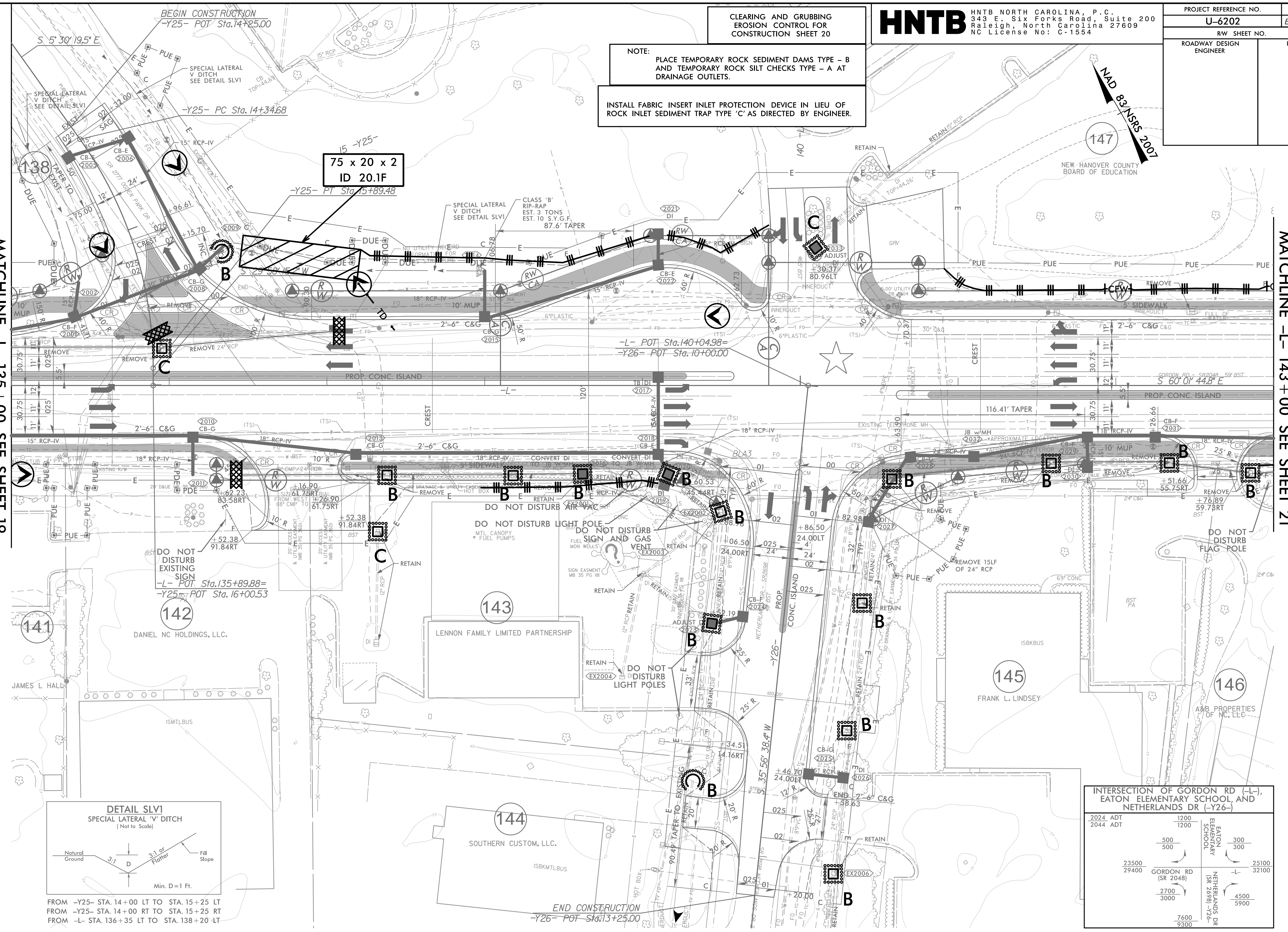
HNTB NORTH CAROLINA, P.C.
343 E. Six Forks Road, Suite 200
Raleigh, North Carolina 27609
NC License No: C-1554

PROJECT REFERENCE NO.	SHEET NO.
U-6202	EC-20/CONST.20
RW SHEET NO.	
ROADWAY DESIGN ENGINEER	HYDRAULICS ENGINEER

CLEARING AND GRUBBING
EROSION CONTROL FOR
CONSTRUCTION SHEET 20

NOTE:
PLACE TEMPORARY ROCK SEDIMENT DAMS TYPE - B
AND TEMPORARY ROCK SILT CHECKS TYPE - A AT
DRAINAGE OUTLETS.

INSTALL FABRIC INSERT INLET PROTECTION DEVICE IN LIEU OF
ROCK INLET SEDIMENT TRAP TYPE 'C' AS DIRECTED BY ENGINEER.



INTERSECTION OF GORDON RD (-L-),
EATON ELEMENTARY SCHOOL, AND
NETHERLANDS DR (-Y26-)

2024 ADT	1200	1200	
2044 ADT	500	500	300
	23500	29400	25100
	GORDON RD (SR 2048)		32100
	2700	3000	4500
			5900
	7600	9300	

NOTE:
1. ALL DRIVEWAYS HAVE 10' RADII UNLESS OTHERWISE NOTED.

★ EXISTING SIGNAL

FOR -L- PROFILE, SEE SHEET 30
FOR -Y25- PROFILE, SEE SHEET 38
FOR -Y26- PROFILE, SEE SHEET 38
FOR INTERSECTION DETAIL, SEE SHEET 2B-3