

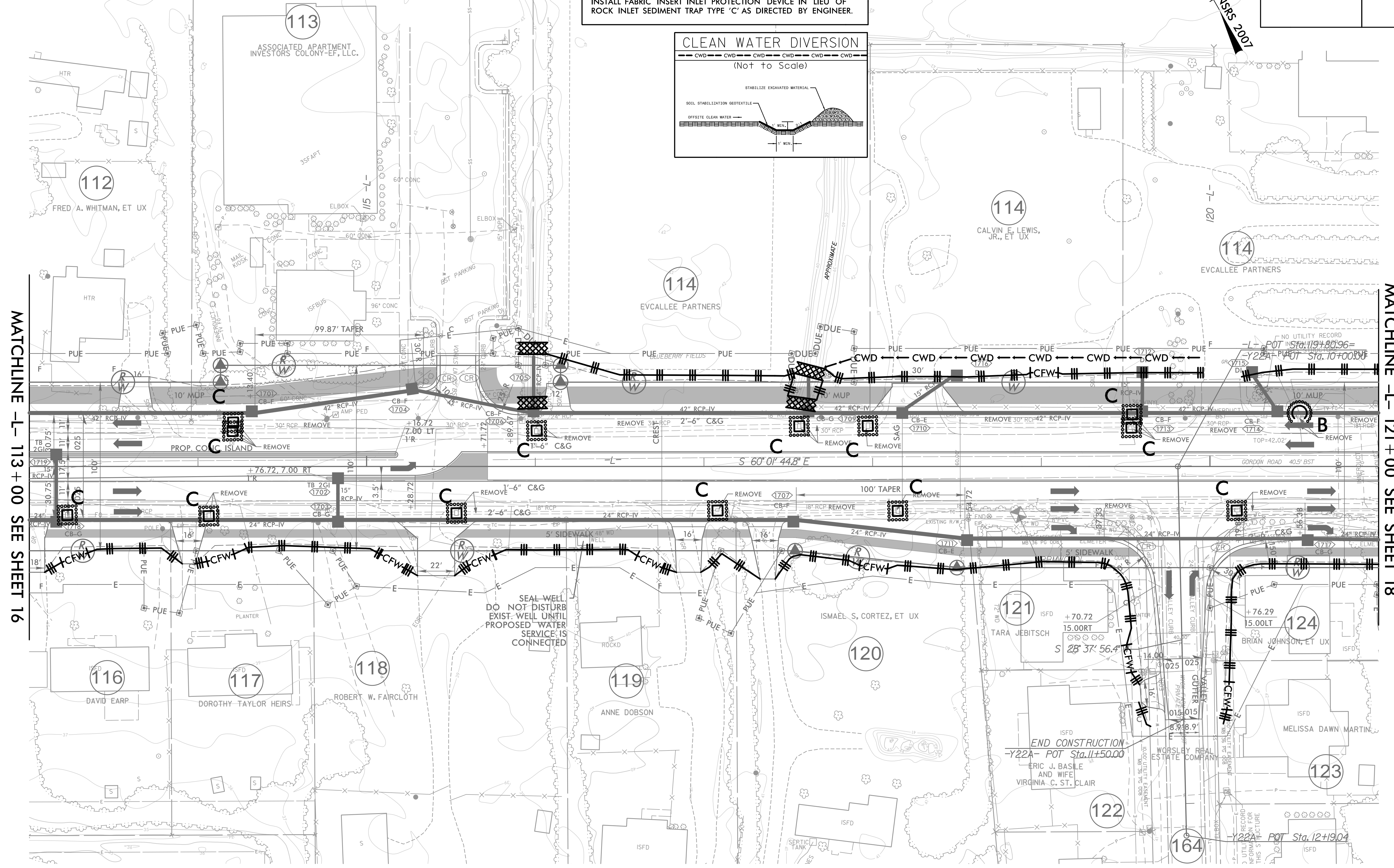
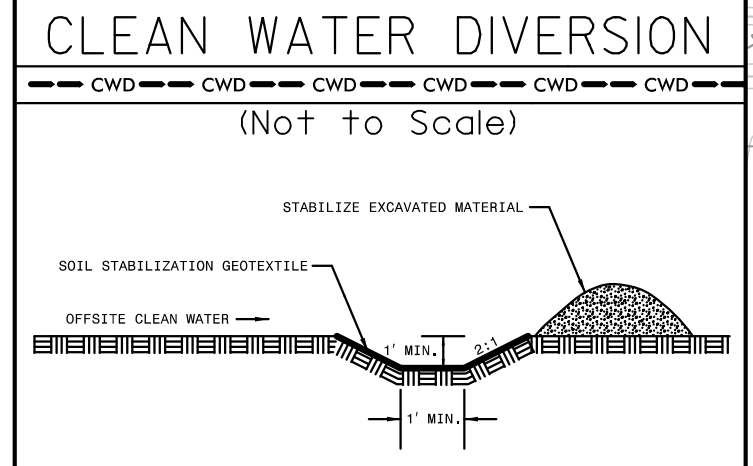
8/17/99

PROJECT REFERENCE NO. <b>U-6202</b>	SHEET NO. <b>EC-17/CONST.17</b>
RW SHEET NO.	
ROADWAY DESIGN ENGINEER	HYDRAULICS ENGINEER

CLEARING AND GRUBBING  
 EROSION CONTROL FOR  
 CONSTRUCTION SHEET 17

NOTE:  
 PLACE TEMPORARY ROCK SEDIMENT DAMS TYPE - B  
 AND TEMPORARY ROCK SILT CHECKS TYPE - A AT  
 DRAINAGE OUTLETS.

INSTALL FABRIC INSERT INLET PROTECTION DEVICE IN LIEU OF  
 ROCK INLET SEDIMENT TRAP TYPE 'C' AS DIRECTED BY ENGINEER.



MATCHLINE -L- 113 + 00 SEE SHEET 16

MATCHLINE -L- 121 + 00 SEE SHEET 18

REVISIONS

NOTE:  
 1. ALL DRIVEWAYS HAVE 10' RADII UNLESS OTHERWISE NOTED.

FOR -L- PROFILE, SEE SHEET 29  
 FOR -Y22A- PROFILE, SEE SHEET 37

4/17/2024  
 4/17/2024 EC.PSH17.dgn  
 HNTB