

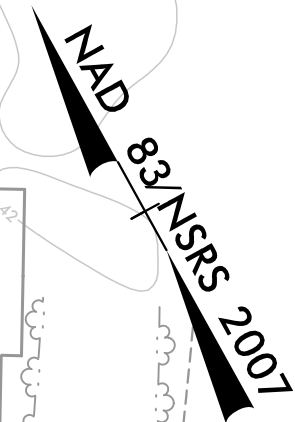
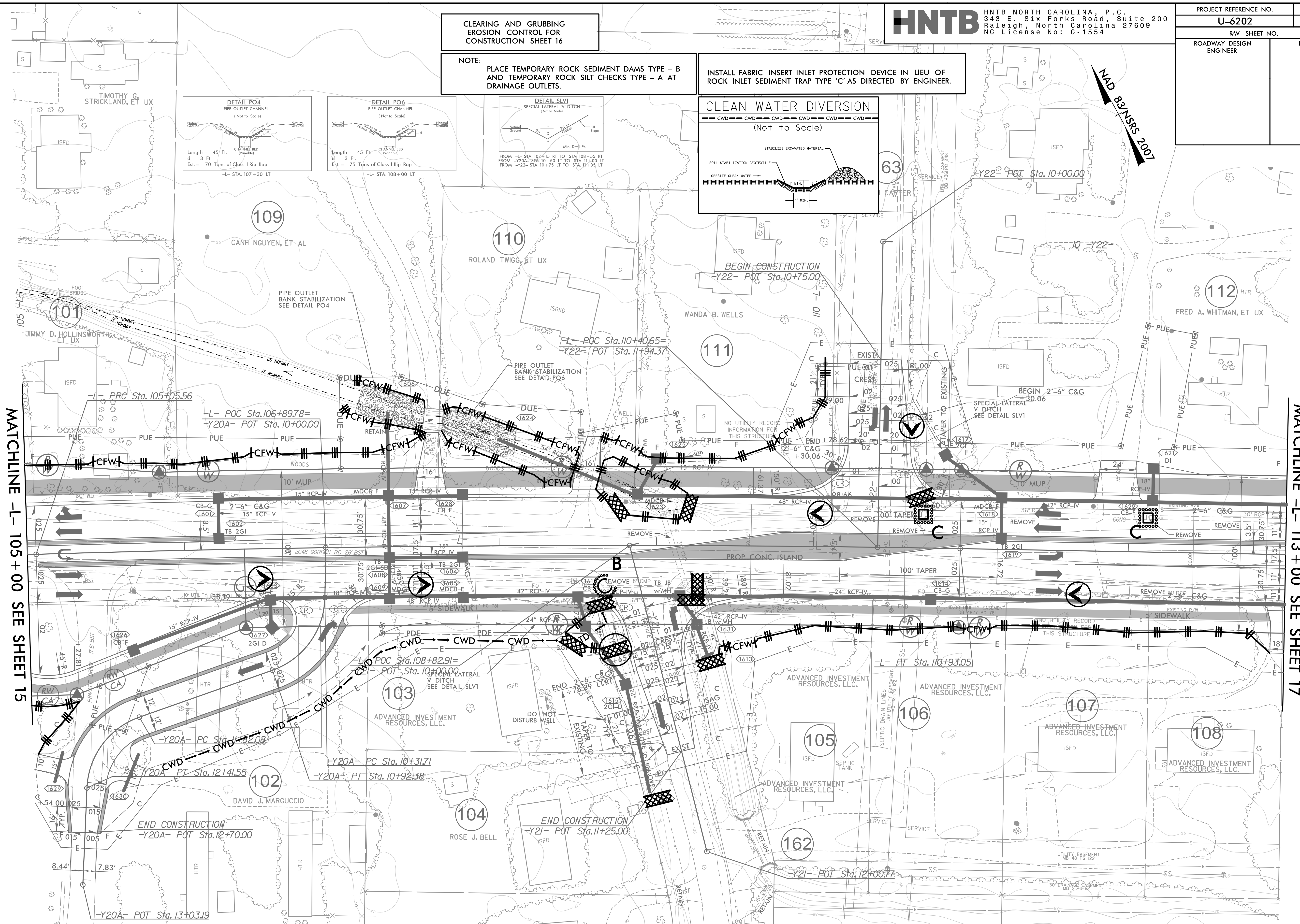
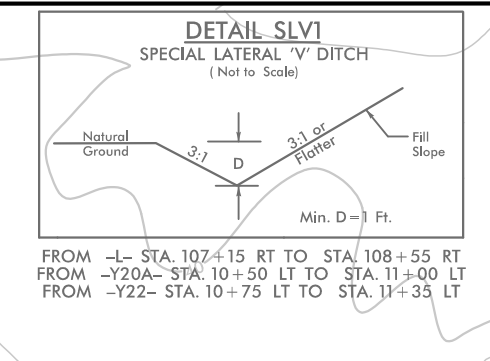
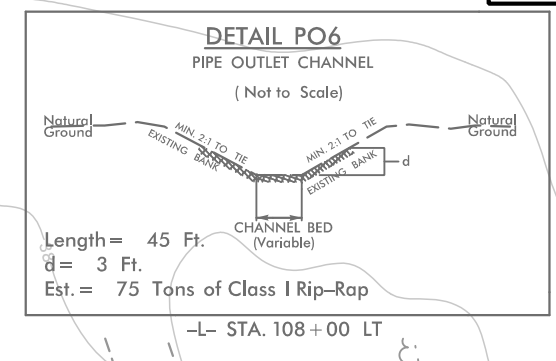
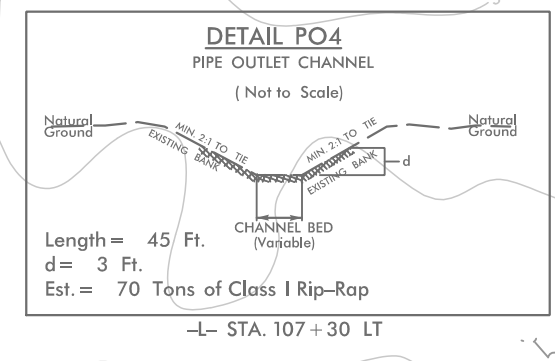
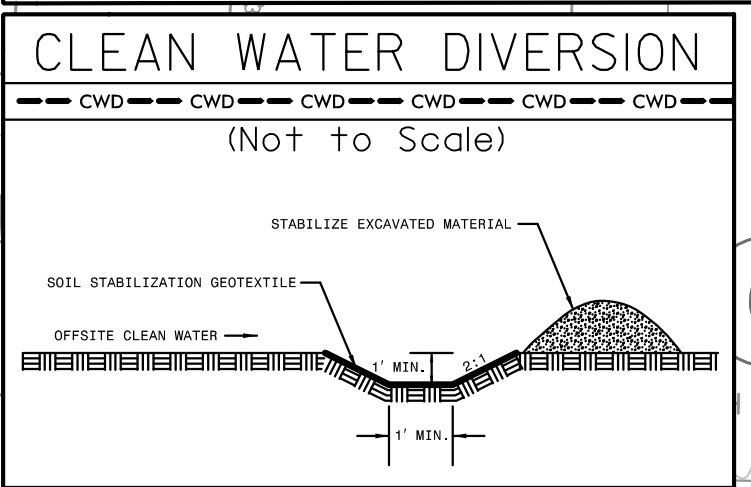
8/17/99

PROJECT REFERENCE NO.	SHEET NO.
U-6202	EC-16/CONST.16
RW SHEET NO.	
ROADWAY DESIGN ENGINEER	HYDRAULICS ENGINEER

**CLEARING AND GRUBBING
 EROSION CONTROL FOR
 CONSTRUCTION SHEET 16**

NOTE:
 PLACE TEMPORARY ROCK SEDIMENT DAMS TYPE - B
 AND TEMPORARY ROCK SILT CHECKS TYPE - A AT
 DRAINAGE OUTLETS.

INSTALL FABRIC INSERT INLET PROTECTION DEVICE IN LIEU OF
 ROCK INLET SEDIMENT TRAP TYPE 'C' AS DIRECTED BY ENGINEER.



REVISIONS

NOTE:
 1. ALL DRIVEWAYS HAVE 10' RADII UNLESS OTHERWISE NOTED.

FOR -L- PROFILE, SEE SHEET 29
 FOR -Y20A- PROFILE, SEE SHEET 37
 FOR -Y21- PROFILE, SEE SHEET 37
 FOR -Y22- PROFILE, SEE SHEET 37
 FOR INTERSECTION DETAIL, SEE SHEET 2B-2

4/17/2024
 4/17/2024 EC.PSH16.dgn
 HNTB