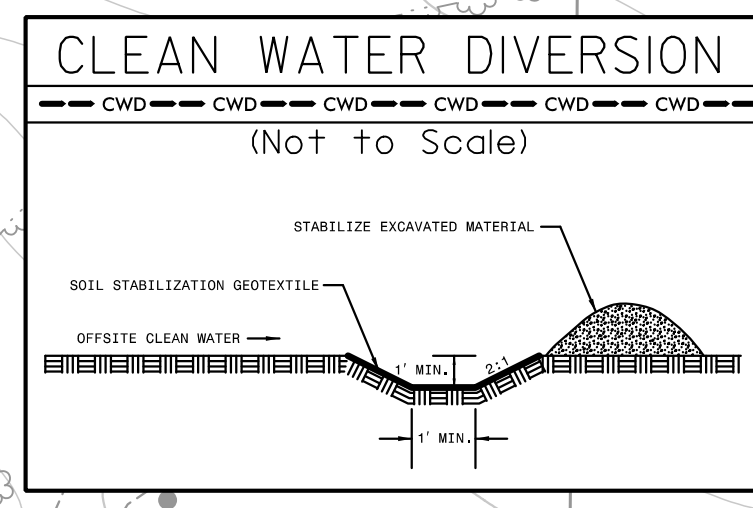


PROJECT REFERENCE NO. U-6202	SHEET NO. EC-15/CONST.15
RW SHEET NO.	
ROADWAY DESIGN ENGINEER	HYDRAULICS ENGINEER

CLEARING AND GRUBBING EROSION CONTROL FOR CONSTRUCTION SHEET 15

NOTE:
PLACE TEMPORARY ROCK SEDIMENT DAMS TYPE - B AND TEMPORARY ROCK SILT CHECKS TYPE - A AT DRAINAGE OUTLETS.

INSTALL FABRIC INSERT INLET PROTECTION DEVICE IN LIEU OF ROCK INLET SEDIMENT TRAP TYPE 'C' AS DIRECTED BY ENGINEER.

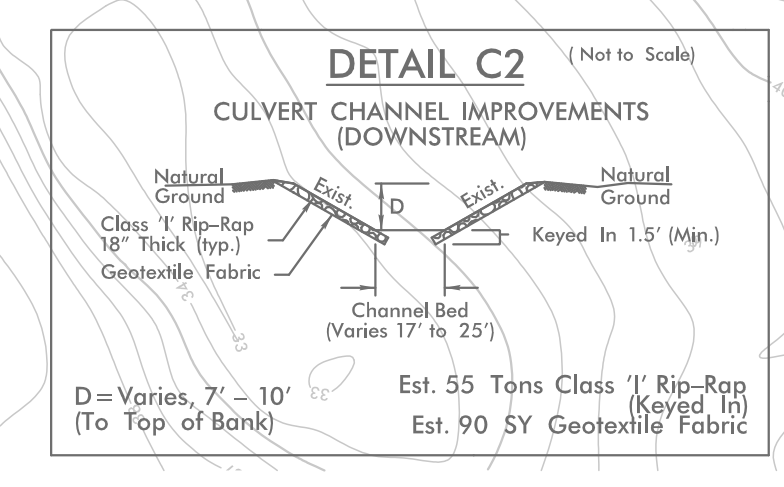
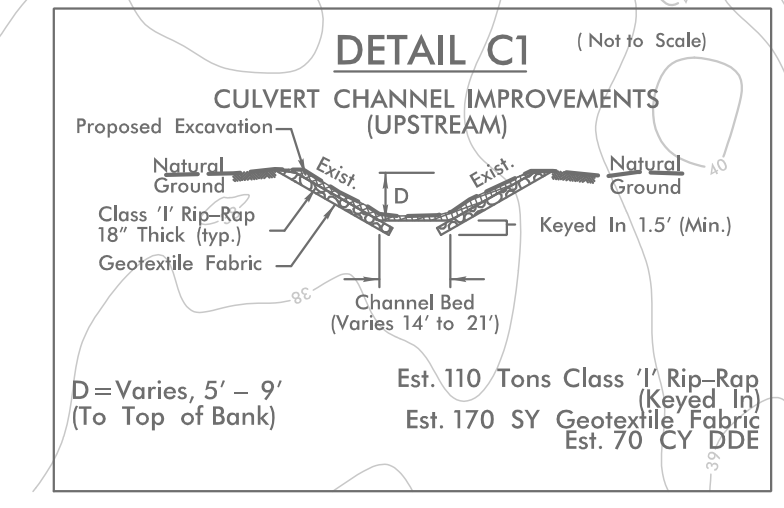


55 x 25 x 3
4 ft. weir
(See Infiltration Basin Detail)
ID 15.2B

NOTE:
TEMPORARY 15" PIPES FOR CLEAN WATER DIVERSION.

80 x 39 x 3
12 ft. weir
(See Infiltration Basin Detail)
ID 15.1B

-L-
PI Sta 102+47.82
Δ = 2' 27" 41.9" (LT)
D = 0' 28" 38.9"
L = 515.57'
T = 257.82'
R = 12,000.00'
e = NC



NOTE:
1. ALL DRIVEWAYS HAVE 10' RADII UNLESS OTHERWISE NOTED.

REVISIONS

MATCHLINE -L- 97 + 00 SEE SHEET 14

MATCHLINE -L- 105 + 00 SEE SHEET 16

8.17/99
5.24.2024
5.24.2024
16202.EC.PSH15.dgn
HNTB