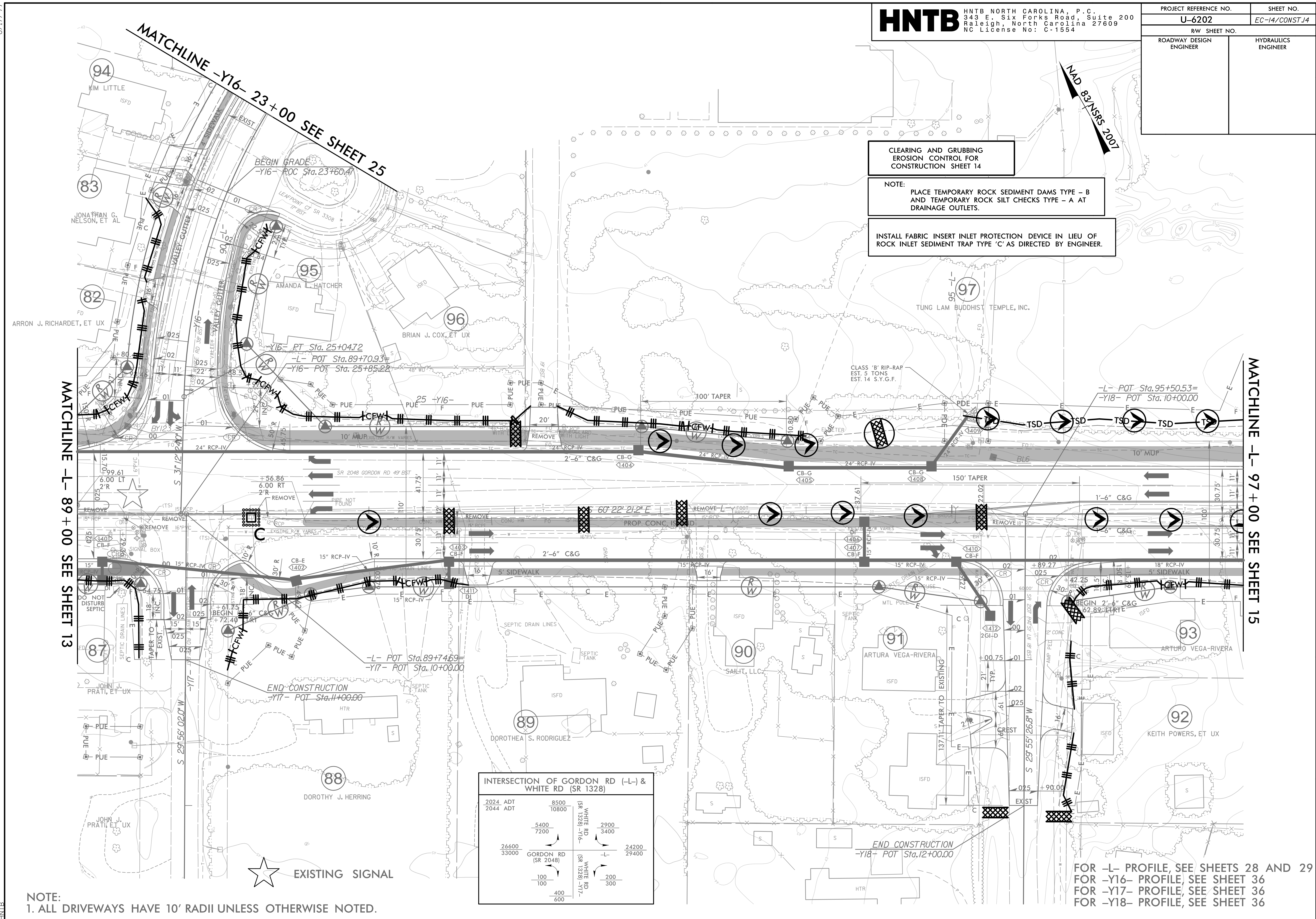


PROJECT REFERENCE NO.	SHEET NO.
U-6202	EC-14/CONST.14
RW SHEET NO.	
ROADWAY DESIGN ENGINEER	HYDRAULICS ENGINEER

CLEARING AND GRUBBING
 EROSION CONTROL FOR
 CONSTRUCTION SHEET 14

NOTE:
 PLACE TEMPORARY ROCK SEDIMENT DAMS TYPE - B
 AND TEMPORARY ROCK SILT CHECKS TYPE - A AT
 DRAINAGE OUTLETS.

INSTALL FABRIC INSERT INLET PROTECTION DEVICE IN LIEU OF
 ROCK INLET SEDIMENT TRAP TYPE 'C' AS DIRECTED BY ENGINEER.



INTERSECTION OF GORDON RD (-L-) & WHITE RD (SR 1328)

2024 ADT	8500	2900	
2044 ADT	10800	3400	
	5400		
	7200		
26600			24200
33000			29400
	100		200
	100		300
	400		600

NOTE:
 1. ALL DRIVEWAYS HAVE 10' RADII UNLESS OTHERWISE NOTED.

FOR -L- PROFILE, SEE SHEETS 28 AND 29
 FOR -Y16- PROFILE, SEE SHEET 36
 FOR -Y17- PROFILE, SEE SHEET 36
 FOR -Y18- PROFILE, SEE SHEET 36

REVISIONS

8/17/99
 4/17/2024
 4/17/2024
 EC-PSH14.dgn
 HNTB